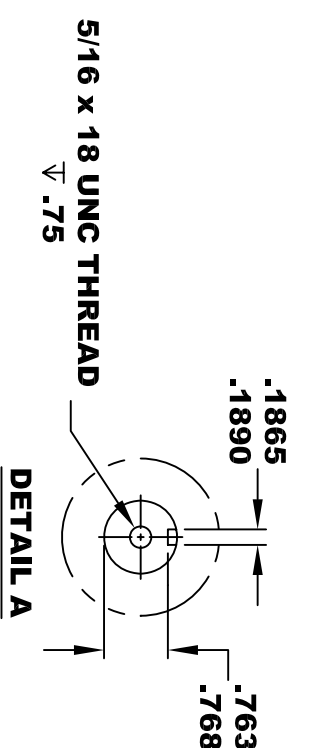
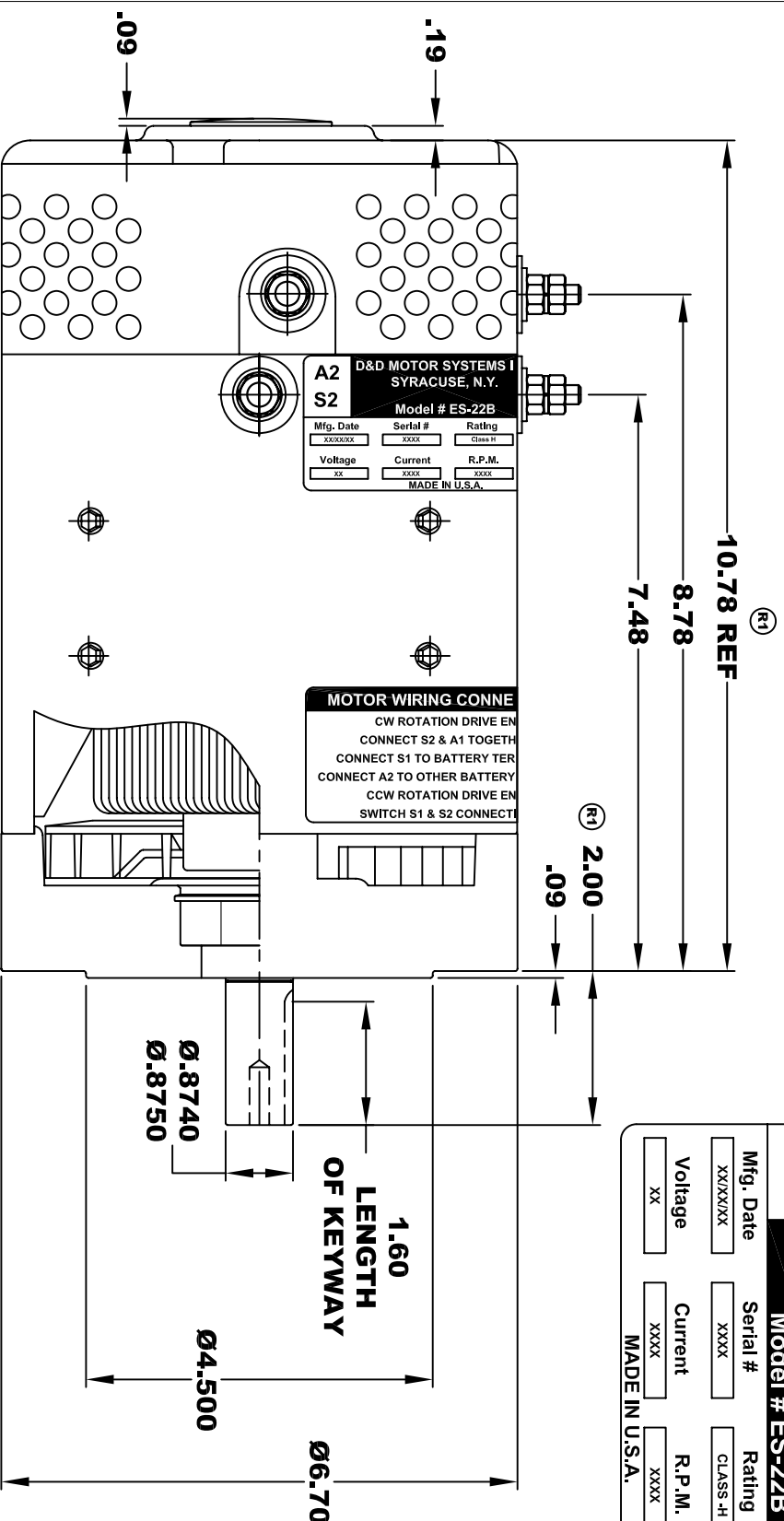
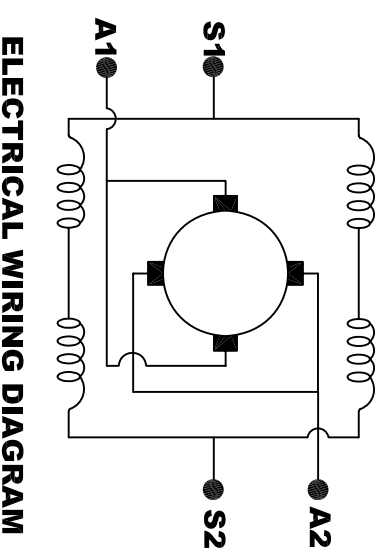
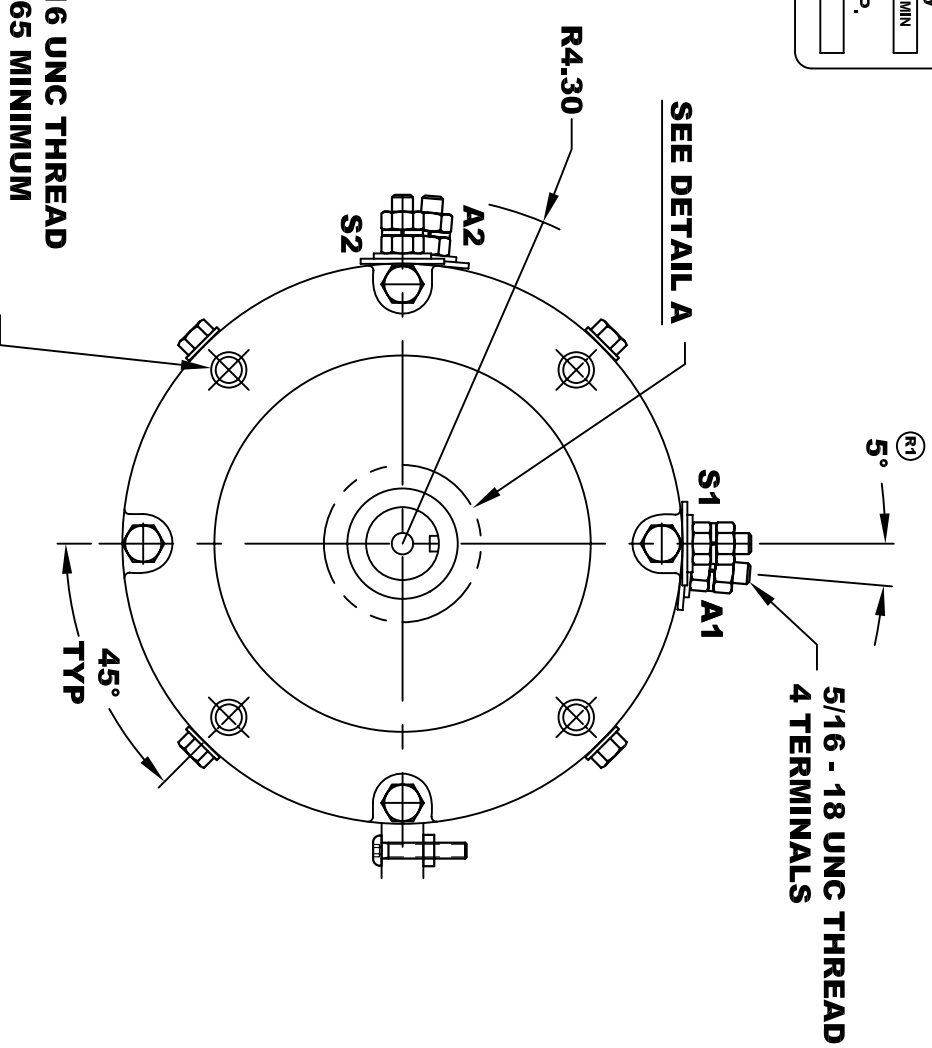


**TORQUE SPECIFICATION FOR  
POWER CABLE SECURING TOP NUTS  
5/16-18 UNC - 110 IN / LBS MAX**

<b>D&amp;D MOTOR SYSTEMS INC.</b>				<b>A1</b>
<b>SYRACUSE N.Y.</b>				<b>S1</b>
<b>Model # ES-22B</b>				
<b>A2</b>	<b>S2</b>	<b>A1</b>	<b>S1</b>	
Mfg. Date	Serial #	Rating	Duty	
XX/XX/XX	XXXX	CLASS -H	S2,XX MIN	
Voltage	Current	R.P.M.	H.P.	
XX	XXXX	XXXX	XX	
MADE IN U.S.A.				



**3/8 - 16 UNC THREAD  
▽ .65 MINIMUM  
.03-.05 x 45° CHAMFER  
4 PLACES, ON A Ø5.875 B. C.**



**MOTOR WIRING CONNECTIONS:**  
**CW ROTATION DRIVE END**  
**CONNECT S2 & A1 TOGETHER**  
**CONNECT S1 TO BATTERY TERMINAL**  
**CCW ROTATION DRIVE END**  
**CONNECT A2 TO OTHER BATTERY TERMINAL**  
**SWITCH S1 & S2 CONNECTIONS**

**MOTOR WEIGHT: 50 LBS  
CLASS "H" INSULATION  
PERFORMANCE SPEC: 2**

THIS PRINT IS THE PROPERTY OF D&D MOTOR SYSTEMS INC.  
 DO NOT SCALE  
 WORK TO DIMENSIONS  
 TOLERANCES UNLESS OTHERWISE SPECIFIED ARE AS FOLLOWS  
 .XX .01  
 .XXX .005  
 .XX ROUGH CASTING .03  
 HOLES -.001 / +.006  
 ANGLES 0°30"

**D & D MOTOR SYSTEMS INC**  
**MOTOR OUTLINE**

SIZE	DRAWN DATE	RELEASE DATE	DWG NO. / PART NO.	REV
B	7-14-03		ES-22B	R1
SCALE	STF	DRAWN BY	MJG	REV DATE
				11-20-03