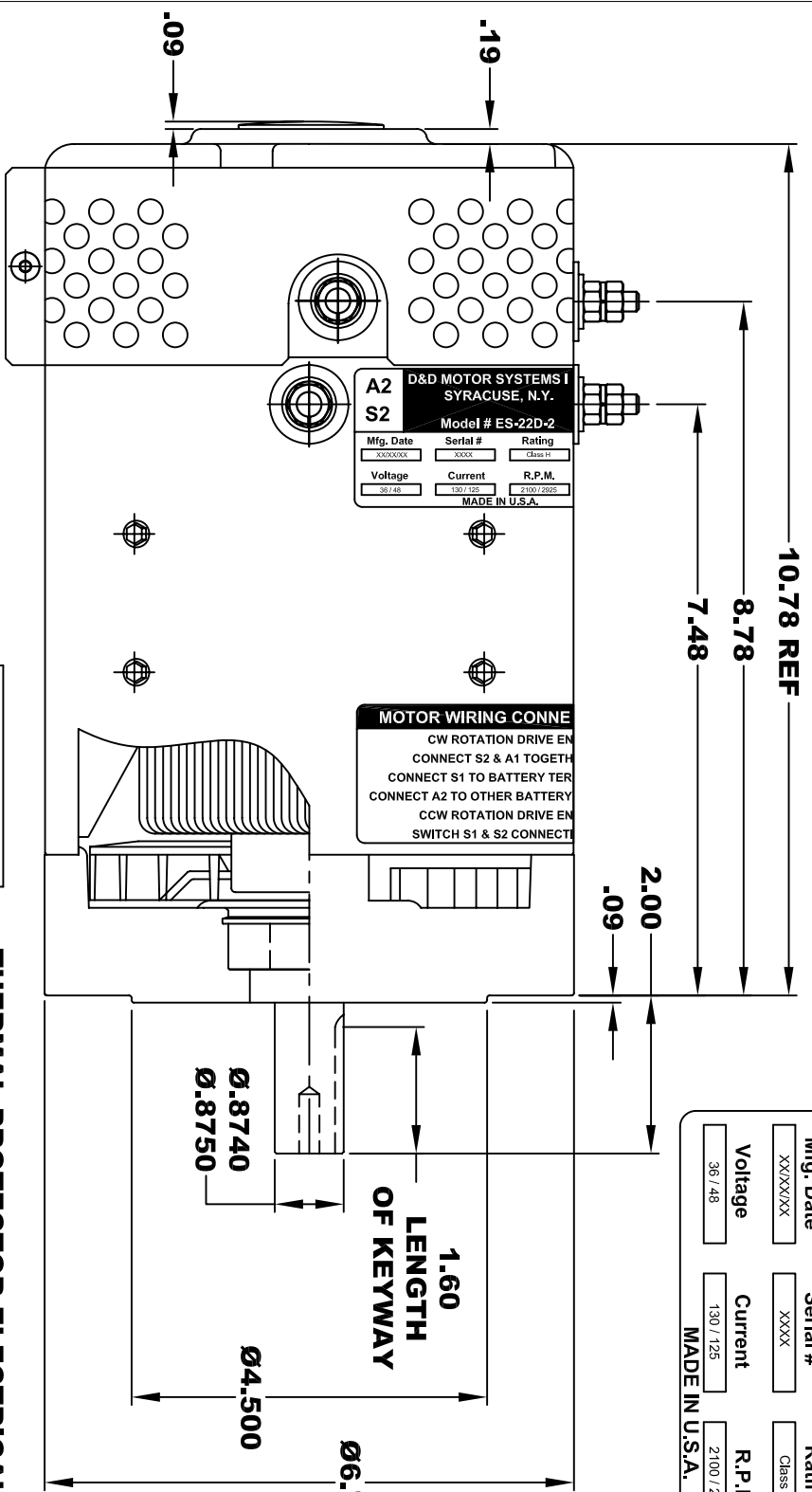
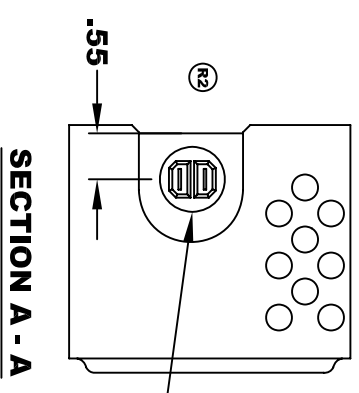
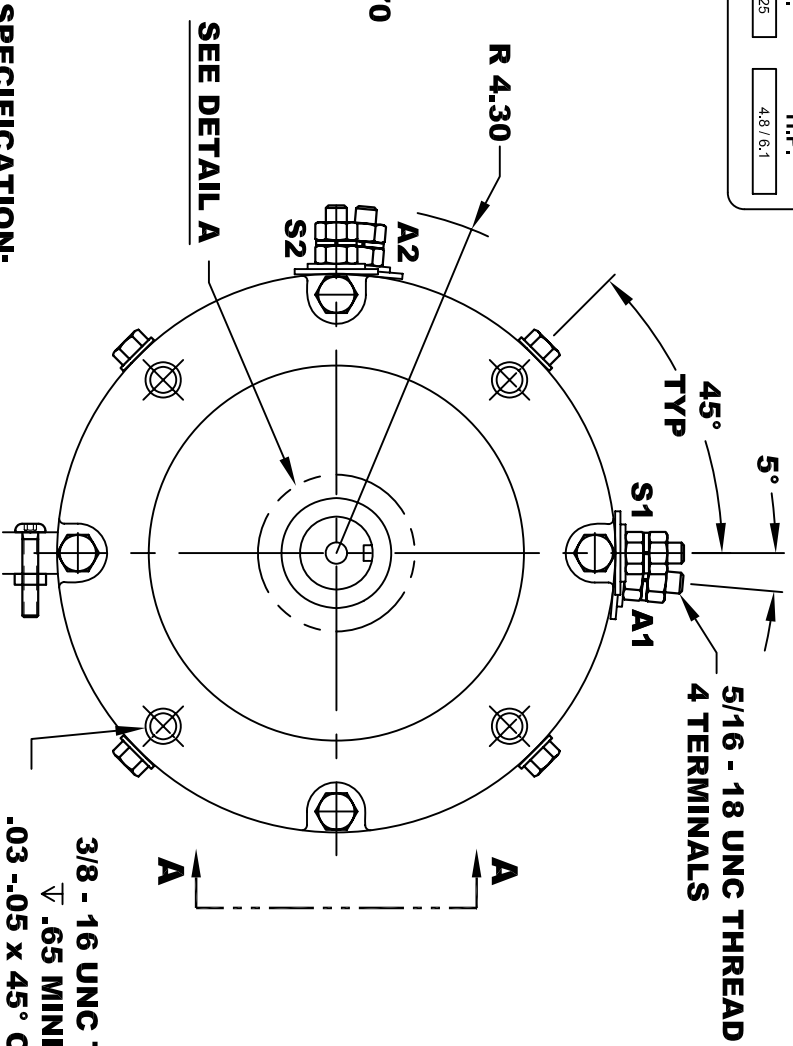


R2 REVISED VIEW



A2	D&D MOTOR SYSTEMS INC.	A1
S2	SYRACUSE, N.Y.	S1
Model # ES-22D-2		
Mfg. Date	Serial #	Rating
XXXXXX	XXXX	Class H
Duty	S2 - 60 MIN	
Voltage	Current	R.P.M.
36 / 48	130 / 125	2100 / 2925
MADE IN U.S.A.		H.P.
		4.8 / 6.4

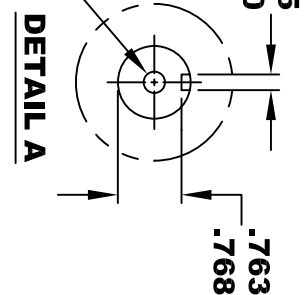
TORQUE SPECIFICATION FOR POWER CABLE SECURING TOP NUTS
5/16-18 UNC - 110 IN / LBS MAX



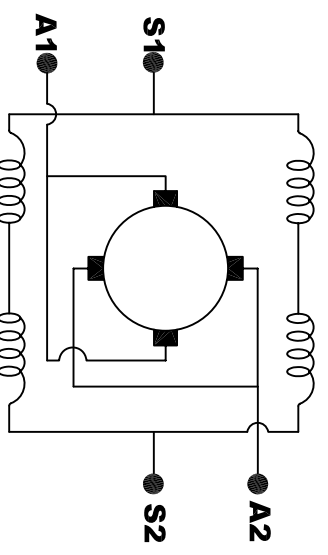
TERMINAL BUSHING
1/4" SPADE CONNECTIONS

THERMAL PROTECTOR ELECTRICAL SPECIFICATION:
MAX. DC OPERATING VOLTAGE: 60 VOLTS
180° C NORMALLY OPEN SWITCH

5/16 x 18 UNC THREAD
▽ .75



MOTOR WEIGHT: 50 LBS
CLASS "H" INSULATION
PERFORMANCE SPEC: 2



ELECTRICAL WIRING DIAGRAM

MOTOR WIRING CONNECTIONS:
CW ROTATION DRIVE END
CONNECT S2 & A1 TOGETHER
CONNECT S1 TO BATTERY TERMINAL
CCW ROTATION DRIVE END
CONNECT A2 TO OTHER BATTERY TERMINAL
SWITCH S1 & S2 CONNECTIONS

THIS PRINT IS THE PROPERTY OF D&D MOTOR SYSTEMS INC.
 DO NOT SCALE
 WORK TO DIMENSIONS
 TOLERANCES UNLESS OTHERWISE SPECIFIED ARE AS FOLLOWS

.XX	.01
.XXX	.005
.XX ROUGH CASTING	.03
HOLES	-.001 / +.006
ANGLES	0°30"

D & D MOTOR SYSTEMS INC
MOTOR OUTLINE

SIZE	DRAWN DATE	RELEASE DATE	DWG NO. / PART NO.	REV
B	11-19-04		ES-22D-2	R2
SCALE	STF	DRAWN BY	MJG	REV DATE
				12-28-04