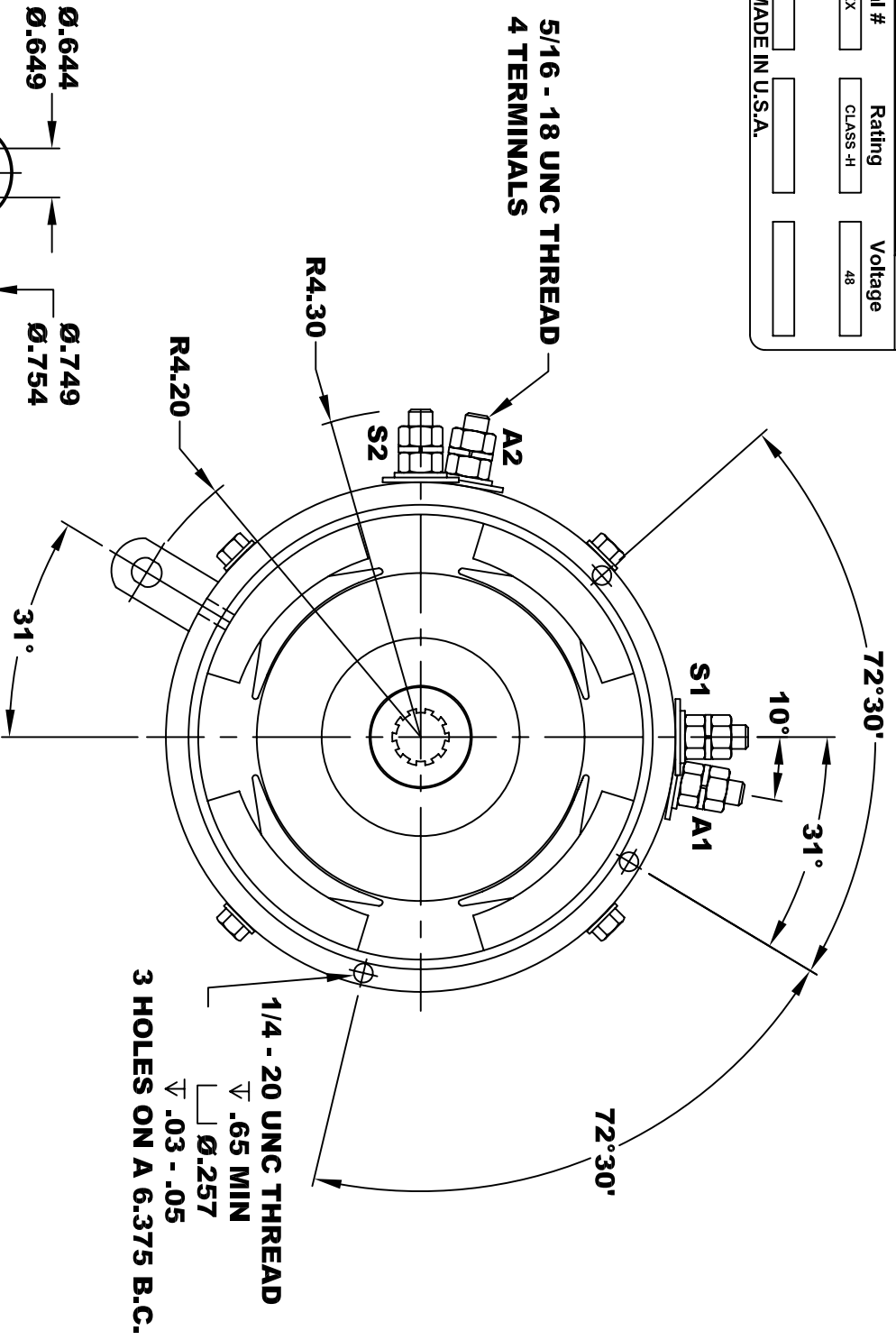
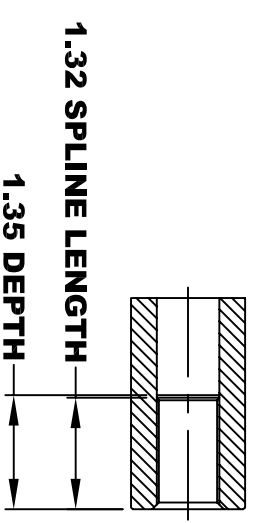
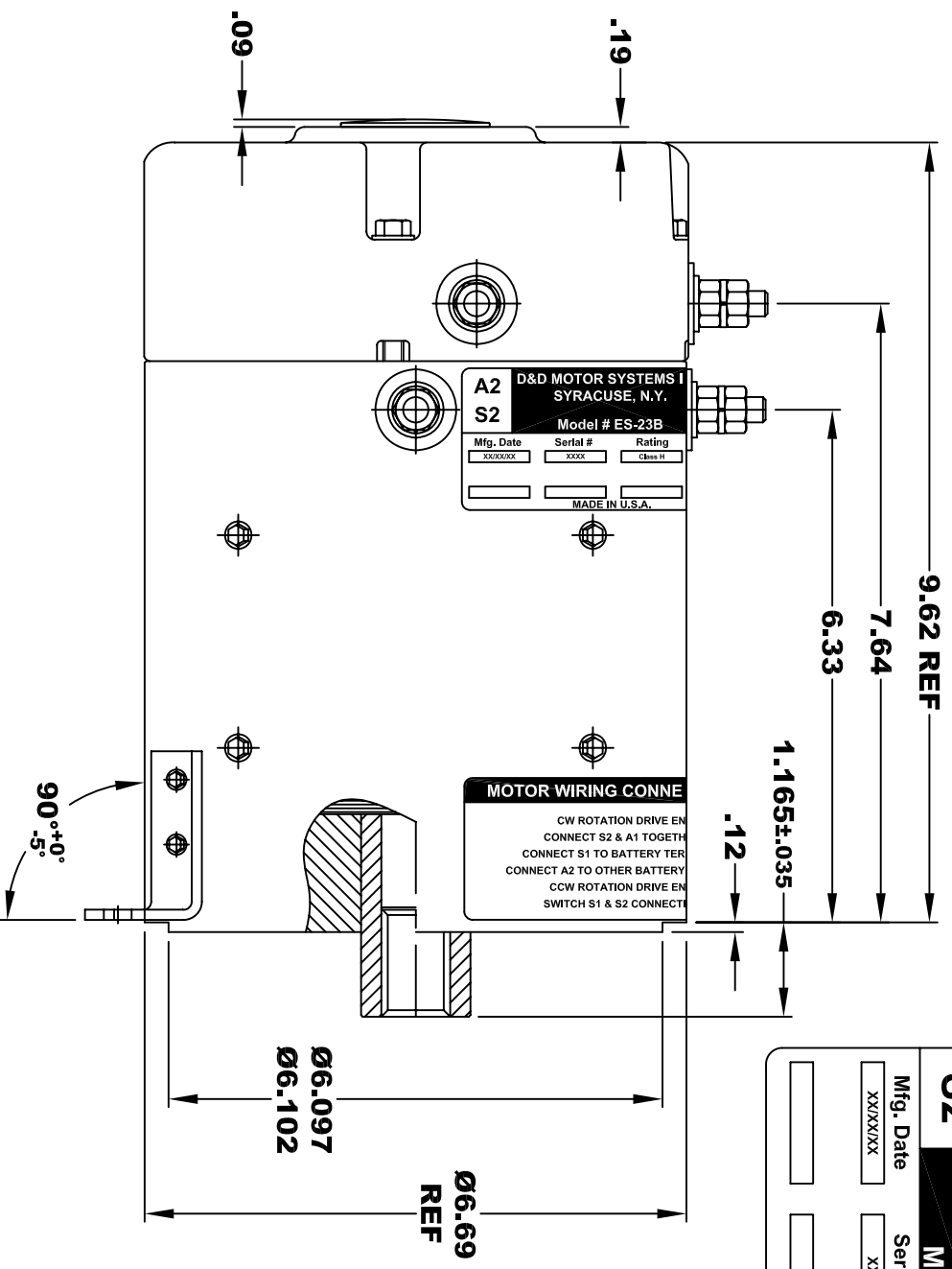
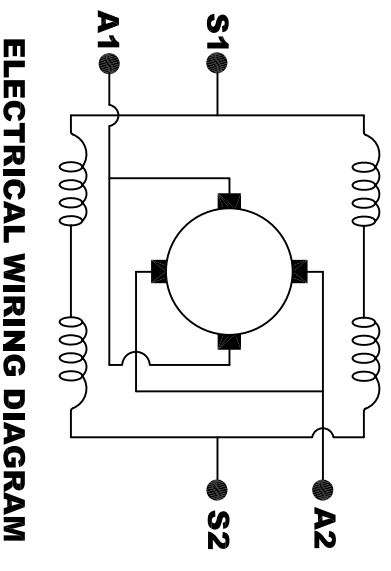


<b>D&amp;D MOTOR SYSTEMS INC.</b>			
<b>A2</b>	<b>SYRACUSE N.Y.</b>		<b>A1</b>
<b>S2</b>	<b>Model # ES-23B</b>		<b>S1</b>
Mfg. Date	Serial #	Rating	Voltage
XX/XX/XX	XXXX	CLASS -H	48
MADE IN U.S.A.			



**TORQUE SPECIFICATION FOR  
 POWER CABLE SECURING TOP NUTS  
 5/16-18 UNC - 110 IN / LBS MAX**

**MOTOR WEIGHT 54 LBS  
 CLASS "H" INSULATION  
 PERFORMANCE SPEC: 11**



**MOTOR WIRING CONNECTIONS:  
 CW ROTATION DRIVE END  
 CONNECT S2 & A1 TOGETHER  
 CONNECT S1 TO BATTERY TERMINAL  
 CCW ROTATION DRIVE END  
 SWITCH S1 & S2 CONNECTIONS**

THIS PRINT IS THE PROPERTY OF D&D MOTOR SYSTEMS INC.  
 DO NOT SCALE  
 WORK TO DIMENSIONS  
 TOLERANCES UNLESS OTHERWISE SPECIFIED ARE AS FOLLOWS

.XX	.01
.XXX	.005
.XX XX ROUGH CASTING	.03
HOLES	-.001 / +.006
ANGLES	0°30"

<b>D &amp; D MOTOR SYSTEMS INC</b>			
<b>MOTOR OUTLINE</b>			
SIZE	DRAWN DATE	RELEASE DATE	DWG NO. / PART NO.
B	11-13-03		ES-23B
SCALE	DRAWN BY	REV DATE	REV
STF	MJG		