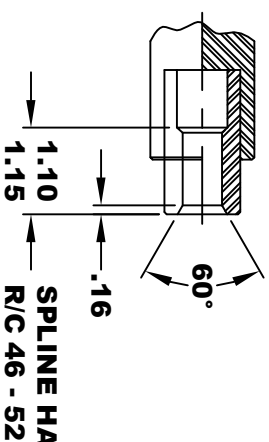
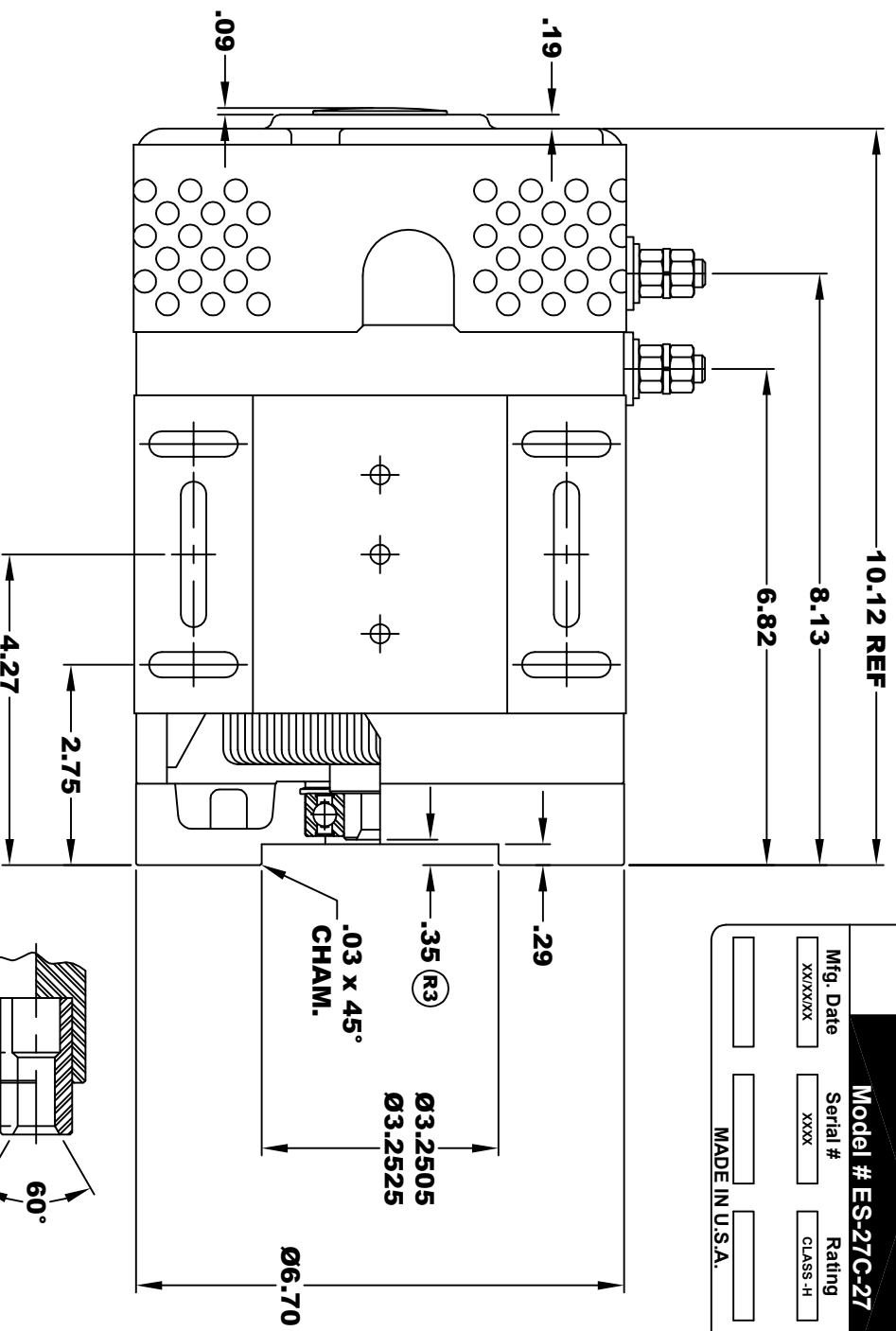


D&D MOTOR SYSTEMS INC.
SYRACUSE N.Y.

Model # ES-27C-27

Mfg. Date	Serial #	Rating	Voltage
XX/XX/XX	XXXX	CLASS-H	XX
MADE IN U.S.A.			



**INTERNAL INVOLUTE SPLINE SPECIFICATION
FLAT ROOT SIDE FIT (PER A.N.S.I. B92.1 CLASS 5)**

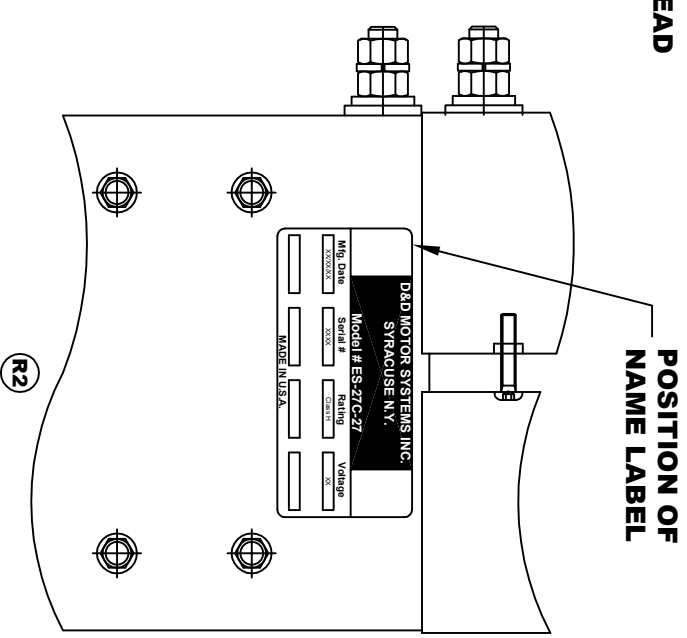
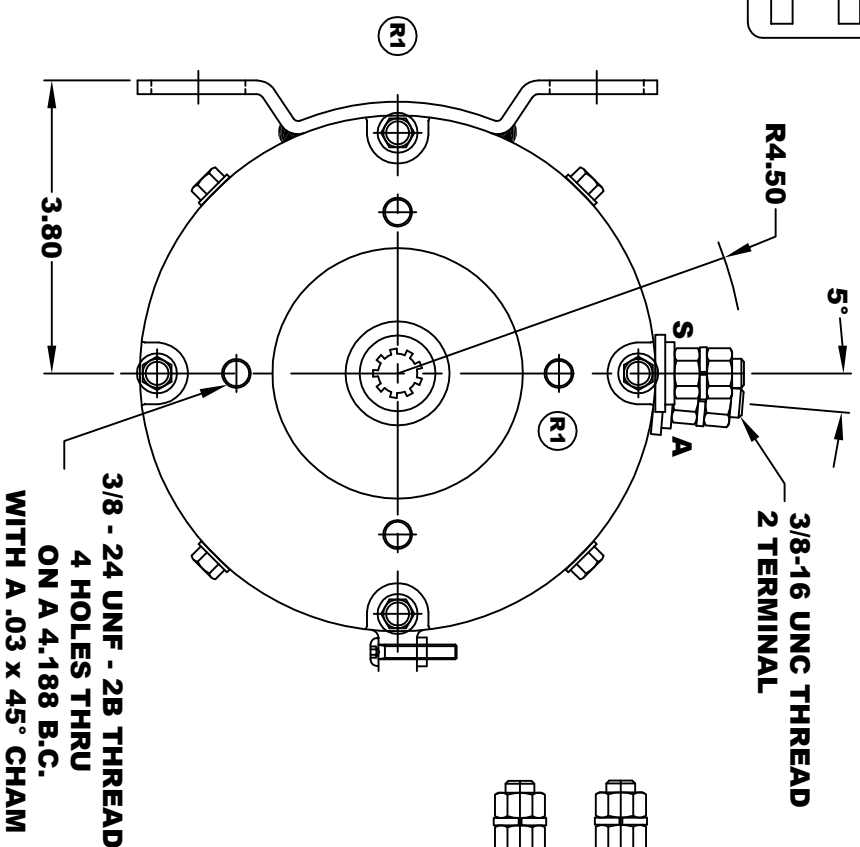
NO. OF TEETH	9
SPLINE PITCH	16 / 32
PRESSURE ANGLE	30°
BASE Ø	.4871 REF
PITCH Ø	.5625 REF
MAJOR Ø	.651
FORM Ø	.629
MINOR Ø	.509 - .514

Ø .010	A
Ø .010	B

CIRCULAR SPACE WIDTH

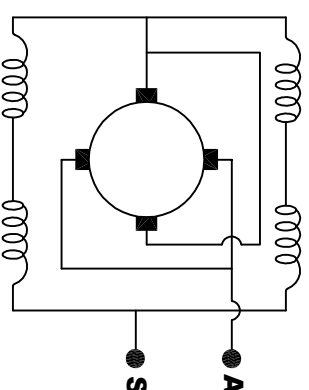
MAX ACTUAL	.1008
MIN EFFECTIVE	.0982
MAX DIMENSION BETWEEN TWO PINS	.3972
PIN Ø	.1080

**TORQUE SPECIFICATION FOR
POWER CABLE SECURING TOP NUTS
3/8-16 UNC - 140 IN / LBS MAX**



**MOTOR WEIGHT: 52 LBS
CLASS "H" INSULATION
PERFORMANCE SPEC: 27**

ELECTRICAL WIRING DIAGRAM



**MOTOR WIRING CONNECTIONS:
CGW ROTATION DRIVE END
CONNECT ONE POWER CABLE TO TERMINAL A
CONNECT THE OTHER POWER CABLE TO TERMINAL S**

THIS PRINT IS THE PROPERTY OF D&D MOTOR SYSTEMS INC.

DO NOT SCALE

WORK TO DIMENSIONS

TOLERANCES UNLESS OTHERWISE SPECIFIED ARE AS FOLLOWS

.XX	.01
.XXX	.005
.XX ROUGH CASTING	.03
HOLES	-.001 / +.006
ANGLES	0°30"

D & D MOTOR SYSTEMS INC

MOTOR OUTLINE

SIZE	DRAWN DATE	RELEASE DATE	DWG NO. / PART NO.	REV
B	3-28-05		ES-27C-27	R4
SCALE	STF	DRAWN BY	MJG	REV DATE
				10-3-17