

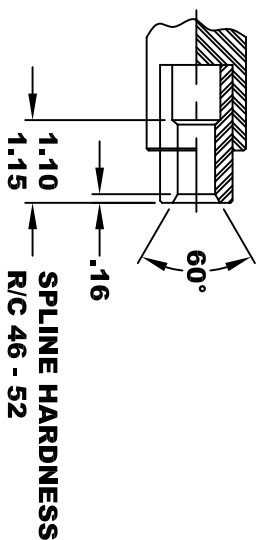
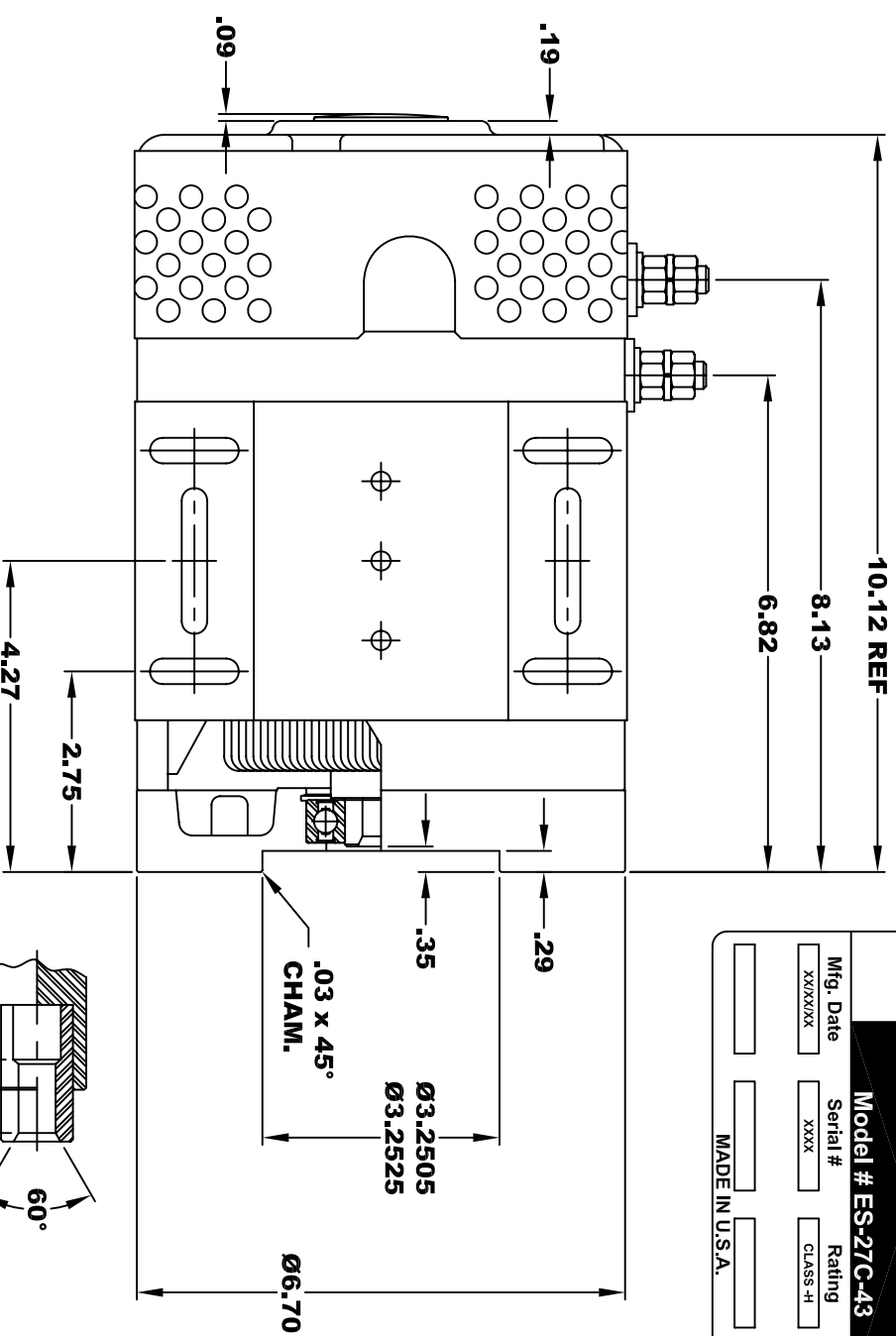
**D&D MOTOR SYSTEMS INC.**  
SYRACUSE N.Y.

Model # ES-27C-43

Mfg. Date \_\_\_\_\_ Serial # \_\_\_\_\_ Rating \_\_\_\_\_ Voltage \_\_\_\_\_  
XXXXXX \_\_\_\_\_ CLASS -I \_\_\_\_\_ XX \_\_\_\_\_

MADE IN U.S.A.

**TORQUE SPECIFICATION FOR  
POWER CABLE SECURING TOP NUTS**  
3/8-16 UNC - 140 IN / LBS MAX



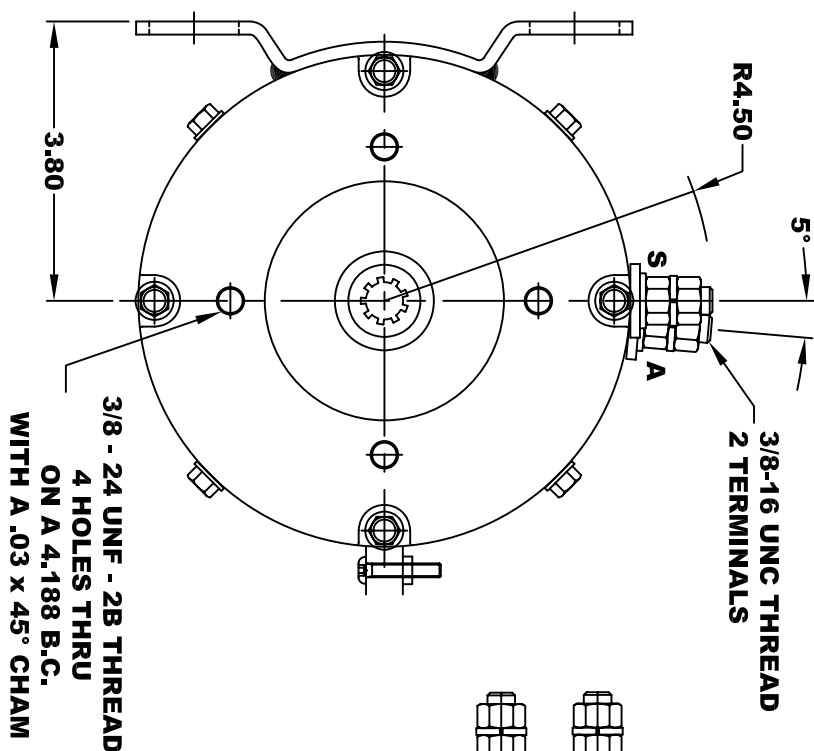
**INTERNAL INVOLUTE SPLINE SPECIFICATION**  
FLAT ROOT SIDE FIT (PER A.N.S.I. B92.1 CLASS 5)

NO. OF TEETH \_\_\_\_\_ 9  
SPLINE PITCH \_\_\_\_\_ 16 / 32  
PRESSURE ANGLE \_\_\_\_\_ 30°  
BASE Ø \_\_\_\_\_ .4871 REF  
PITCH Ø \_\_\_\_\_ .5625 REF  
MAJOR Ø \_\_\_\_\_ .651  
FORM Ø \_\_\_\_\_ .629  
MINOR Ø \_\_\_\_\_ .509 - .514

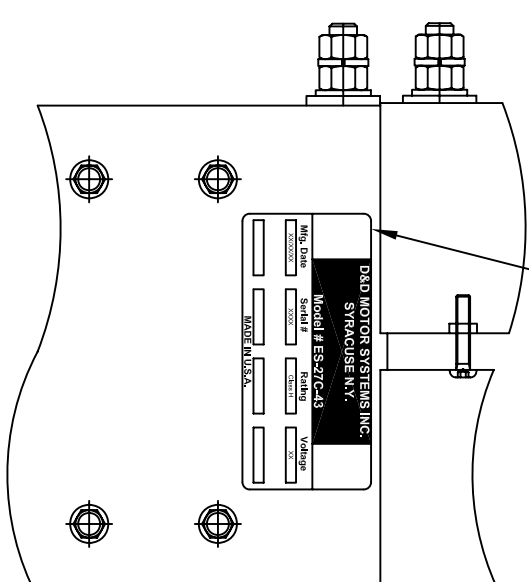
	.010	A
	.010	B

**CIRCULAR SPACE WIDTH**  
MAX ACTUAL \_\_\_\_\_ .1008  
MIN EFFECTIVE \_\_\_\_\_ .0982  
MAX DIMENSION BETWEEN  
TWO PINS \_\_\_\_\_ .3972  
PIN Ø \_\_\_\_\_ .1080

3/8-16 UNC THREAD  
2 TERMINALS

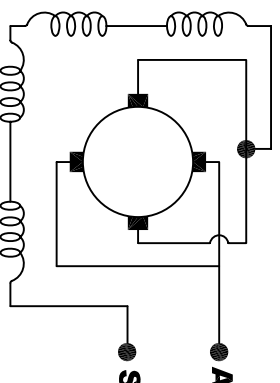


POSITION OF  
NAME LABEL



**MOTOR WEIGHT: 52 LBS**  
CLASS "H" INSULATION  
PERFORMANCE SPEC: 43

**MOTOR WIRING CONNECTIONS:**  
CGW ROTATION DRIVE END  
CONNECT ONE POWER CABLE TO TERMINAL A  
CONNECT THE OTHER POWER CABLE TO TERMINAL S



**ELECTRICAL WIRING DIAGRAM**

THIS PRINT IS THE PROPERTY OF D&D MOTOR SYSTEMS INC.  
DO NOT SCALE  
WORK TO DIMENSIONS  
TOLERANCES UNLESS OTHERWISE SPECIFIED ARE AS FOLLOWS  
.XX \_\_\_\_\_ .01  
.XXX \_\_\_\_\_ .005  
.XX ROUGH CASTING \_\_\_\_\_ .03  
HOLES \_\_\_\_\_ -.001 / +.006  
ANGLES \_\_\_\_\_ 0°30"

**D & D MOTOR SYSTEMS INC**

**MOTOR OUTLINE**

SIZE	DRAWN DATE	RELEASE DATE	DWG NO. / PART NO.	REV
B	10-15-13		ES-27C-43	
SCALE	STF	DRAWN BY	MJG	REV DATE