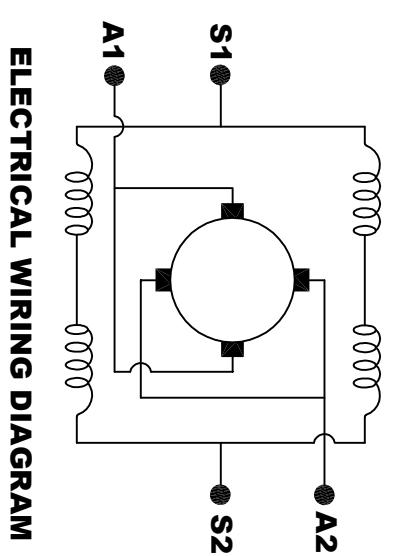
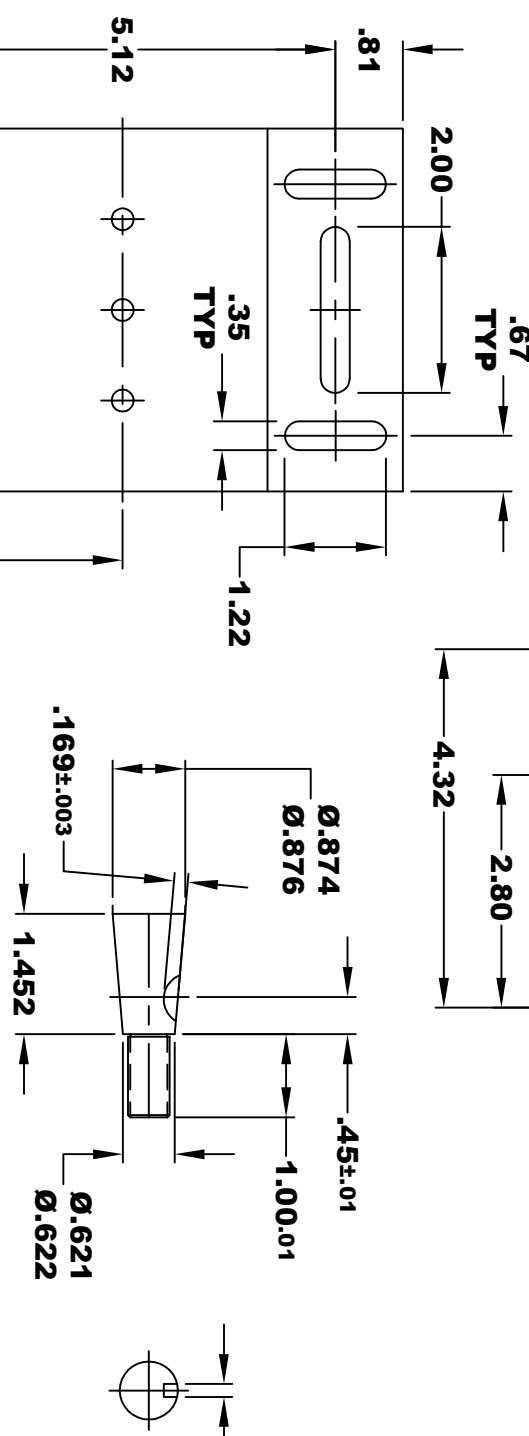
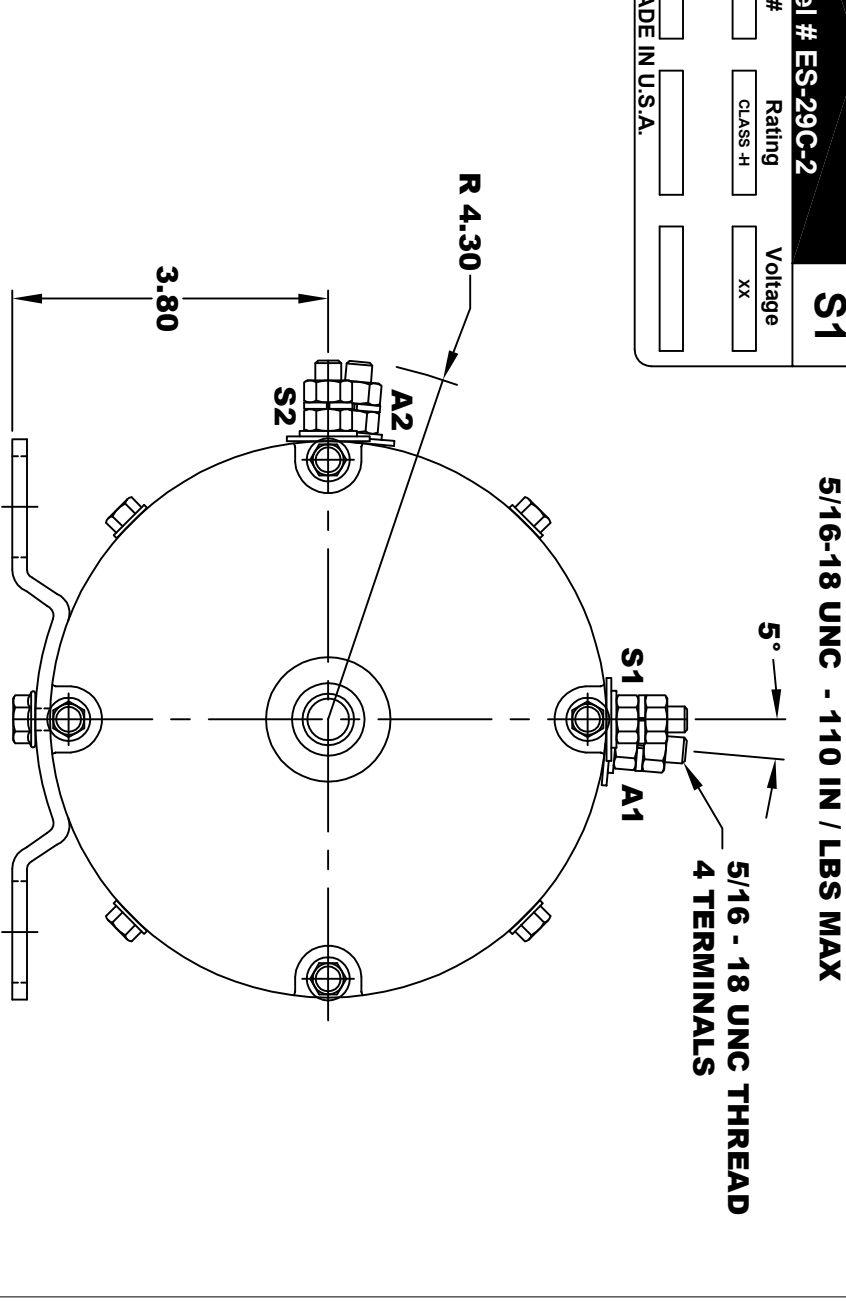
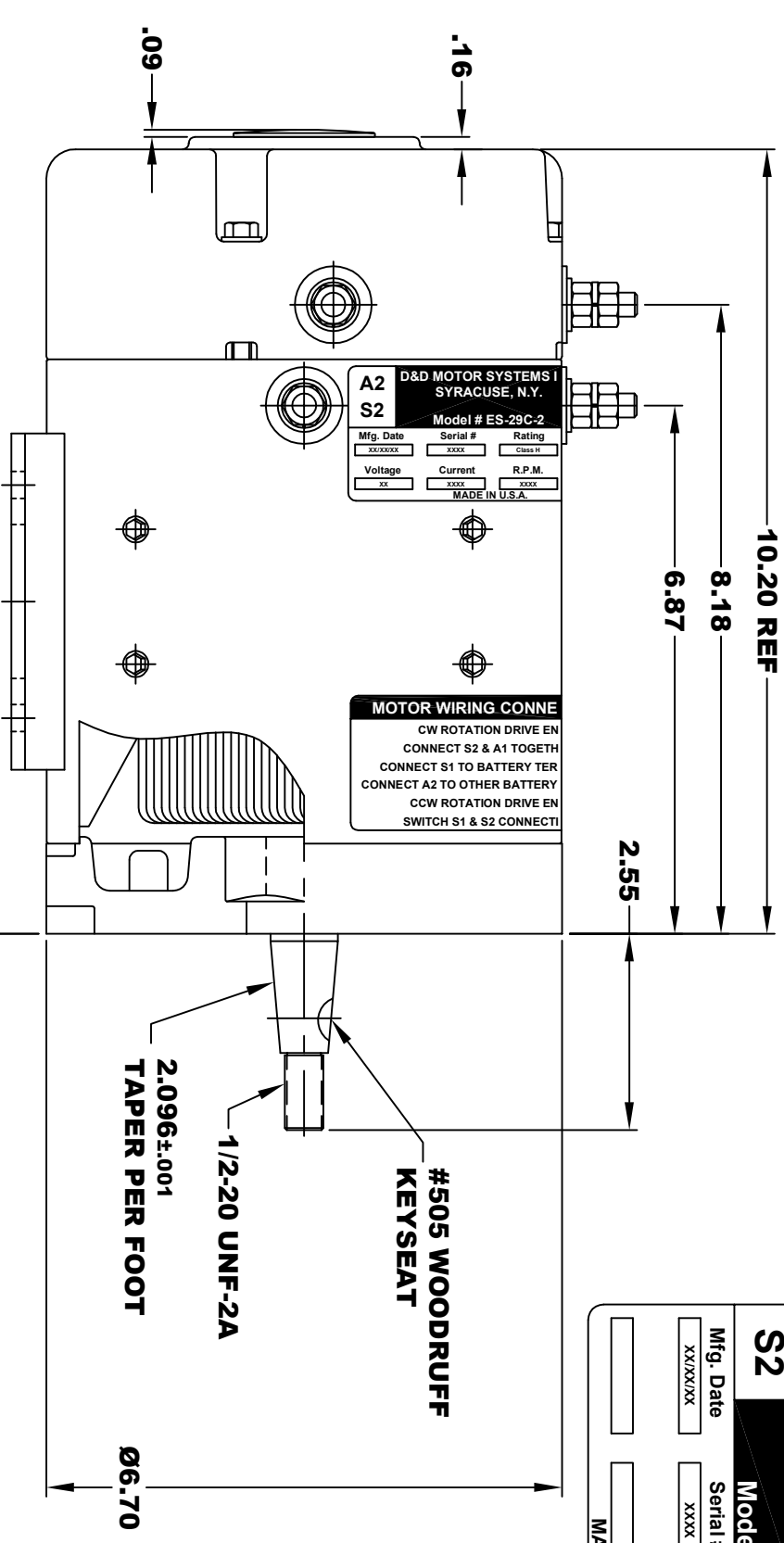


D&D MOTOR SYSTEMS INC.
SYRACUSE N.Y.
Model # ES-29C-2

A2	S2	Mfg. Date	Serial #	Rating	Voltage
		XX/XX/XX	XXXX	CLASS-H	XX
				MADE IN U.S.A.	

A1

S1	Mfg. Date	Serial #	Rating	Voltage
	XX/XX/XX	XXXX	CLASS-H	XX
			MADE IN U.S.A.	



MOTOR WIRING CONNECTIONS:
CW ROTATION DRIVE END
CONNECT S2 & A1 TOGETHER
CONNECT S1 TO BATTERY TERMINAL
CONNECT A2 TO OTHER BATTERY TERMINAL
CCW ROTATION DRIVE END
SWITCH S1 & S2 CONNECTIONS

NOTE:
G.E. PART NUMBER: 5BC48JB500
AMD PART NUMBER: A10-4015

MOTOR WEIGHT: 52 LBS
CLASS "H" INSULATION
PERFORMANCE SPEC: 2

D & D MOTOR SYSTEMS INC

MOTOR OUTLINE

SIZE	DRAWN DATE	RELEASE DATE	DWG NO. / PART NO.	REV
B	5-25-16		ES-29C-2	R1
SCALE	STF	DRAWN BY	MJG	REV DATE
				5-1-17