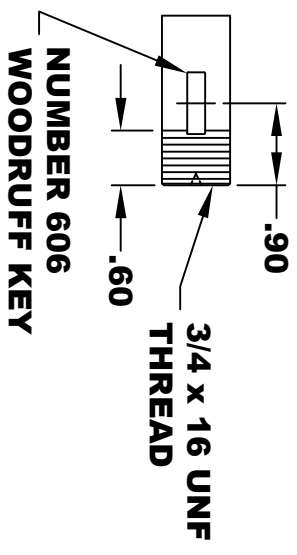
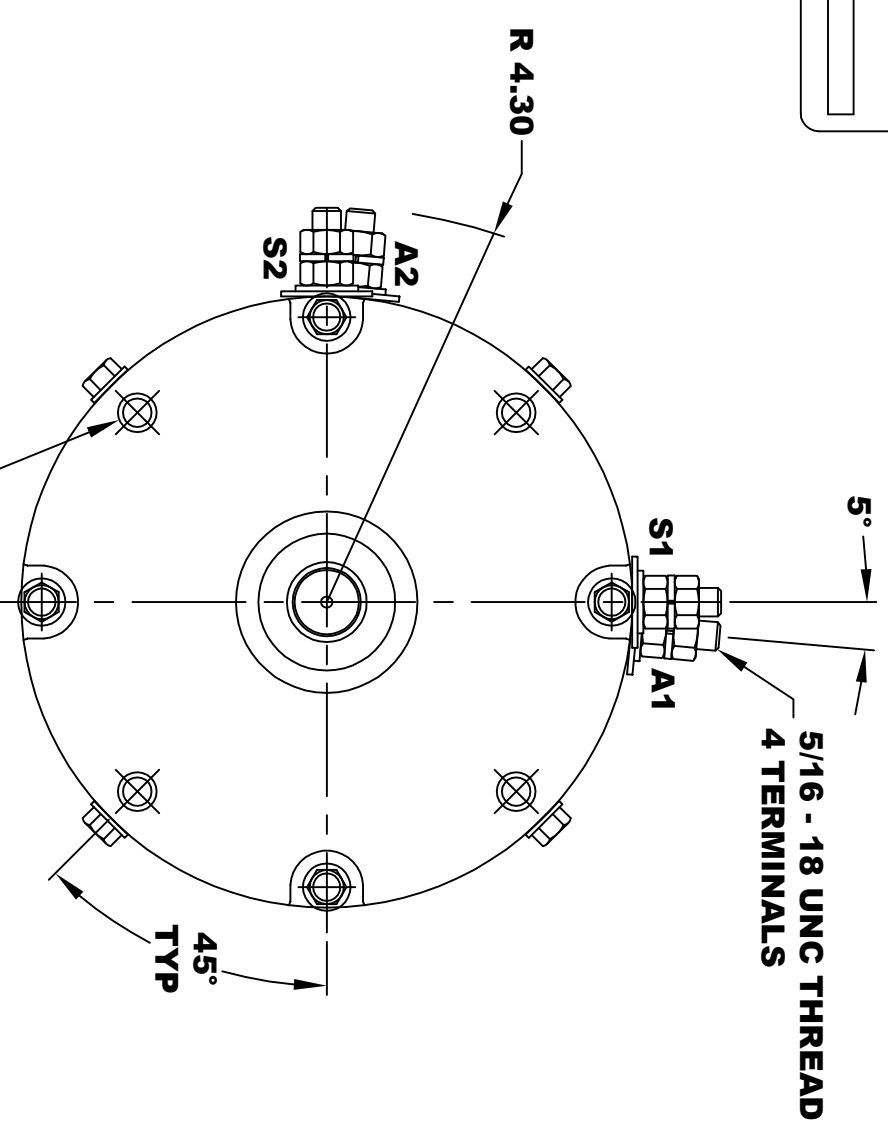
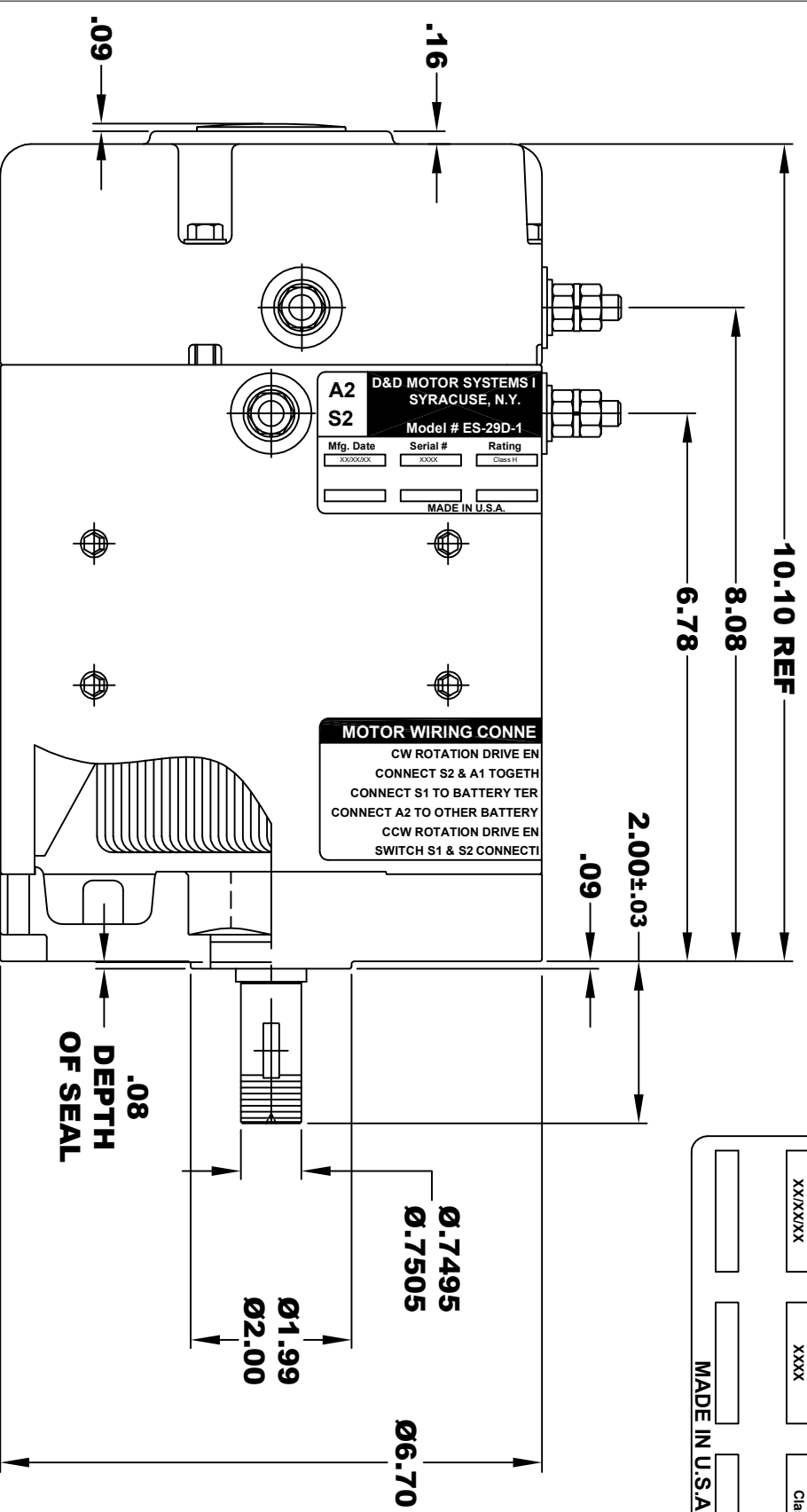
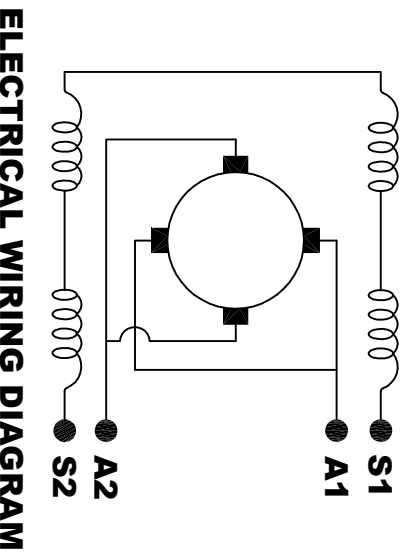


**TORQUE SPECIFICATION FOR  
POWER CABLE SECURING TOP NUTS  
5/16-18 UNC - 110 IN / LBS MAX**

<b>D&amp;D MOTOR SYSTEMS INC.</b>			
<b>SYRACUSE N.Y.</b>			
<b>Model # ES-29D-1</b>			
<b>A2</b>	<b>S2</b>	<b>A1</b>	<b>S1</b>
Mfg. Date	Serial #	Rating	Voltage
XXXXXX	XXXX	Class H	XX
		MADE IN U.S.A.	



**MOTOR WEIGHT: 51 LBS  
CLASS "H" INSULATION  
PERFORMANCE SPEC: 1**



**MOTOR WIRING CONNECTIONS:**  
**CW ROTATION DRIVE END**  
CONNECT S2 & A1 TOGETHER  
CONNECT S1 TO BATTERY TERMINAL  
**CCW ROTATION DRIVE END**  
CONNECT A2 TO OTHER BATTERY TERMINAL  
SWITCH S1 & S2 CONNECTIONS

THIS PRINT IS THE PROPERTY OF D&D MOTOR SYSTEMS INC.  
DO NOT SCALE  
WORK TO DIMENSIONS  
TOLERANCES UNLESS OTHERWISE SPECIFIED ARE AS FOLLOWS  
XX .01  
.XXX .005  
.XX ROUGH CASTING .03  
HOLES .001 / +.006  
ANGLES 0.30"

<b>D &amp; D MOTOR SYSTEMS INC</b>			
<b>MOTOR OUTLINE</b>			
SIZE	DRAWN DATE	RELEASE DATE	DWG NO. / PART NO.
B	12-27-16		ES-29D-1
SCALE	STF	DRAWN BY	REV DATE
		MJG	