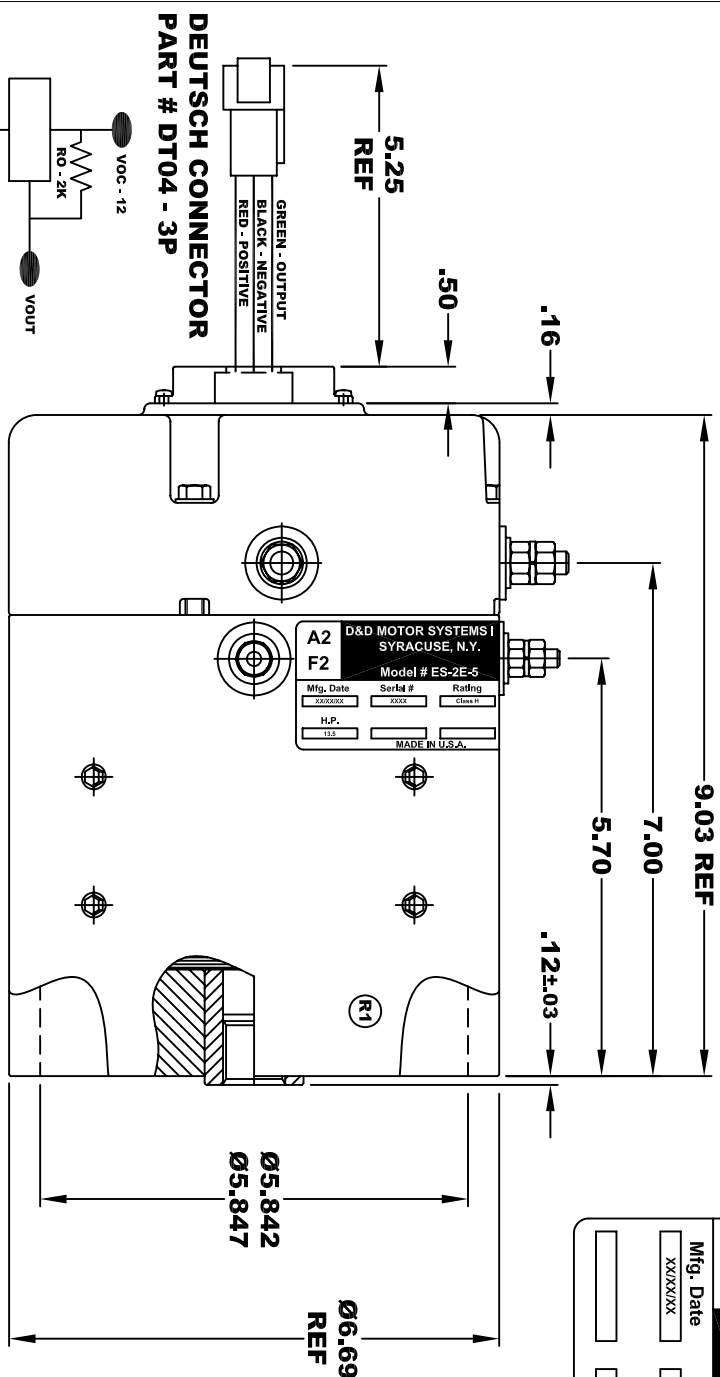


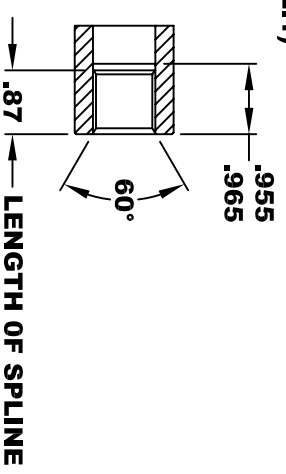
| | | | |
|-----------------------------------|-----------|-----------|-----------|
| D&D MOTOR SYSTEMS INC. | | | |
| SYRACUSE N.Y. | | | |
| A2 | A1 | F2 | F1 |
| Model # ES-2E-5 | | | |
| Mfg. Date | Serial # | Rating | Voltage |
| XXXX/XX | XXXX | Class H | 48 |
| MADE IN U.S.A. | | | |



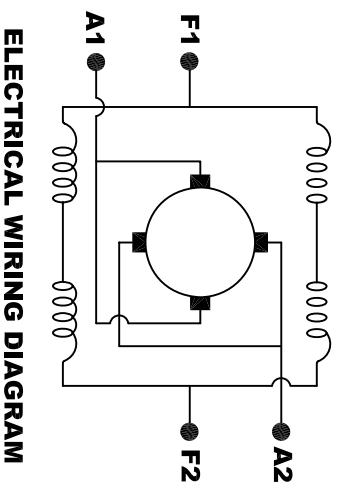
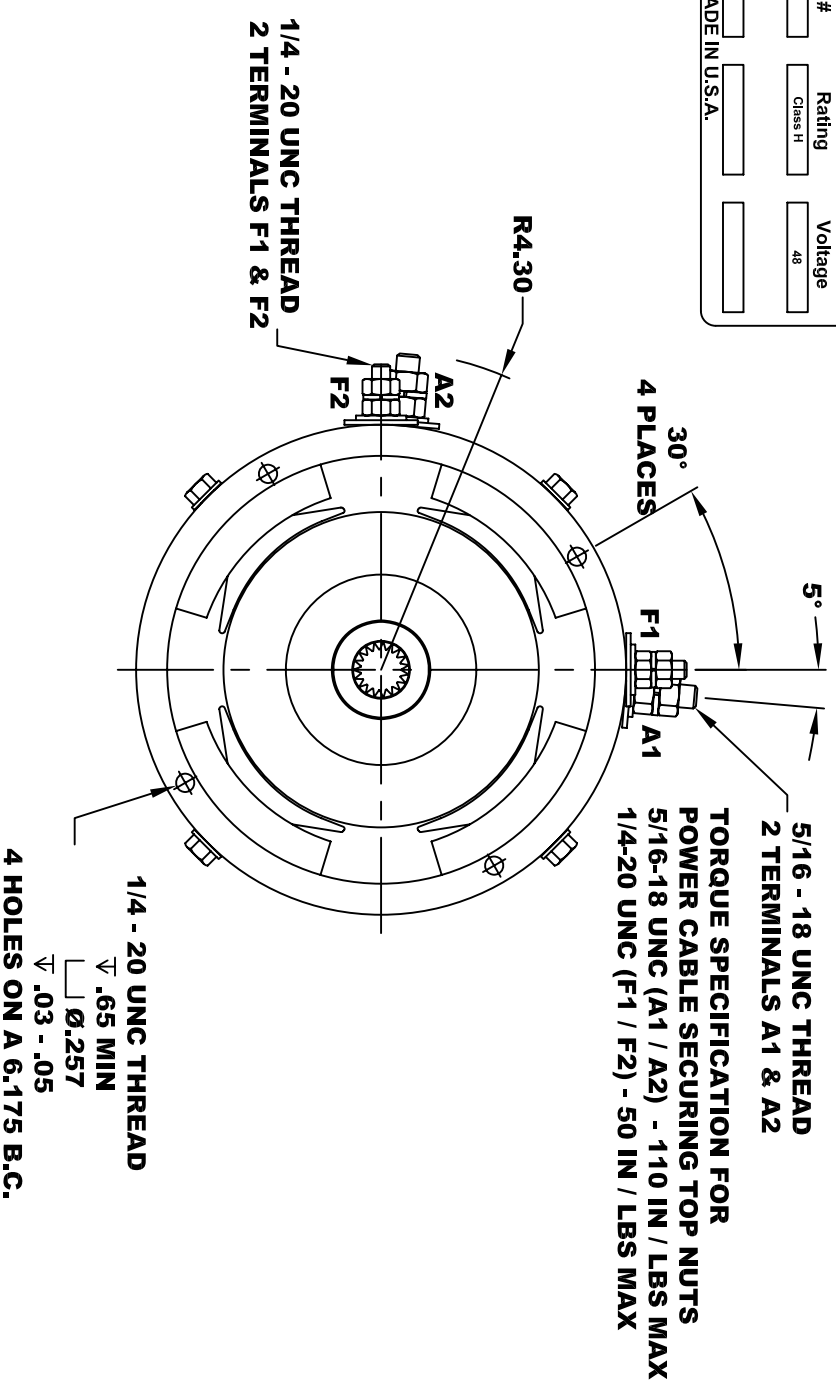
SPEED SENSOR ELECTRICAL SPECIFICATION:
 -4.5V TO 24V OPERATING VOLTAGE
 -20°C TO 85°C OPERATING TEMPERATURE
 -CURRENT SINKING UP TO 25mA
 -AN EXTERNAL OUTPUT PULL UP RESISTOR IS REQUIRED
 -SENSOR IS DESIGNED TO OPERATE WITH 3 N/S POLEPAIRS
 -THE OPERATIONAL DISTANCE BETWEEN THE MAGNET
 AND THE HOUSING, INCLUDING ANY RUNOUT
 SHOULD NOT EXCEED .030 INCHES

**INTERNAL INVOLUTE SPLINE SPECIFICATION
 CLASS 5 FILLET ROOT SIDE FIT (PER A.N.S.I. B92.1)**

| | |
|------------------------------------|-------------|
| NO. OF TEETH | 19 |
| SPLINE PITCH | 24 / 48 |
| PRESSURE ANGLE | 45° |
| BASE Ø | .5597 REF |
| PITCH Ø | .7916 REF |
| MAJOR Ø | .850 - .859 |
| FORM Ø | .835 |
| MINOR Ø | .767 - .772 |
| CIRCULAR SPACE WIDTH | .0764 |
| EFFECTIVE SPACE WIDTH | .0738 |
| MAX. DIMENSION BETWEEN TWO PINS | .6714 |
| PIN Ø | .0800 |
| SPLINE HARDNESS TO BE R/C | 26-34 |



**MOTOR WEIGHT: 46 LBS
 CLASS "H" INSULATION
 PERFORMANCE SPEC: 5**



MOTOR WIRING CONNECTIONS:
 CW ROTATION DRIVE END
 CONNECT A1 & F1 TO ONE BATTERY TERMINAL
 CONNECT A2 & F2 TO OTHER BATTERY TERMINAL
 CCW ROTATION DRIVE END
 SWITCH F1 & F2 CONNECTIONS

D & D MOTOR SYSTEMS INC

MOTOR OUTLINE

THIS PRINT IS THE PROPERTY OF D&D MOTOR SYSTEMS INC.
 DO NOT SCALE
 WORK TO DIMENSIONS
 TOLERANCES UNLESS OTHERWISE SPECIFIED ARE AS FOLLOWS
 .XX .01
 .XXX .005
 .XX ROUGH CASTING .03
 HOLES .001 / +.006
 ANGLES 0°30"

| | | | | |
|-------|------------|--------------|--------------------|----------|
| SIZE | DRAWN DATE | RELEASE DATE | DWG NO. / PART NO. | REV |
| B | 12-29-09 | | ES-2E-5 | R1 |
| SCALE | STF | DRAWN BY | MJG | REV DATE |
| | | | | 1-28-10 |