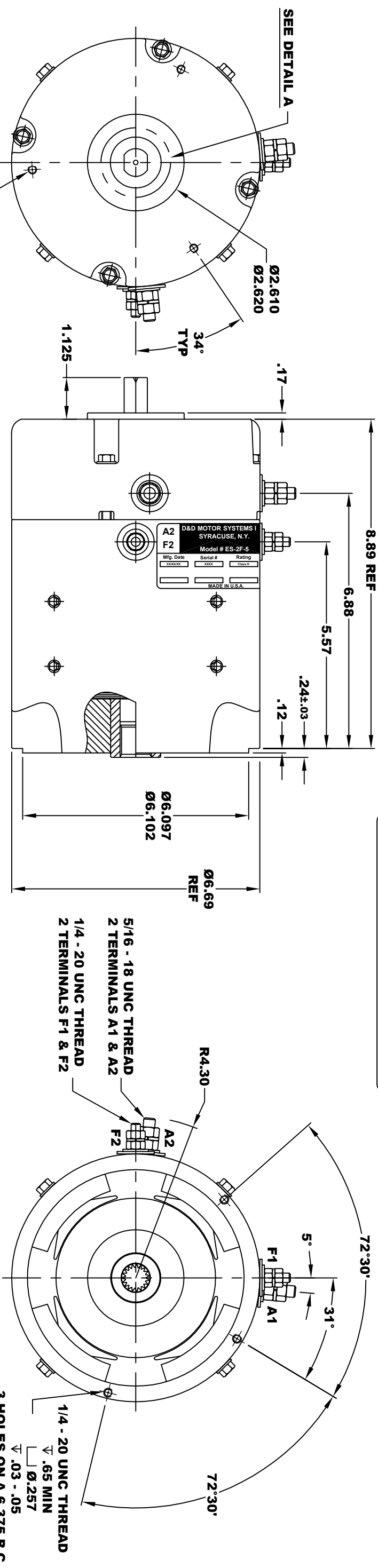


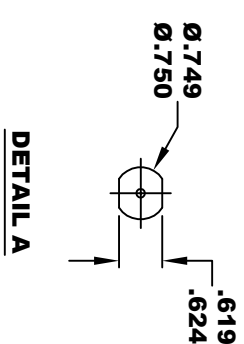
# DRAFT

<b>A2</b>		<b>A1</b>	
<b>D&amp;D MOTOR SYSTEMS INC.</b>			
<b>SYRACUSE N.Y.</b>			
<b>F2</b>		<b>F1</b>	
<b>Model # ES-2F-5</b>			
Mfg. Date	Serial #	Rating	Voltage
XXXXXX	XXXX	Class H	XX
MADE IN U.S.A.			

**TORQUE SPECIFICATION FOR  
POWER CABLE SECURING TOP NUTS**  
 5/16-18 UNC (A1 / A2) - 110 IN / LBS MAX  
 1/4-20 UNC (F1 / F2) - 50 IN / LBS MAX

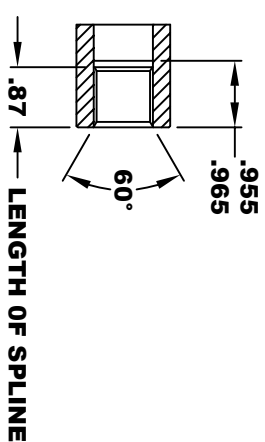


**M6 x 1 THREAD  
TAPPED THRU  
EQUALLY SPACED  
ON A  $\varnothing 5.591$  B.C.  
3 PLACES**

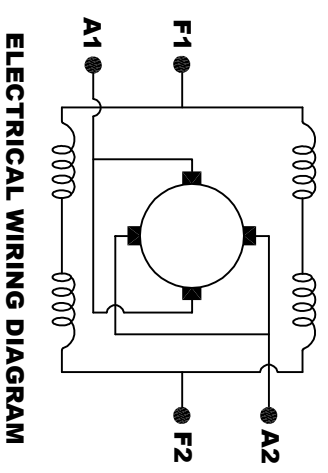


**INTERNAL INVOLUTE SPLINE SPECIFICATION  
CLASS 5 FILLET ROOT SIDE FIT (PER A.N.S.I. B92.1)**

- NO. OF TEETH \_\_\_\_\_ 19
- SPLINE PITCH \_\_\_\_\_ 24 / 48
- PRESSURE ANGLE \_\_\_\_\_ 45°
- BASE  $\varnothing$  \_\_\_\_\_ .5597 REF
- PITCH  $\varnothing$  \_\_\_\_\_ .7916 REF
- MAJOR  $\varnothing$  \_\_\_\_\_ .850 - .859
- FORM  $\varnothing$  \_\_\_\_\_ .835
- MINOR  $\varnothing$  \_\_\_\_\_ .767 - .772
- CIRCULAR SPACE WIDTH \_\_\_\_\_ .0764
- EFFECTIVE SPACE WIDTH \_\_\_\_\_ .0738
- MAX. DIMENSION BETWEEN  
TWO PINS \_\_\_\_\_ .6714
- PIN  $\varnothing$  \_\_\_\_\_ .0800
- SPLINE HARDNESS TO BE R/C 26-34



**MOTOR WEIGHT 46 LBS  
CLASS "H" INSULATION  
PERFORMANCE SPEC: 5**



**MOTOR WIRING CONNECTIONS:**  
 CW ROTATION DRIVE END  
 CONNECT A1 & F1 TO ONE BATTERY TERMINAL  
 CONNECT A2 & F2 TO OTHER BATTERY TERMINAL  
 CCW ROTATION DRIVE END  
 SWITCH F1 & F2 CONNECTIONS

THIS PRINT IS THE PROPERTY OF D&D MOTOR SYSTEMS INC.  
 DO NOT SCALE  
 WORK TO DIMENSIONS  
 TOLERANCES UNLESS OTHERWISE SPECIFIED ARE AS FOLLOWS

XXX \_\_\_\_\_ .01

XX \_\_\_\_\_ .005

.XXX \_\_\_\_\_ .03

.XX ROUGH CASTING \_\_\_\_\_ .03

HOLES \_\_\_\_\_ .001 / +.006

ANGLES \_\_\_\_\_ 0°30"

**D & D MOTOR SYSTEMS INC**

## MOTOR OUTLINE

SIZE	DRAWN DATE	RELEASE DATE	DWG NO. / PART NO.	REV
B	1-31-18		ES-2F-5 DRAFT	
SCALE	STF	DRAWN BY	MJG	REV DATE