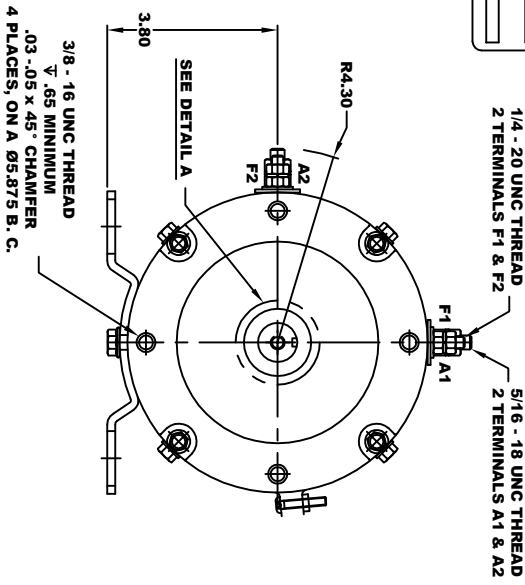
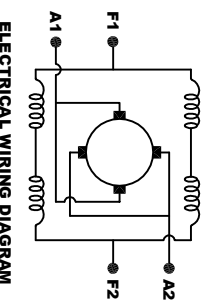
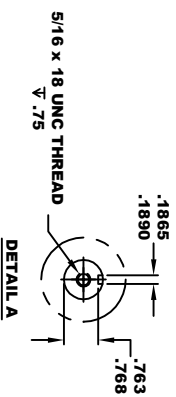
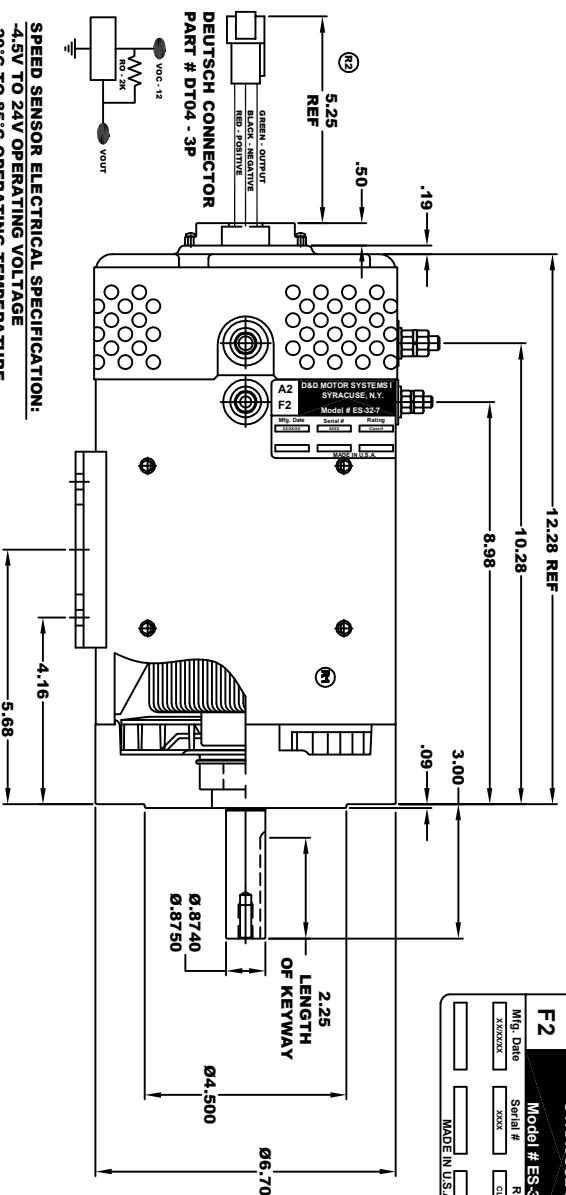
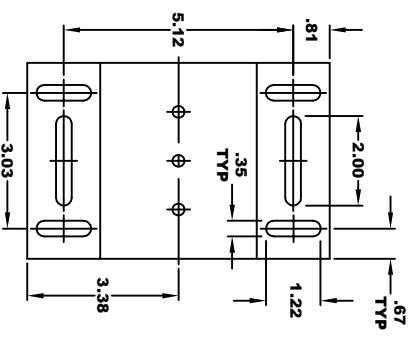


D&D MOTOR SYSTEMS INC.			
SYRACUSE, N.Y.			
A2	F2	A1	F1
Mfg. Date	Serial #	Rating	Voltage
XXXXXX	XXXX	CLASS 1	XX
MADE IN U.S.A.			



TORQUE SPECIFICATION FOR POWER CABLE SECURING TOP NUTS
 5/16-18 UNC (A1 / A2) - 110 IN LBS MAX
 1/4-20 UNC (F1 / F2) - 50 IN LBS MAX

SPEED SENSOR ELECTRICAL SPECIFICATION:
 -4.5V TO 24V OPERATING VOLTAGE
 -20°C TO 85°C OPERATING TEMPERATURE
 -CURRENT SINKING UP TO 25mA
 -AN EXTERNAL OUTPUT PULL UP RESISTOR IS REQUIRED
 -SENSOR IS DESIGNED TO OPERATE WITH 4 N/S POLEPAIRS
 -THE OPERATIONAL DISTANCE BETWEEN THE MAGNET AND THE HOUSING, INCLUDING ANY RUNOUT SHOULD NOT EXCEED .030 INCHES



MOTOR WEIGHT: 62 LBS
CLASS "H" INSULATION
PERFORMANCE SPEC: 7

THIS PRINT IS THE PROPERTY OF D&D MOTOR SYSTEMS INC.
 DO NOT SCALE
 WORK TO DIMENSIONS
 TOLERANCES UNLESS OTHERWISE SPECIFIED ARE AS FOLLOWS
 .XX- .01
 .XXX- .005
 .XX-ROUGH CASTING .03
 HOLES .001 / +.006
 ANGLES 0°-30°

D & D MOTOR SYSTEMS INC			
MOTOR OUTLINE			
SIZE	DRAWN DATE	RELEASE DATE	DRG NO. / PART NO.
B	10-21-24		ES-32-7
SCALE	DRAWN BY	REV DATE	REV
STF	MJG		