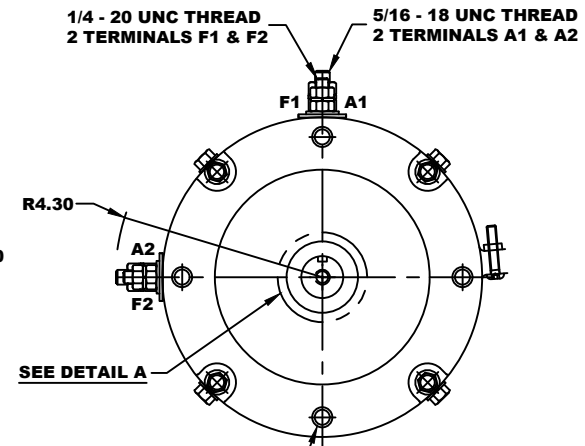
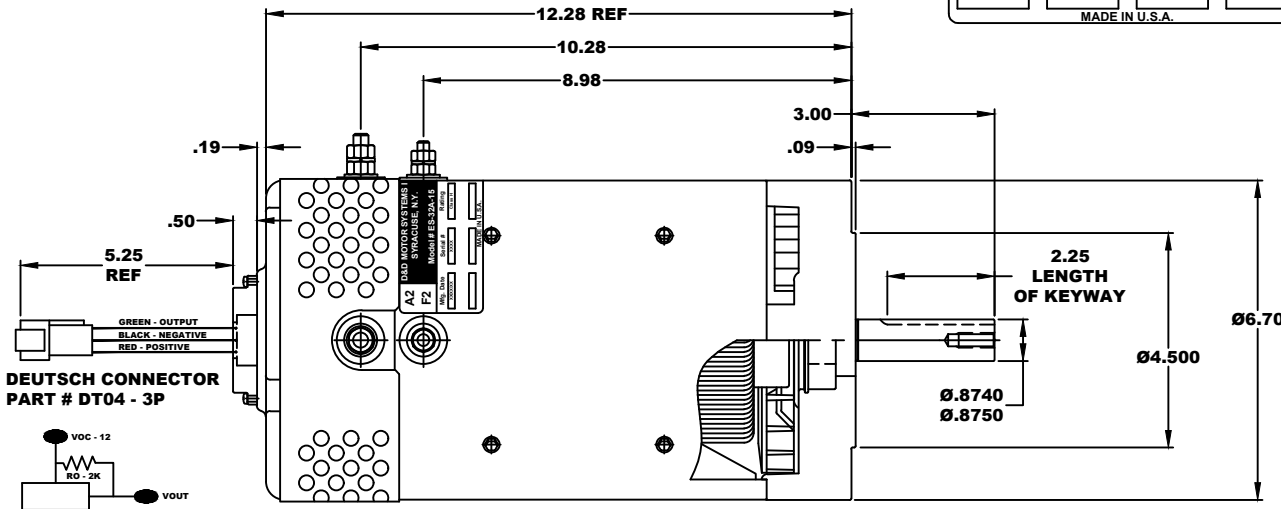
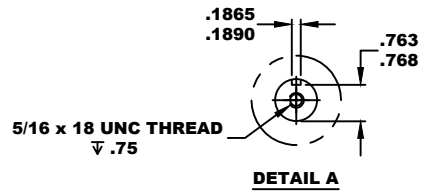


A2	D&D MOTOR SYSTEMS INC.		A1
F2	SYRACUSE N.Y.		F1
Model # ES-32A-15			
Mfg. Date	Serial #	Rating	Voltage
XX/XXXX	XXXX	CLASS-H	36V-72V
MADE IN U.S.A.			

TORQUE SPECIFICATION FOR POWER CABLE SECURING TOP NUTS
5/16-18 UNC (A1 / A2) - 110 IN / LBS MAX
1/4-20 UNC (F1 / F2) - 50 IN / LBS MAX

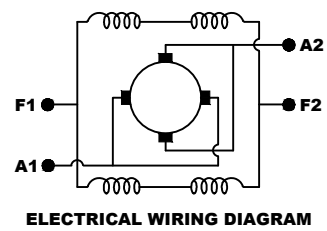


SPEED SENSOR ELECTRICAL SPECIFICATION:
 -4.5V TO 24V OPERATING VOLTAGE
 -20°C TO 85°C OPERATING TEMPERATURE
 -CURRENT SINKING UP TO 25mA
 -AN EXTERNAL OUTPUT PULL UP RESISTOR IS REQUIRED
 -SENSOR IS DESIGNED TO OPERATE WITH 4 N/S POLEPAIRS
 THE OPERATIONAL DISTANCE BETWEEN THE MAGNET AND THE HOUSING, INCLUDING ANY RUNOUT SHOULD NOT EXCEED .030 INCHES



3/8 - 16 UNC THREAD
 ∇ .65 MINIMUM
 .03 -.05 x 45° CHAMFER
 4 PLACES, ON A Ø5.875 B. C.

MOTOR WEIGHT: 62 LBS
CLASS "H" INSULATION
PERFORMANCE SPEC: 15 / K-254



MOTOR WIRING CONNECTIONS:
CW ROTATION DRIVE END
 CONNECT A1 & F1 TO ONE BATTERY TERMINAL
 CONNECT A2 & F2 TO OTHER BATTERY TERMINAL
CCW ROTATION DRIVE END
 SWITCH F1 & F2 CONNECTIONS

THIS PRINT IS THE PROPERTY OF D&D MOTOR SYSTEMS INC.

DO NOT SCALE
 WORK TO DIMENSIONS
 TOLERANCES UNLESS OTHERWISE SPECIFIED ARE AS FOLLOWS

.XX	.01
.XXX	.005
.XX ROUGH CASTING	.03
HOLES	-.001 / +.006
ANGLES	0°30'

D & D MOTOR SYSTEMS INC				
MOTOR OUTLINE				
SIZE	DRAWN DATE	RELEASE DATE	DWG NO. / PART NO.	REV
B	6-26-24		ES-32A-15	
SCALE	DRAWN BY		REV DATE	
STF	MJG			