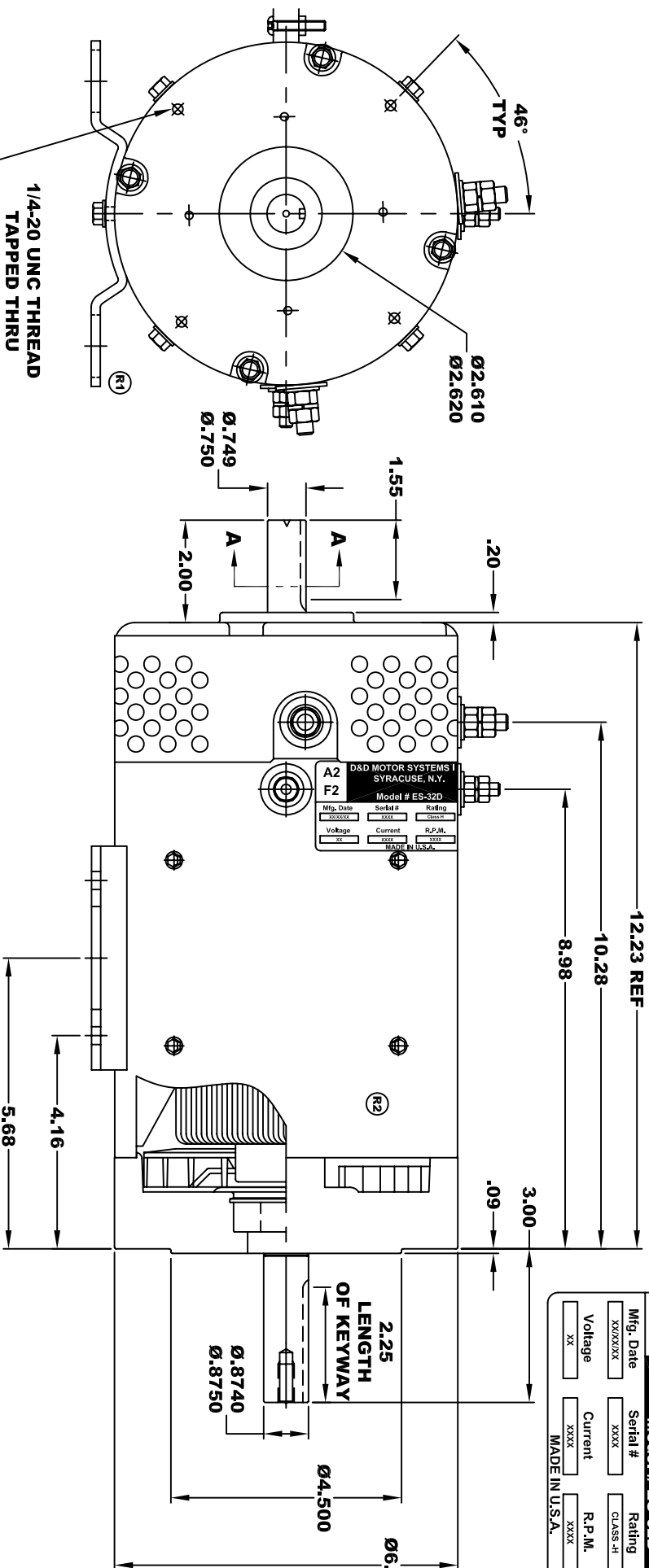


**D&D MOTOR SYSTEMS INC.**  
**SYRACUSE N.Y.**

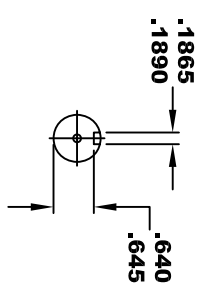
<b>A2</b>	<b>F2</b>	<b>A1</b>	<b>F1</b>
<b>Model # ES-32D</b>			
Mfg. Date	Serial #	Rating	Duty
XXXXXX	XXXX	CLASS -H	32XXNM
Voltage	Current	R.P.M.	H.P.
XX	XXXX	XXXX	XX
MADE IN U.S.A.			

**TORQUE SPECIFICATION FOR  
 POWER CABLE SECURING TOP NUTS**  
 5/16-18 UNC (A1 / A2) - 110 IN / LBS MAX  
 1/4-20 UNC (F1 / F2) - 50 IN / LBS MAX

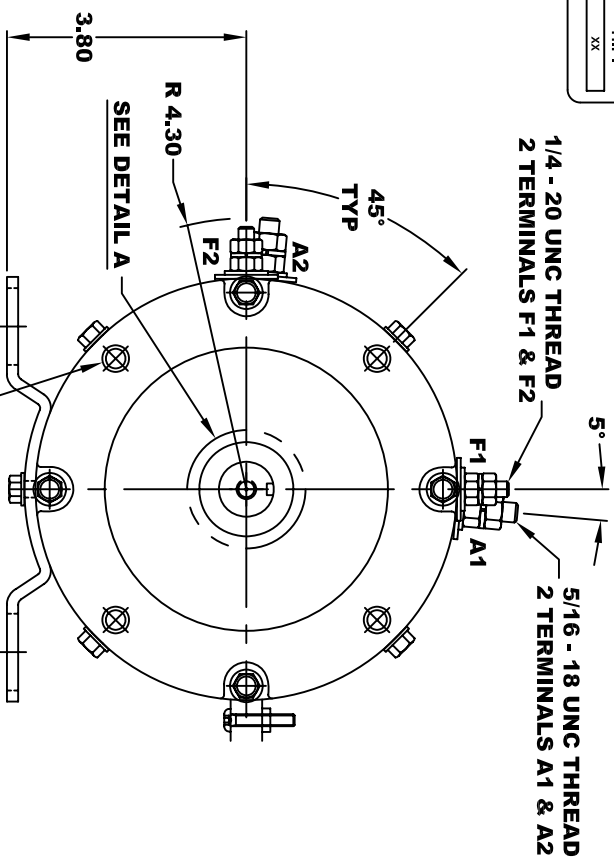
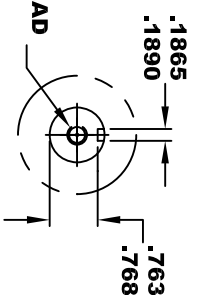


1/4-20 UNC THREAD  
 TAPPED THRU  
 EQUALLY SPACED  
 ON A Ø5.875 B.C.  
 4 PLACES

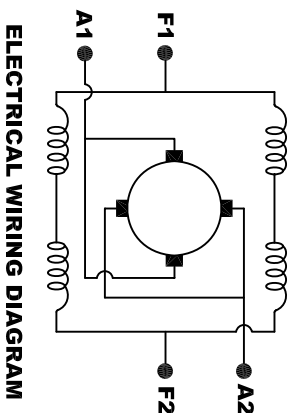
**SECTION A-A**



**DETAIL A**

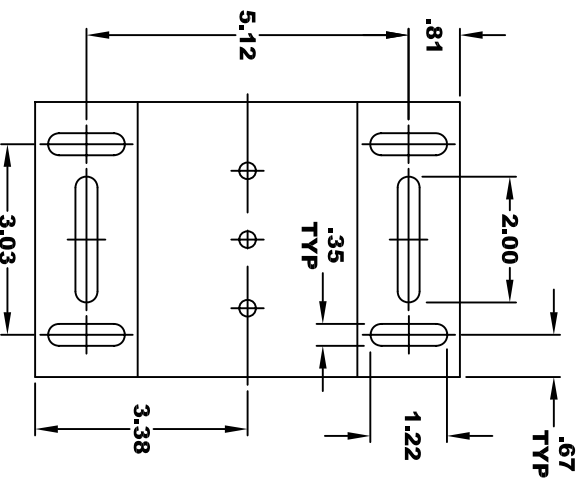


3/8 - 16 UNC THREAD  
 .03 - .05 x 45° CHAMFER  
 4 PLACES, ON A Ø5.875 B.C.



**ELECTRICAL WIRING DIAGRAM**

**MOTOR WIRING CONNECTIONS:**  
 CW ROTATION DRIVE END  
 CONNECT A1 & F1 TO ONE BATTERY TERMINAL  
 CONNECT A2 & F2 TO OTHER BATTERY TERMINAL  
 CCW ROTATION DRIVE END  
 SWITCH F1 & F2 CONNECTIONS



**MOTOR WEIGHT: 62 LBS**  
**CLASS "H" INSULATION**  
**PERFORMANCE SPEC: 7**

THIS PRINT IS THE PROPERTY OF D&D MOTOR SYSTEMS INC.  
 DO NOT SCALE  
 WORK TO DIMENSIONS  
 TOLERANCES UNLESS OTHERWISE SPECIFIED ARE AS FOLLOWS

.XX	.01
.XXX	.005
.XX ROUGH CASTING	.03
HOLES	-.001 / +.006
ANGLES	0°30"

**D & D MOTOR SYSTEMS INC**

**MOTOR OUTLINE**

SIZE	DRAWN DATE	RELEASE DATE	DWG NO. / PART NO.	REV
B	12-10-03		ES-32D	R2
SCALE	STF	DRAWN BY	MJG	REV DATE
				5-8-13