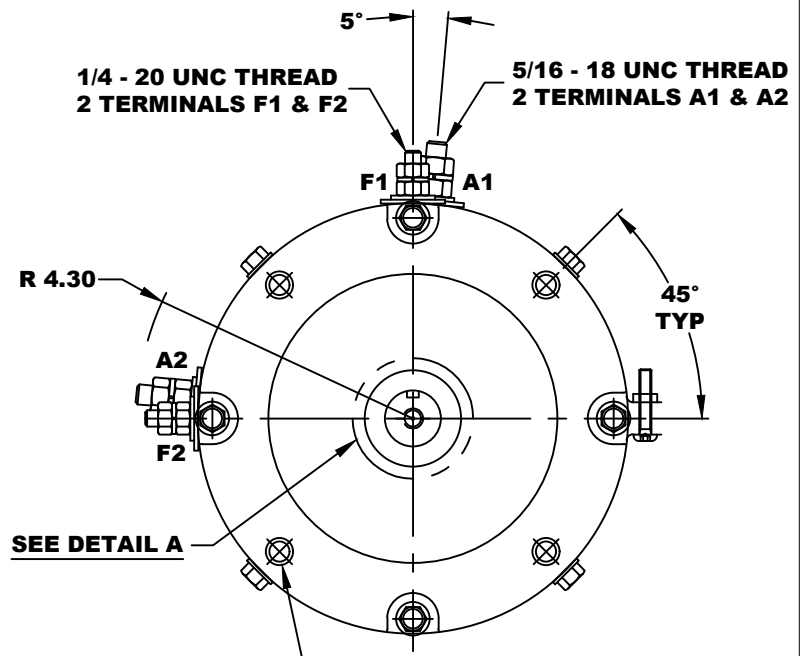
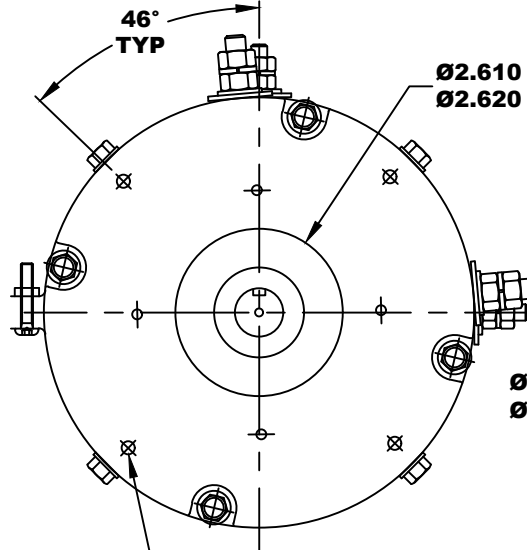
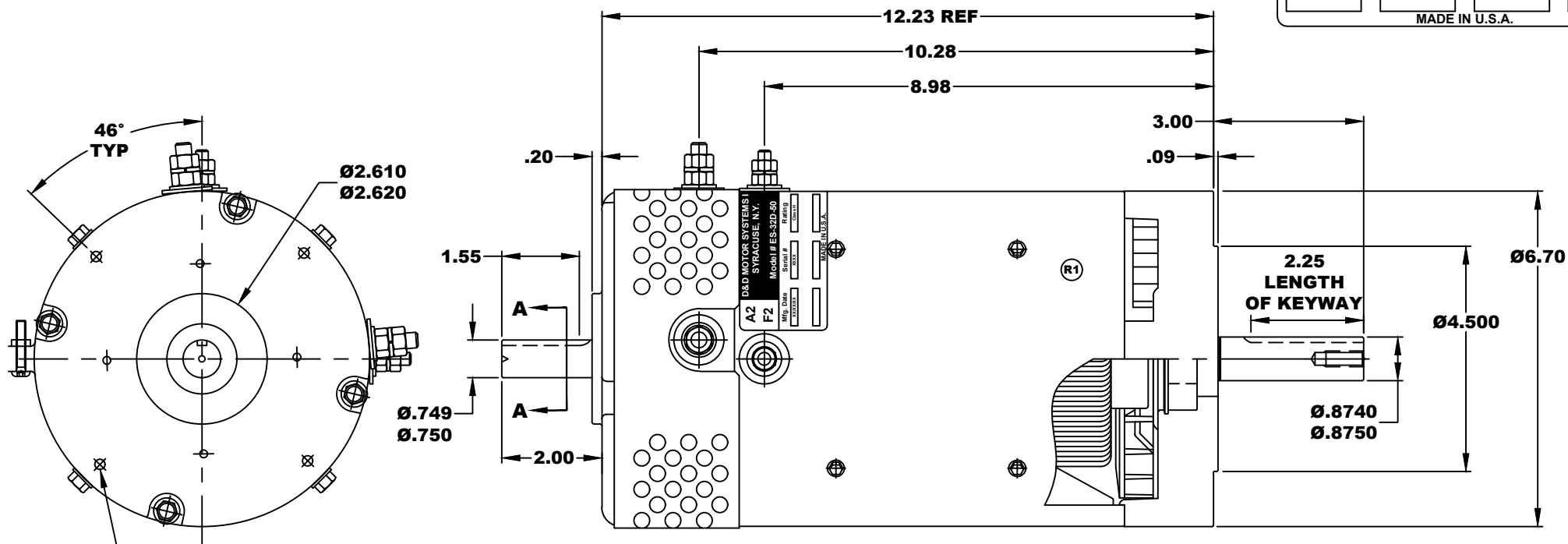


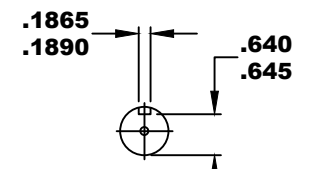
A2	D&D MOTOR SYSTEMS INC.		A1
F2	SYRACUSE N.Y.		F1
Model # ES-32D-50			
Mfg. Date	Serial #	Rating	Voltage
XXXXXX	XXXX	CLASS-H	XX
MADE IN U.S.A.			

**TORQUE SPECIFICATION FOR
POWER CABLE SECURING TOP NUTS**
5/16-18 UNC (A1 / A2) - 110 IN / LBS MAX
1/4-20 UNC (F1 / F2) - 50 IN / LBS MAX

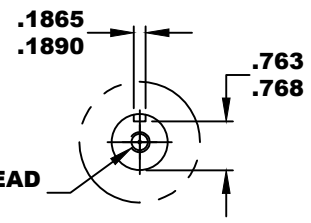


**1/4-20 UNC THREAD
TAPPED THRU
EQUALLY SPACED
ON A Ø5.875 B.C.
4 PLACES**

**3/8 - 16 UNC THREAD
▽ .65 MINIMUM
.03 -.05 x 45° CHAMFER
4 PLACES, ON A Ø5.875 B. C.**



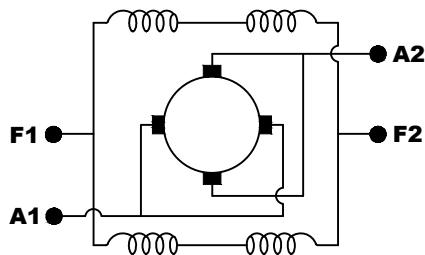
SECTION A-A



DETAIL A

**5/16 x 18 UNC THREAD
▽ .75**

MOTOR WEIGHT: 62 LBS
CLASS "H" INSULATION
PERFORMANCE SPEC: 50 / K-254



ELECTRICAL WIRING DIAGRAM

MOTOR WIRING CONNECTIONS:
CW ROTATION DRIVE END
CONNECT A1 & F1 TO ONE BATTERY TERMINAL
CONNECT A2 & F2 TO OTHER BATTERY TERMINAL
CCW ROTATION DRIVE END
SWITCH F1 & F2 CONNECTIONS

THIS PRINT IS THE PROPERTY OF D&D MOTOR SYSTEMS INC.

DO NOT SCALE
WORK TO DIMENSIONS

TOLERANCES UNLESS OTHERWISE SPECIFIED ARE AS FOLLOWS

.XX	_____	.01
.XXX	_____	.005
.XX ROUGH CASTING	_____	.03
HOLES	_____	-.001 / +.006
ANGLES	_____	0°30"

D & D MOTOR SYSTEMS INC				
MOTOR OUTLINE				
SIZE	DRAWN DATE	RELEASE DATE	DWG NO. / PART NO.	REV
B	2-19-09		ES-32D-50	R1
SCALE	DRAWN BY	REV DATE		
STF	MJG	5-8-13		