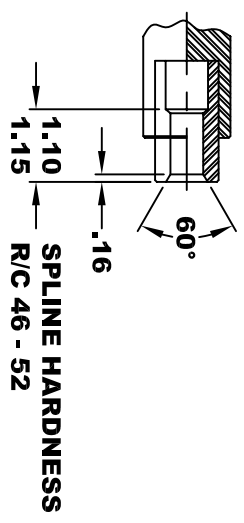
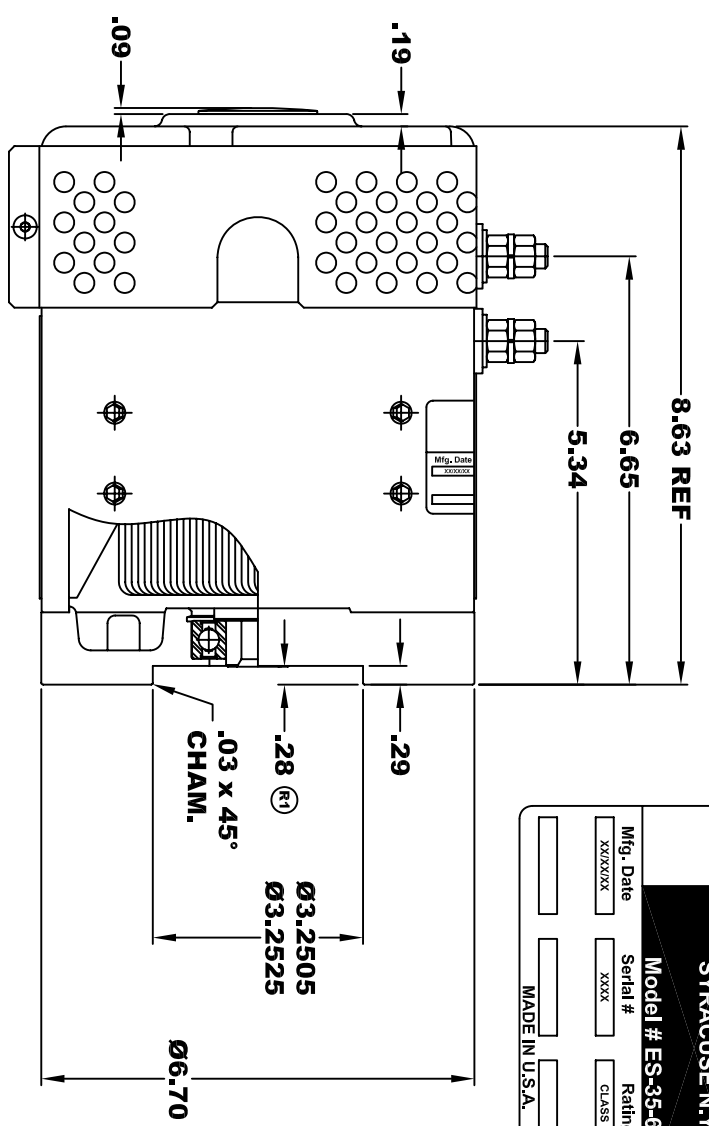


D&D MOTOR SYSTEMS INC.
SYRACUSE N.Y.

Model # ES-35-61

Mfg. Date	Serial #	Rating	Voltage
XXXXXX	XXXX	CLASS H	12
MADE IN U.S.A.			



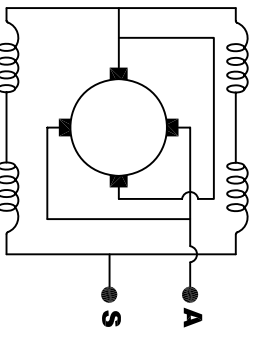
INTERNAL INVOLUTE SPLINE SPECIFICATION
FLAT ROOT SIDE FIT (PER A.N.S.I. B92.1 CLASS 5)

NO. OF TEETH _____ 9
 SPLINE PITCH _____ 16 / 32
 PRESSURE ANGLE _____ 30°
 BASE Ø _____ .4871 REF
 PITCH Ø _____ .5625 REF
 MAJOR Ø _____ .651
 FORM Ø _____ .629
 MINOR Ø _____ .509 - .514

CIRCULAR SPACE WIDTH
 MAX ACTUAL _____ .1008
 MIN EFFECTIVE _____ .0982
 MAX DIMENSION BETWEEN TWO PINS _____ .3972
 PIN Ø _____ .1080

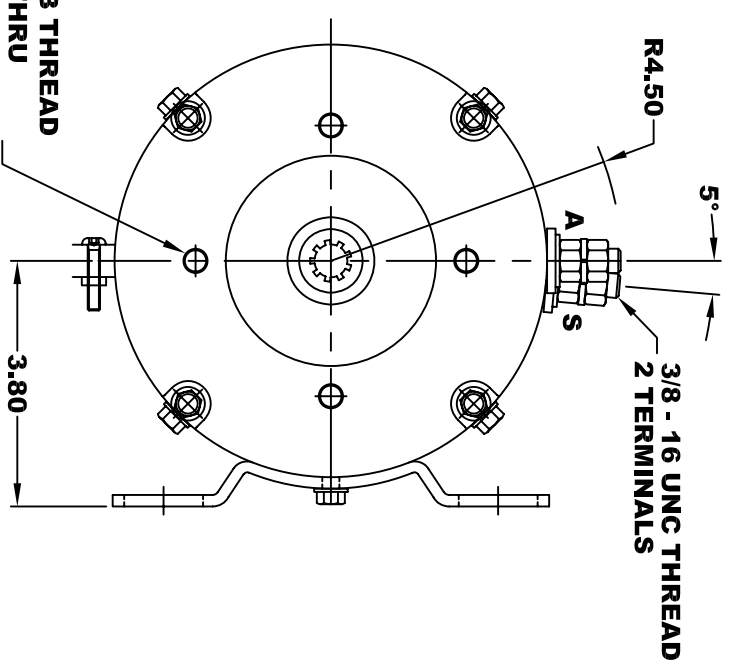
⊙	.010	A
⊔	.010	B

MOTOR WEIGHT: 39 LBS
CLASS "H" INSULATION
PERFORMANCE SPEC: 61

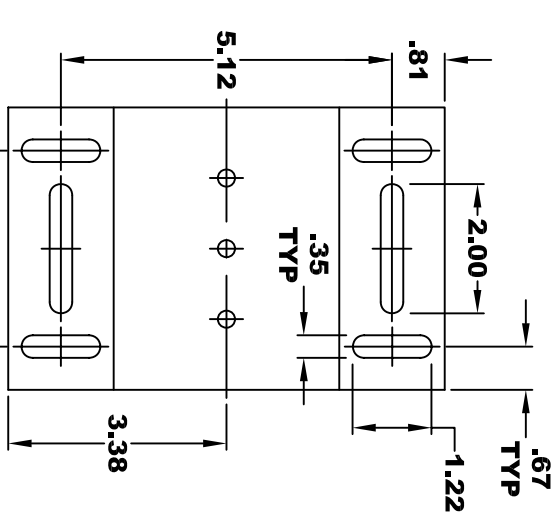
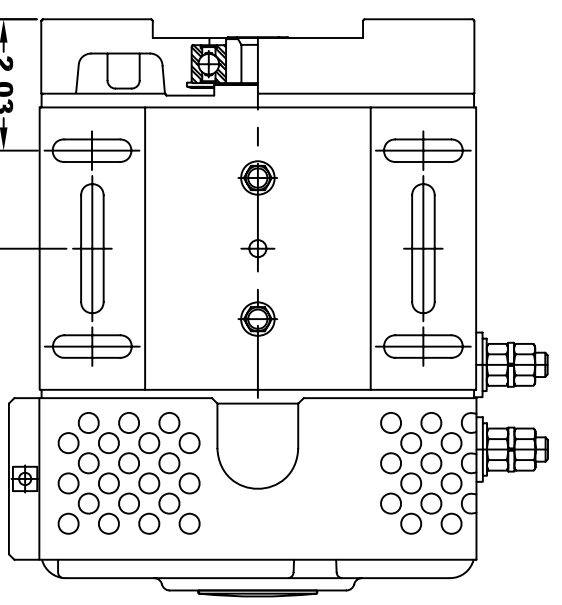


ELECTRICAL WIRING DIAGRAM

3/8 - 24 UNF - 2B THREAD
4 HOLES THRU
ON A 4.188 B.C.
WITH A .03 x 45° CHAM



TORQUE SPECIFICATION FOR POWER CABLE SECURING TOP NUTS
3/8-16 UNC - 140 IN / LBS MAX



MOTOR WIRING CONNECTIONS:
CW ROTATION DRIVE END
CONNECT ONE POWER CABLE TO TERMINAL A
CONNECT THE OTHER POWER CABLE TO TERMINAL S

THIS PRINT IS THE PROPERTY OF D&D MOTOR SYSTEMS INC.
DO NOT SCALE
WORK TO DIMENSIONS
TOLERANCES UNLESS OTHERWISE SPECIFIED ARE AS FOLLOWS

.XXX _____ .005
 .XX _____ .01
 .XX ROUGH CASTING _____ .03
 HOLES _____ -.001 / +.006
 ANGLES _____ 0°30"

D & D MOTOR SYSTEMS INC

MOTOR OUTLINE

SIZE	DRAWN DATE	RELEASE DATE	DWG NO. / PART NO.	REV
B	7-11-05		ES-35-61	R1
SCALE	STF	DRAWN BY	MJG	REV DATE
				10-22-13