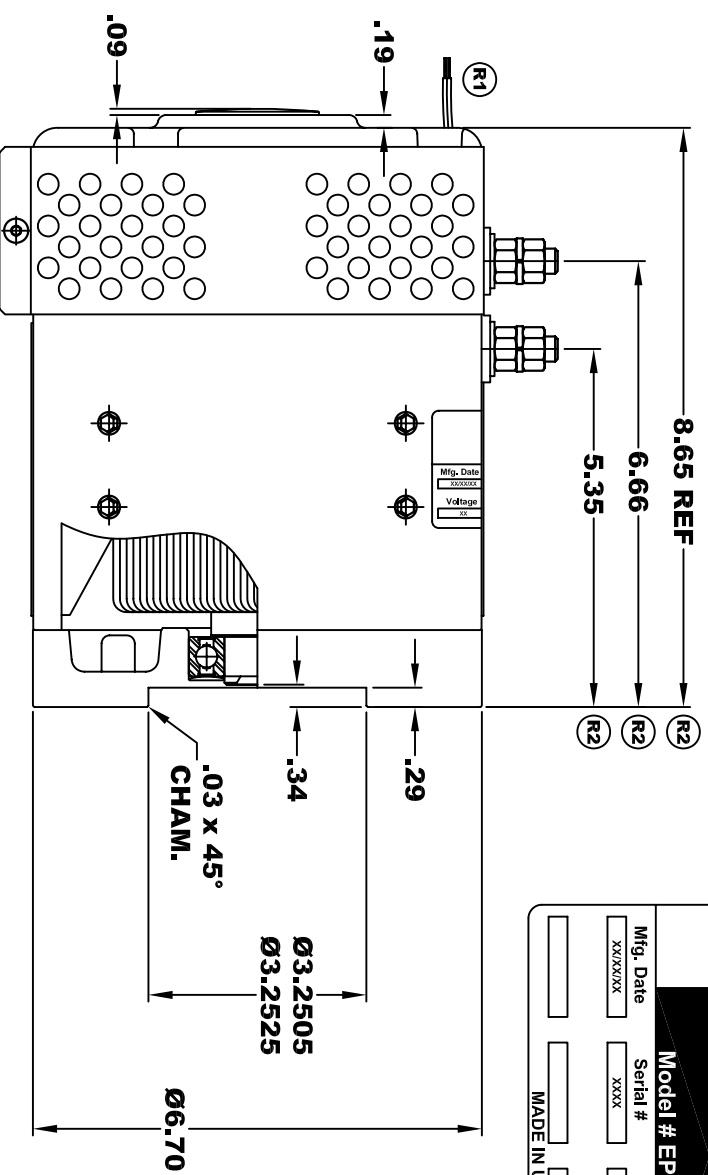


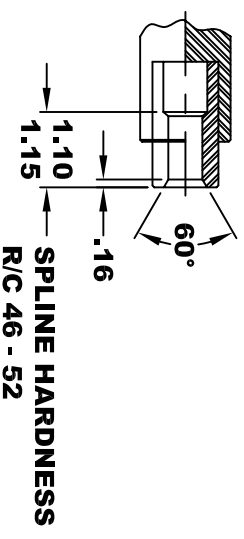
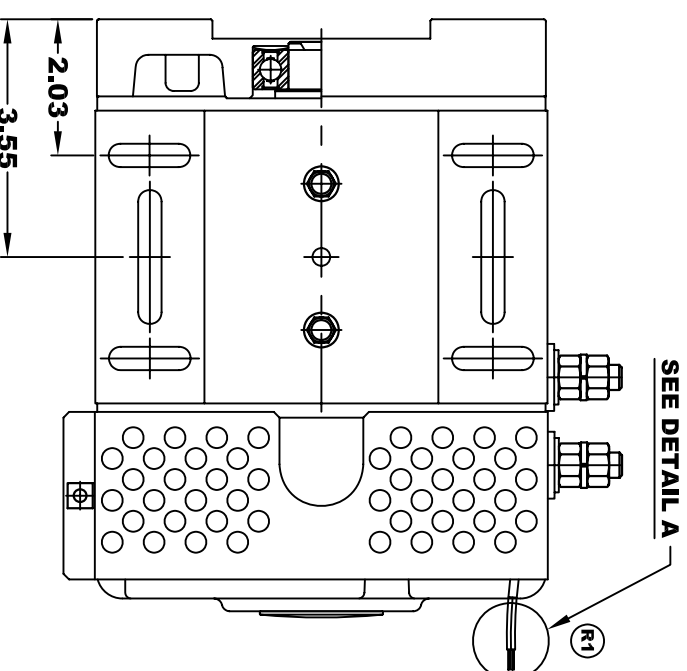
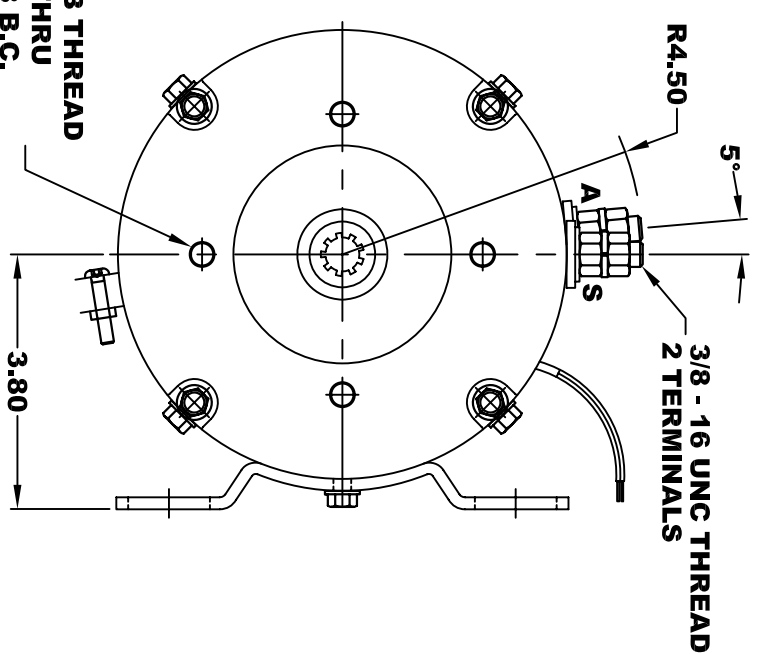
**D&D MOTOR SYSTEMS INC.**  
SYRACUSE N.Y.

**Model # EP-35G-24**

Mfg. Date	Serial #	Rating	Voltage
XX/XX/XX	XXXX	CLASS H	12
MADE IN U.S.A.			



**TORQUE SPECIFICATION FOR  
POWER CABLE SECURING TOP NUTS**  
3/8-16 UNC - 140 IN / LBS MAX

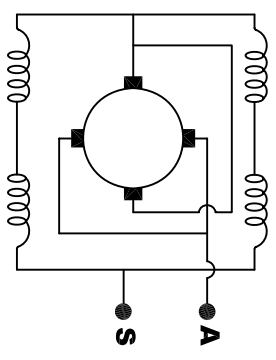


**INTERNAL INVOLUTE SPLINE SPECIFICATION  
FLAT ROOT SIDE FIT (PER A.N.S.I. B92.1 CLASS 5)**

- NO. OF TEETH 9
- SPLINE PITCH 16 / 32
- PRESSURE ANGLE 30°
- BASE Ø .4871 REF
- PITCH Ø .5625 REF
- MAJOR Ø .651
- FORM Ø .629
- MINOR Ø .509 - .514

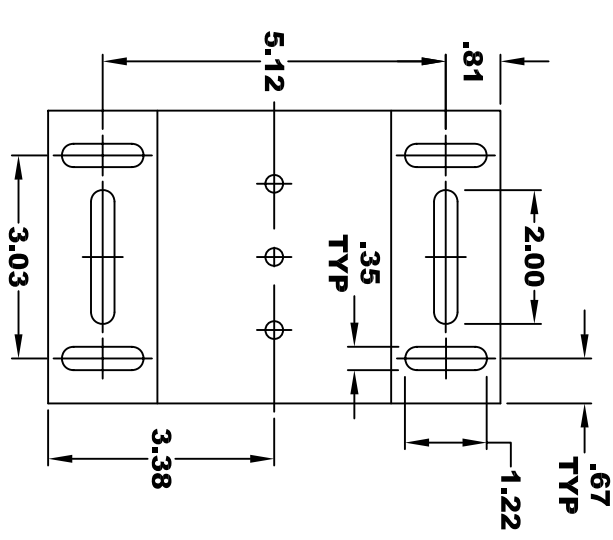
⊙	.010	A
L	.010	B

**ELECTRICAL WIRING DIAGRAM**



**THERMAL PROTECTOR ELECTRICAL SPECIFICATION:**  
MAX. DC OPERATING VOLTAGE: 60 VOLTS  
180° C NORMALLY CLOSED SWITCH

**DETAIL A**



**MOTOR WIRING CONNECTIONS:**  
CW ROTATION DRIVE END  
CONNECT ONE POWER CABLE TO TERMINAL A  
CONNECT THE OTHER POWER CABLE TO TERMINAL S

- CIRCULAR SPACE WIDTH
- MAX ACTUAL .1008
- MIN EFFECTIVE .0982
- MAX DIMENSION BETWEEN TWO PINS .3972
- PIN Ø .1080

**MOTOR WEIGHT: 39 LBS**  
CLASS "H" INSULATION  
PERFORMANCE SPEC: 24

THIS PRINT IS THE PROPERTY OF D&D MOTOR SYSTEMS INC.  
DO NOT SCALE  
WORK TO DIMENSIONS  
TOLERANCES UNLESS OTHERWISE SPECIFIED ARE AS FOLLOWS

.XXX	.005
.XX	.01
.XX RROUGH CASTING	.03
HOLES	-.001 / +.006
ANGLES	0°30"

**D & D MOTOR SYSTEMS INC**  
**MOTOR OUTLINE**

SIZE	DRAWN DATE	RELEASE DATE	DWG NO. / PART NO.	REV
B	4-28-15		ES-35G-24	R2
SCALE	STF	DRAWN BY	MJG	REV DATE
				2-18-16