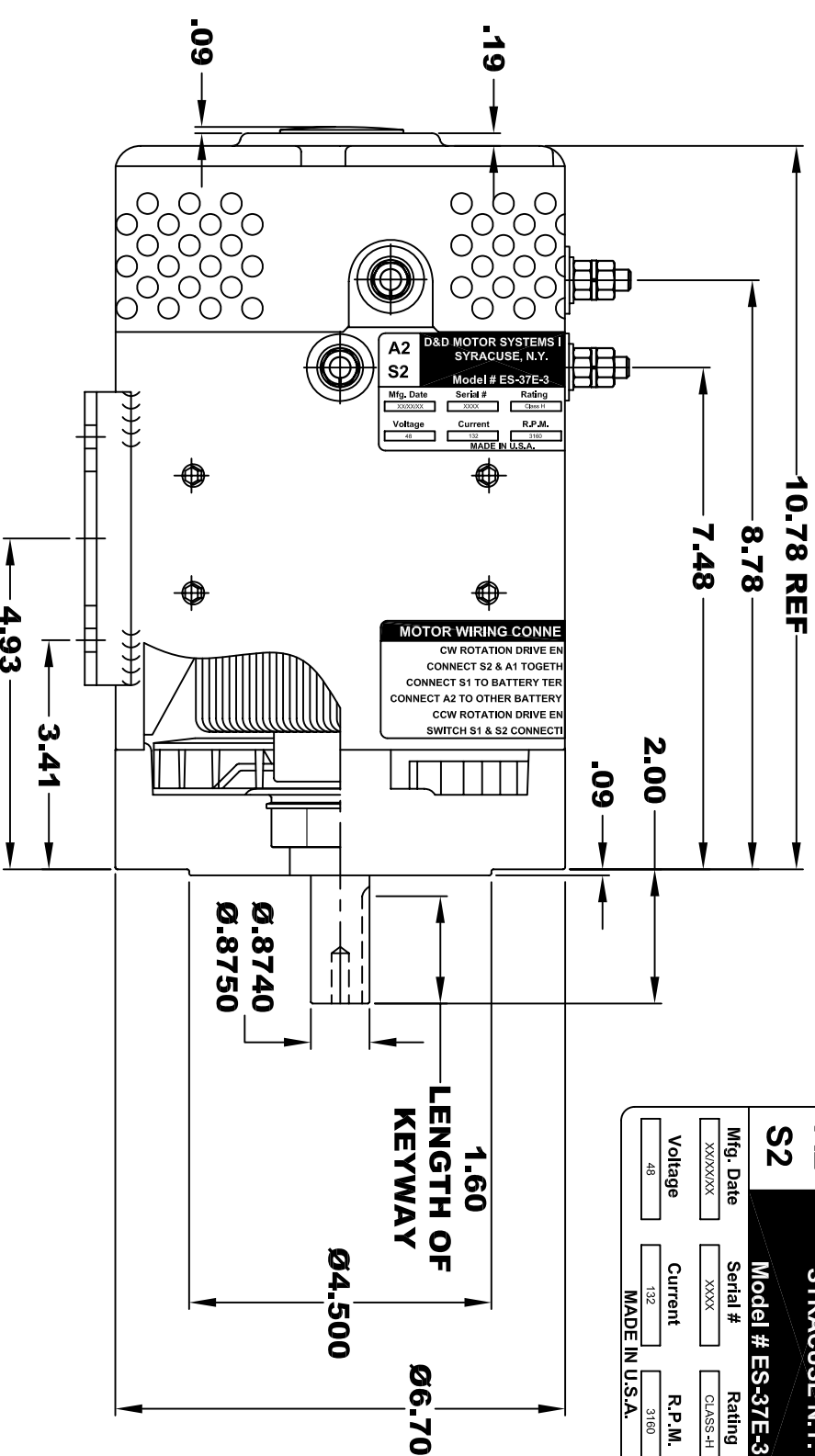
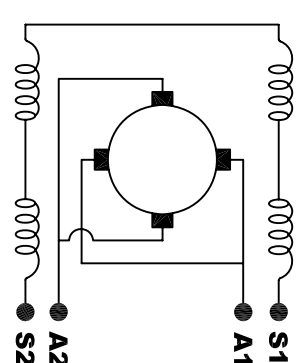
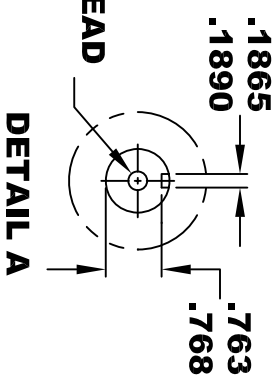
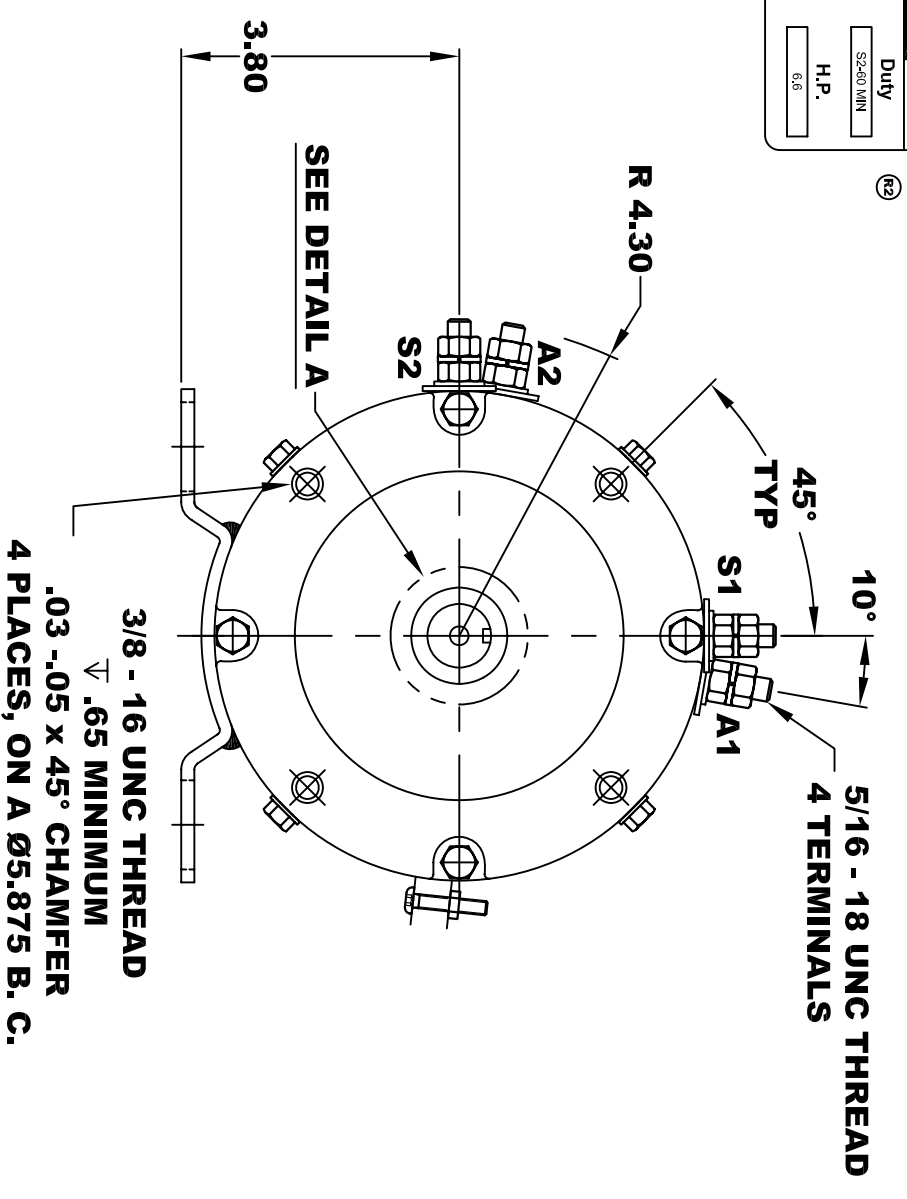


A2		D&D MOTOR SYSTEMS INC.		A1	
S2		SYRACUSE N.Y.		S1	
Model # ES-37E-3					
Mfg. Date	Serial #	Rating	Duty		
XXXXXX	XXX	CLASS-H	S240 MIN		
Voltage	Current	R.P.M.	H.P.		
48	132	3180	6.6		
MADE IN U.S.A.					

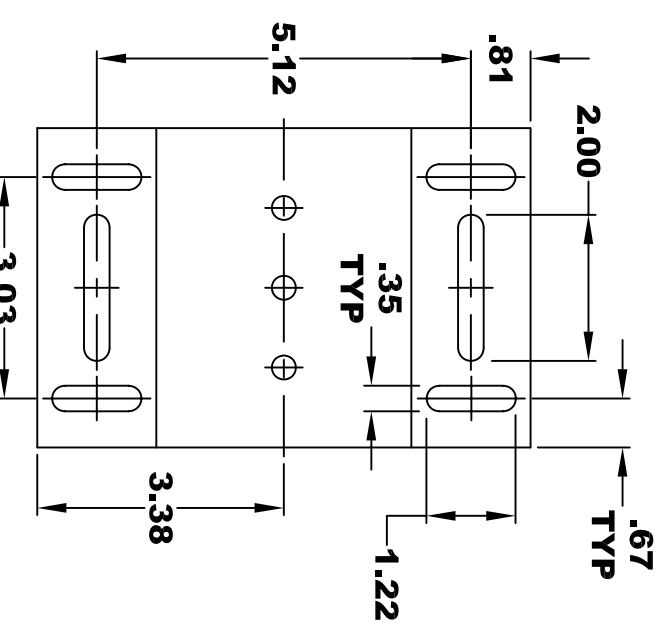


**TORQUE SPECIFICATION FOR
POWER CABLE SECURING TOP NUTS
5/16-18 UNC - 110 IN / LBS MAX**



ELECTRICAL WIRING DIAGRAM

MOTOR WIRING CONNECTIONS:
 Ⓜ MOTOR TO BE OPERATED IN CCWDE ROTATION
CCW ROTATION DRIVE END
 CONNECT S2 & A1 TOGETHER
 CONNECT S1 TO BATTERY TERMINAL
 CONNECT A2 TO OTHER BATTERY TERMINAL
CCW ROTATION DRIVE END
 SWITCH S1 & S2 CONNECTIONS



**MOTOR WEIGHT: 51 LBS
CLASS "H" INSULATION
PERFORMANCE SPEC: 3**

THIS PRINT IS THE PROPERTY OF D&D MOTOR SYSTEMS INC.
 DO NOT SCALE
 WORK TO DIMENSIONS
 TOLERANCES UNLESS OTHERWISE SPECIFIED ARE AS FOLLOWS

.XX	.01
.XXX	.005
.XX ROUGH CASTING	.03
HOLES	-.001 / +.006
ANGLES	0°30"

D & D MOTOR SYSTEMS INC			
MOTOR OUTLINE			
SIZE	DRAWN DATE	RELEASE DATE	DWG NO. / PART NO.
B	10-15-04		ES-37E-3
SCALE	STF	DRAWN BY	REV DATE
		MJG	11-8-04
			REV
			R2