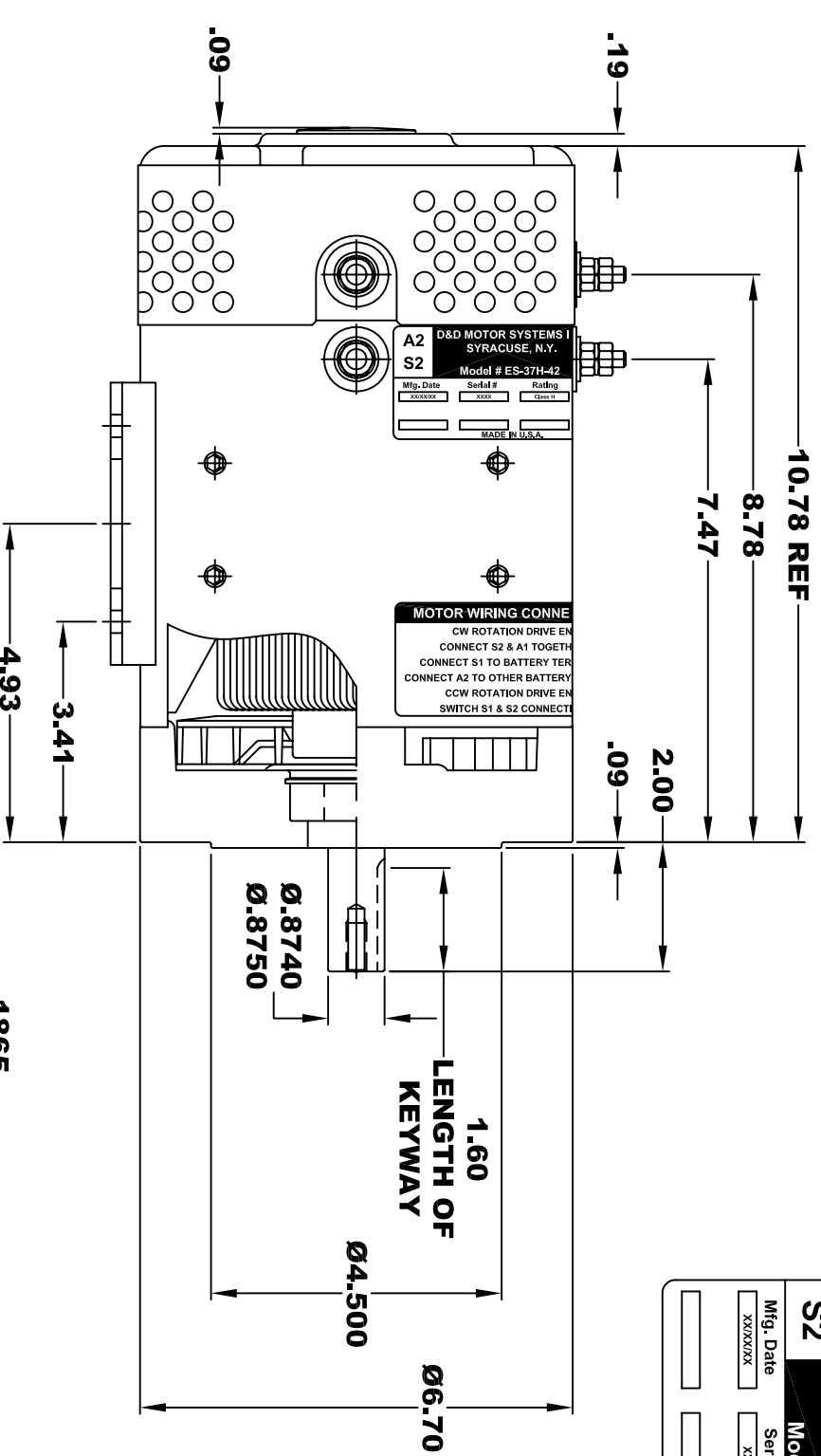
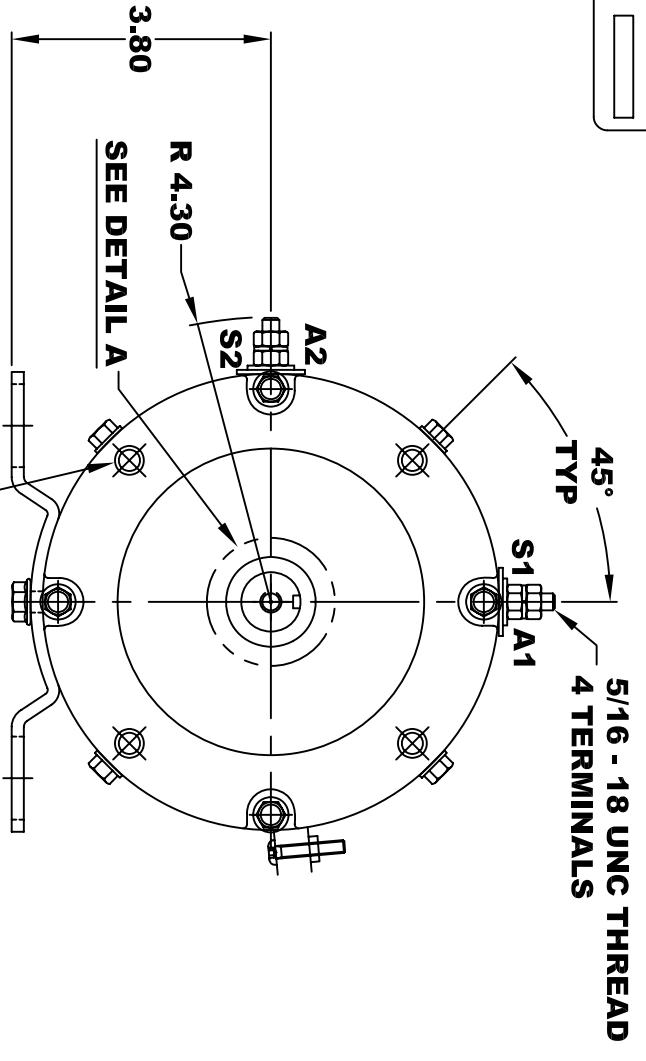


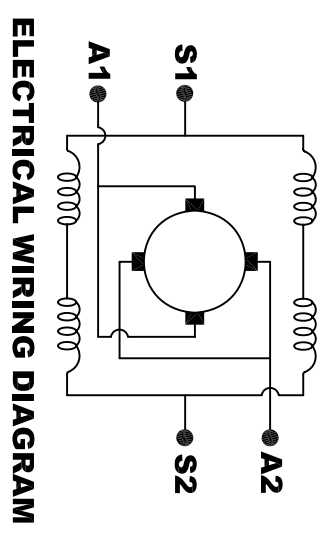
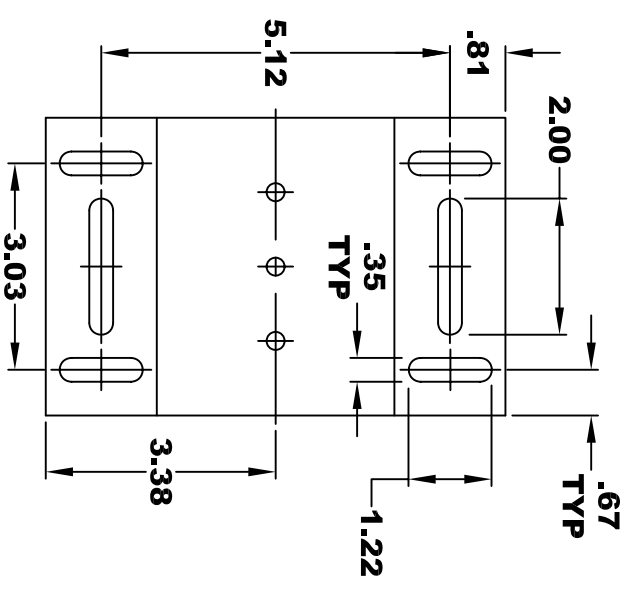
| | | | |
|-----------------------------------|-----------|--------------------------|-----------|
| D&D MOTOR SYSTEMS INC. | | | |
| SYRACUSE N.Y. | | | |
| A2 | S2 | Model # ES-37H-42 | A1 |
| Mfg. Date | Serial # | Rating | Voltage |
| XXXXXX | XXXX | CLASS H | XX |
| MADE IN U.S.A. | | | |



**TORQUE SPECIFICATION FOR
POWER CABLE SECURING TOP NUTS
5/16-18 UNC - 110 IN / LBS MAX**



**5/16 x 18 UNC THREAD
TYP .75
DETAIL A**



ELECTRICAL WIRING DIAGRAM

MOTOR WIRING CONNECTIONS:
CONNECT S2 & A1 TOGETHER
CONNECT S1 TO BATTERY TERMINAL
CONNECT A2 TO OTHER BATTERY TERMINAL
CCW ROTATION DRIVE END
SWITCH S1 & S2 CONNECTIONS

MOTOR WEIGHT: 54 LBS
CLASS "H" INSULATION
PERFORMANCE SPEC: 42

THIS PRINT IS THE PROPERTY OF D&D MOTOR SYSTEMS INC.
 DO NOT SCALE
 WORK TO DIMENSIONS
 TOLERANCES UNLESS OTHERWISE SPECIFIED ARE AS FOLLOWS

.XXX .005
 .XX .01
 .XX ROUGH CASTING .03
 HOLES .001 / +.006
 ANGLES 0°30"

| | | | |
|------------------------------------|------------|--------------|--------------------|
| D & D MOTOR SYSTEMS INC | | | |
| MOTOR OUTLINE | | | |
| SIZE | DRAWN DATE | RELEASE DATE | DWG NO. / PART NO. |
| B | 5-4-15 | | ES-37H-42 |
| SCALE | STF | DRAWN BY | REV DATE |
| | | MJG | 8-3-15 |