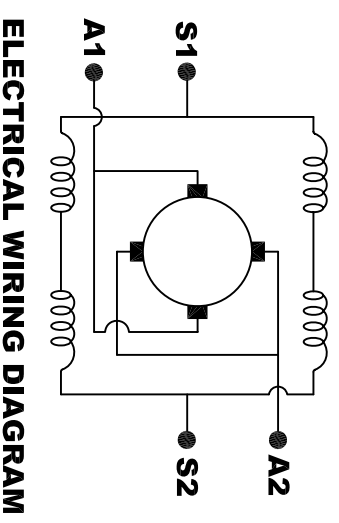
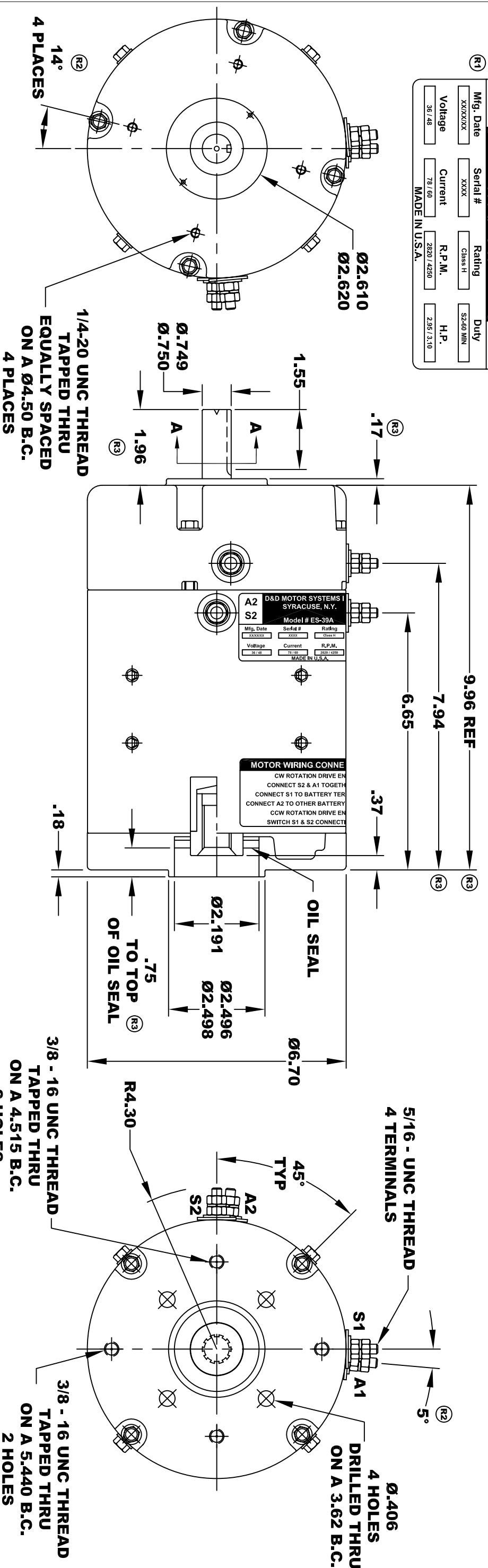


D&D MOTOR SYSTEMS INC.
SYRACUSE N.Y.
Model # ES-39A

A2		A1	
Mfg. Date	Serial #	Rating	Duty
XXXXXX	XXXX	Class H	S2-50 MIN
Voltage	Current	R.P.M.	H.P.
36 / 48	78 / 60	2820 / 4250	2.95 / 3.10
MADE IN U.S.A.			

**TORQUE SPECIFICATION FOR
 POWER CABLE SECURING TOP NUTS**
 5/16-18 UNC - 110 IN / LBS MAX



MOTOR WIRING CONNECTIONS:
 CW ROTATION DRIVE END
 CONNECT S2 & A1 TOGETHER
 CONNECT S1 TO BATTERY TERMINAL
 CCW ROTATION DRIVE END
 SWITCH S1 & S2 CONNECTIONS

MOTOR WEIGHT: 49 LBS
CLASS "H" INSULATION
PERFORMANCE SPEC: 2

SECTION A-A

THIS PRINT IS THE PROPERTY OF D&D MOTOR SYSTEMS INC.
 DO NOT SCALE
 WORK TO DIMENSIONS
 TOLERANCES UNLESS OTHERWISE SPECIFIED ARE AS FOLLOWS
 .XX _____ .01
 .XXX _____ .005
 .XX RROUGH CASTING _____ .03
 HOLES _____ -.001 / +.006
 ANGLES _____ 0°-30°

D & D MOTOR SYSTEMS INC

MOTOR OUTLINE

SIZE	DRAWN DATE	RELEASE DATE	DWG NO. / PART NO.	REV
B	10-30-02		ES-39A	R4
SCALE	STF	DRAWN BY	MJG	REV DATE
				10-20-16