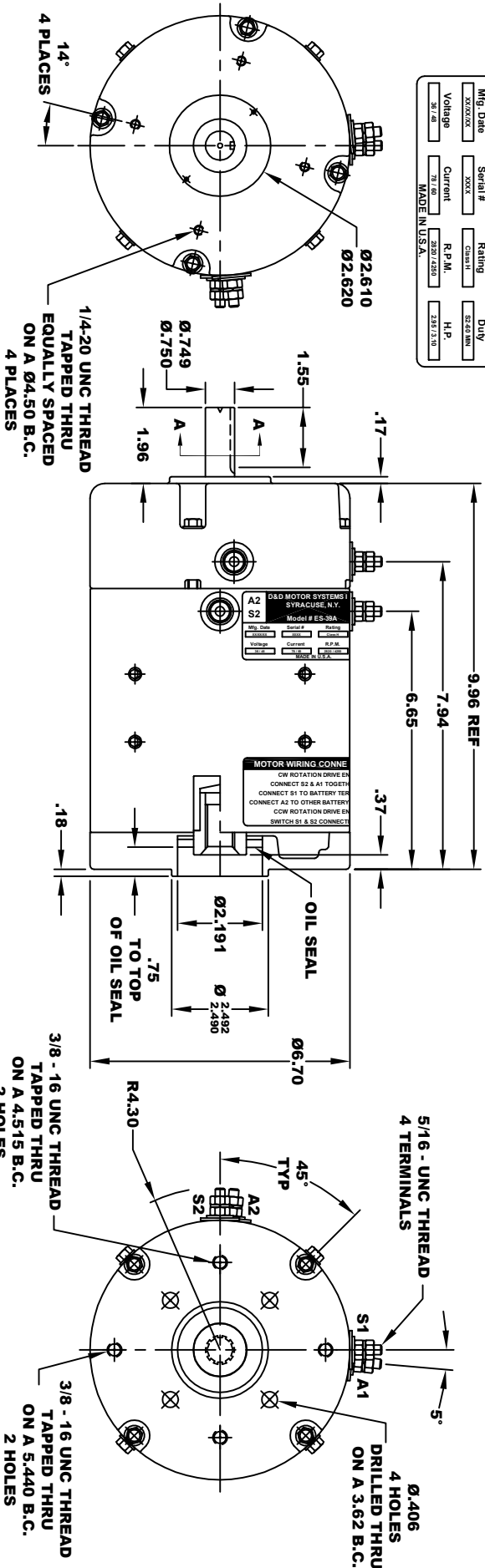
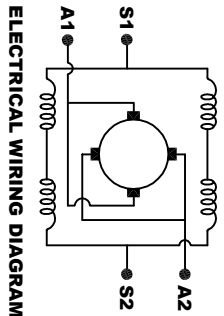
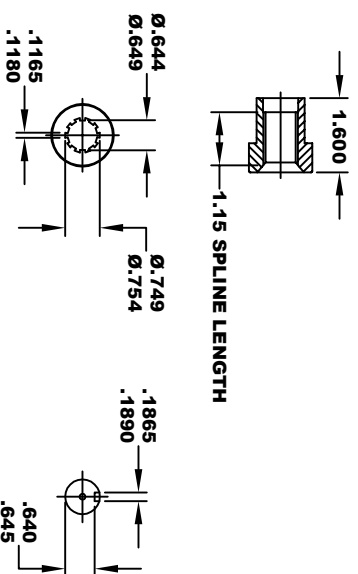


<b>D&amp;D MOTOR SYSTEMS INC.</b>		<b>A1</b>	
<b>S2</b>		<b>S1</b>	
<b>Model # ES-39B</b>			
Mfg. Date	Serial #	Rating	Duty
XXXXXX	XXXX	XXXX	SS20 AM
Voltage	Current	R.P.M.	H.P.
30 / 2.48	75 / 6.0	2820 / 2520	2.82 / 3.10
MADE IN U.S.A.			



**TORQUE SPECIFICATION FOR POWER CABLE SECURING TOP NUTS**  
 5/16-18 UNC - 110 IN / LBS MAX



**MOTOR WIRING CONNECTIONS:**  
 CW ROTATION DRIVE END  
 CONNECT S2 & A1 TOGETHER  
 CONNECT S1 TO BATTERY TERMINAL  
 CCW ROTATION DRIVE END  
 SWITCH S1 & S2 CONNECTIONS

**MOTOR WEIGHT: 49 LBS**  
**CLASS "H" INSULATION**  
**PERFORMANCE SPEC: 2**

THIS PRINT IS THE PROPERTY OF D&D MOTOR SYSTEMS INC.  
 DO NOT SCALE  
 WORK TO DIMENSIONS  
 TOLERANCES UNLESS OTHERWISE SPECIFIED ARE AS FOLLOWS  
 .XX .005  
 .XXX .01  
 .XX ROUNDED CASTING .03  
 HOLES .001 / +.006  
 ANGLES .030"

<b>D &amp; D MOTOR SYSTEMS INC</b>			
<b>MOTOR OUTLINE</b>			
SIZE	DRAWN DATE	RELEASE DATE	DWG NO. / PART NO.
B	10-14-24	ES-39B	
SCALE	DRAWN BY	REV	REV DATE
STF	MJG		