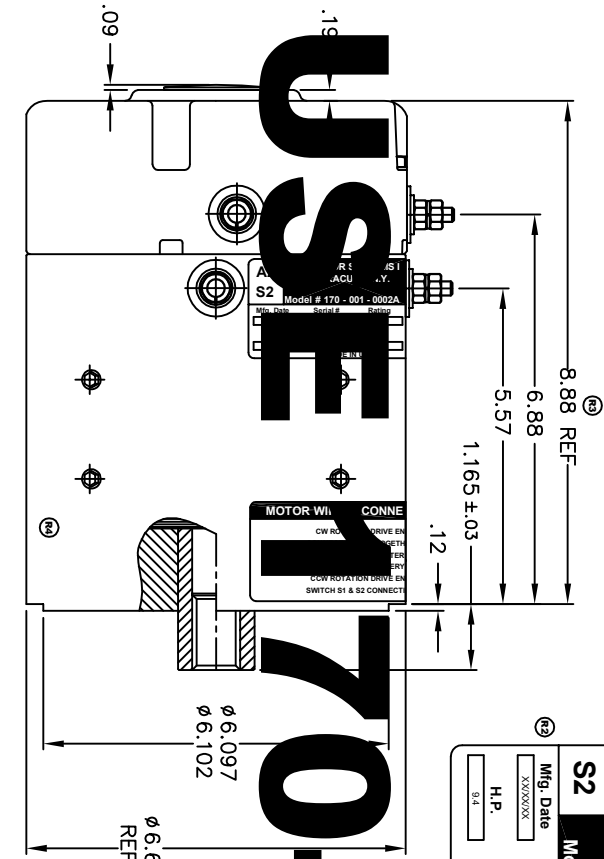
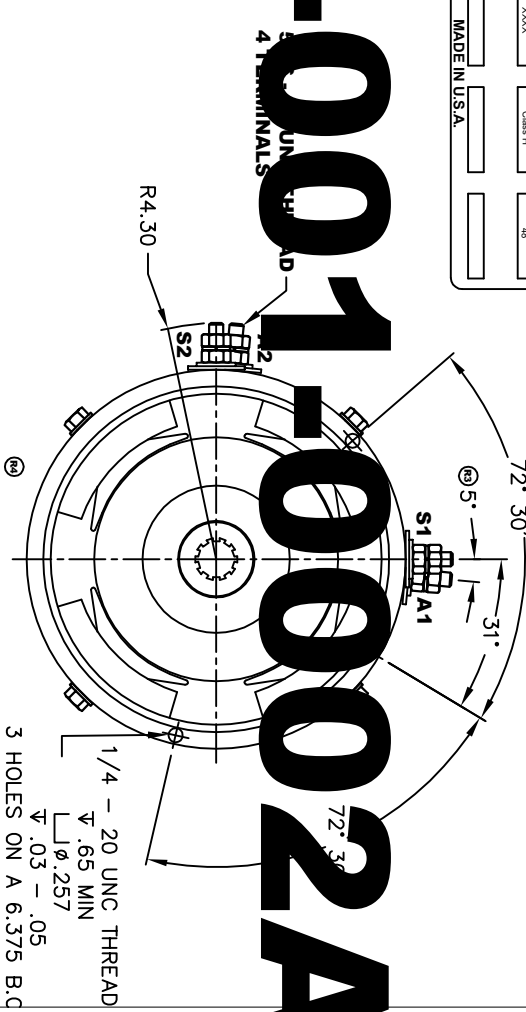


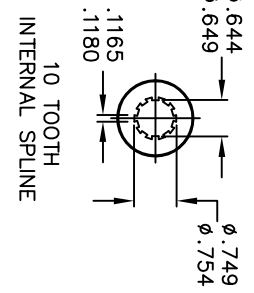
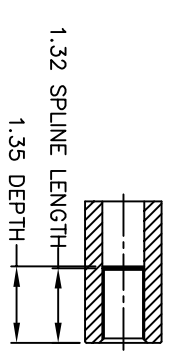
USE 170-001-0002A



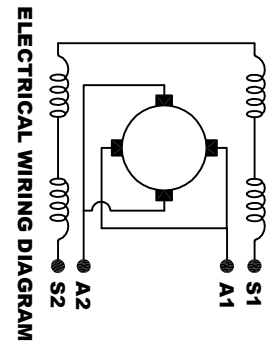
A2	D&D MOTOR SYSTEMS INC.	A1
S2	SYRACUSE, N.Y.	S1
Model # 170 - 001 - 0002A		
Mfg. Date	Serial #	Rating
XXXXXX	XXXX	Class H
H.P.		Voltage
9.4		46
MADE IN U.S.A.		



TORQUE SPECIFICATION FOR
POWER CABLE SECURING TOP NUTS
5/16-18 UNC - 110 IN / LBS MAX



MOTOR WEIGHT 46 LBS
CLASS "H" INSULATION
PERFORMANCE SPEC: 1



MOTOR WIRING CONNECTION S:
CW ROTATION DRIVE END
CONNECT S2 & A1 TOGETHER
CONNECT S1 TO BATTERY TERMINAL
CONNECT A2 TO OTHER BATTERY TERMINAL
CCW ROTATION DRIVE END
SWITCH S1 & S2 CONNECTIONS

THIS PRINT IS THE PROPERTY OF D&D MOTOR SYSTEMS INC.
DO NOT SCALE
WORK TO DIMENSIONS
TOLERANCES UNLESS OTHERWISE SPECIFIED ARE AS FOLLOWS
XX .01
XXX .005
XXX .03
XXX .001 / ± .006
ANGLES -0°30'

D & D MOTOR SYSTEMS INC			
MOTOR OUTLINE			
SIZE	DRAWN DATE	RELEASE DATE	DWG NO. / PART NO.
B	12-12-01	4-9-02	170 - 001 - 0002A
SCALE	STF	DRAWN BY	REV
		MJG	ES-3A
			REV DATE
			5-18-05