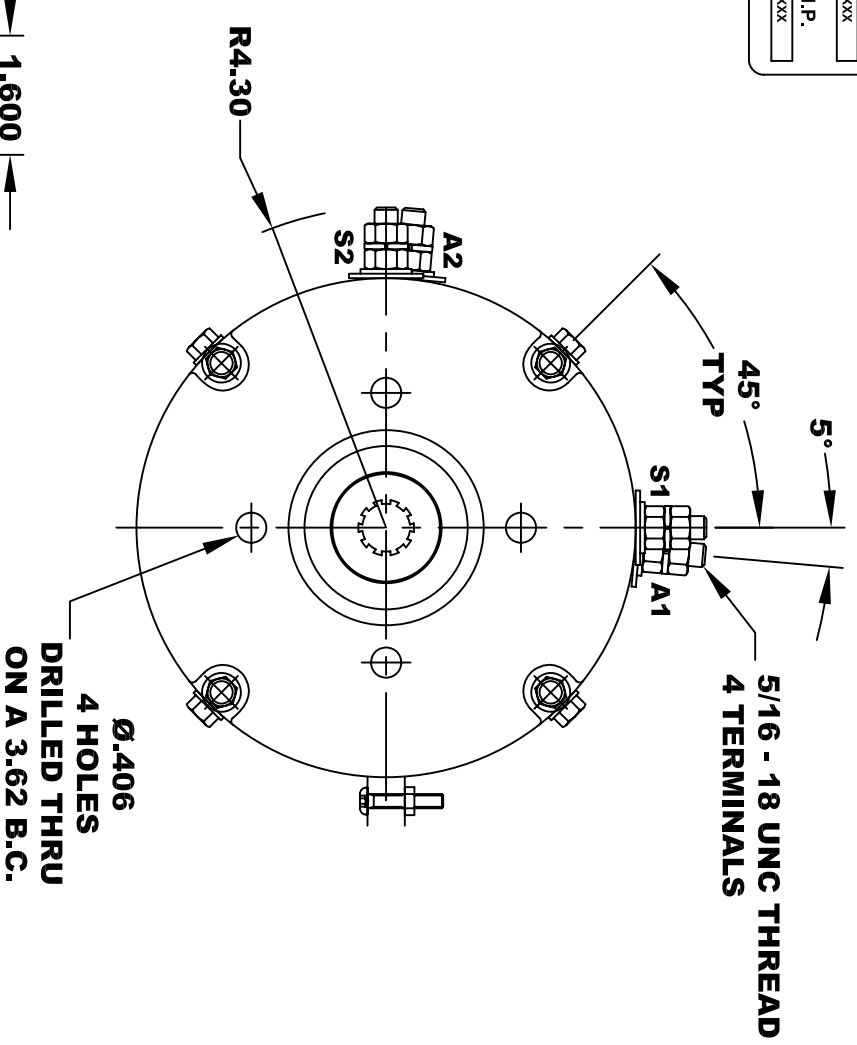
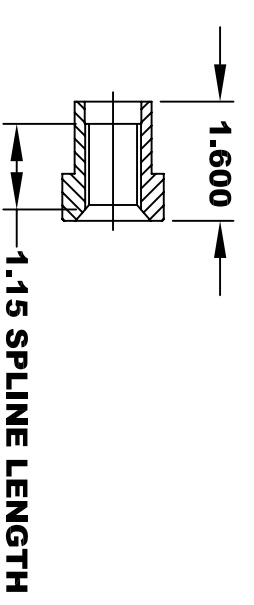
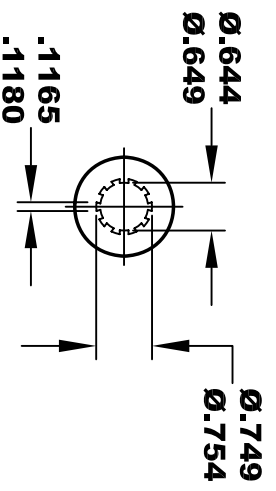
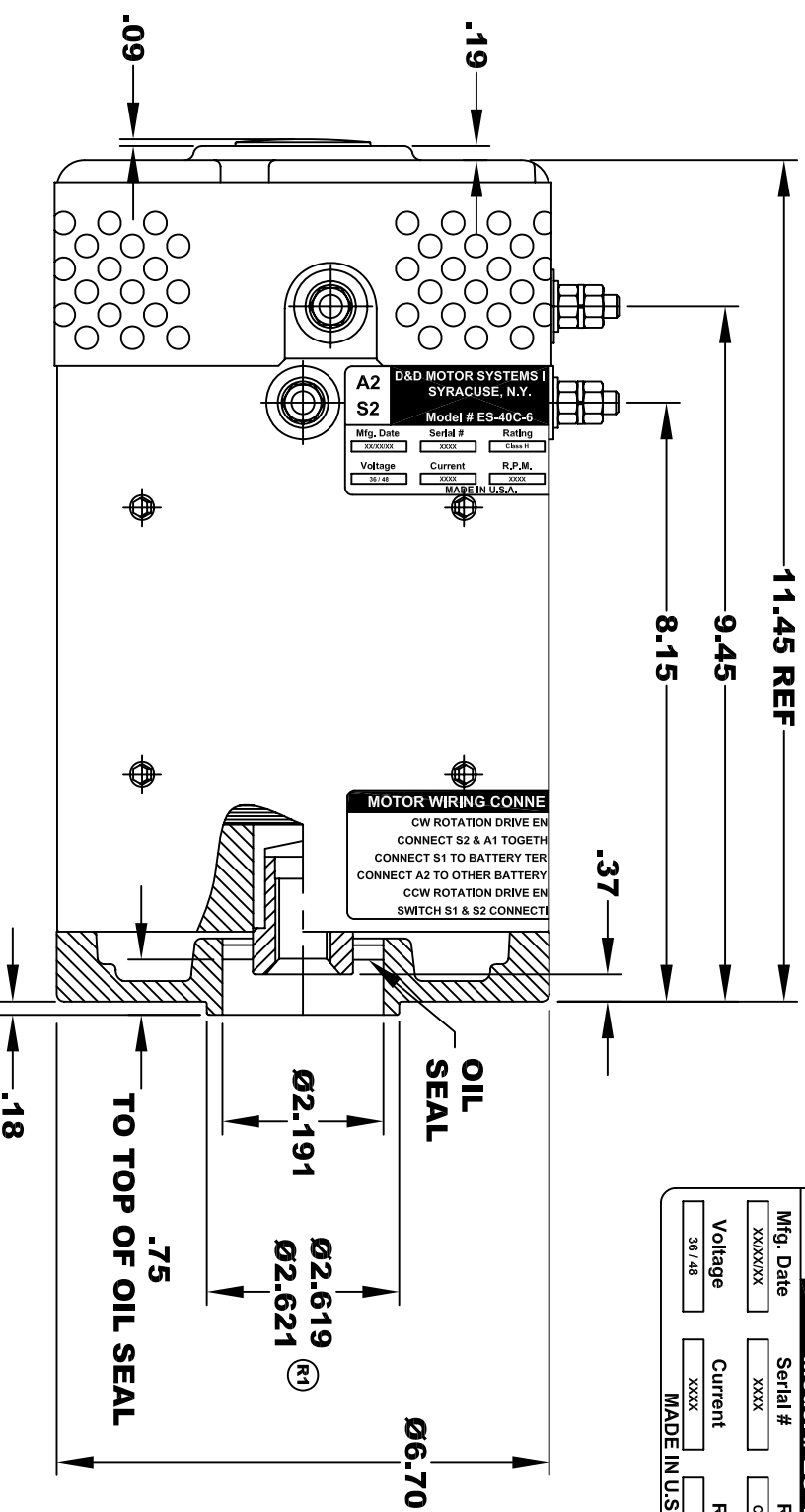


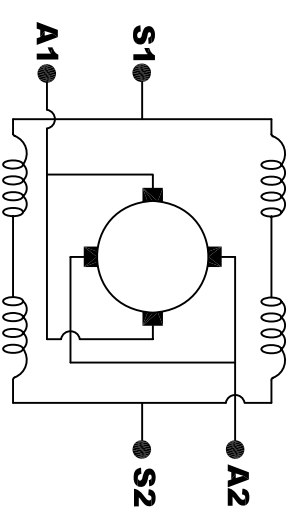
| | | | |
|--|-----------|-----------|-----------|
| D&D MOTOR SYSTEMS INC. SYRACUSE N.Y. | | | |
| A2 | A1 | S2 | S1 |
| Model # ES-40C-6 | | | |
| Mfg. Date | Serial # | Rating | Duty |
| XXXXXX | XXXX | CLASS H | XXXX |
| Voltage | Current | R.P.M. | H.P. |
| 36 / 48 | XXXX | XXXX | XXXX |
| MADE IN U.S.A. | | | |



**TORQUE SPECIFICATION FOR
POWER CABLE SECURING TOP NUTS
5/16-18 UNC - 110 IN / LBS MAX**

**10 TOOTH
INTERNAL SPLINE
HARDNESS OF SPLINE
TO BE R/C 46 - 53 (.02 DEPTH MIN)**

**MOTOR WEIGHT: 61 LBS (R2)
CLASS "H" INSULATION
PERFORMANCE SPEC: 6**



ELECTRICAL WIRING DIAGRAM

MOTOR WIRING CONNECTIONS:
CW ROTATION DRIVE END
CONNECT S2 & A1 TOGETHER
CONNECT S1 TO BATTERY TERMINAL
CONNECT A2 TO OTHER BATTERY TERMINAL
CCW ROTATION DRIVE END
SWITCH S1 & S2 CONNECTIONS

THIS PRINT IS THE PROPERTY OF D&D MOTOR SYSTEMS INC.
 DO NOT SCALE
 WORK TO DIMENSIONS
 TOLERANCES UNLESS OTHERWISE SPECIFIED ARE AS FOLLOWS
 .XX _____ .01
 .XXX _____ .005
 .XX ROUGH CASTING _____ .03
 HOLES _____ -.001 / +.006
 ANGLES _____ 0°30"

| | | | |
|------------------------------------|------------|--------------|--------------------|
| D & D MOTOR SYSTEMS INC | | | |
| MOTOR OUTLINE | | | |
| SIZE | DRAWN DATE | RELEASE DATE | DWG NO. / PART NO. |
| B | 2-20-06 | | ES-40C-6 |
| SCALE | STF | DRAWN BY | MJG |
| | | | REV DATE |
| | | | 9-9-15 |