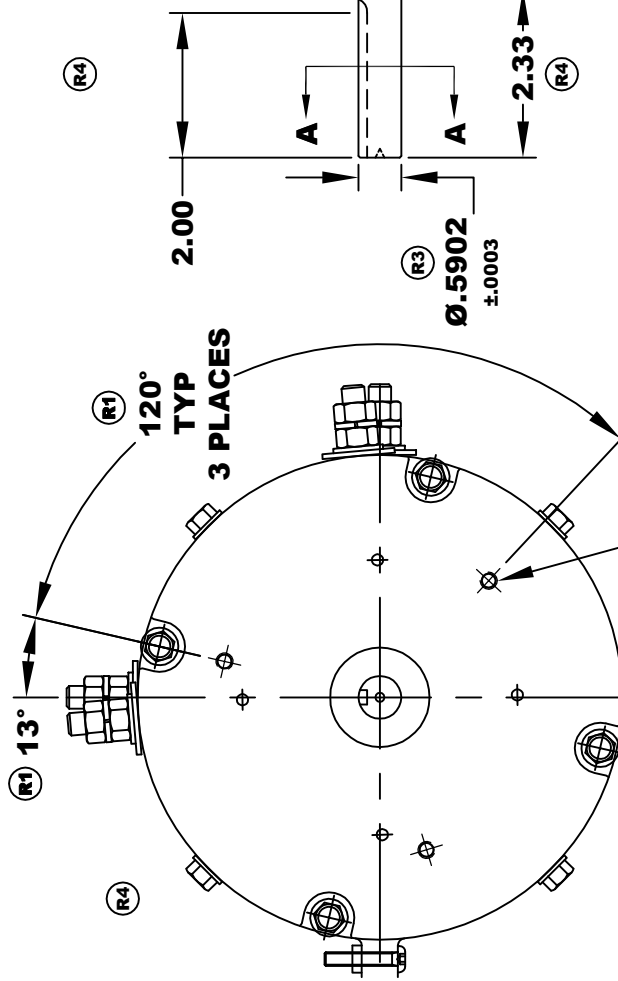
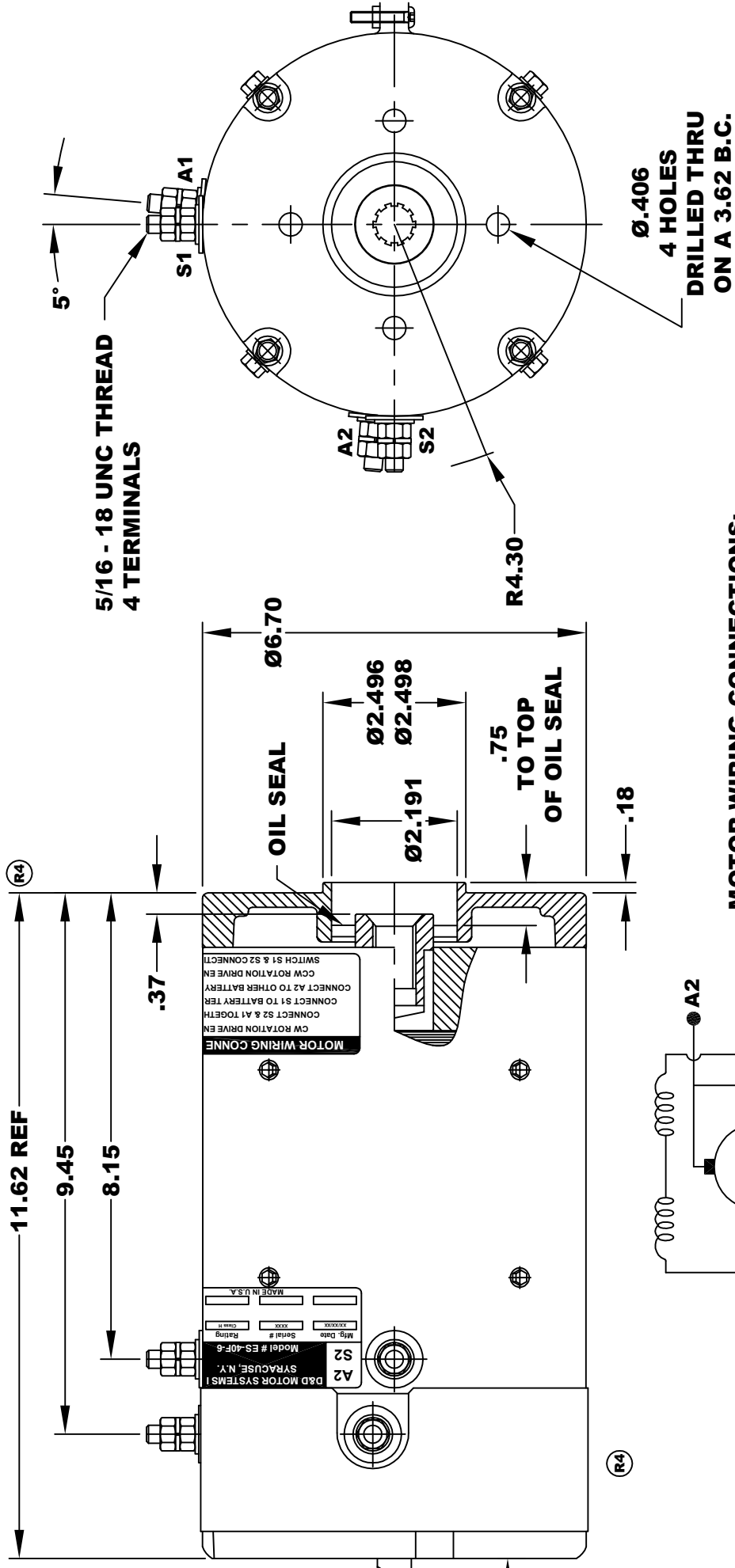
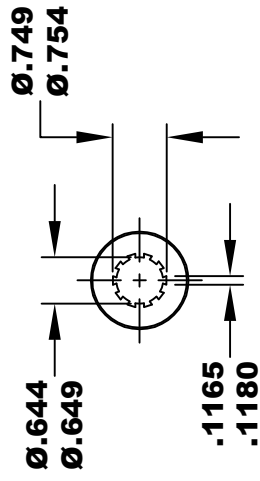
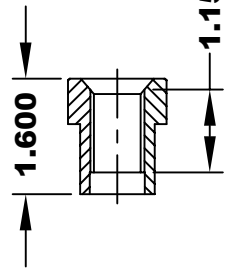


<b>D&amp;D MOTOR SYSTEMS INC.</b> SYRACUSE N.Y.		<b>A1</b>	<b>S1</b>
<b>A2</b>	<b>S2</b>	Model # ES-40F-6	
Mfg. Date	Serial #	Rating	Voltage
XXXX/XX	XXXX	CLASS-H	36 / 48
MADE IN U.S.A.			

**TORQUE SPECIFICATION FOR  
POWER CABLE SECURING TOP NUTS  
5/16-18 UNC - 110 IN / LBS MAX**



M 6 x 1.0 THREAD  
TAPPED THRU  
EQUALLY SPACED  
ON A Ø4.41 B.C.  
3 PLACES

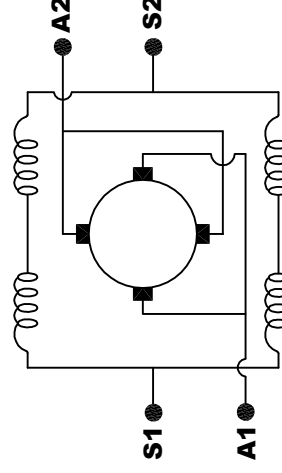


10 TOOTH

INTERNAL SPLINE  
HARDNESS OF SPLINE

TO BE R/C 46 - 53 (.02 DEPTH MIN)

**MOTOR WIRING CONNECTIONS:**  
CW ROTATION DRIVE END  
CONNECT S2 & A1 TOGETHER  
CONNECT S1 TO BATTERY TERMINAL  
CCW ROTATION DRIVE END  
CONNECT A2 TO OTHER BATTERY TERMINAL  
SWITCH S1 & S2 CONNECTIONS



**ELECTRICAL WIRING DIAGRAM**

**MOTOR WEIGHT: 61 LBS  
CLASS "H" INSULATION  
PERFORMANCE SPEC: 6**

THIS PRINT IS THE PROPERTY OF D&D MOTOR SYSTEMS INC.

DO NOT SCALE

WORK TO DIMENSIONS

TOLERANCES UNLESS OTHERWISE SPECIFIED ARE AS FOLLOWS

.XX \_\_\_\_\_ .01

.XXX \_\_\_\_\_ .005

.XX ROUGH CASTING \_\_\_\_\_ .03

HOLES \_\_\_\_\_ .001 / +.006

ANGLES \_\_\_\_\_ 0°30"

**D & D MOTOR SYSTEMS INC**

**MOTOR OUTLINE**

SIZE	DRAWN DATE	RELEASE DATE	DWG NO. / PART NO.	REV
B	11-8-16		ES-40F-6	R4
SCALE	STF	DRAWN BY	MJG	REV DATE
				1-30-17