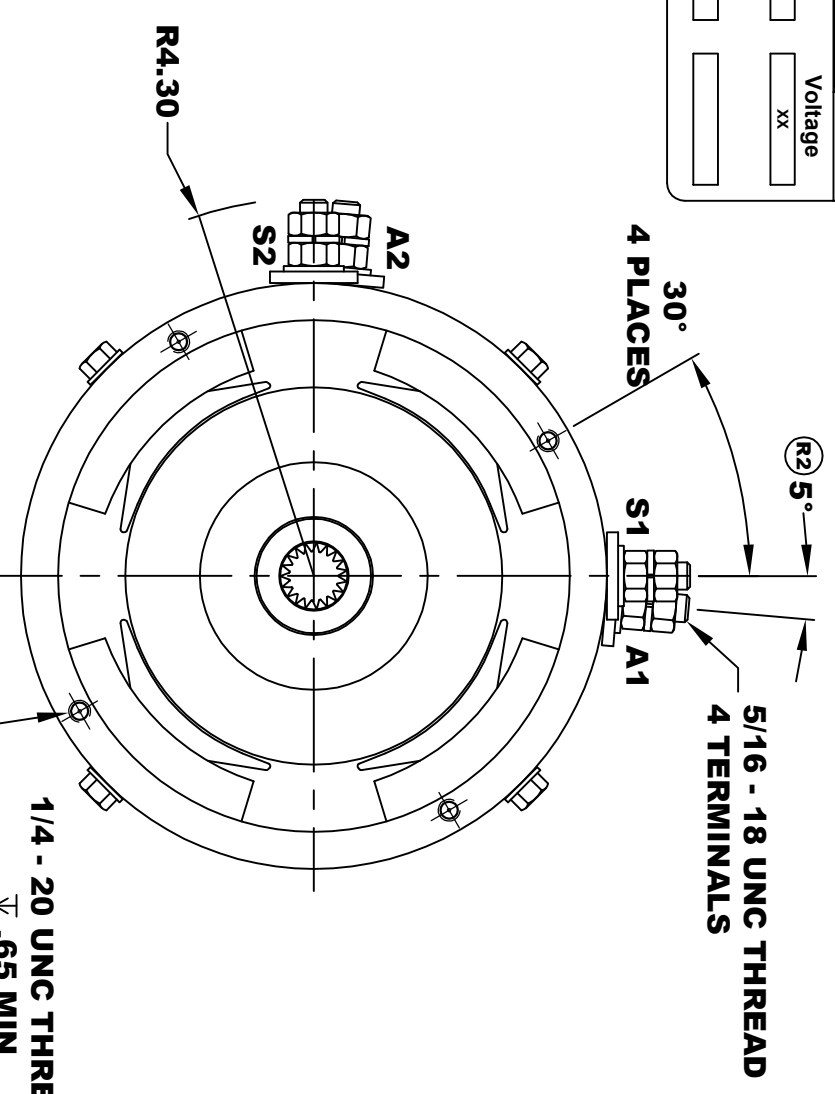
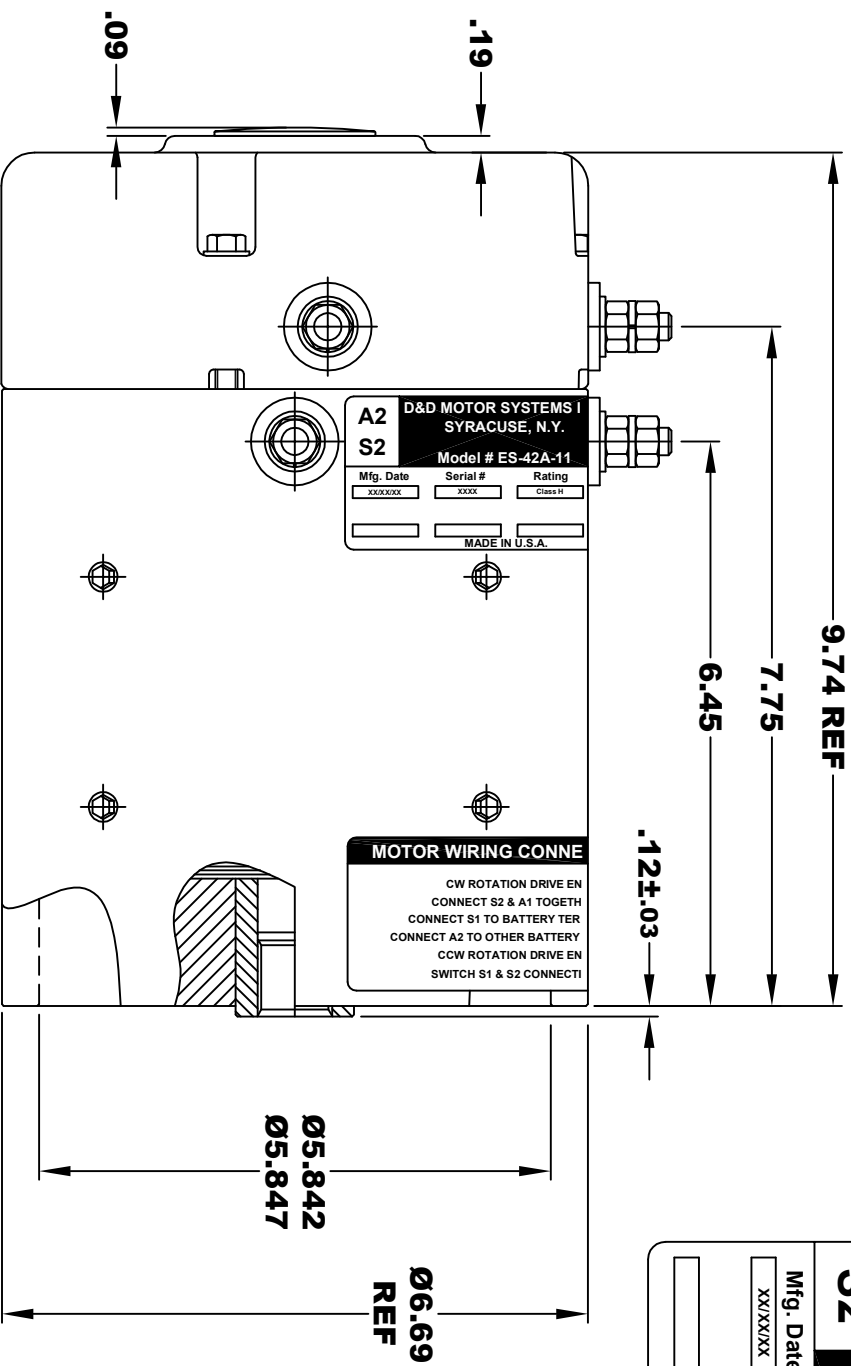


A2
S2

A1
S1

D&D MOTOR SYSTEMS INC.
SYRACUSE N.Y.
Model # ES-42A-11

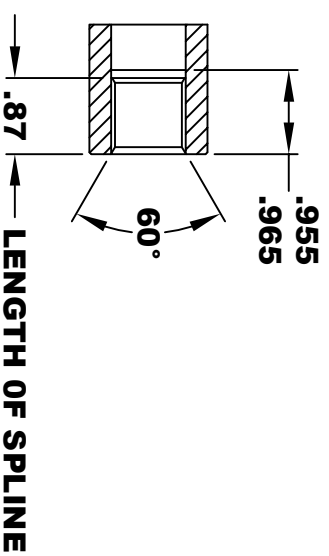
Mfg. Date	Serial #	Rating	Voltage
XX/XX/XX	XXXX	Class H	XX
MADE IN U.S.A.			



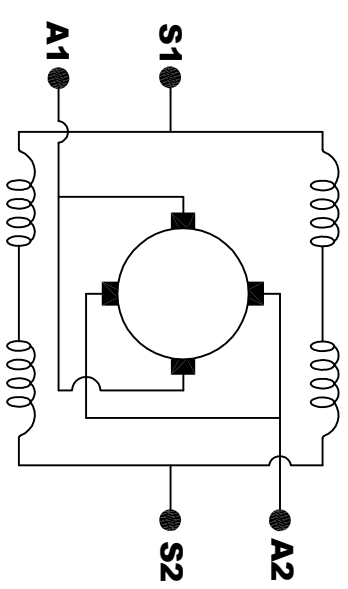
**TORQUE SPECIFICATION FOR
POWER CABLE SECURING TOP NUTS**
5/16-18 UNC - 110 IN / LBS MAX

**INTERNAL INVOLUTE SPLINE SPECIFICATION
CLASS 5 FILLET ROOT SIDE FIT (PER A.N.S.I. B92.1)**

- NO. OF TEETH _____ 19
- SPLINE PITCH _____ 24 / 48
- PRESSURE ANGLE _____ 45°
- BASE Ø _____ .5597 REF
- PITCH Ø _____ .7916 REF
- MAJOR Ø _____ .850 - .859
- FORM Ø _____ .835
- MINOR Ø _____ .767 - .772
- CIRCULAR SPACE WIDTH _____ .0764
- EFFECTIVE SPACE WIDTH _____ .0738
- MAX. DIMENSION BETWEEN TWO PINS _____ .6714
- PIN Ø _____ .0800
- SPLINE HARDNESS TO BE R/C 26-34



MOTOR WEIGHT 53 LBS
CLASS "H" INSULATION
PERFORMANCE SPEC: 11



ELECTRICAL WIRING DIAGRAM

MOTOR WIRING CONNECTIONS:

- CW ROTATION DRIVE END**
- CONNECT S2 & A1 TOGETHER**
- CONNECT S1 TO BATTERY TERMINAL**
- CONNECT A2 TO OTHER BATTERY TERMINAL**
- CCW ROTATION DRIVE END**
- SWITCH S1 & S2 CONNECTIONS**

D & D MOTOR SYSTEMS INC

MOTOR OUTLINE

THIS PRINT IS THE PROPERTY OF D&D MOTOR SYSTEMS INC.
DO NOT SCALE
WORK TO DIMENSIONS
TOLERANCES UNLESS OTHERWISE SPECIFIED ARE AS FOLLOWS

XXX	.005
.XX	.01
.XX	.03
HOLES	.001 / +.006
ANGLES	0.30"

SIZE	DRAWN DATE	RELEASE DATE	DWG NO. / PART NO.	REV
B	5-20-04		ES-42A-11	R2
SCALE	STF	DRAWN BY	MJG	REV DATE
				5-16-19