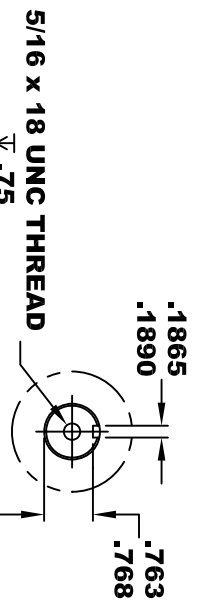
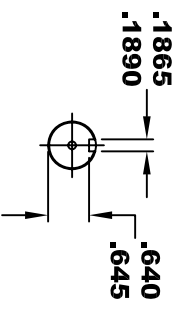
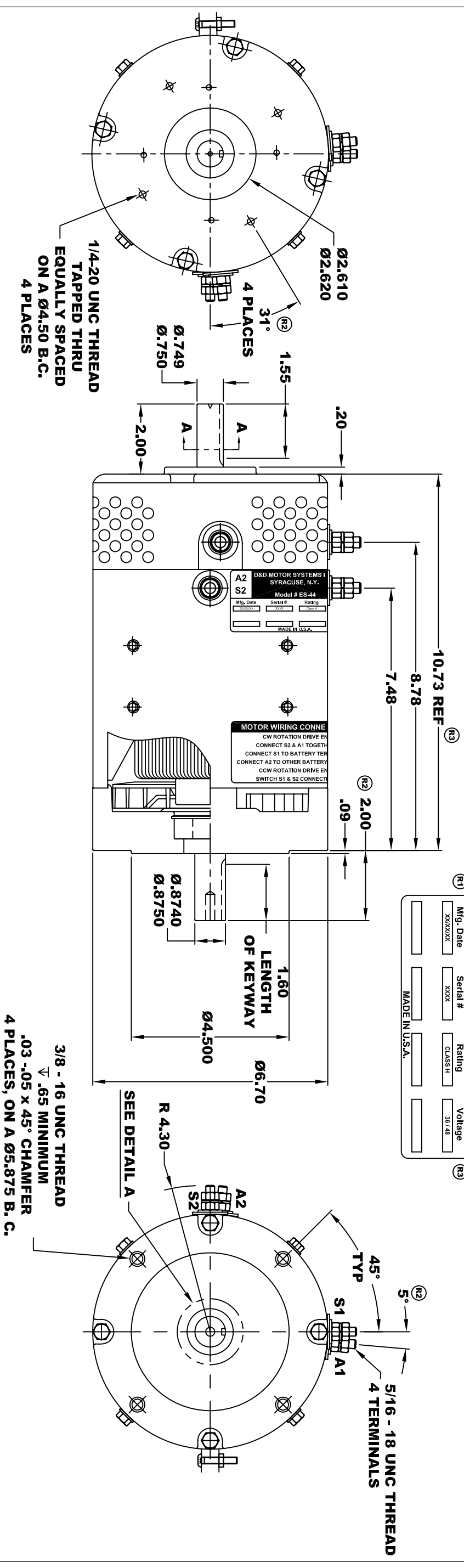


**TORQUE SPECIFICATION FOR  
POWER CABLE SECURING TOP NUTS  
5/16-18 UNC - 110 IN / LBS MAX**

<b>D&amp;D MOTOR SYSTEMS INC.</b>		<b>A1</b>
SYRACUSE N.Y.		<b>S1</b>
<b>Model # ES-44</b>		
Mfg. Date	Serial #	Rating
XXXXXX	XXXX	CLASS H
MADE IN U.S.A.		Voltage
		36 / 48



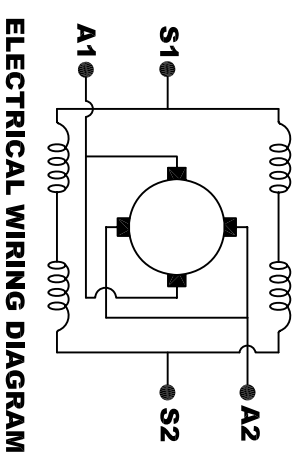
**MOTOR WEIGHT: 51 LBS**  
**CLASS "H" INSULATION**  
**PERFORMANCE SPEC: 2**

**D & D MOTOR SYSTEMS INC**

**MOTOR OUTLINE**

THIS PRINT IS THE PROPERTY OF D&D MOTOR SYSTEMS INC.  
DO NOT SCALE  
WORK TO DIMENSIONS  
TOLERANCES UNLESS OTHERWISE SPECIFIED ARE AS FOLLOWS  
.XXX \_\_\_\_\_ .005  
.XX \_\_\_\_\_ .01  
.XX ROUGH CASTING \_\_\_\_\_ .03  
HOLES \_\_\_\_\_ -.001 / +.006  
ANGLES \_\_\_\_\_ 0°30"

SIZE	DRAWN DATE	RELEASE DATE	DWG NO. / PART NO.	REV
B	11-7-02		ES-44	R3
SCALE	STF	DRAWN BY	MJG	REV DATE
				4-26-05



**MOTOR WIRING CONNECTIONS:**  
**CW ROTATION DRIVE END**  
**CONNECT S2 & A1 TOGETHER**  
**CONNECT S1 TO BATTERY TERMINAL**  
**CCW ROTATION DRIVE END**  
**CONNECT A2 TO OTHER BATTERY TERMINAL**  
**CONNECT S1 & S2 CONNECTIONS**

**ELECTRICAL WIRING DIAGRAM**