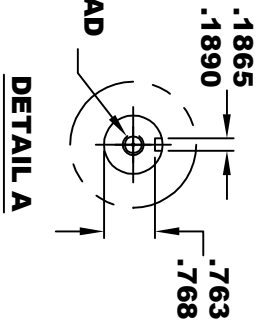
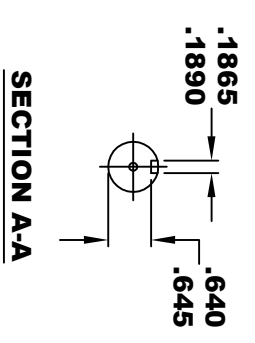
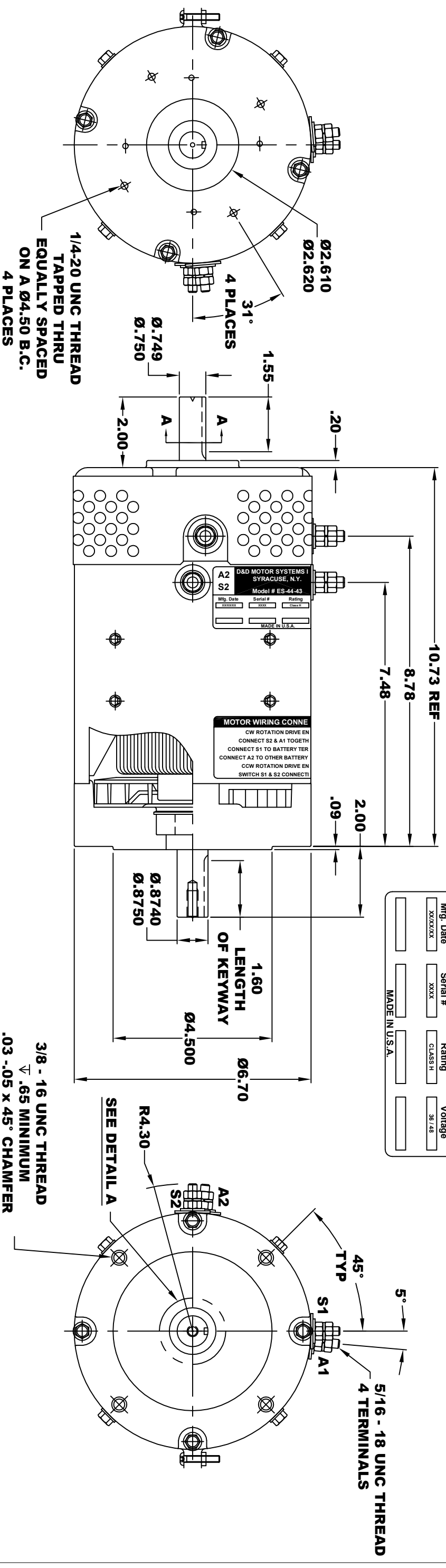


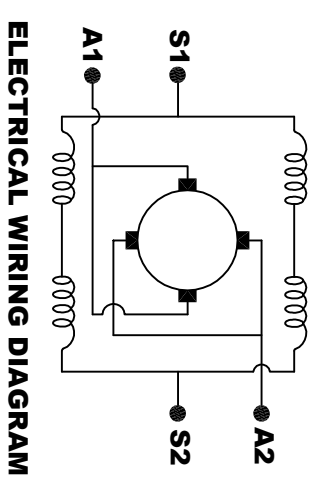
D&D MOTOR SYSTEMS INC.			
SYRACUSE N.Y.			
A2	Model # ES-44-43	A1	S1
S2	Mfg. Date	Serial #	Rating
	XXXXXX	XXXX	CLASS H
			36 / 48
			Voltage
			MADE IN U.S.A.

**TORQUE SPECIFICATION FOR
POWER CABLE SECURING TOP NUTS
5/16-18 UNC - 110 IN / LBS MAX**



**3/8 - 16 UNC THREAD
TYPICAL .65 MINIMUM
.03-.05 x 45° CHAMFER
4 PLACES, ON A Ø5.875 B. C.**

**MOTOR WEIGHT: 51 LBS
CLASS "H" INSULATION
PERFORMANCE SPEC: 43**



**MOTOR WIRING CONNECTIONS:
CW ROTATION DRIVE END
CONNECT S2 & A1 TOGETHER
CONNECT S1 TO BATTERY TERMINAL
CCW ROTATION DRIVE END
CONNECT A2 TO OTHER BATTERY TERMINAL
CONNECT S1 & S2 TO OTHER BATTERY TERMINAL**

D & D MOTOR SYSTEMS INC

MOTOR OUTLINE

THIS PRINT IS THE PROPERTY OF D&D MOTOR SYSTEMS INC.
DO NOT SCALE
WORK TO DIMENSIONS
TOLERANCES UNLESS OTHERWISE SPECIFIED ARE AS FOLLOWS
XX .01
XXX .005
XX RROUGH CASTING .03
HOLES .001 / +.006
ANGLES 0.30"

SIZE	DRAWN DATE	RELEASE DATE	DWG NO. / PART NO.	REV
B	3-25-19		ES-44-43	
SCALE	STF	DRAWN BY	MJG	REV DATE