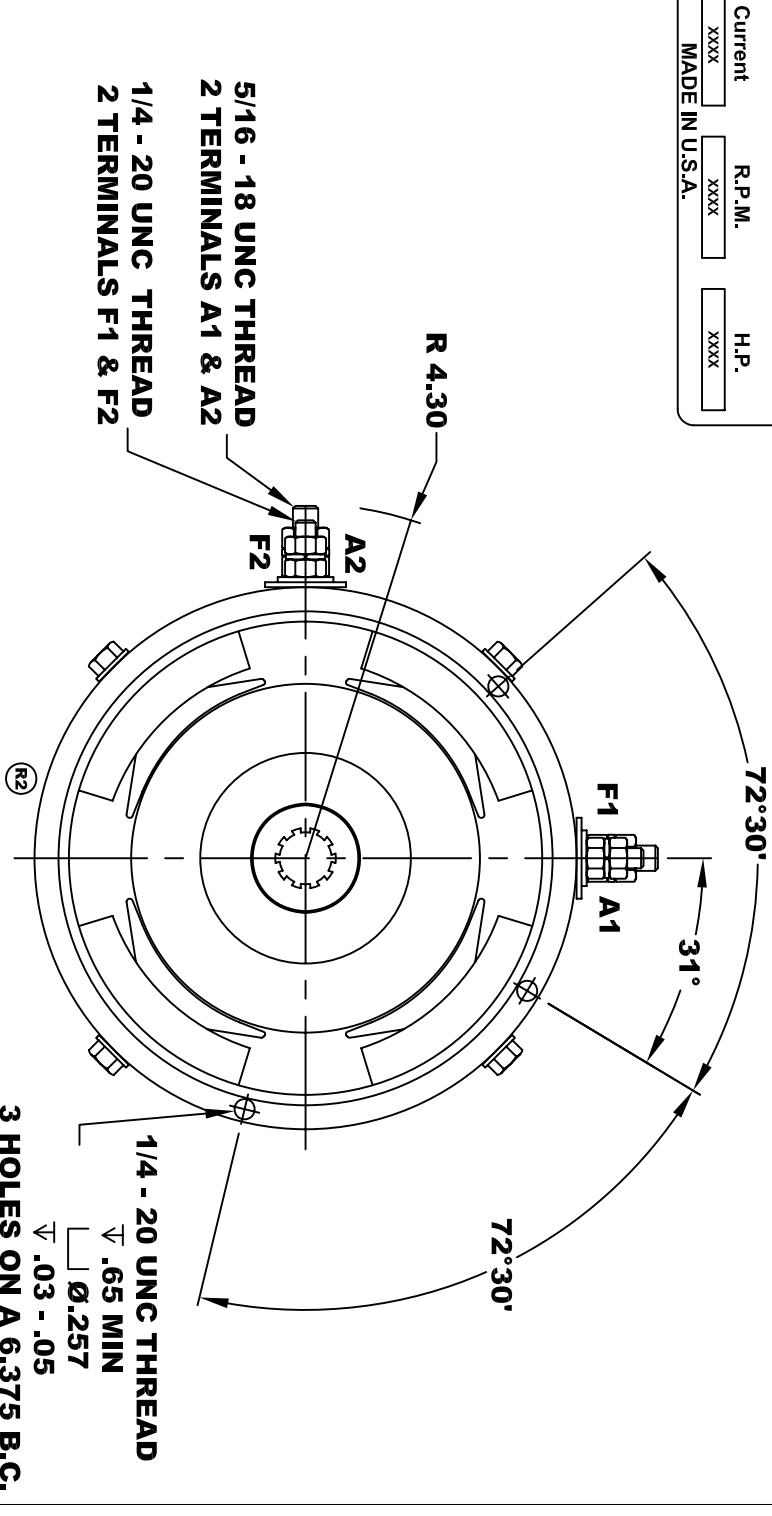
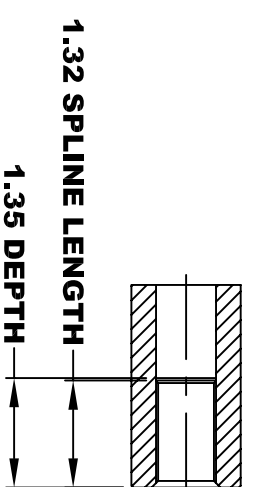
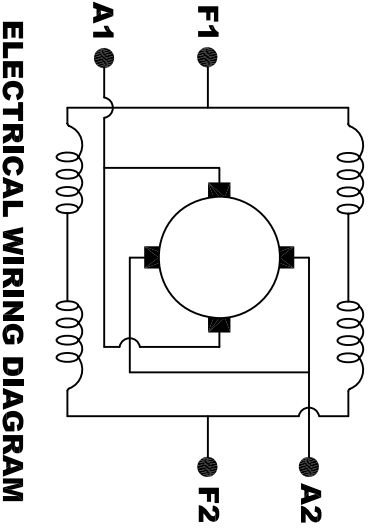


<b>D&amp;D MOTOR SYSTEMS INC.</b>		<b>A1</b>	
<b>SYRACUSE N.Y.</b>		<b>F1</b>	
<b>Model # ES-50</b>			
Mfg. Date	Serial #	Rating	Duty
XX/XX/XX	XXXX	Class H	S2-60 MIN
Voltage	Current	R.P.M.	H.P.
XXXX	XXXX	XXXX	XXXX
MADE IN U.S.A.			



**TORQUE SPECIFICATION FOR  
POWER CABLE SECURING TOP NUTS**  
5/16-18 UNC (A1 / A2) - 110 IN / LBS MAX  
1/4-20 UNC (F1 / F2) - 50 IN / LBS MAX

**MOTOR WEIGHT 46 LBS**  
**CLASS "H" INSULATION**  
**PERFORMANCE SPEC: 23**



**ELECTRICAL WIRING DIAGRAM**

**MOTOR WIRING CONNECTIONS:**  
**CW ROTATION DRIVE END**  
**CONNECT A1 & F1 TO ONE BATTERY TERMINAL**  
**CCW ROTATION DRIVE END**  
**CONNECT A2 & F2 TO OTHER BATTERY TERMINAL**  
**SWITCH F1 & F2 CONNECTIONS**

THIS PRINT IS THE PROPERTY OF D&D MOTOR SYSTEMS INC.  
DO NOT SCALE  
WORK TO DIMENSIONS  
TOLERANCES UNLESS OTHERWISE SPECIFIED ARE AS FOLLOWS  
.XX \_\_\_\_\_ .01  
.XXX \_\_\_\_\_ .005  
.XX ROUGH CASTING \_\_\_\_\_ .03  
HOLES \_\_\_\_\_ -.001 / +.006  
ANGLES \_\_\_\_\_ 0°30'

<b>D &amp; D MOTOR SYSTEMS INC</b>		<b>MOTOR OUTLINE</b>	
SIZE	DRAWN DATE	RELEASE DATE	DWG NO. / PART NO.
B	12-13-02		ES-50
SCALE	STF	DRAWN BY	MJG
		REV DATE	5-9-13
		REV	R3