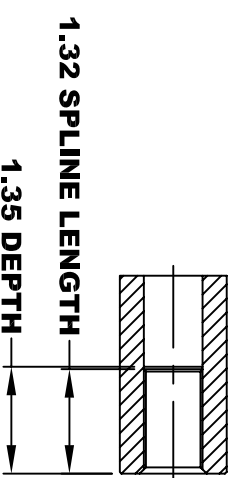
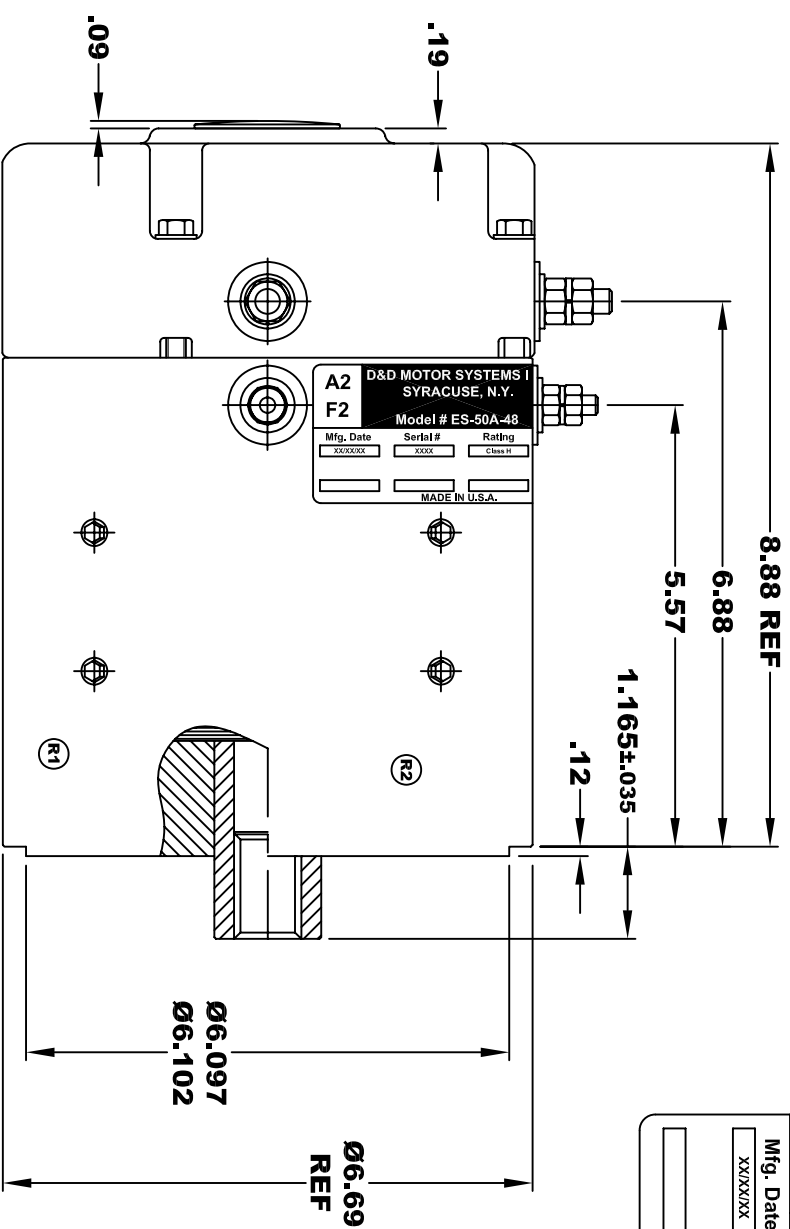
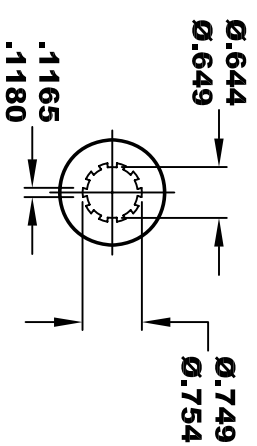
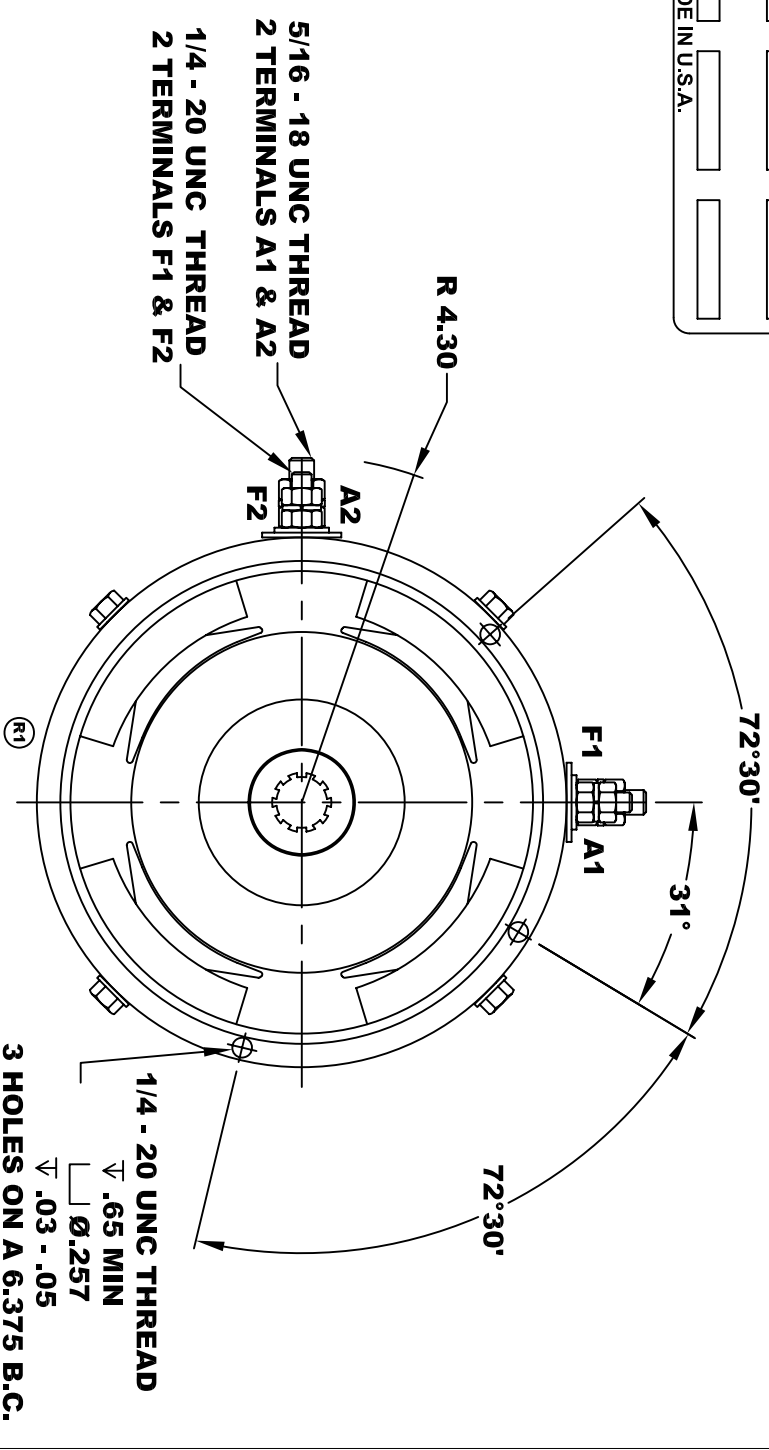


<b>D&amp;D MOTOR SYSTEMS INC.</b>		<b>A1</b>	
SYRACUSE N.Y.		<b>A2</b>	
Model # ES-50A-48		<b>F1</b>	
Mfg. Date	Serial #	Rating	Voltage
XXXXXX	XXXX	CLASS H	36 / 48
MADE IN U.S.A.			

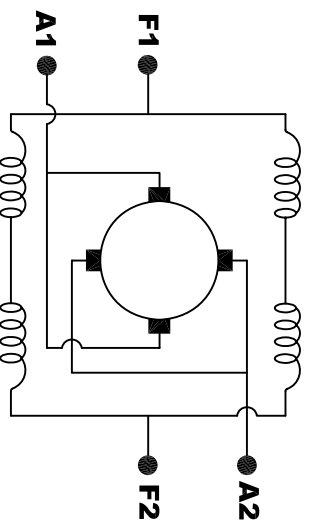


**TORQUE SPECIFICATION FOR  
POWER CABLE SECURING TOP NUTS**  
5/16-18 UNC (A1 / A2) - 110 IN / LBS MAX  
1/4-20 UNC (F1 / F2) - 50 IN / LBS MAX



**10 TOOTH  
INTERNAL SPLINE**

**MOTOR WEIGHT 46 LBS  
CLASS "H" INSULATION  
PERFORMANCE SPEC: 48**



**ELECTRICAL WIRING DIAGRAM**

**MOTOR WIRING CONNECTIONS:**  
**CW ROTATION DRIVE END**  
CONNECT A1 & F1 TO ONE BATTERY TERMINAL  
**CCW ROTATION DRIVE END**  
CONNECT A2 & F2 TO OTHER BATTERY TERMINAL  
**SWITCH F1 & F2 CONNECTIONS**

THIS PRINT IS THE PROPERTY OF D&D MOTOR SYSTEMS INC.  
DO NOT SCALE  
WORK TO DIMENSIONS  
TOLERANCES UNLESS OTHERWISE SPECIFIED ARE AS FOLLOWS  
.XX .01  
.XXX .005  
.XX ROUGH CASTING .03  
HOLES .001 / +.006  
ANGLES 0°30'

**D & D MOTOR SYSTEMS INC**  
**MOTOR OUTLINE**

SIZE	DRAWN DATE	RELEASE DATE	DWG NO. / PART NO.	REV
B	1-20-05		ES-50A-48	R2
SCALE	STF	DRAWN BY	MJG	REV DATE
				5-9-13