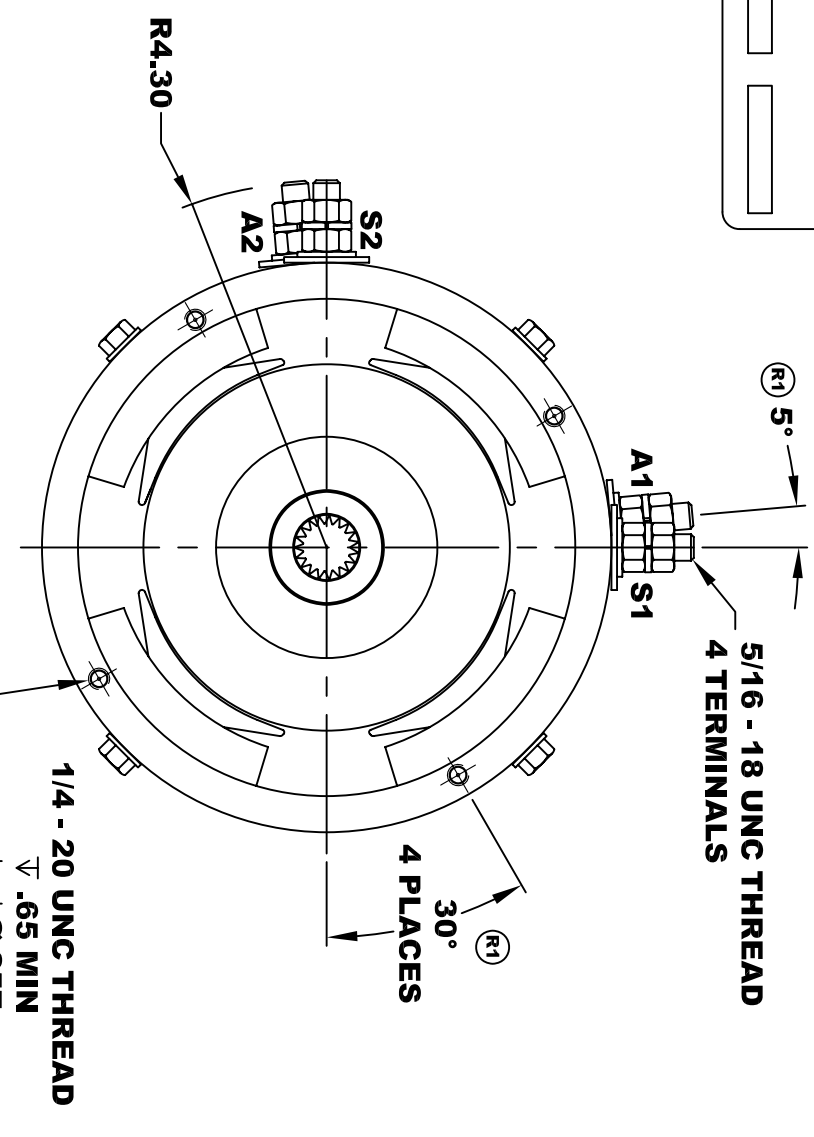
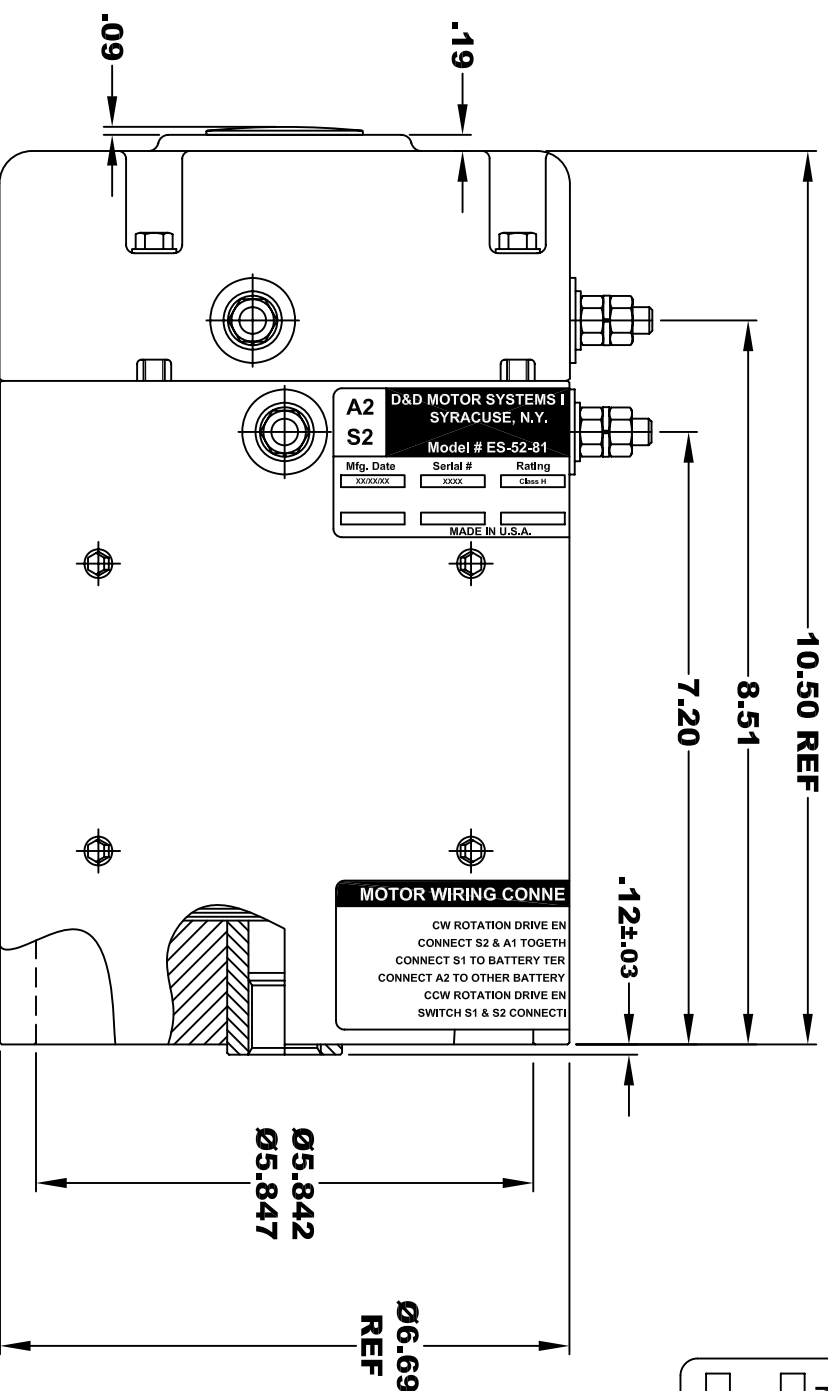


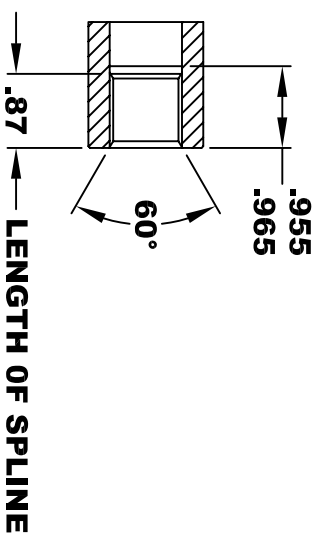
D&D MOTOR SYSTEMS INC.			
SYRACUSE N.Y.			
Model # ES-52-81			
A2	S2	A1	S1
Mfg. Date	Serial #	Rating	Voltage
XXXXXX	XXXX	CLASS H	XX
MADE IN U.S.A.			

**TORQUE SPECIFICATION FOR
POWER CABLE SECURING TOP NUTS**
5/16-18 UNC - 110 IN / LBS MAX

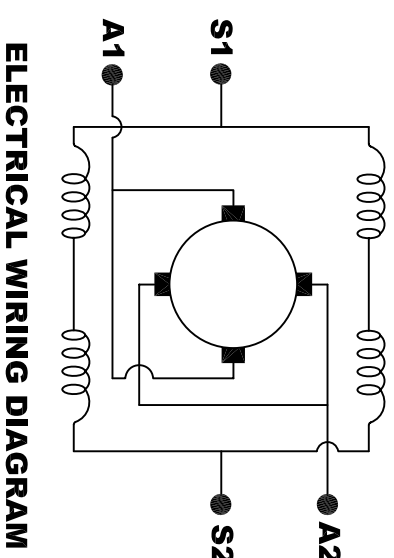


INTERNAL INVOLUTE SPLINE SPECIFICATION
CLASS 5 FILLET ROOT SIDE FIT (PER A.N.S.I. B92.1)

NO. OF TEETH	19
SPLINE PITCH	24 / 48
PRESSURE ANGLE	45°
BASE Ø	.5597 REF
PITCH Ø	.7916 REF
MAJOR Ø	.850 - .859
FORM Ø	.835
MINOR Ø	.767 - .772
CIRCULAR SPACE WIDTH	.0764
EFFECTIVE SPACE WIDTH	.0738
MAX. DIMENSION BETWEEN TWO PINS	.6714
PIN Ø	.0800
SPLINE HARDNESS TO BE R/C	26-34



MOTOR WEIGHT: 60 LBS
CLASS "H" INSULATION
PERFORMANCE SPEC: 81



ELECTRICAL WIRING DIAGRAM

MOTOR WIRING CONNECTIONS:

- CW ROTATION DRIVE END**
- CONNECT S2 & A1 TOGETHER**
- CONNECT S1 TO BATTERY TERMINAL**
- CONNECT A2 TO OTHER BATTERY TERMINAL**
- CCW ROTATION DRIVE END**
- SWITCH S1 & S2 CONNECTIONS**

D & D MOTOR SYSTEMS INC
MOTOR OUTLINE

THIS PRINT IS THE PROPERTY OF D&D MOTOR SYSTEMS INC.
DO NOT SCALE
WORK TO DIMENSIONS
TOLERANCES UNLESS OTHERWISE SPECIFIED ARE AS FOLLOWS
.XX .01
.XXX .005
.XX RROUGH CASTING .03
HOLES .001 / +.006
ANGLES 0°-30°

SIZE	DRAWN DATE	RELEASE DATE	DWG NO. / PART NO.	REV
B	9-30-10		ES-52-81	R2
SCALE	STF	DRAWN BY	MJG	REV DATE
				9-19-16