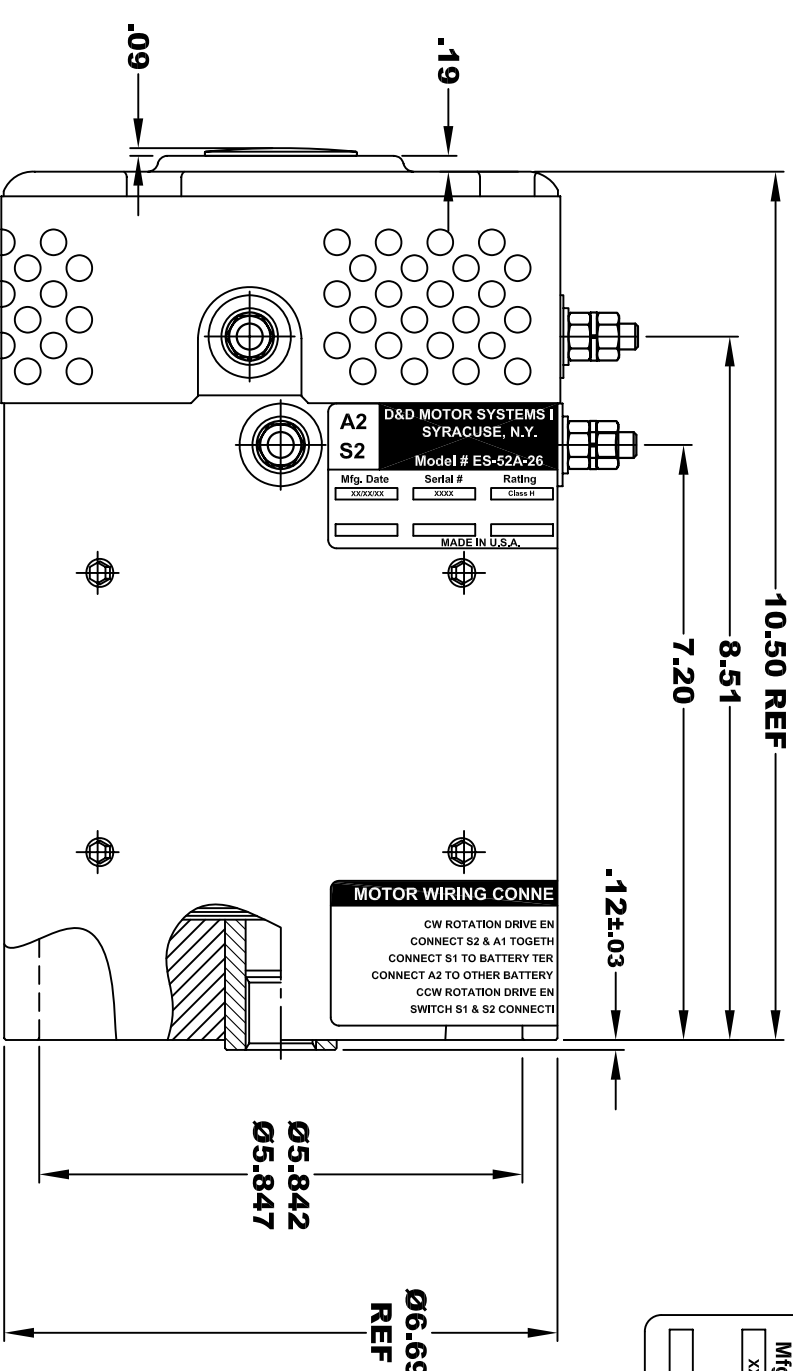


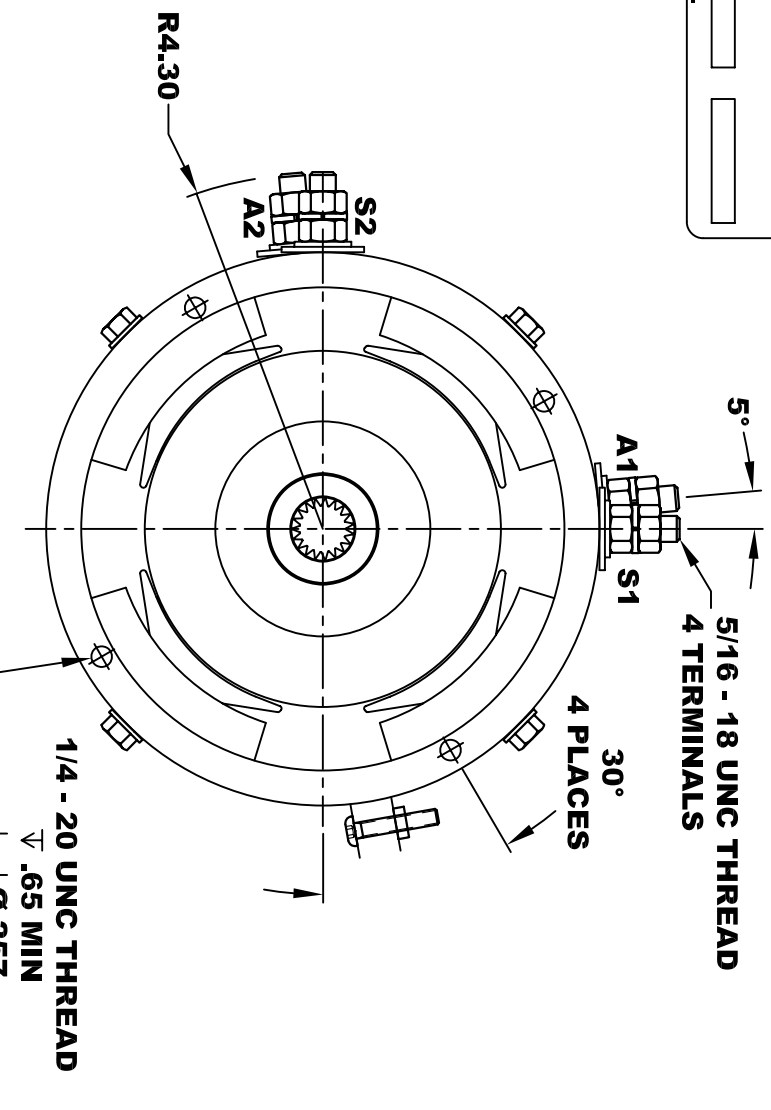
<b>A2</b>	<b>D&amp;D MOTOR SYSTEMS INC.</b>			<b>A1</b>
<b>S2</b>	<b>SYRACUSE N.Y.</b>			<b>S1</b>
<b>Model # ES-52A-26</b>				
Mfg. Date	Serial #	Rating	Voltage	
XX/XX/XX	XXXX	CLASS H	36 / 48 / 72	
			MADE IN U.S.A.	

**TORQUE SPECIFICATION FOR  
POWER CABLE SECURING TOP NUTS  
5/16-18 UNC - 110 IN / LBS MAX**



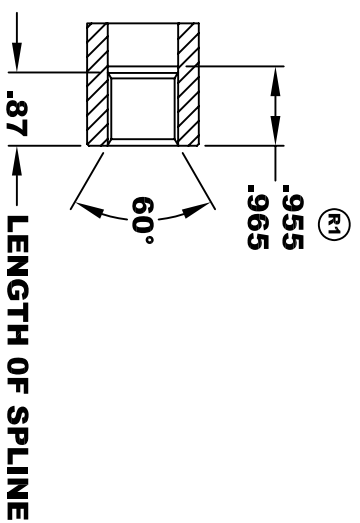
**D&D MOTOR SYSTEMS INC.**  
SYRACUSE, N.Y.  
Model # ES-52A-26  
Mfg. Date: XXXX/XX/XX Serial #: XXXX Rating: Class H  
MADE IN U.S.A.

**MOTOR WIRING CONNE**  
CW ROTATION DRIVE EN  
CONNECT S2 & A1 TOGETH  
CONNECT S1 TO BATTERY TER  
CONNECT A2 TO OTHER BATTERY  
CCW ROTATION DRIVE EN  
SWITCH S1 & S2 CONNECTI

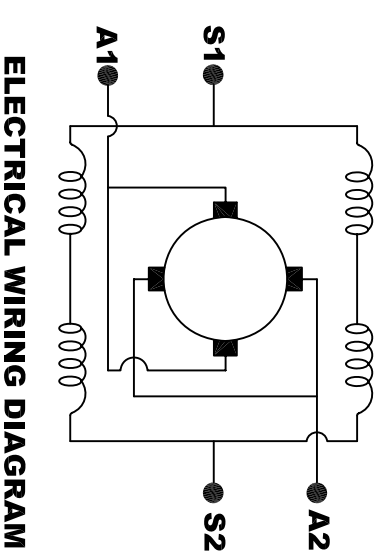


**INTERNAL INVOLUTE SPLINE SPECIFICATION  
CLASS 5 FILLET ROOT SIDE FIT (PER A.N.S.I. B92.1)**

- NO. OF TEETH \_\_\_\_\_ 19
- SPLINE PITCH \_\_\_\_\_ 24 / 48
- PRESSURE ANGLE \_\_\_\_\_ 45°
- BASE Ø \_\_\_\_\_ .5597 REF
- PITCH Ø \_\_\_\_\_ .7916 REF
- MAJOR Ø \_\_\_\_\_ .850 - .859
- FORM Ø \_\_\_\_\_ .835
- MINOR Ø \_\_\_\_\_ .767 - .772
- CIRCULAR SPACE WIDTH \_\_\_\_\_ .0764
- EFFECTIVE SPACE WIDTH \_\_\_\_\_ .0738
- MAX. DIMENSION BETWEEN \_\_\_\_\_
- TWO PINS \_\_\_\_\_ .6714
- PIN Ø \_\_\_\_\_ .0800
- SPLINE HARDNESS TO BE R/C 26-34



**MOTOR WEIGHT: 57 LBS  
CLASS "H" INSULATION  
PERFORMANCE SPEC: 26**



**MOTOR WIRING CONNECTIONS:**  
**CW ROTATION DRIVE END**  
**CONNECT S2 & A1 TOGETHER**  
**CONNECT S1 TO BATTERY TERMINAL**  
**CONNECT A2 TO OTHER BATTERY TERMINAL**  
**CCW ROTATION DRIVE END**  
**SWITCH S1 & S2 CONNECTIONS**

THIS PRINT IS THE PROPERTY OF D&D MOTOR SYSTEMS INC.  
DO NOT SCALE  
WORK TO DIMENSIONS  
TOLERANCES UNLESS OTHERWISE SPECIFIED ARE AS FOLLOWS  
.XX \_\_\_\_\_ .01  
.XXX \_\_\_\_\_ .005  
.XX ROUGH CASTING \_\_\_\_\_ .03  
HOLES \_\_\_\_\_ -.001 / +.006  
ANGLES \_\_\_\_\_ 0°30"

<b>D &amp; D MOTOR SYSTEMS INC</b>			
<b>MOTOR OUTLINE</b>			
SIZE	DRAWN DATE	RELEASE DATE	DWG NO. / PART NO.
B	9-16-04		ES-52A-26
SCALE	STF	DRAWN BY	REV DATE
		MJG	3-30-06
			REV
			R1