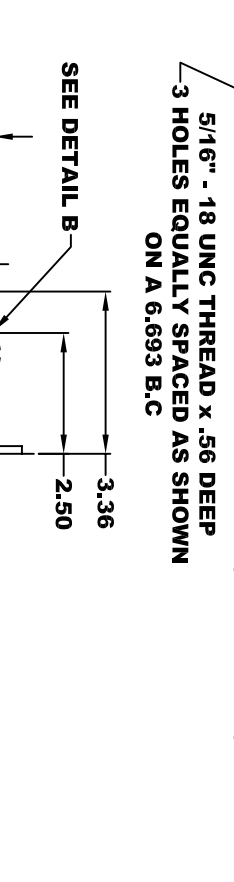
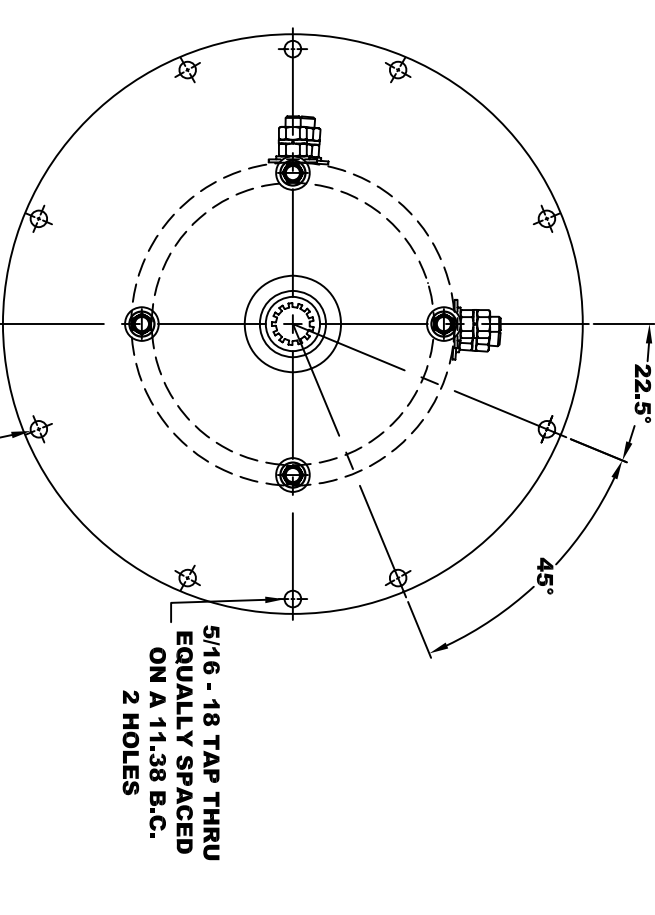
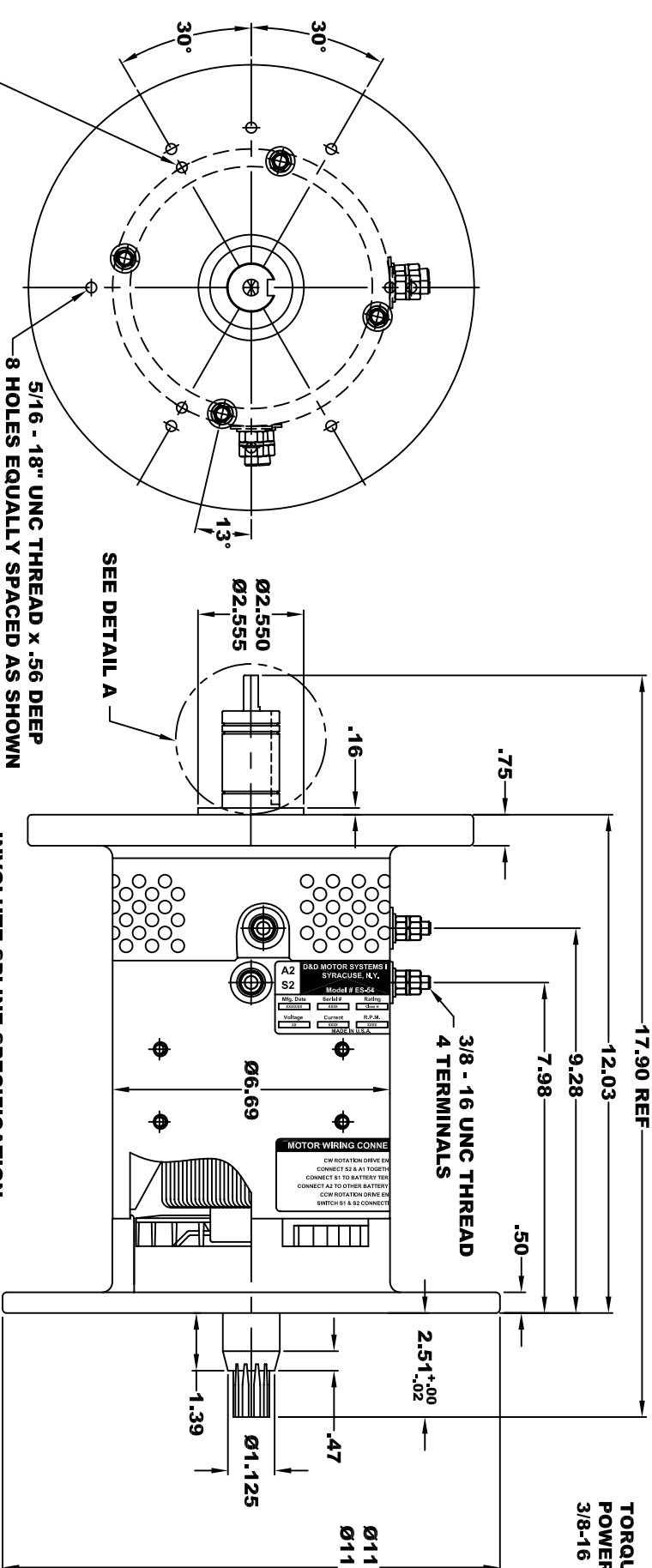
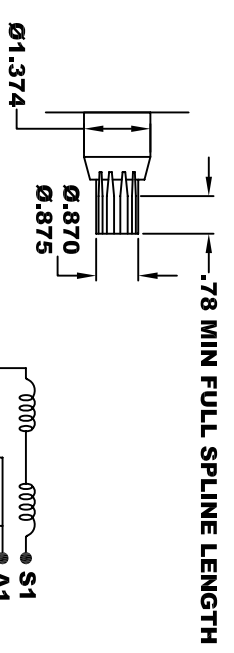


A2		D&D MOTOR SYSTEMS INC.		A1	
S2		SYRACUSE N.Y.		S1	
Mfg. Date	Serial #	Model # ES-54	Rating	Duty	
XXXXXX	XXXX	XXXX	XXXX	XXXX	
Voltage	Current	R.P.M.	H.P.		
XX	XXXX	XXXX	XX		
MADE IN U.S.A.					



INVOLUTE SPLINE SPECIFICATION
FLAT ROOT SIDE FIT

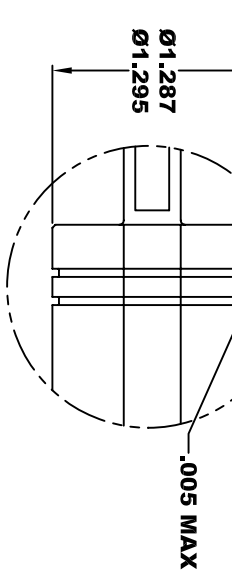
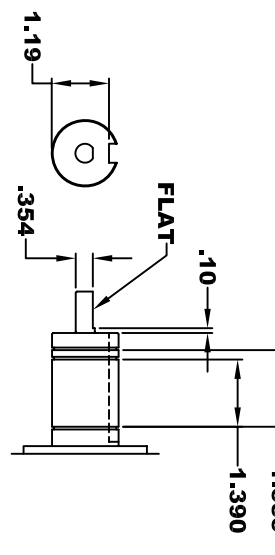
CLASS _____ 6
 NO. OF TEETH _____ 13
 SPLINE PITCH _____ 16/32
 PRESSURE ANGLE _____ 30°
 PITCH Ø _____ .8125 REF
 BASE Ø _____ .7036 REF



MOTOR WEIGHT: XX LBS
CLASS "H" INSULATION
PERFORMANCE SPEC: 1

ELECTRICAL WIRING DIAGRAM

MOTOR WIRING CONNECTIONS:
 CW ROTATION DRIVE END
 CONNECT S2 & A1 TOGETHER
 CONNECT S1 TO BATTERY TERMINAL
 CCW ROTATION DRIVE END
 SWITCH S1 & S2 CONNECTIONS



DETAIL A
SCALE: 1/1

DETAIL B
SCALE: 3/1

THIS PRINT IS THE PROPERTY OF D&D MOTOR SYSTEMS INC.
 DO NOT SCALE
 WORK TO DIMENSIONS
 TOLERANCES UNLESS OTHERWISE SPECIFIED ARE AS FOLLOWS

.XXX _____ .005
 .XX _____ .01
 .XX ROUGH CASTING _____ .03
 HOLES _____ -.001 / +.006
 ANGLES _____ 0°30"

D & D MOTOR SYSTEMS INC

MOTOR OUTLINE

SIZE	DRAWN DATE	RELEASE DATE	DWG NO. / PART NO.	REV
B	12-21-03		ES-54	R1
SCALE	DRAWN BY	REV DATE		
STF	MJG	1-25-06		