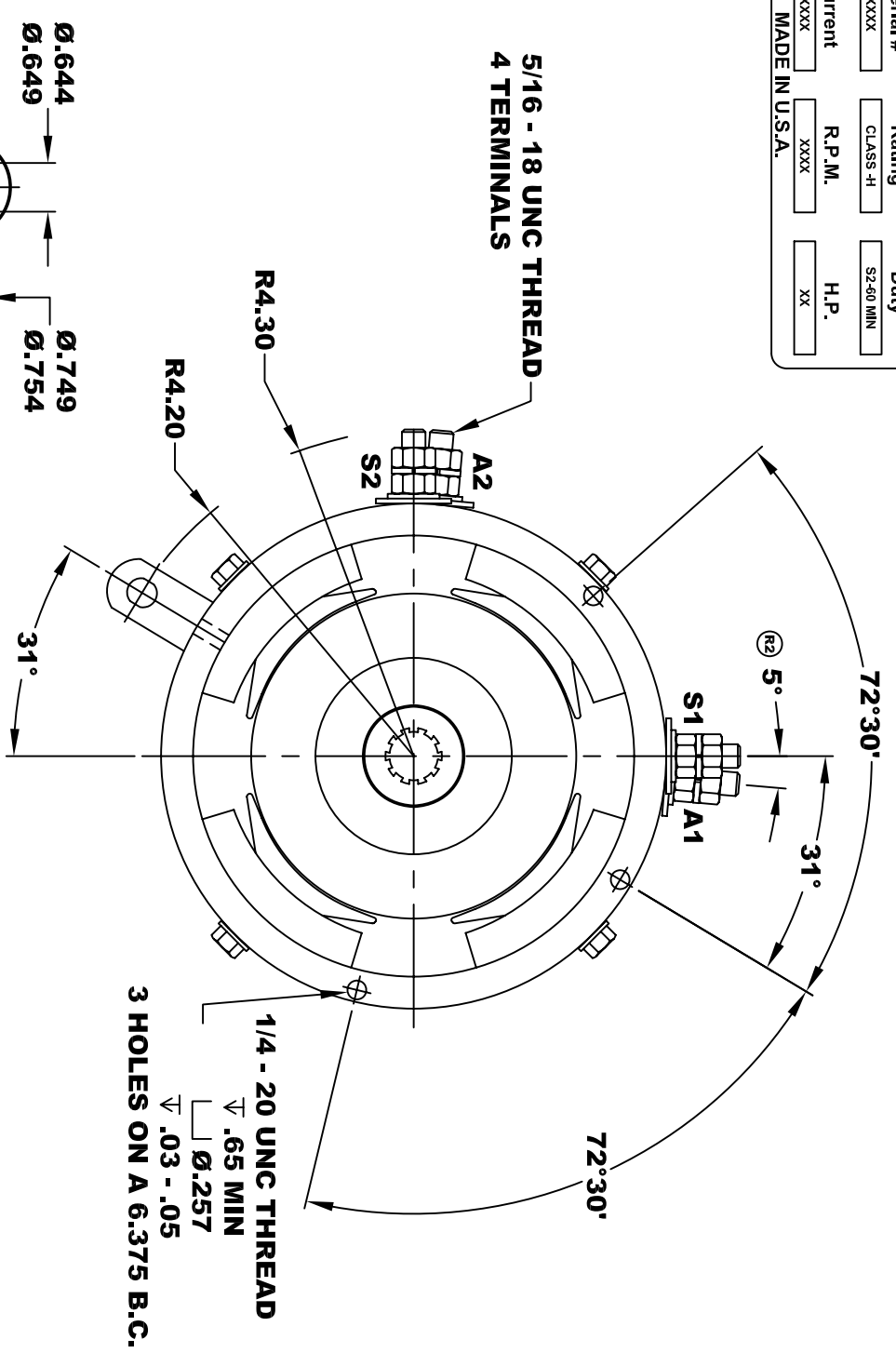
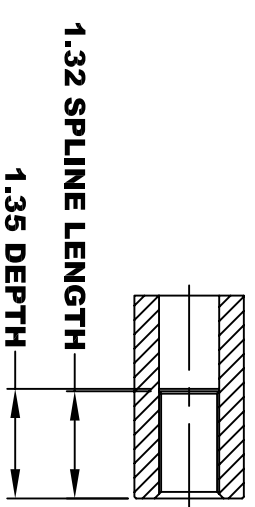
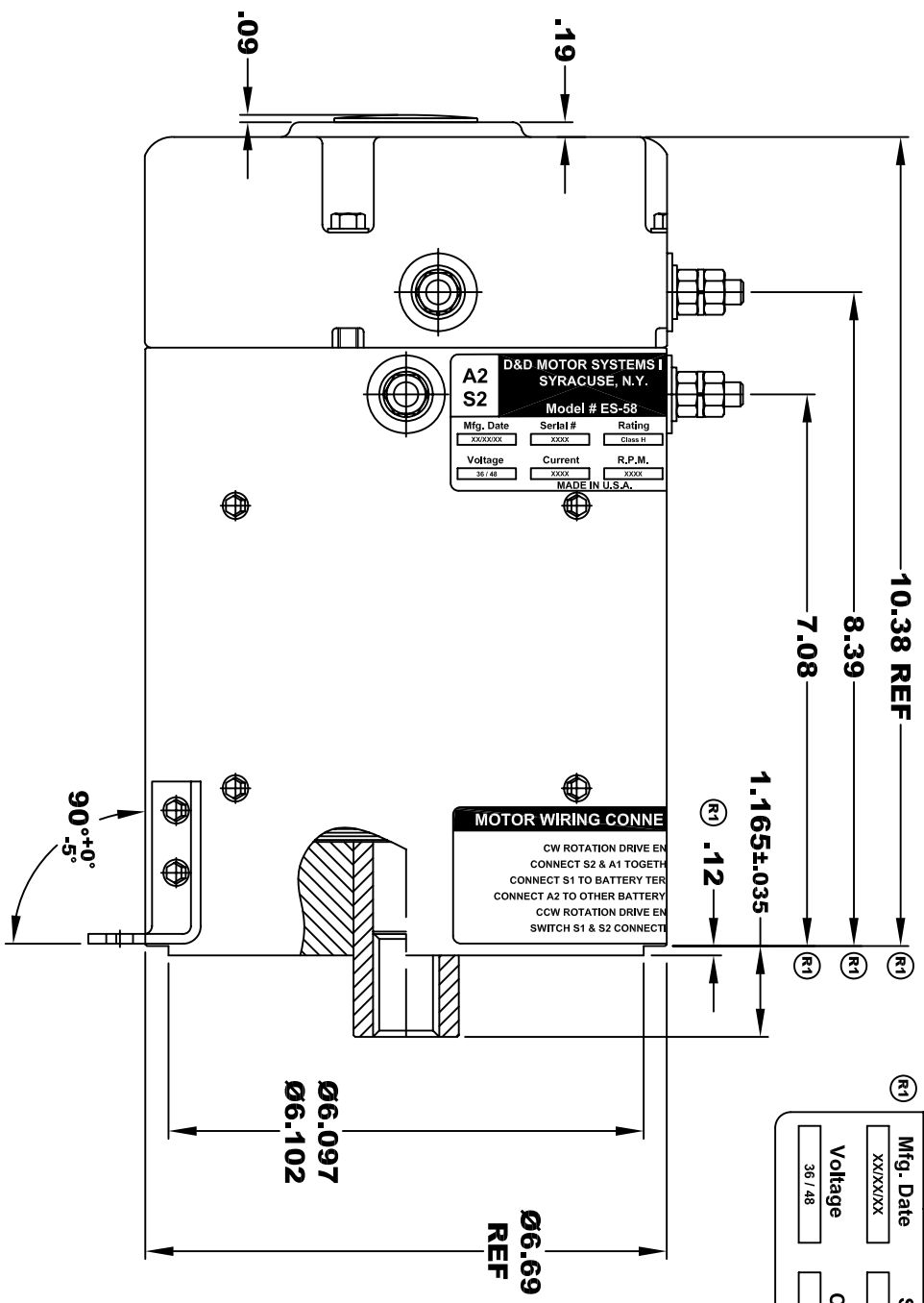


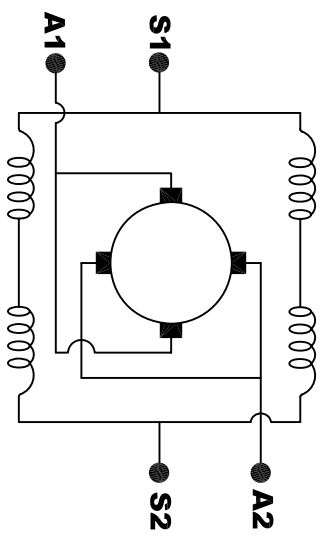
**TORQUE SPECIFICATION FOR
POWER CABLE SECURING TOP NUTS
5/16-18 UNC - 110 IN / LBS MAX**

A2		D&D MOTOR SYSTEMS INC.		A1	
S2		SYRACUSE, N.Y.		S1	
Model # ES-58					
Mfg. Date	Serial #	Rating	Duty		
XXXX/XX	XXXX	CLASS -H	S2-60 MIN		
Voltage	Current	R.P.M.	H.P.		
36 / 48	XXXX	XXXX	XX		
MADE IN U.S.A.					



**MOTOR WEIGHT 58 LBS
CLASS "H" INSULATION
PERFORMANCE SPEC: 26**

R2 REVISED VIEW



ELECTRICAL WIRING DIAGRAM

MOTOR WIRING CONNECTIONS:
CW ROTATION DRIVE END
 CONNECT S2 & A1 TOGETHER
 CONNECT S1 TO BATTERY TERMINAL
CCW ROTATION DRIVE END
 CONNECT A2 TO OTHER BATTERY TERMINAL
 SWITCH S1 & S2 CONNECTIONS

THIS PRINT IS THE PROPERTY OF D&D MOTOR SYSTEMS INC.
 DO NOT SCALE
 WORK TO DIMENSIONS
 TOLERANCES UNLESS OTHERWISE SPECIFIED ARE AS FOLLOWS
 .XX _____ .01
 .XXX _____ .005
 .XX ROUGH CASTING _____ .03
 HOLES _____ -.001 / +.006
 ANGLES _____ 0°30"

D & D MOTOR SYSTEMS INC			
MOTOR OUTLINE			
SIZE	DRAWN DATE	RELEASE DATE	DWG NO. / PART NO.
B	2-14-03		ES-58
SCALE	STF	DRAWN BY	MJG
			REV DATE
			11-23-04
			REV
			R2