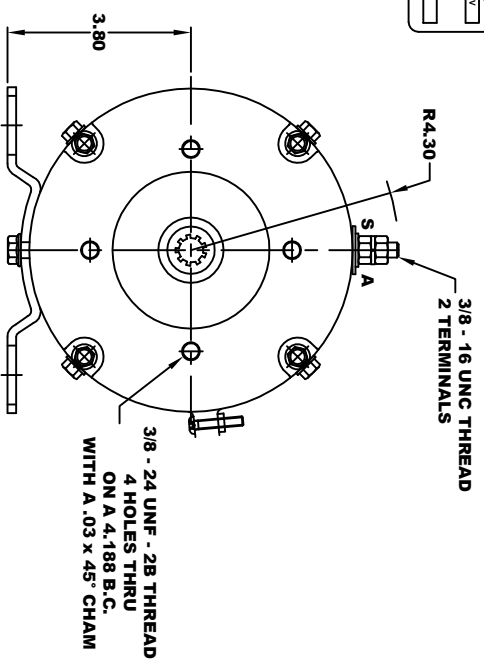
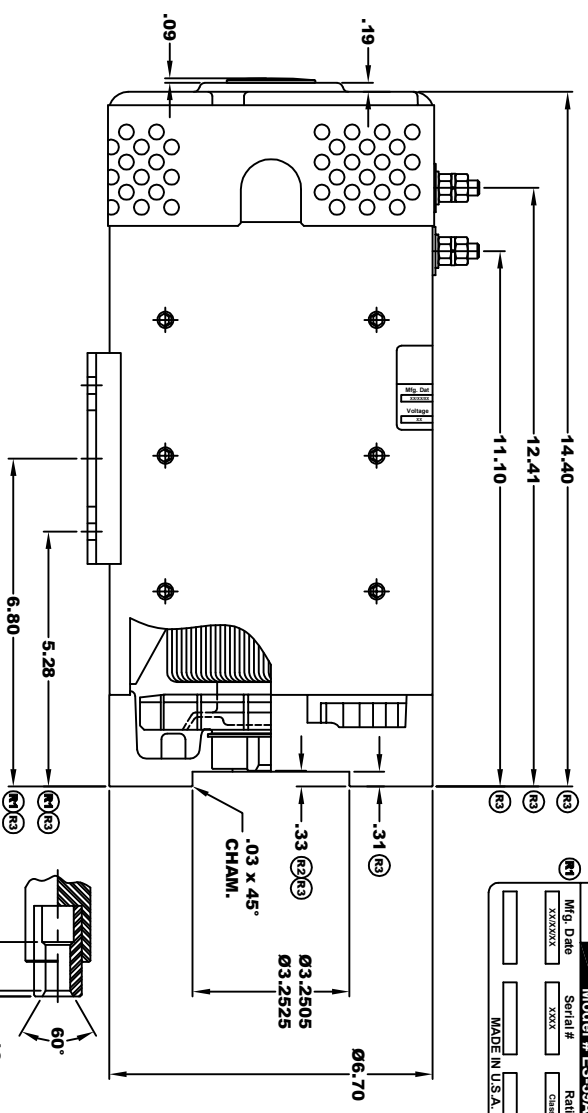


D&D MOTOR SYSTEMS INC.
 SYRACUSE N.Y.

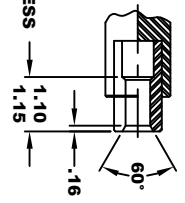
Model # **ES-59A-29**

Mfg. Date	Serial #	Rating	Voltage
XXXXXX	XXXX	Class H	24V - 27V
MADE IN U.S.A.			

**TORQUE SPECIFICATION FOR
 POWER CABLE SECURING TOP NUTS**
 3/8 - 16 UNC - 140 IN / LBS MAX



SPLINE HARDNESS
 R/C 46 - 52

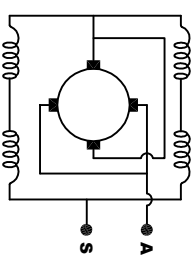
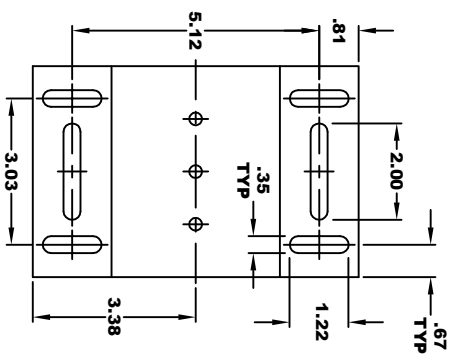


INTERNAL INVOLUTE SPLINE SPECIFICATION
 FLAT ROOT SIDE FIT (PER A.N.S.I. B92.1 CLASS 5)

- NO. OF TEETH — 9
- SPLINE PITCH — 16 / 32
- PRESSURE ANGLE — 30°
- BASE Ø — .4871 REF
- PITCH Ø — .5625 REF
- MAJOR Ø — .651
- FORM Ø — .629
- MINOR Ø — .509 - .514

⊙	.010	A
⊙	.010	B

- CIRCULAR SPACE WIDTH — .1008
- MAX EFFECTIVE — .0982
- MAX DIMENSION BETWEEN TWO PINS — .3972
- PIN Ø — .1080



ELECTRICAL WIRING DIAGRAM

MOTOR WIRING CONNECTIONS:
 CCW ROTATION DRIVE END
 CONNECT ONE POWER CABLE TO TERMINAL A
 CONNECT THE OTHER POWER CABLE TO TERMINAL S

MOTOR WEIGHT: XX LBS
 CLASS "H" INSULATION
 PERFORMANCE SPEC: 29

THIS PRINT IS THE PROPERTY OF D&D MOTOR SYSTEMS INC.
 DO NOT SCALE
 WORK TO DIMENSIONS
 TOLERANCES UNLESS OTHERWISE SPECIFIED ARE AS FOLLOWS

XX	.01
XXX	.005
XXK	.03
HOLE	.001 / +.006
ANGLES	±.30°

D & D MOTOR SYSTEMS INC

MOTOR OUTLINE

SIZE	DRAWN DATE	RELEASE DATE	DRG NO. / PART NO.	REV
B	08-08-23		ES-59A-29	
SCALE	DRAWN BY	AGD	REV DATE	