

Ⓜ \*NOTE: Ⓜ  
 APPLY ONE DROP OF  
 ITEM # 14 TO THE  
 THREADS OF HFAS - 6000  
 (ITEM # 12)

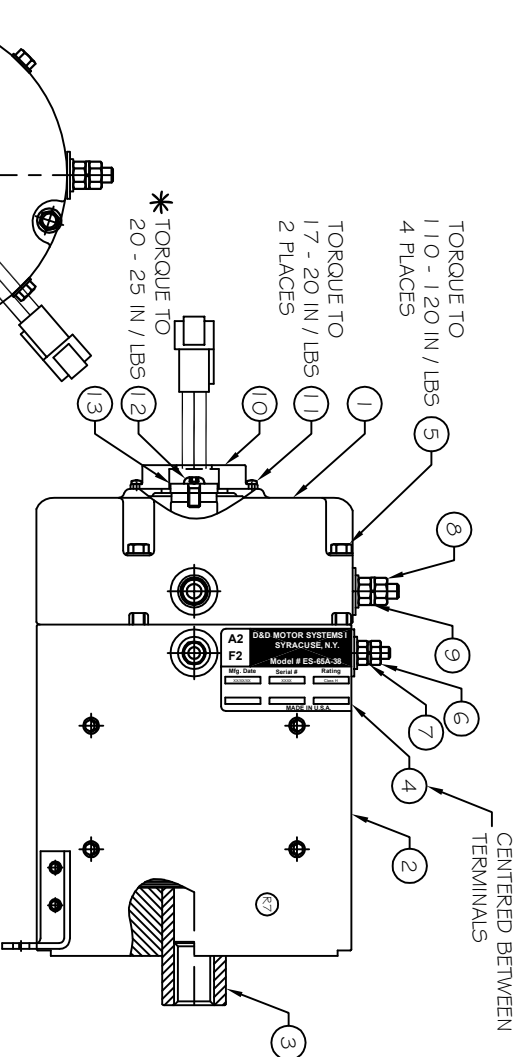
**D&D MOTOR SYSTEMS INC.**  
 SYRACUSE N.Y.

**A2**  
**F2**

Model # ES-65A-38

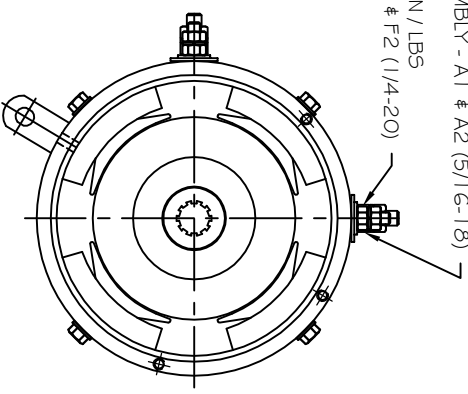
Mfg Date: \_\_\_\_\_ Serial #: \_\_\_\_\_  
 Volts: \_\_\_\_\_ Rating: \_\_\_\_\_  
 Class: \_\_\_\_\_ Voltage: \_\_\_\_\_

MADE IN U.S.A.



TORQUE BOTTOM NUT TO 120 - 140 IN / LBS  
 2 PLACES PRIOR TO ASSEMBLY - A1 & A2 (5/16-18)

TORQUE BOTTOM NUT TO 50 - 70 IN / LBS  
 2 PLACES PRIOR TO ASSEMBLY - F1 & F2 (1/4-20)



ITEM #	PART #	QUANTITY	PART DESCRIPTION
Ⓜ	1 CEHA170 - 0001	1	COMMUTATOR END HEAD ASSEMBLY
2	EP-489A	1	FRAME & FIELD ASSEMBLY
3	ARMA170 - 0012A	1	ARMATURE ASSEMBLY
Ⓜ	4 NALB - 3007	1	NAME LABEL
5	HFAS - 3001	4	SCREW
6	HNUT - 1000	2	NUT (1/4-20)
7	HWS - 2000	2	LOCK WASHER
8	HNUT - 1001	2	NUT (5/16-18)
9	HMS - 2001	2	LOCK WASHER
10	SPDS - 0002	1	SPEED SENSOR
11	HFAS - 5000	2	SCREW
12	HFAS - 6000	1	SCREW
13	MANT - 1004	1	MAGNET
Ⓜ	14 LOCT - 0001	1	LOC - TITE

THIS PRINT IS THE PROPERTY OF D&D MOTOR SYSTEMS, INC.  
 DO NOT SCALE  
 WORK TO DIMENSIONS  
 TOLERANCES UNLESS OTHERWISE SPECIFIED ARE AS FOLLOWS

XX \_\_\_\_\_ .01  
 XXX \_\_\_\_\_ .005  
 XX ROUGH CASTING \_\_\_\_\_ .03  
 HOLES \_\_\_\_\_ -.001 / +.006  
 ANGLES \_\_\_\_\_ 0°30'

**D&D MOTOR SYSTEMS INC.**

**MOTOR ASSEMBLY**

SIZE: B DRAWN DATE: 2-5-04 RELEASE DATE: \_\_\_\_\_ DWG NO. / PART NO.: ES-65A-38 (Ⓜ) REV: R7  
 SCALE: STF DRAWN BY: MJG REV DATE: 3-8-13