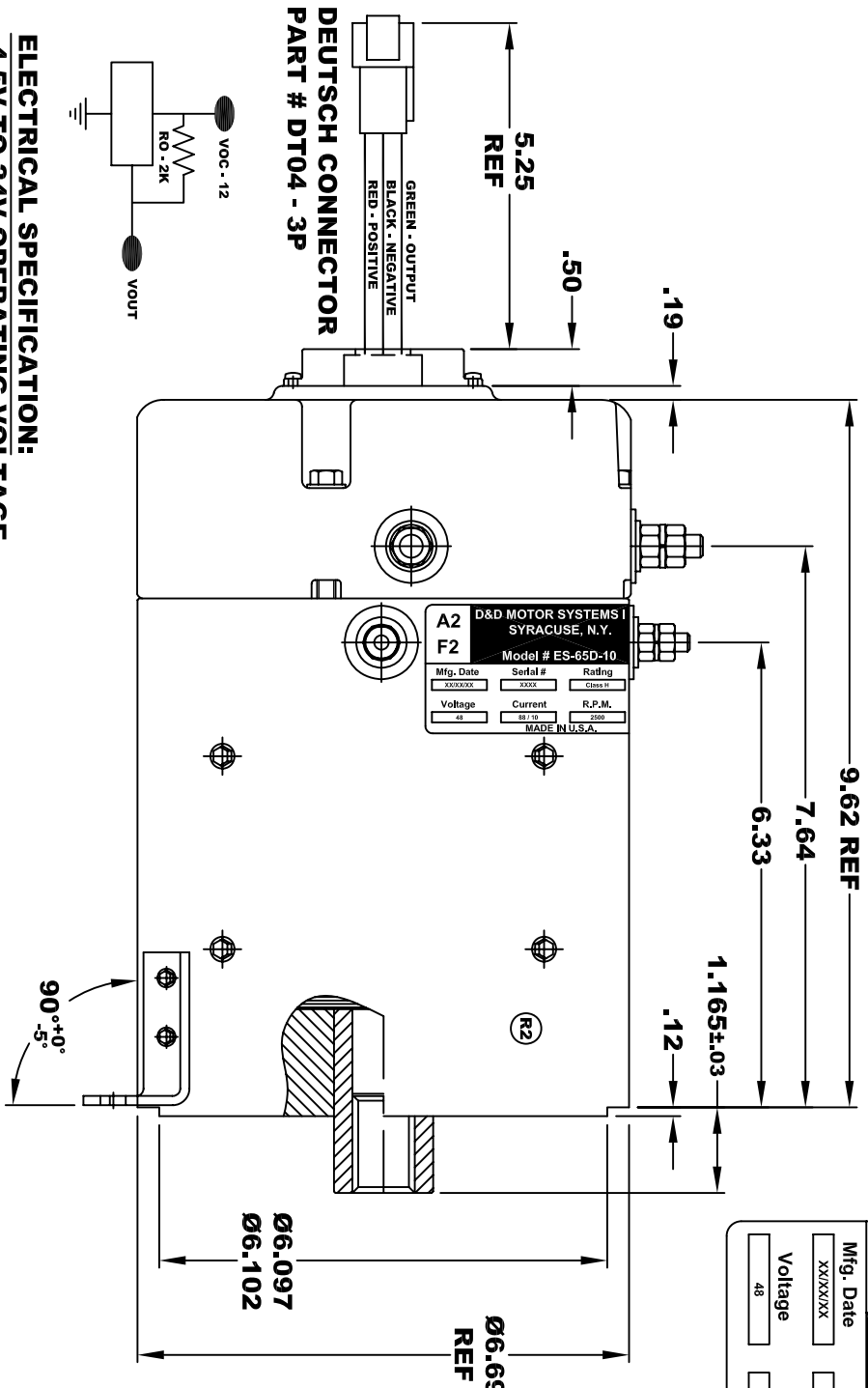
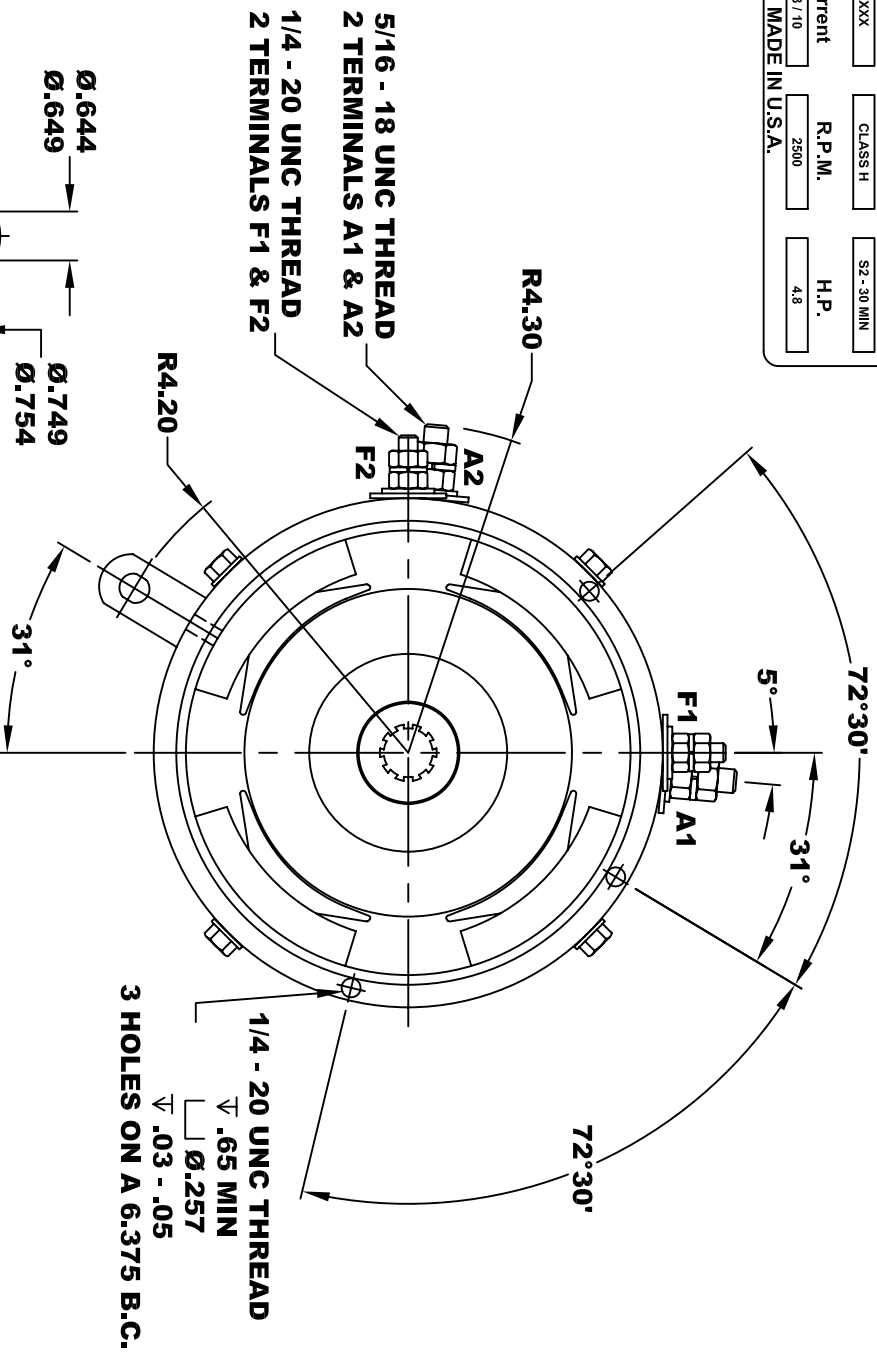
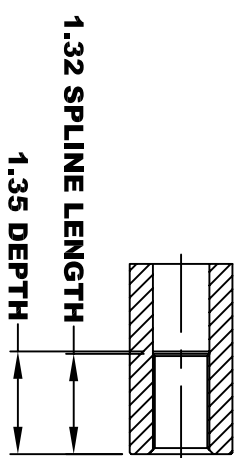


**TORQUE SPECIFICATION FOR  
POWER CABLE SECURING TOP NUTS**  
5/16-18 UNC (A1 / A2) - 110 IN / LBS MAX  
1/4-20 UNC (F1 / F2) - 50 IN / LBS MAX

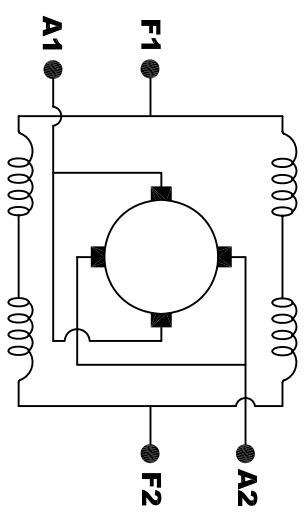
<b>D&amp;D MOTOR SYSTEMS INC.</b>		<b>A1</b>	
SYRACUSE N.Y.		<b>F1</b>	
<b>Model # ES-65D-10</b>			
Mfg. Date	Serial #	Rating	Duty
XXXXXX	XXXX	CLASS H	S2 - 30 MIN
Voltage	Current	R.P.M.	H.P.
48	88 / 10	2500	4.8
MADE IN U.S.A.			



**ELECTRICAL SPECIFICATION:**  
-4.5V TO 24V OPERATING VOLTAGE  
-20°C TO 85°C OPERATING TEMPERATURE  
-CURRENT SINKING UP TO 25mA  
-AN EXTERNAL OUTPUT PULL UP RESISTOR IS REQUIRED  
-SENSOR IS DESIGNED TO OPERATE WITH 2 N/S POLEPAIRS (R1)  
AND THE HOUSING, INCLUDING ANY RUNOUT  
SHOULD NOT EXCEED .030 INCHES



**MOTOR WEIGHT 53 LBS  
CLASS "H" INSULATION  
PERFORMANCE SPEC: 10**



**ELECTRICAL WIRING DIAGRAM**

**MOTOR WIRING CONNECTIONS:**  
CW ROTATION DRIVE END  
CONNECT A1 & F1 TO ONE BATTERY TERMINAL  
CONNECT A2 & F2 TO OTHER BATTERY TERMINAL  
CCW ROTATION DRIVE END  
SWITCH F1 & F2 CONNECTIONS

THIS PRINT IS THE PROPERTY OF D&D MOTOR SYSTEMS INC.  
DO NOT SCALE  
WORK TO DIMENSIONS  
TOLERANCES UNLESS OTHERWISE SPECIFIED ARE AS FOLLOWS

.XX	.01
.XXX	.005
.XX ROUGH CASTING	.03
HOLES	-.001 / +.006
ANGLES	0°30"

<b>D &amp; D MOTOR SYSTEMS INC</b>		<b>MOTOR OUTLINE</b>	
SIZE	DRAWN DATE	RELEASE DATE	DWG NO. / PART NO.
B	9-1-04		ES-65D-10
SCALE	STF	DRAWN BY	REV DATE
		MJG	5-13-13
			REV
			R2