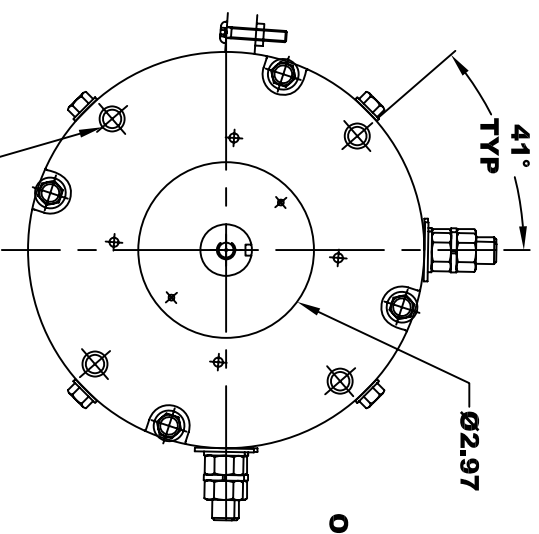
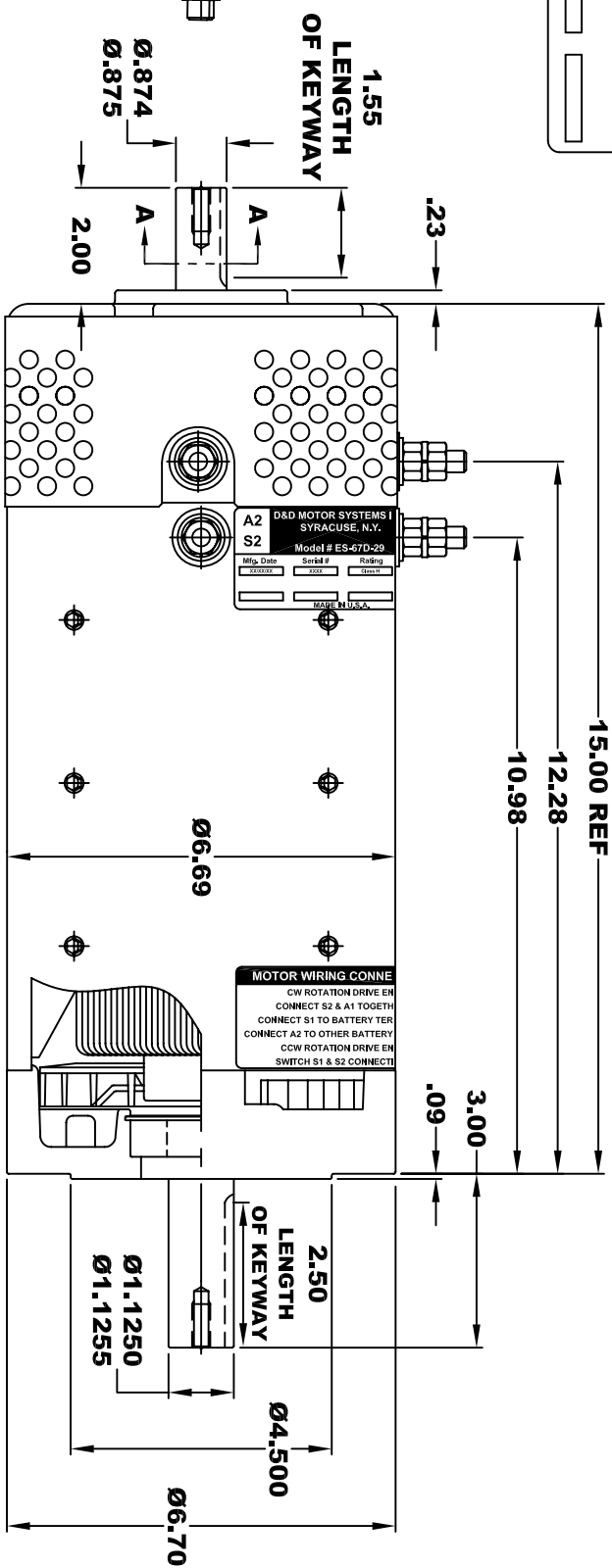


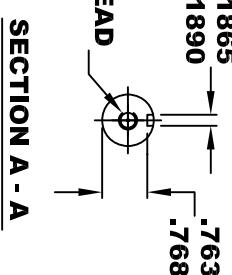
A2	D&D MOTOR SYSTEMS INC.				A1
S2	SYRACUSE N.Y.				S1
Model #	ES-67D-29	Rating		Voltage	
Mfg. Date	XXXX	Serial #	XXXX	Class #	XX
XXXXXX		MADE IN U.S.A.			



Ø 3/8 - 16 UNC THREAD
TAPPED THRU
.03-.05 x 45° CHAMFER
4 PLACES, ON A Ø5.875 B. C.

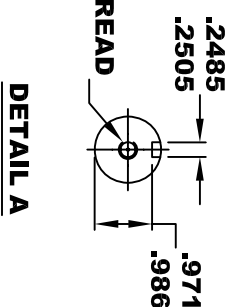


5/16 - 18 UNC THREAD
▽ .75



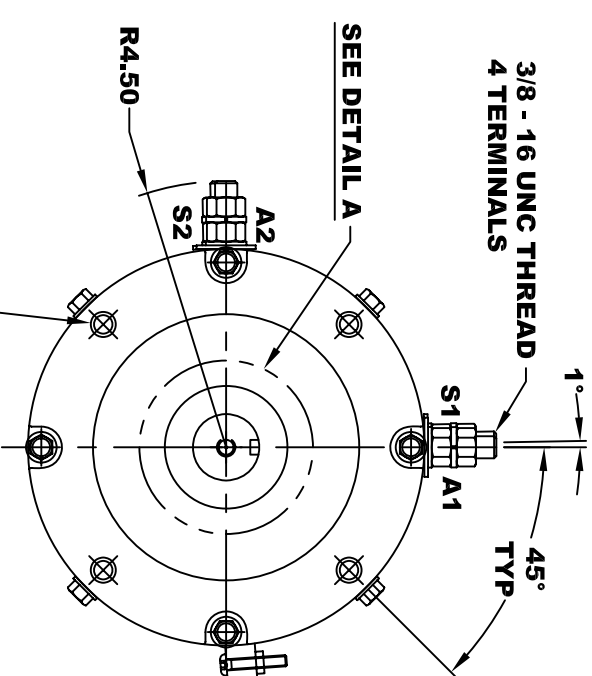
SECTION A - A

5/16 - 18 UNC THREAD
▽ .75

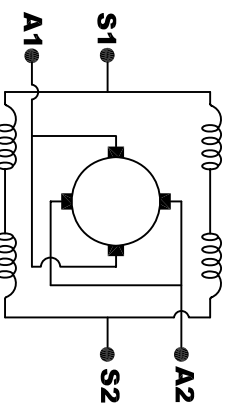


DETAIL A

Ø 3/8 - 16 UNC THREAD
▽ .65 MINIMUM
BREAK THRU PERMISSABLE
.03-.05 x 45° CHAMFER
4 PLACES, ON A Ø5.875 B. C.



**TORQUE SPECIFICATION FOR
POWER CABLE SECURING TOP NUTS
3/8-16 UNC - 140 IN / LBS MAX**



ELECTRICAL WIRING DIAGRAM

MOTOR WIRING CONNECTIONS:
CW ROTATION DRIVE END
CONNECT S2 & A1 TOGETHER
CONNECT S1 TO BATTERY TERMINAL
CCW ROTATION DRIVE END
CONNECT A2 TO OTHER BATTERY TERMINAL
CONNECT S1 & S2 CONNECTIONS

MOTOR WEIGHT: 83 LBS
CLASS "H" INSULATION
PERFORMANCE SPEC: 29

THIS PRINT IS THE PROPERTY OF D&D MOTOR SYSTEMS INC.
DO NOT SCALE
WORK TO DIMENSIONS
TOLERANCES UNLESS OTHERWISE SPECIFIED ARE AS FOLLOWS
.XXX _____ .005
.XX _____ .01
.XX ROUGH CASTING _____ .03
HOLES _____ -.001 / +.006
ANGLES _____ 0°30"

D & D MOTOR SYSTEMS INC
MOTOR OUTLINE

SIZE	DRAWN DATE	RELEASE DATE	DWG NO. / PART NO.	REV
B	6-16-11		ES-67D-29	
SCALE	STF	DRAWN BY	MJG	REV DATE