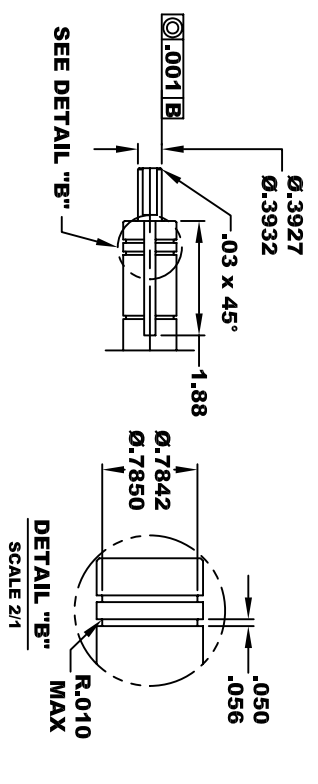
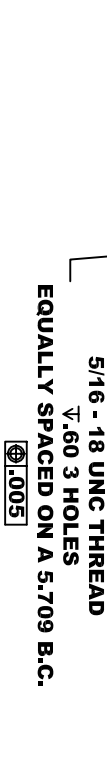
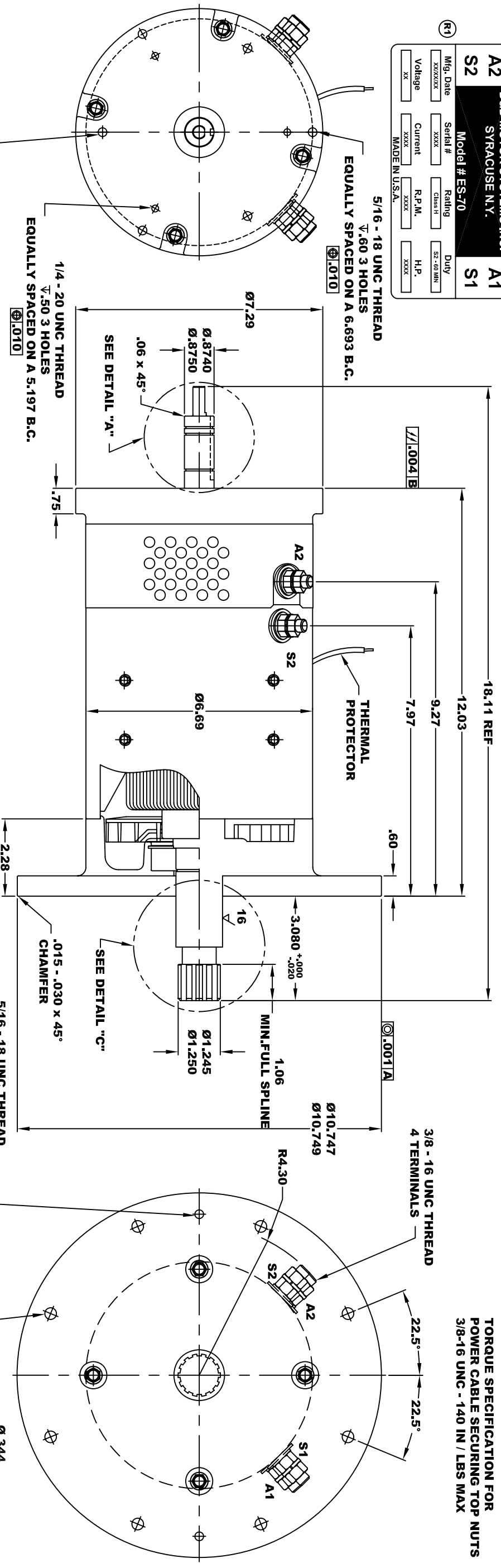
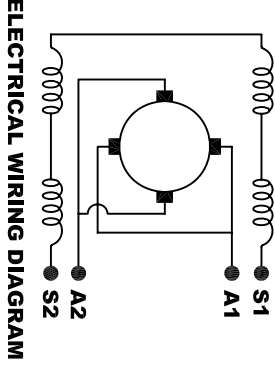
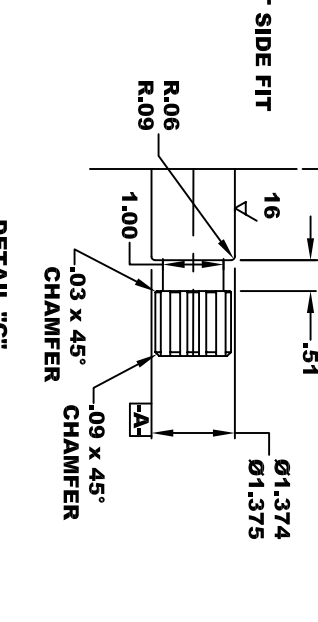


<b>D&amp;D MOTOR SYSTEMS INC.</b>		<b>A2</b>		<b>A1</b>	
<b>SYRACUSE N.Y.</b>		<b>S2</b>		<b>S1</b>	
<b>Model # ES-70</b>					
Mfg. Date	Serial #	Rating	Class H	S2-60 MIN	Duty
xxxxxx	xxxx	xxxx	xxxx	xxxx	xxxx
Voltage	Current	R.P.M.	H.P.		
xx	xxxx	xxxx	xxxx		
MADE IN U.S.A.					

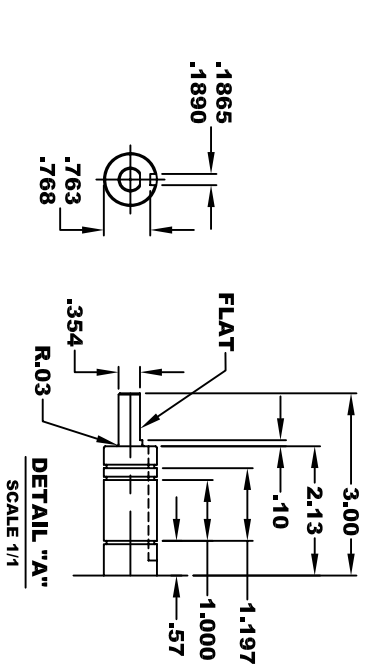


**INVOLUTE SPLINE DATA**

TYPE	FLAT ROOT SIDE FIT
CLASS	6
NO. OF TEETH	14
PITCH	12 / 24
PRESSURE ANGLE	30°
PITCH DIA.(REF)	1.1667
BASE DIA.(REF)	1.0104



**MOTOR WIRING CONNECTIONS:**  
 CW ROTATION DRIVE END  
 CONNECT S2 & A1 TOGETHER  
 CONNECT S1 TO BATTERY TERMINAL  
 CONNECT A2 TO OTHER BATTERY TERMINAL  
 CCW ROTATION DRIVE END  
 SWITCH S1 & S2 CONNECTIONS



**MOTOR WEIGHT: XX LBS**  
**CLASS "H" INSULATION**  
**PERFORMANCE SPEC: XX**

**THIS PRINT IS THE PROPERTY OF D&D MOTOR SYSTEMS INC.**  
 DO NOT SCALE  
 WORK TO DIMENSIONS  
 TOLERANCES UNLESS OTHERWISE SPECIFIED ARE AS FOLLOWS

.XXX	.005
.XX	.01
.XX ROUGH CASTING	.03
HOLES	-.001 / +.006
ANGLES	0°30'

<b>D &amp; D MOTOR SYSTEMS INC</b>		<b>MOTOR OUTLINE</b>	
SIZE	DRAWN DATE	RELEASE DATE	DWG NO. / PART NO.
B	3-14-03		ES-70
SCALE	STF	DRAWN BY	REV DATE
		MJG	1-25-06