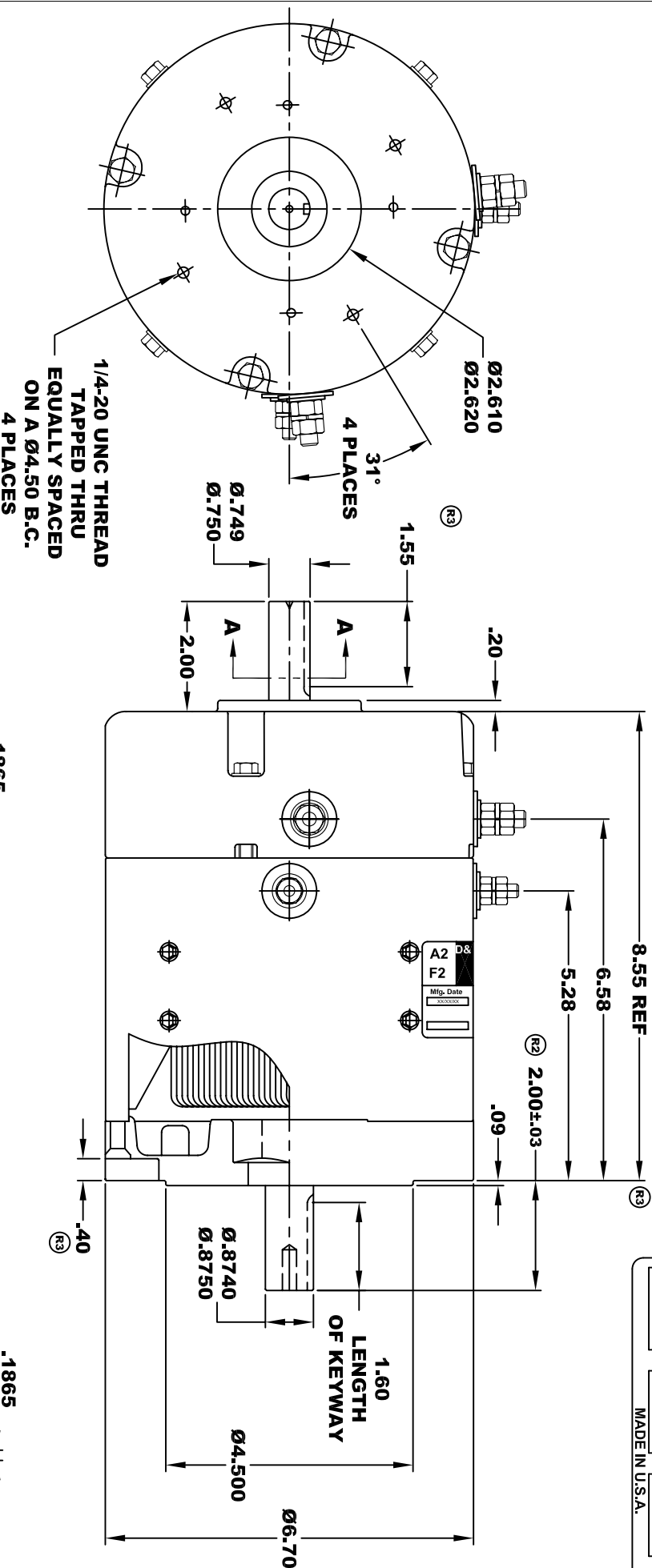
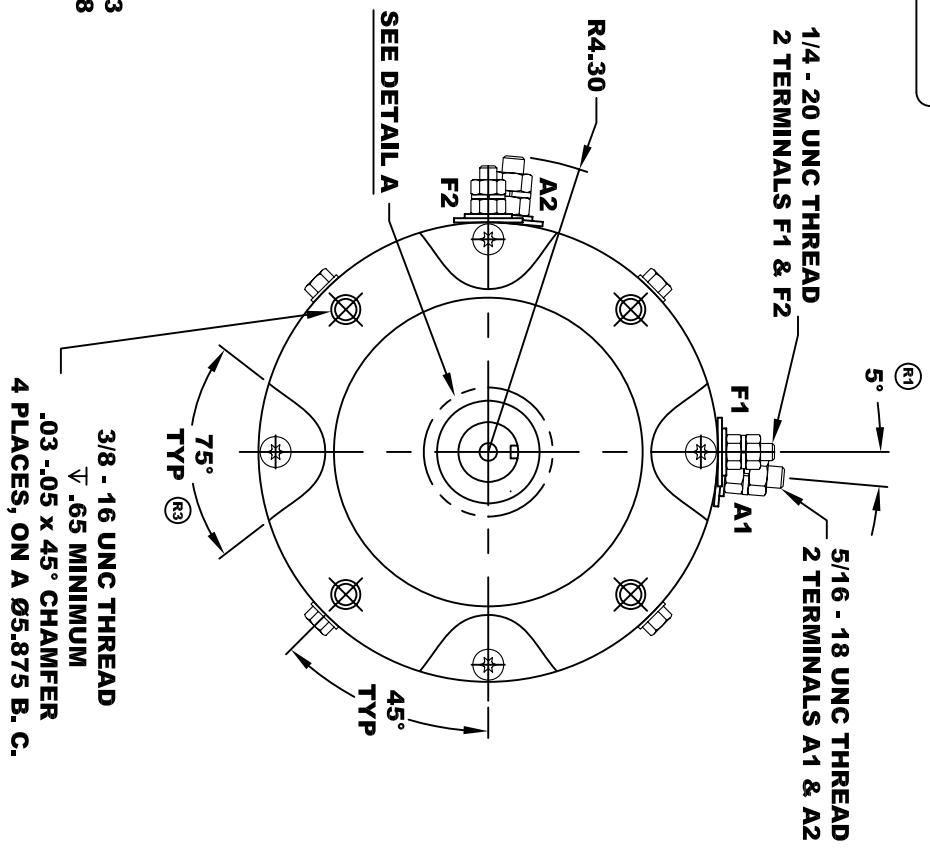


R3 REVISE VIEW

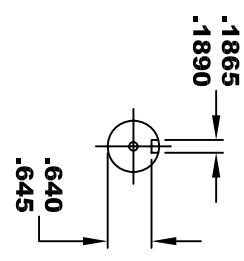


| | | | |
|-----------------------------------|-----------|-----------|-----------|
| D&D MOTOR SYSTEMS INC. | | | |
| SYRACUSE N.Y. | | | |
| A2 | F2 | A1 | F1 |
| Model # ES-71-45 | | | |
| Mfg. Date | Serial # | Rating | Voltage |
| XX/XX/XX | XXXX | CLASS H | XX |
| MADE IN U.S.A. | | | |

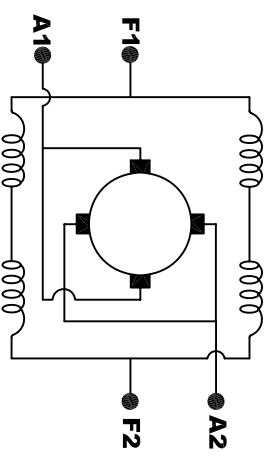
TORQUE SPECIFICATION FOR POWER CABLE SECURING TOP NUTS
 5/16-18 UNC (A1 / A2) - 110 IN / LBS MAX
 1/4-20 UNC (F1 / F2) - 50 IN / LBS MAX



SECTION A-A



DETAIL A



ELECTRICAL WIRING DIAGRAM

MOTOR WIRING CONNECTIONS:
CW ROTATION DRIVE END
 CONNECT A1 & F1 TO ONE BATTERY TERMINAL
CCW ROTATION DRIVE END
 CONNECT A2 & F2 TO OTHER BATTERY TERMINAL
 SWITCH F1 & F2 CONNECTIONS

MOTOR WEIGHT: 38 LBS
CLASS "H" INSULATION
PERFORMANCE SPEC: 45

THIS PRINT IS THE PROPERTY OF D&D MOTOR SYSTEMS INC.
 DO NOT SCALE
 WORK TO DIMENSIONS
 TOLERANCES UNLESS OTHERWISE SPECIFIED ARE AS FOLLOWS
 .XX _____ .01
 .XXX _____ .005
 .XX ROUGH CASTING _____ .03
 HOLES _____ -.001 / +.006
 ANGLES _____ 0°30"

D & D MOTOR SYSTEMS INC

MOTOR OUTLINE

| | | | | |
|-------|------------|--------------|--------------------|----------|
| SIZE | DRAWN DATE | RELEASE DATE | DWG NO. / PART NO. | REV |
| B | 3-18-03 | | ES-71-45 (R) | R3 |
| SCALE | STF | DRAWN BY | MJG | REV DATE |
| | | | | 1-5-05 |