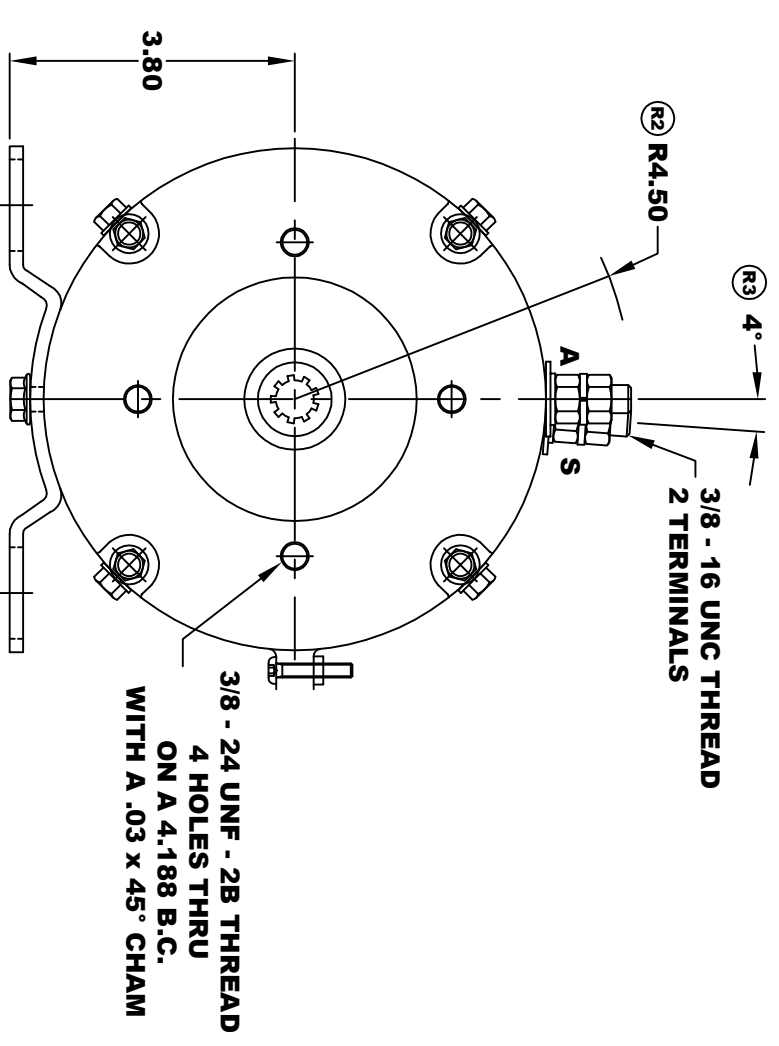
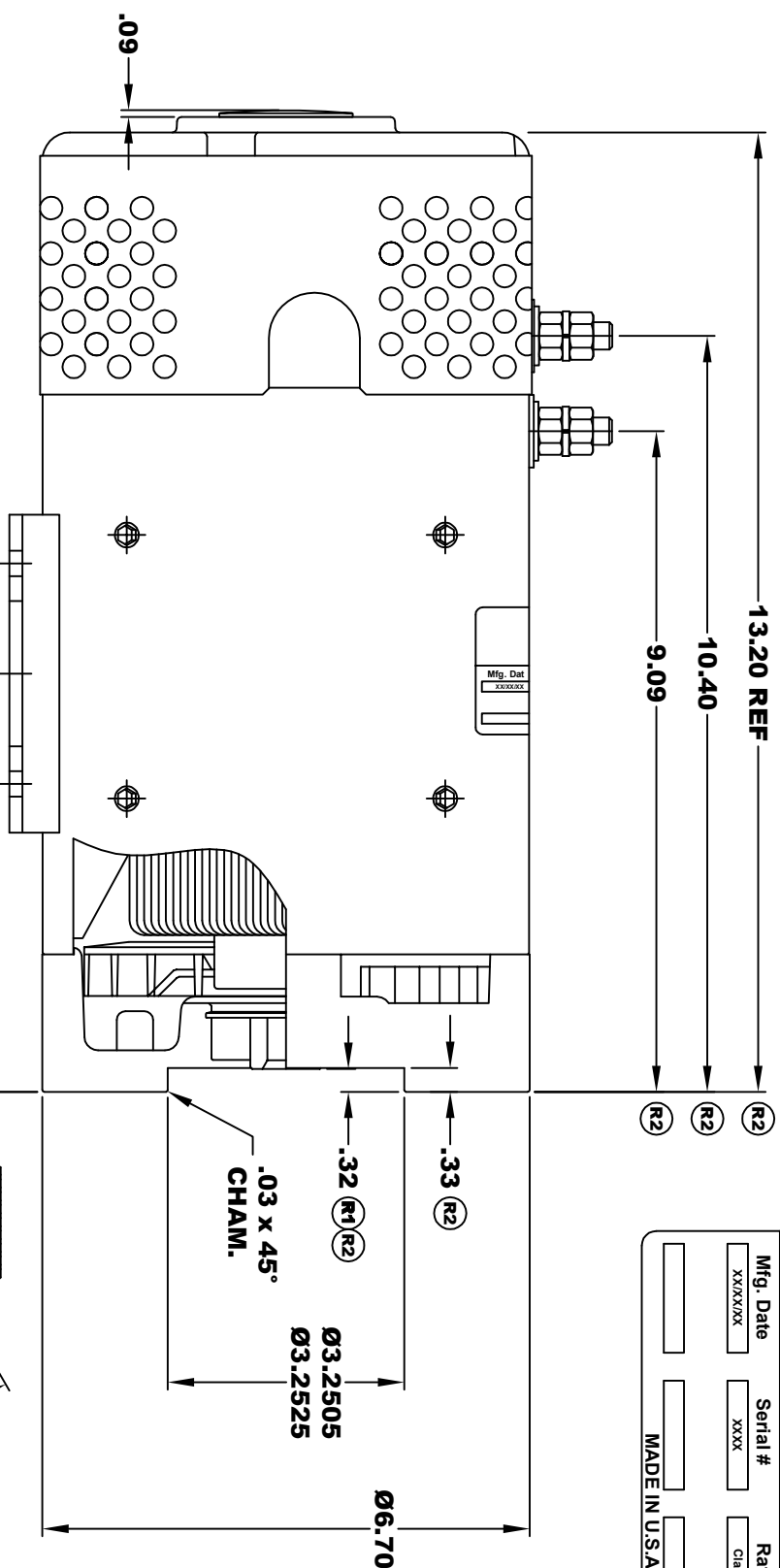


**D&D MOTOR SYSTEMS INC.**  
SYRACUSE N.Y.

Model # ES-73-26

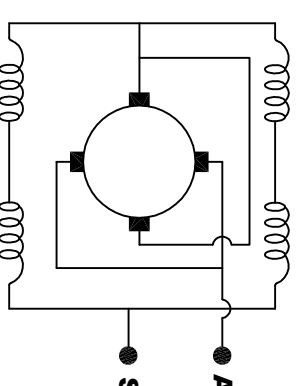
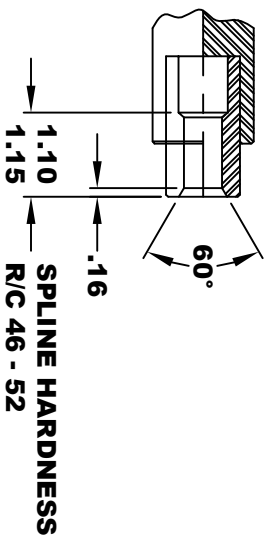
Mfg. Date	Serial #	Rating	Voltage
XXXXXX	XXXX	Class H	XXXX
MADE IN U.S.A.			

**TORQUE SPECIFICATION FOR  
POWER CABLE SECURING TOP NUTS**  
3/8 - 16 UNC - 140 IN / LBS MAX



**INTERNAL INVOLUTE SPLINE SPECIFICATION  
FLAT ROOT SIDE FIT (PER A.N.S.I. B92.1 CLASS 5)**

NO. OF TEETH	9
SPLINE PITCH	16 / 32
PRESSURE ANGLE	30°
BASE Ø	.4871 REF
PITCH Ø	.5625 REF
MAJOR Ø	.651
FORM Ø	.629
MINOR Ø	.509 - .514



**MOTOR WEIGHT: 66 LBS**  
CLASS "H" INSULATION  
PERFORMANCE SPEC: 26

**MOTOR WIRING CONNECTIONS:**  
CCW ROTATION DRIVE END  
CONNECT ONE POWER CABLE TO TERMINAL A  
CONNECT THE OTHER POWER CABLE TO TERMINAL S

**CIRCULAR SPACE WIDTH**

MAX ACTUAL	.1008
MIN EFFECTIVE	.0982
MAX DIMENSION BETWEEN TWO PINS	.3972
PIN Ø	.1080

⊙	.010	A
⊔	.010	B

THIS PRINT IS THE PROPERTY OF D&D MOTOR SYSTEMS INC.

DO NOT SCALE

WORK TO DIMENSIONS

TOLERANCES UNLESS OTHERWISE SPECIFIED ARE AS FOLLOWS

.XX	.01
.XXX	.005
.XX ROUGH CASTING	.03
HOLES	-.001 / +.006
ANGLES	0.30"

**D & D MOTOR SYSTEMS INC**

**MOTOR OUTLINE**

SIZE	DRAWN DATE	RELEASE DATE	DWG NO. / PART NO.	REV
B	12-9-05		ES-73-26	R4
SCALE	STF	DRAWN BY	MJG	REV DATE
				8-9-18