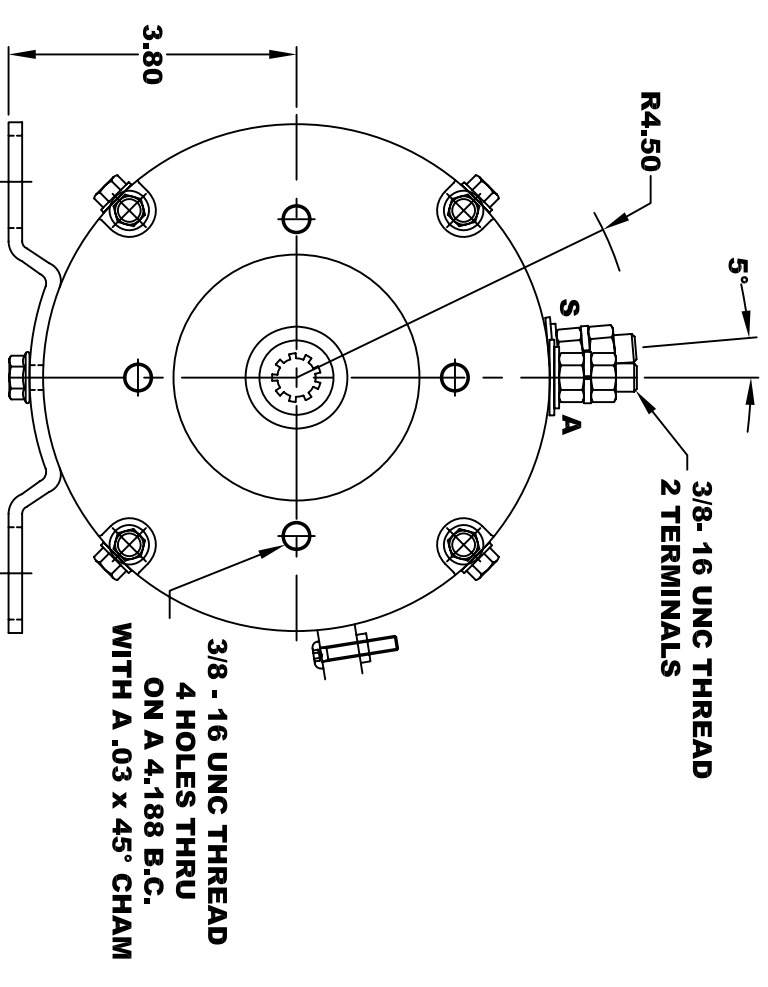
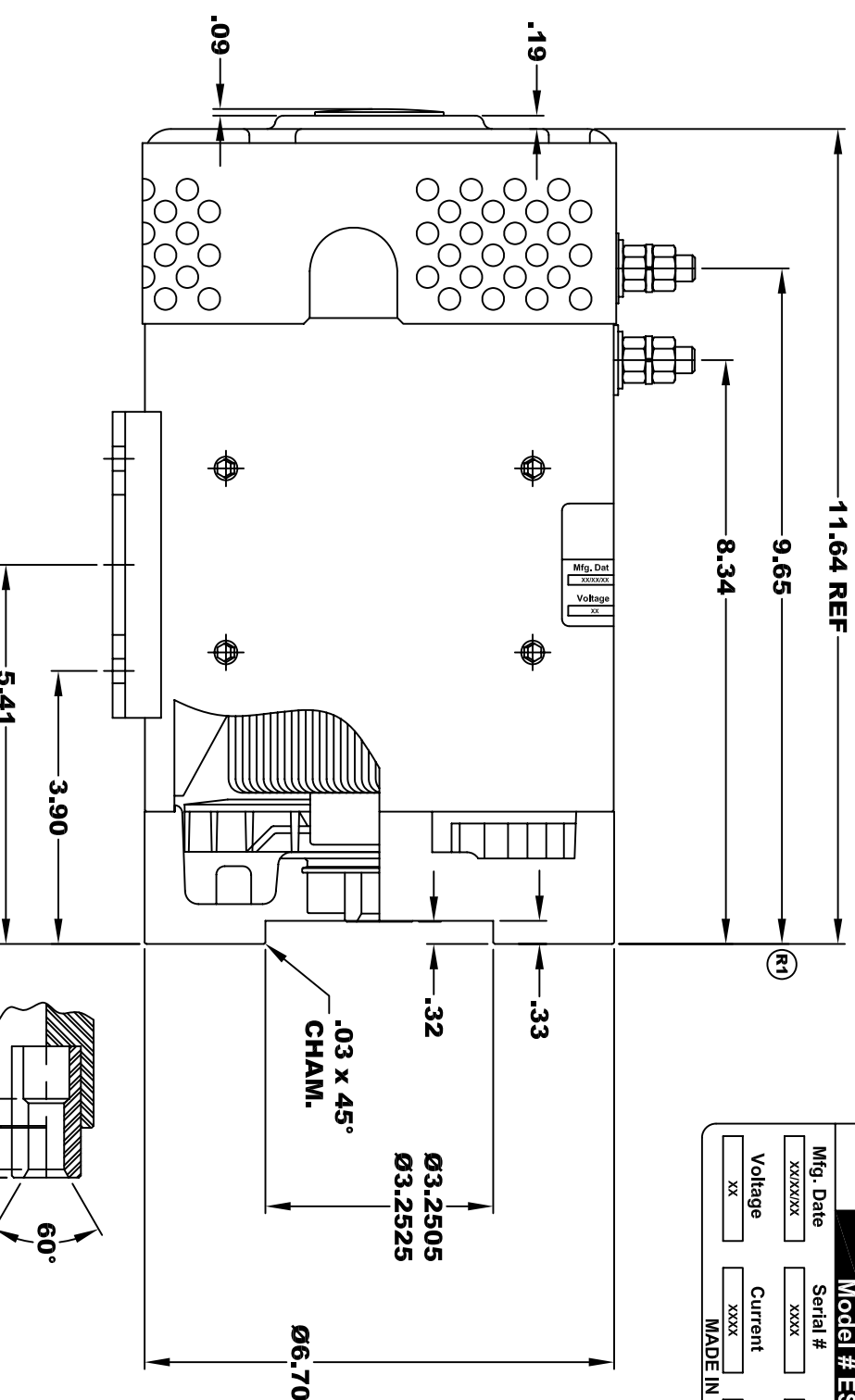


**D&D MOTOR SYSTEMS INC.**  
**SYRACUSE N.Y.**

**Model # ES-74A-41**

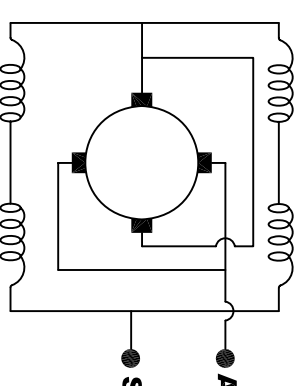
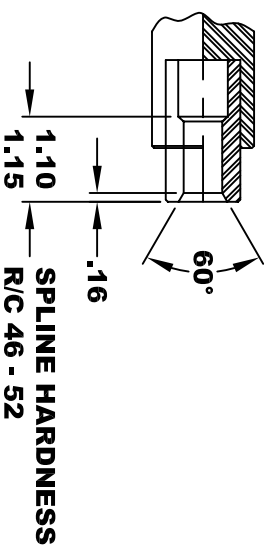
Mfg. Date	Serial #	Rating	Duty
xxxx/xx	xxxx	CLASS -H	S2-60 MIN
Voltage	Current	R.P.M.	H.P.
xx	xxxx	xxxx	xx
MADE IN U.S.A.			

**TORQUE SPECIFICATION FOR  
 POWER CABLE SECURING TOP NUTS**  
 3/8 - 16 UNC - 140 IN / LBS MAX



**INTERNAL INVOLUTE SPLINE SPECIFICATION**  
 FLAT ROOT SIDE FIT (PER A.N.S.I. B92.1 CLASS 5)

- NO. OF TEETH \_\_\_\_\_ 9
- SPLINE PITCH \_\_\_\_\_ 16 / 32
- PRESSURE ANGLE \_\_\_\_\_ 30°
- BASE Ø \_\_\_\_\_ .4871 REF
- PITCH Ø \_\_\_\_\_ .5625 REF
- MAJOR Ø \_\_\_\_\_ .651
- FORM Ø \_\_\_\_\_ .629
- MINOR Ø \_\_\_\_\_ .509 - .514



**ELECTRICAL WIRING DIAGRAM**

**MOTOR WEIGHT: 60 LBS**  
**CLASS "H" INSULATION**  
**PERFORMANCE SPEC: 41**

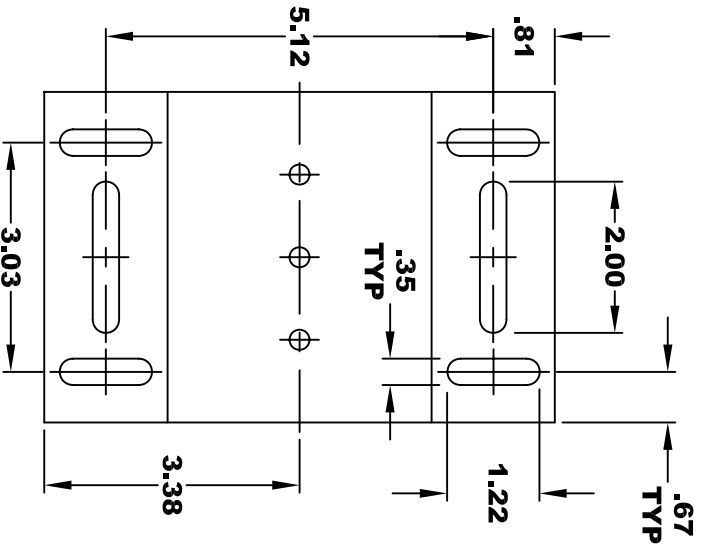
**MOTOR WIRING CONNECTIONS:**  
**CW ROTATION DRIVE END**  
**CONNECT ONE POWER CABLE TO TERMINAL A**  
**CONNECT THE OTHER POWER CABLE TO TERMINAL S**

**D & D MOTOR SYSTEMS INC**

**MOTOR OUTLINE**

THIS PRINT IS THE PROPERTY OF D&D MOTOR SYSTEMS INC.  
 DO NOT SCALE  
 WORK TO DIMENSIONS  
 TOLERANCES UNLESS OTHERWISE SPECIFIED ARE AS FOLLOWS  
 .XX \_\_\_\_\_ .01  
 .XXX \_\_\_\_\_ .005  
 .XX ROUGH CASTING \_\_\_\_\_ .03  
 HOLES \_\_\_\_\_ -.001 / +.006  
 ANGLES \_\_\_\_\_ 0°30"

SIZE	DRAWN DATE	RELEASE DATE	DWG NO. / PART NO.	REV
B	4-7-15		ES-74A-41	R1
SCALE	STF	DRAWN BY	MJG	REV DATE
				2-18-16



- CIRCULAR SPACE WIDTH**
- MAX ACTUAL \_\_\_\_\_ .1008
- MIN EFFECTIVE \_\_\_\_\_ .0982
- MAX DIMENSION BETWEEN TWO PINS \_\_\_\_\_ .3972
- PIN Ø \_\_\_\_\_ .1080

⊙	.010	A
⊙	.010	B