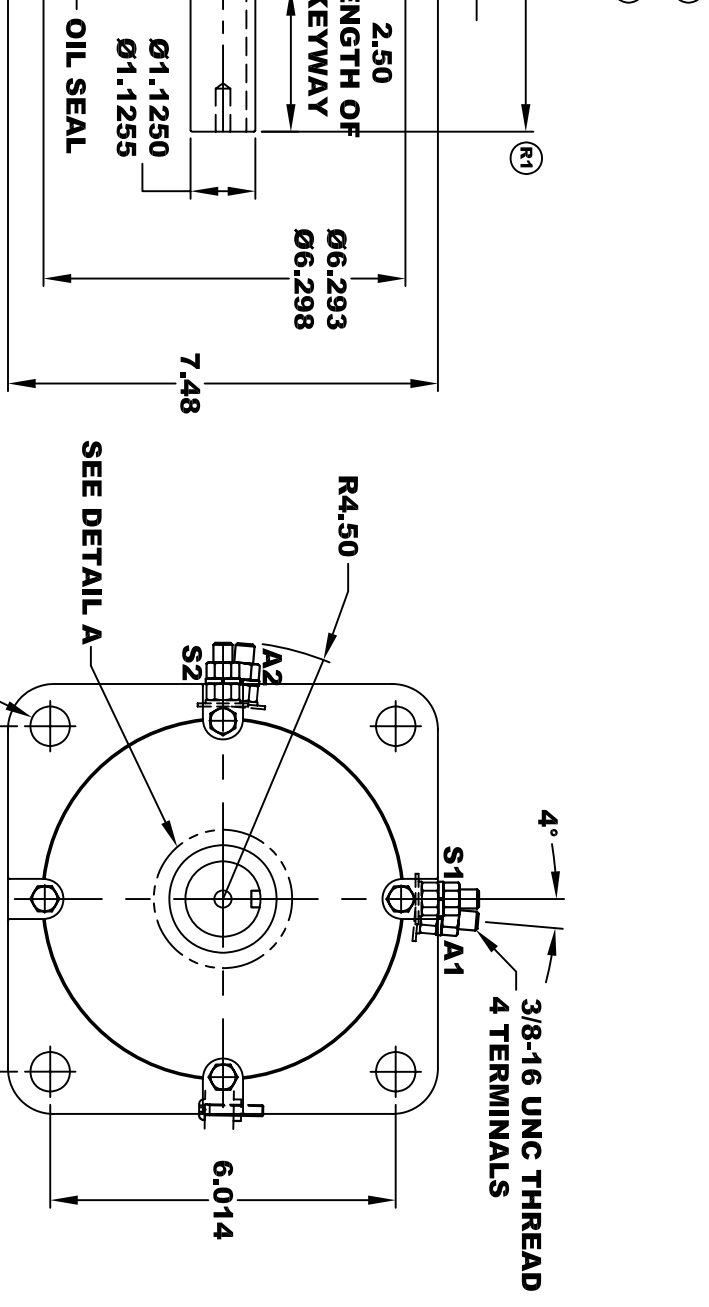
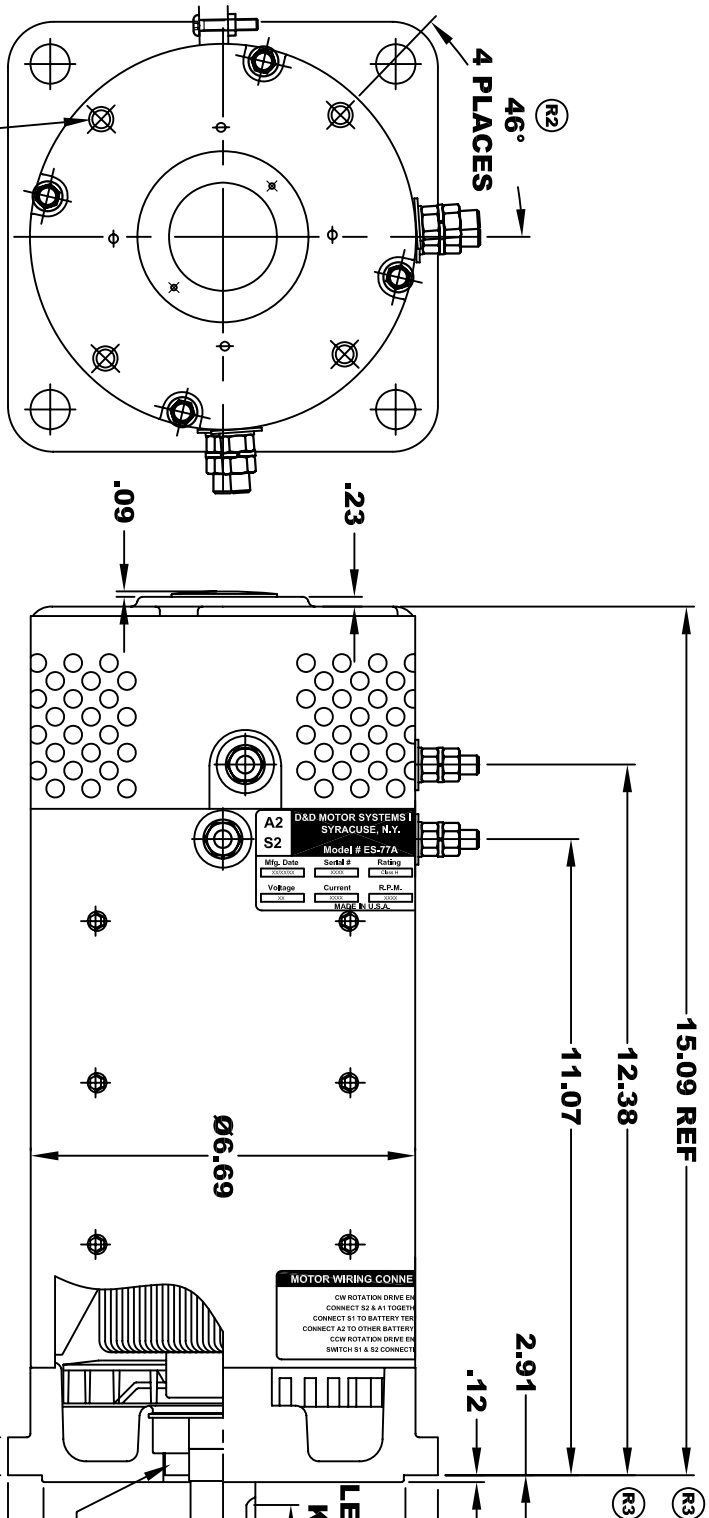


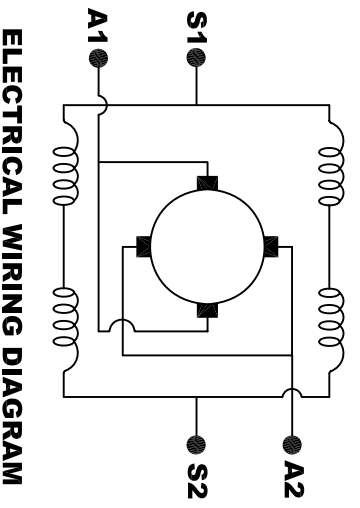
D&D MOTOR SYSTEMS INC.			
A2	A1		
S2	S1		
SYRACUSE N.Y.			
Model # ES-77A			
Mfg. Date	Serial #	Rating	Duty
XXXXXX	XXXX	CLASS -H-	S2-60 MIN
Voltage	Current	R.P.M.	H.P.
XX	XXXX	XXXX	XX
MADE IN U.S.A.			

**TORQUE SPECIFICATION FOR
POWER CABLE SECURING TOP NUTS
3/8-16 UNC - 140 IN / LBS MAX**



**Ø 3/8 - 16 UNC THREAD
TAPPED THRU
.03-.05 x 45° CHAMFER
4 PLACES, ON A Ø5.875 B. C.**

**5/16 - 18 UNC THREAD
V .75
DETAIL A**



**MOTOR WIRING CONNECTIONS:
CW ROTATION DRIVE END
CONNECT S2 & A1 TOGETHER
CONNECT S1 TO BATTERY TERMINAL
CCW ROTATION DRIVE END
CONNECT A2 TO OTHER BATTERY TERMINAL
CONNECT S1 & S2 CONNECTIONS**

**MOTOR WEIGHT: 82 LBS
CLASS "H" INSULATION
PERFORMANCE SPEC: 16**

THIS PRINT IS THE PROPERTY OF D&D MOTOR SYSTEMS INC.
DO NOT SCALE
WORK TO DIMENSIONS
TOLERANCES UNLESS OTHERWISE SPECIFIED ARE AS FOLLOWS
.XX .01
.XXX .005
.XX ROUGH CASTING .03
HOLES -.001 / +.006
ANGLES 0°30"

D & D MOTOR SYSTEMS INC				
MOTOR OUTLINE				
SIZE	DRAWN DATE	RELEASE DATE	DWG NO. / PART NO.	REV
B	8-18-03		ES-77A	R3
SCALE	STF	DRAWN BY	MJG	REV DATE
				5-26-04