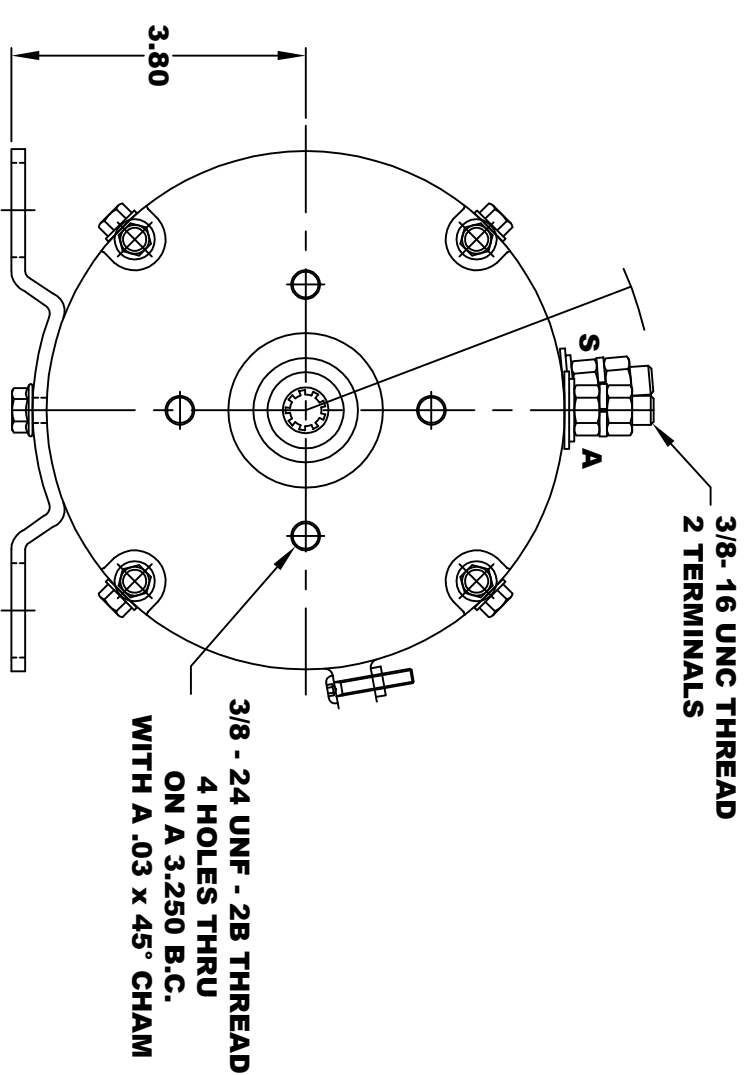
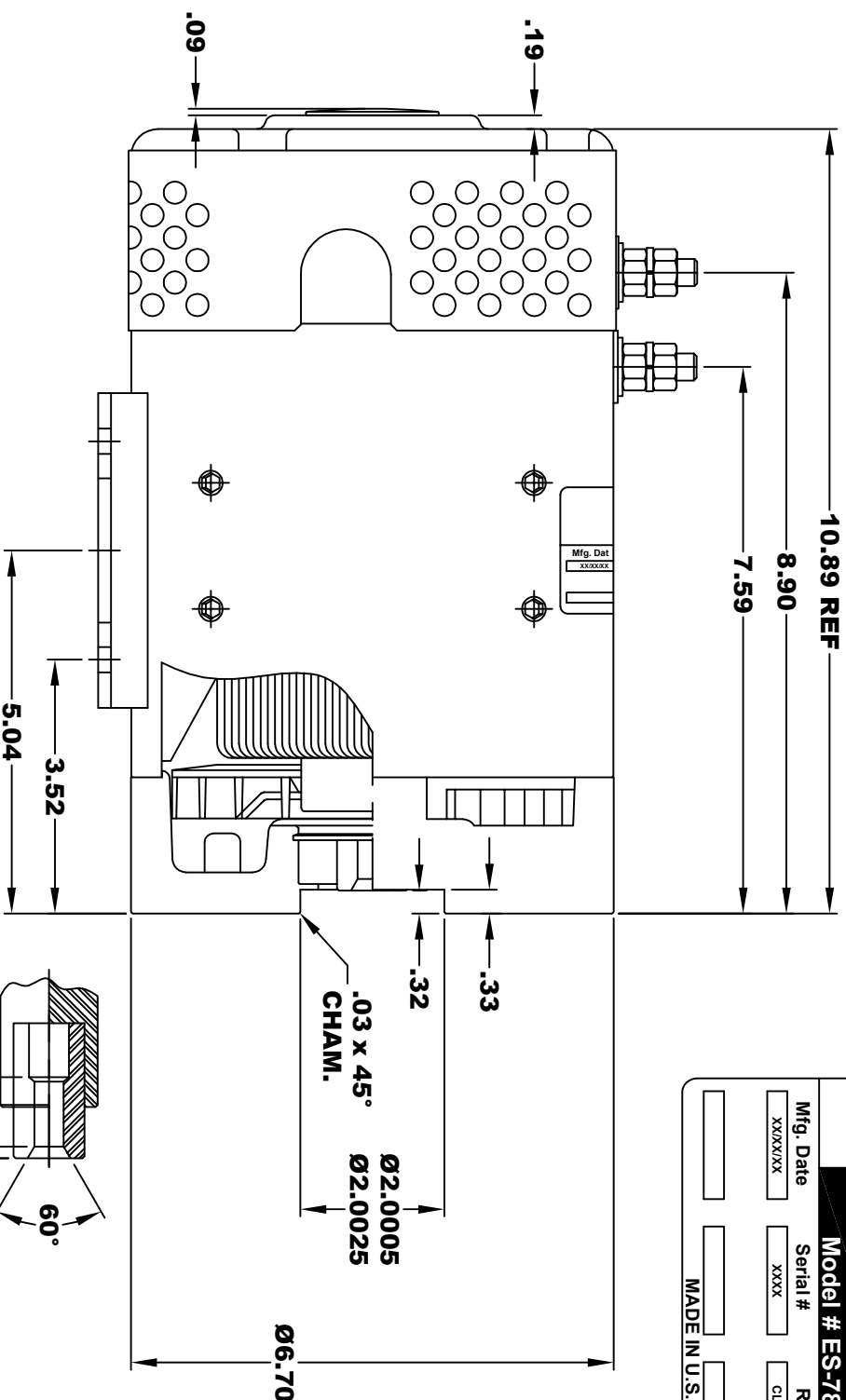


D&D MOTOR SYSTEMS INC.
SYRACUSE N.Y.

Model # ES-78A-42

Mfg. Date	Serial #	Rating	Voltage
XXXX/XX	XXXX	CLASS - H	24 / 36 / 48
MADE IN U.S.A.			

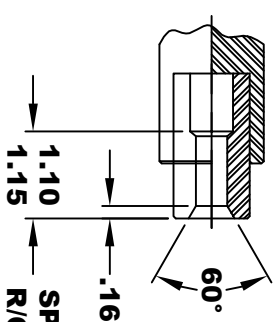
**TORQUE SPECIFICATION FOR
POWER CABLE SECURING TOP NUTS**
3/8 - 16 UNC - 140 IN / LBS MAX



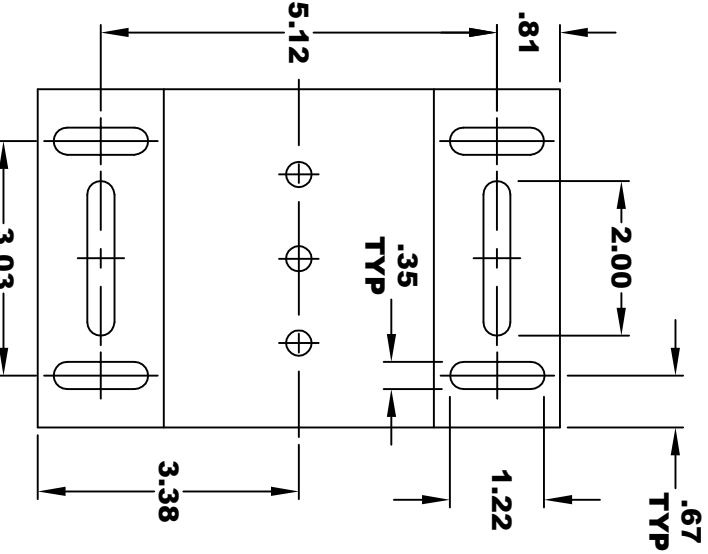
**INTERNAL INVOLUTE SPLINE SPECIFICATION
FLAT ROOT SIDE FIT (PER A.N.S.I. B92.1 CLASS 5)
(SEA CODE - AA)**

NO. OF TEETH _____ 9
SPLINE PITCH _____ 20 / 40
PRESSURE ANGLE _____ 30°
BASE Ø _____ .3897 REF
PITCH Ø _____ .4500 REF
MAJOR Ø _____ .522
FORM Ø _____ .504
MINOR Ø _____ .408

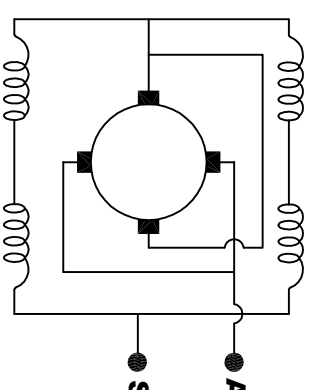
⊙	.010	A
⊕	.010	B



SPLINE HARDNESS
R/C 46 - 52



CIRCULAR SPACE WIDTH
MAX ACTUAL _____ .0811
MIN EFFECTIVE _____ .0982
MAX DIMENSION BETWEEN
TWO PINS _____ .3190
PIN Ø _____ .XXX



ELECTRICAL WIRING DIAGRAM

MOTOR WIRING CONNECTIONS:
CW ROTATION DRIVE END
CONNECT ONE POWER CABLE TO TERMINAL A
CONNECT THE OTHER POWER CABLE TO TERMINAL S

MOTOR WEIGHT: 53 LBS
CLASS "H" INSULATION
PERFORMANCE SPEC: 42

THIS PRINT IS THE PROPERTY OF D&D MOTOR SYSTEMS INC.

DO NOT SCALE

WORK TO DIMENSIONS

TOLERANCES UNLESS OTHERWISE SPECIFIED ARE AS FOLLOWS

.XX	.01
.XXX	.005
.XX ROUGH CASTING	.03
HOLES	-.001 / +.006
ANGLES	0.30"

D & D MOTOR SYSTEMS INC

MOTOR OUTLINE

SIZE	DRAWN DATE	RELEASE DATE	DWG NO. / PART NO.	REV
B	8-28-18		ES-78A-42	
SCALE	STF	DRAWN BY	MJG	REV DATE