

**A2**  
**S2**

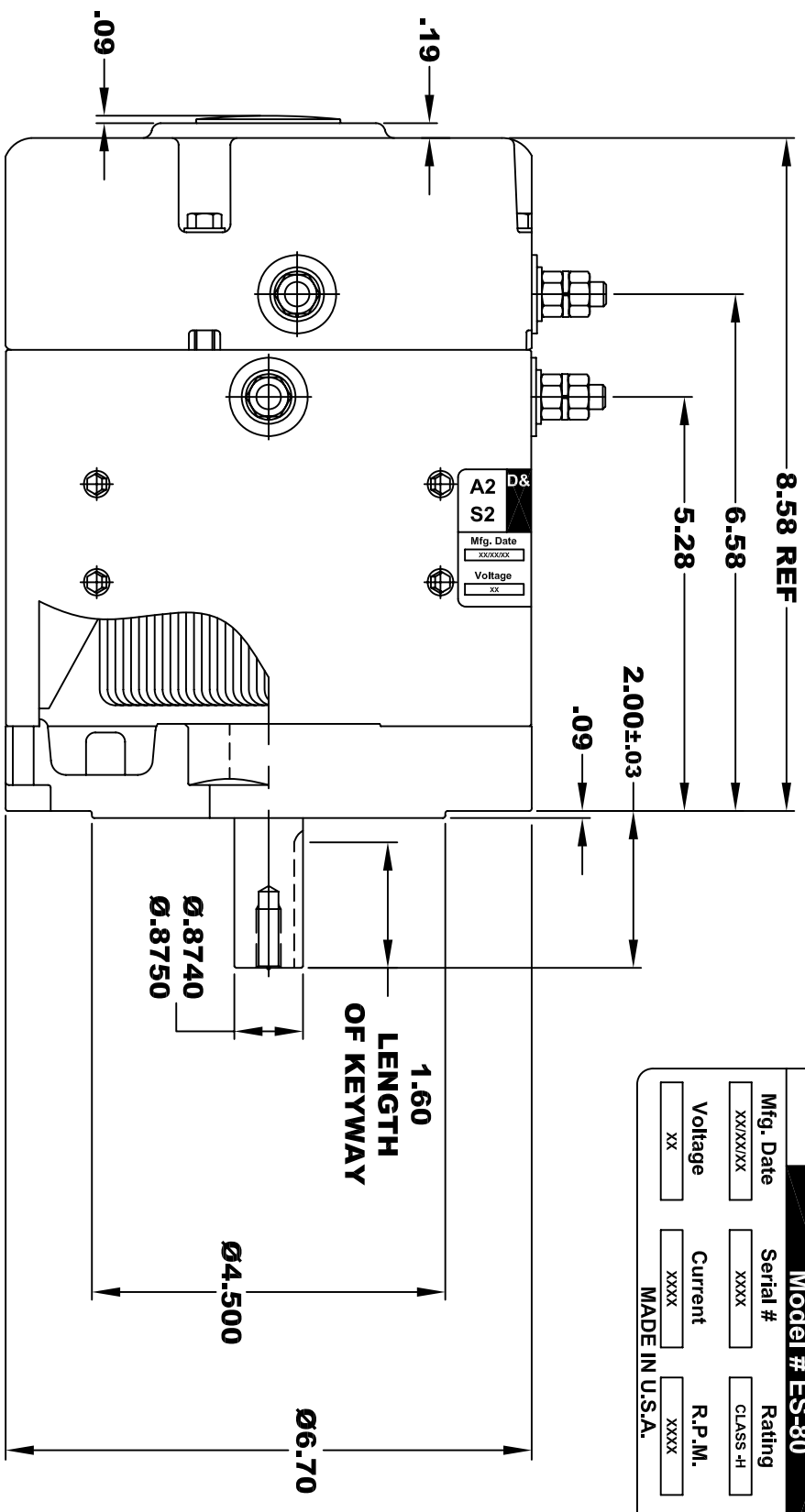
**D&D MOTOR SYSTEMS INC.**  
**SYRACUSE N.Y.**

**A1**  
**S1**

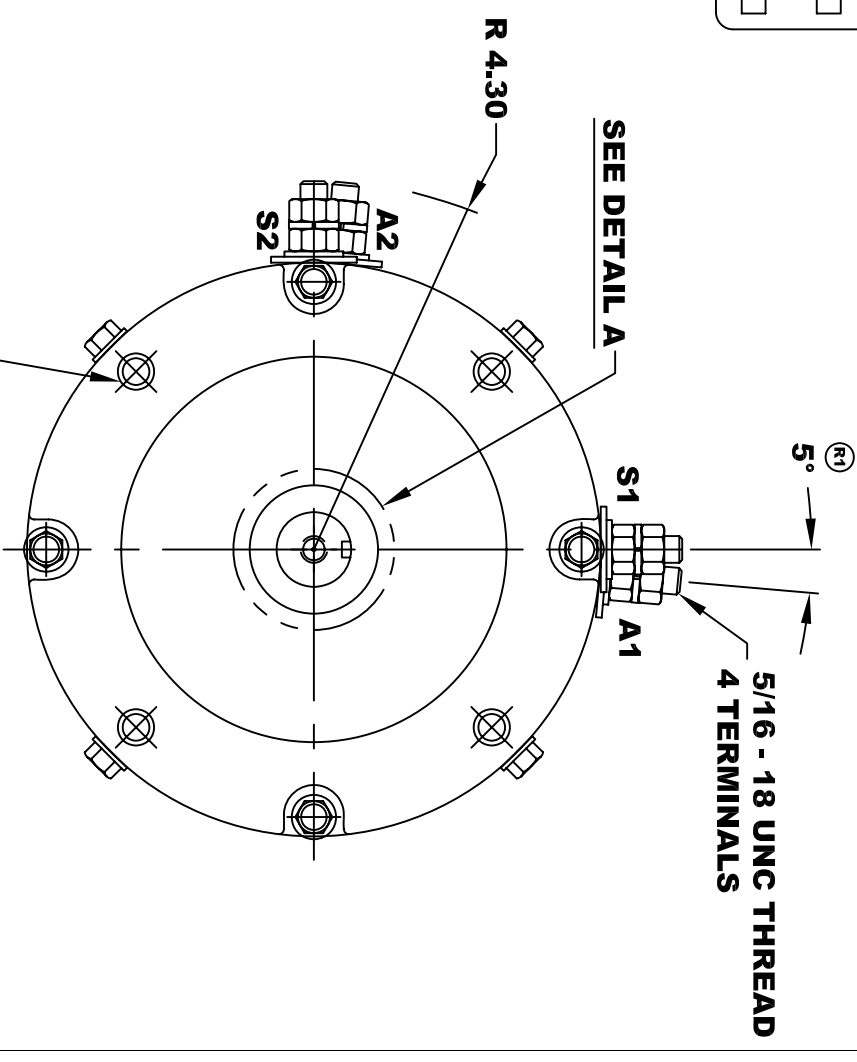
**Model # ES-80**

Mfg. Date	Serial #	Rating	Duty
XXXXXX	XXXX	CLASS -H-	S2:XX MIN
Voltage	Current	R.P.M.	H.P.
XX	XXXX	XXXX	XX
MADE IN U.S.A.			

**TORQUE SPECIFICATION FOR  
POWER CABLE SECURING TOP NUTS**  
**5/16-18 UNC - 110 IN / LBS MAX**



**3/8 - 16 UNC THREAD**  
**.65 MINIMUM**  
**.03-.05 x 45° CHAMFER**  
**4 PLACES, ON A Ø5.875 B. C.**



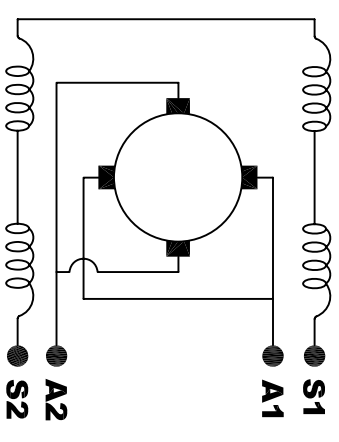
**MOTOR WEIGHT: 38 LBS**  
**CLASS "H" INSULATION**  
**PERFORMANCE SPEC: 36**

**D & D MOTOR SYSTEMS INC**

**MOTOR OUTLINE**

SIZE	DRAWN DATE	RELEASE DATE	DWG NO. / PART NO.	REV
B	8-1-03		ES-80	R2
SCALE	STF	DRAWN BY	MJG	REV DATE
				11-13-03

**MOTOR WIRING CONNECTIONS:**  
**CW ROTATION DRIVE END**  
**CONNECT S2 & A1 TOGETHER**  
**CONNECT S1 TO BATTERY TERMINAL**  
**CCW ROTATION DRIVE END**  
**CONNECT A2 TO OTHER BATTERY TERMINAL**  
**SWITCH S1 & S2 CONNECTIONS**



THIS PRINT IS THE PROPERTY OF D&D MOTOR SYSTEMS INC.  
DO NOT SCALE  
WORK TO DIMENSIONS  
TOLERANCES UNLESS OTHERWISE SPECIFIED ARE AS FOLLOWS  
.XX \_\_\_\_\_ .01  
.XXX \_\_\_\_\_ .005  
.XX ROUGH CASTING \_\_\_\_\_ .03  
HOLES \_\_\_\_\_ -.001 / +.006  
ANGLES \_\_\_\_\_ 0°30"

**ELECTRICAL WIRING DIAGRAM**