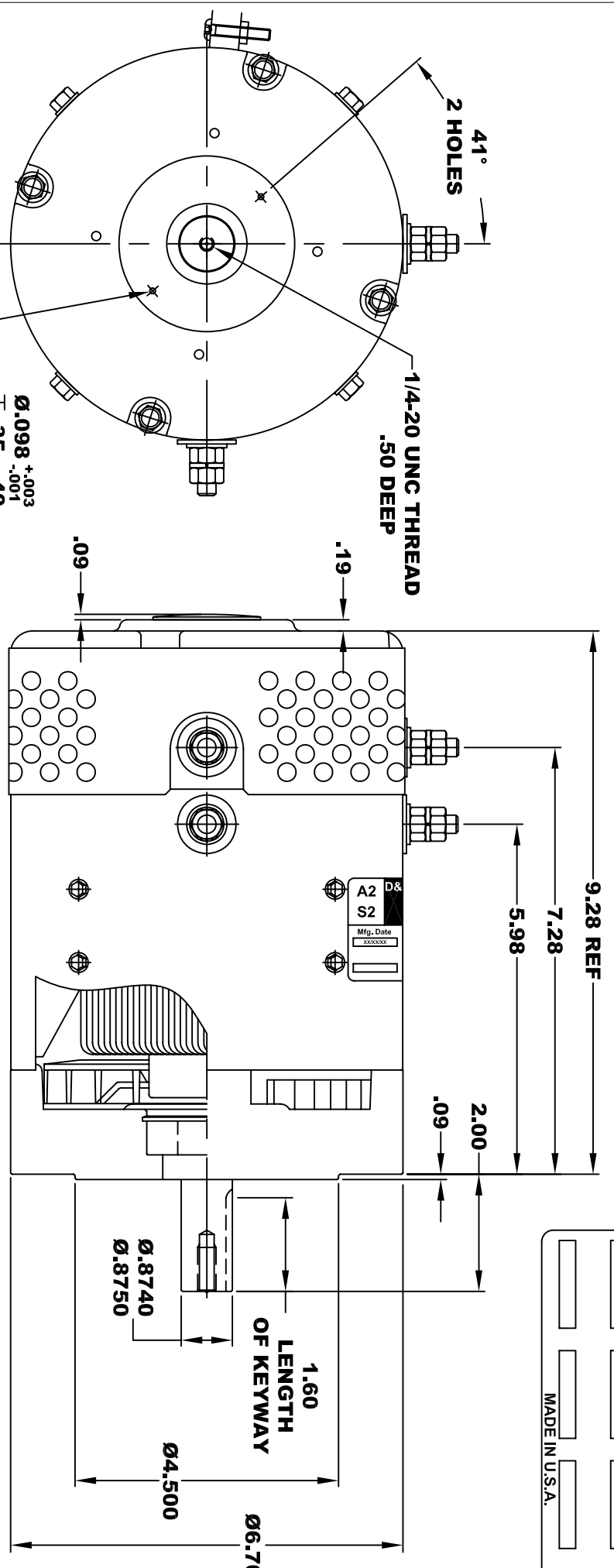
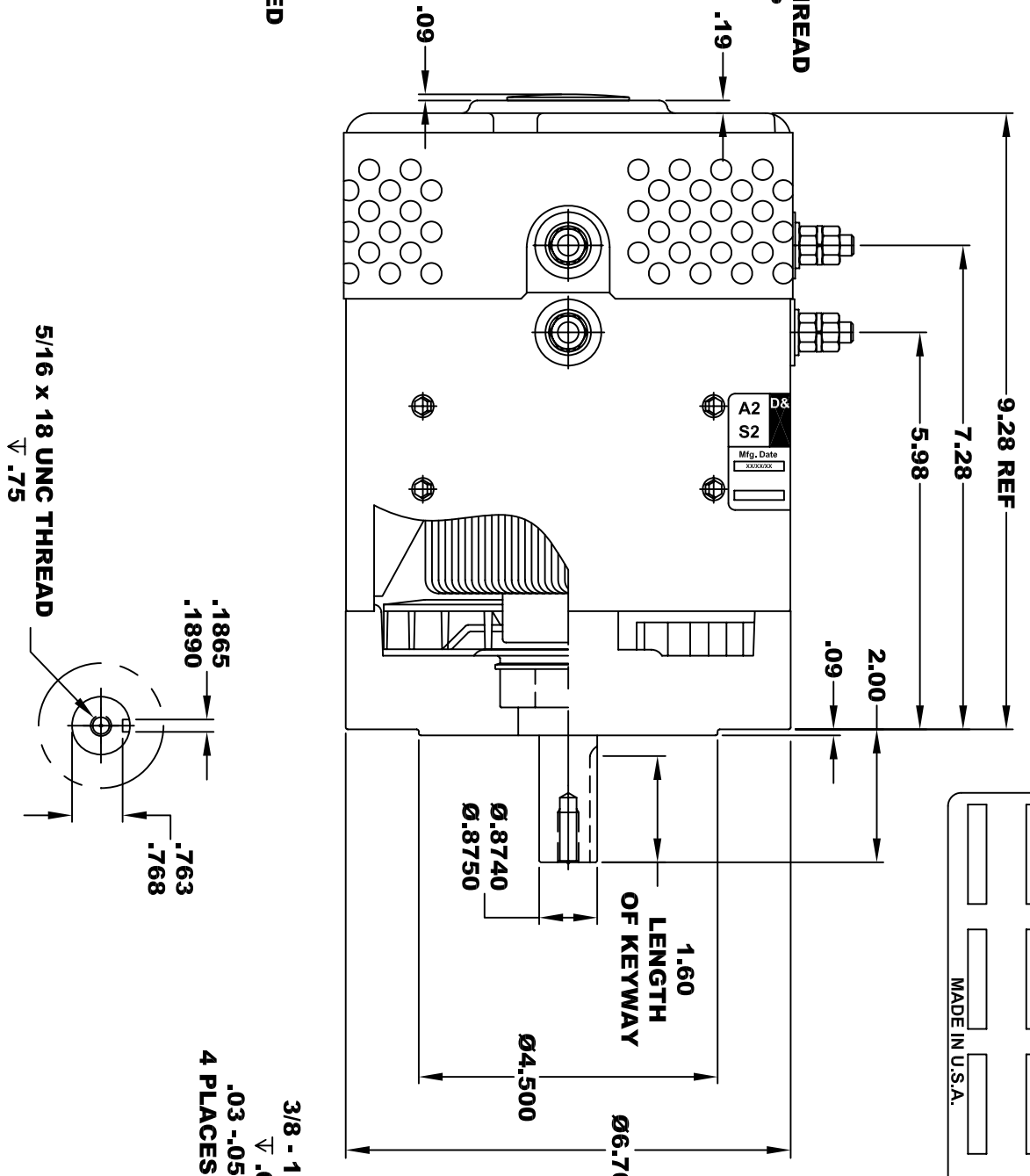


D&D MOTOR SYSTEMS INC.			
SYRACUSE N.Y.			
A2	S2	A1	S1
Model # ES-80D-92			
Mfg. Date XXXX/XX	Serial # XXXX	Rating CLASS -I	Voltage XX
MADE IN U.S.A.			

**TORQUE SPECIFICATION FOR
POWER CABLE SECURING TOP NUTS
5/16-18 UNC - 110 IN / LBS MAX**

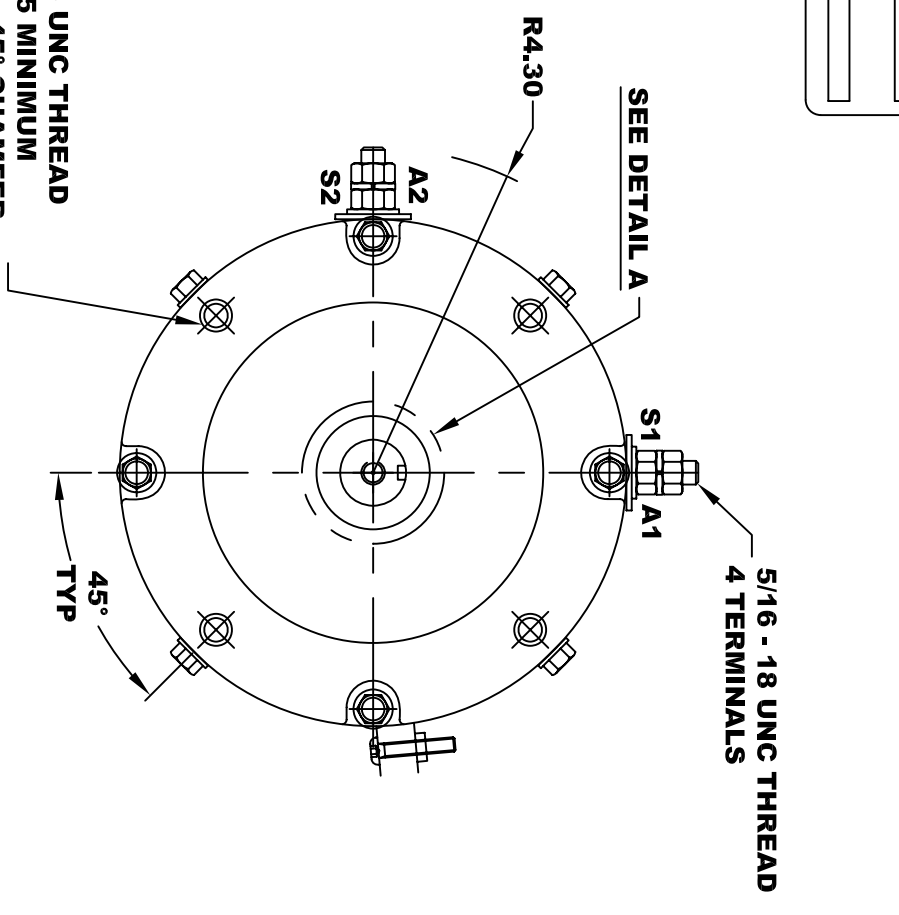


**Ø.098 +.003
-.001
▽.35 -.40
2 HOLES
EQUALLY SPACED
ON A 2.45 B.C.**

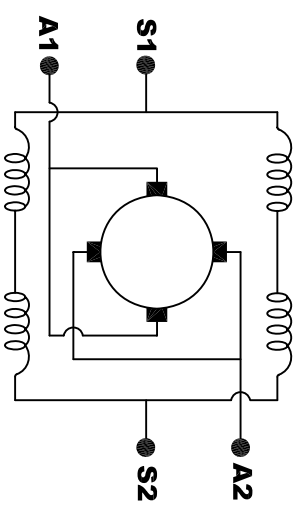


DETAIL A

**3/8 - 16 UNC THREAD
▽.65 MINIMUM
.03-.05 x 45° CHAMFER
4 PLACES, ON A Ø5.875 B. C.**



**MOTOR WEIGHT: 40 LBS
CLASS "H" INSULATION
PERFORMANCE SPEC: 92**



ELECTRICAL WIRING DIAGRAM

**MOTOR WIRING CONNECTIONS:
CW ROTATION DRIVE END
CONNECT S2 & A1 TOGETHER
CONNECT S1 TO OTHER BATTERY TERMINAL
CCW ROTATION DRIVE END
CONNECT A2 TO OTHER BATTERY TERMINAL
CONNECT S1 & S2 CONNECTIONS**

THIS PRINT IS THE PROPERTY OF D&D MOTOR SYSTEMS INC.
DO NOT SCALE
WORK TO DIMENSIONS
TOLERANCES UNLESS OTHERWISE SPECIFIED ARE AS FOLLOWS
.XX _____ .01
.XXX _____ .005
.XX ROUGH CASTING _____ .03
HOLES _____ -.001 / +.006
ANGLES _____ 0°30"

**D & D MOTOR SYSTEMS INC
MOTOR OUTLINE**

SIZE	DRAWN DATE	RELEASE DATE	DWG NO. / PART NO.	REV
B	6-9-16		ES-80D-92	
SCALE	STF	DRAWN BY	MJG	REV DATE