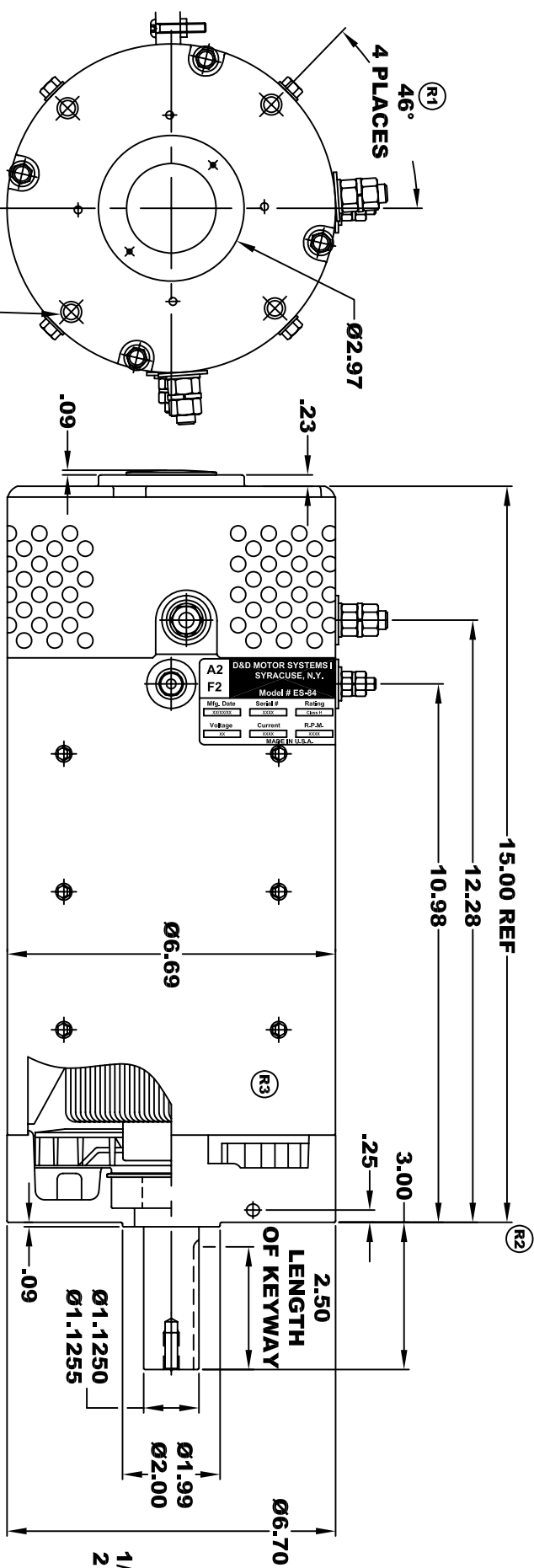
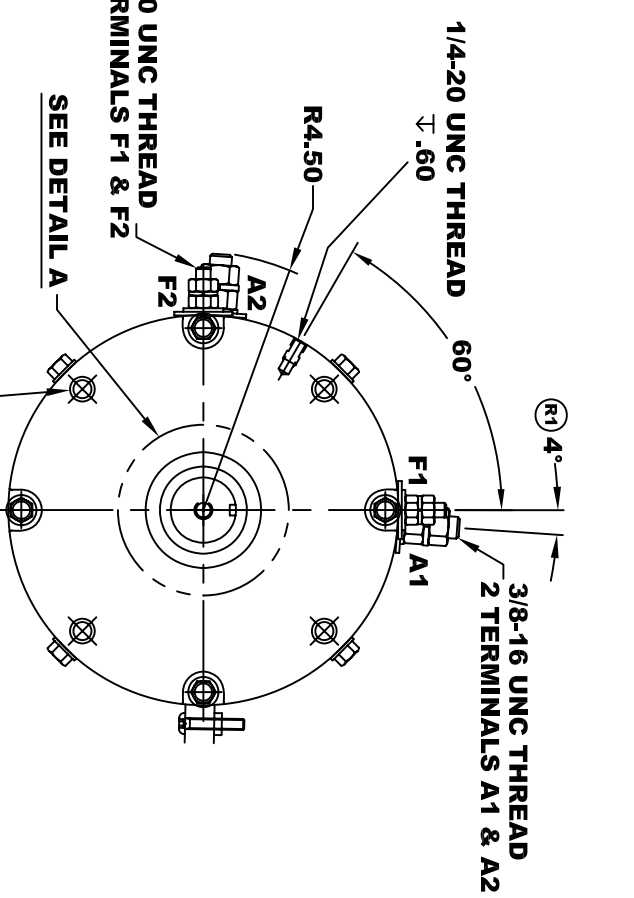


<b>D&amp;D MOTOR SYSTEMS INC.</b>			
SYRACUSE N.Y.			
<b>A2</b>	<b>Model # ES-84</b>		<b>A1</b>
<b>F2</b>	Serial #	Rating	Duty
	XXXX	CLASS-III	S2XX-MIN
Mfg. Date	XXXX	Current	R.P.M.
XXXXXX	XXXX	MADE IN U.S.A.	H.P.
Voltage	XX		XX

**TORQUE SPECIFICATION FOR  
POWER CABLE SECURING TOP NUTS**  
3/8-16 UNC ( A1 & A2 ) - 140 IN / LBS MAX  
1/4-20 UNC ( F1 & F2 ) - 50 IN / LBS MAX

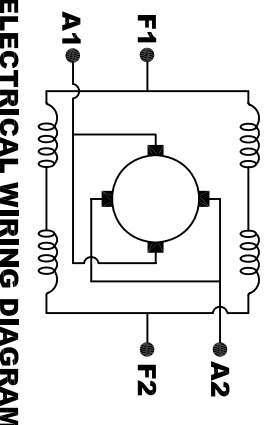


Ø 3/8 - 16 UNC THREAD  
TAPPED THRU  
.03-.05 x 45° CHAMFER  
4 PLACES, ON A Ø5.875 B. C.



Ø 3/8 - 16 UNC THREAD  
↑ .65 MINIMUM  
BREAK THRU PERMISSABLE  
.03-.05 x 45° CHAMFER  
4 PLACES, ON A Ø5.875 B. C.

**MOTOR WEIGHT: 83 LBS**  
**CLASS "H" INSULATION**  
**PERFORMANCE SPEC: 12**



**MOTOR WIRING CONNECTIONS:**  
**CW ROTATION DRIVE END**  
CONNECT A1 & F1 TO ONE BATTERY TERMINAL  
**CCW ROTATION DRIVE END**  
CONNECT A2 & F2 TO OTHER BATTERY TERMINAL  
SWITCH F1 & F2 CONNECTIONS

THIS PRINT IS THE PROPERTY OF D&D MOTOR SYSTEMS INC.  
DO NOT SCALE  
WORK TO DIMENSIONS  
TOLERANCES UNLESS OTHERWISE SPECIFIED ARE AS FOLLOWS  
.XX \_\_\_\_\_ .01  
.XXX \_\_\_\_\_ .005  
.XX ROUGH CASTING \_\_\_\_\_ .03  
HOLES \_\_\_\_\_ -.001 / +.006  
ANGLES \_\_\_\_\_ 0°30"

<b>D &amp; D MOTOR SYSTEMS INC</b>			
<b>MOTOR OUTLINE</b>			
SIZE	DRAWN DATE	RELEASE DATE	DWG NO. / PART NO.
B	10-1-03		ES-84
SCALE	STF	DRAWN BY	MJG
			REV DATE
			5-16-13
			REV
			R3