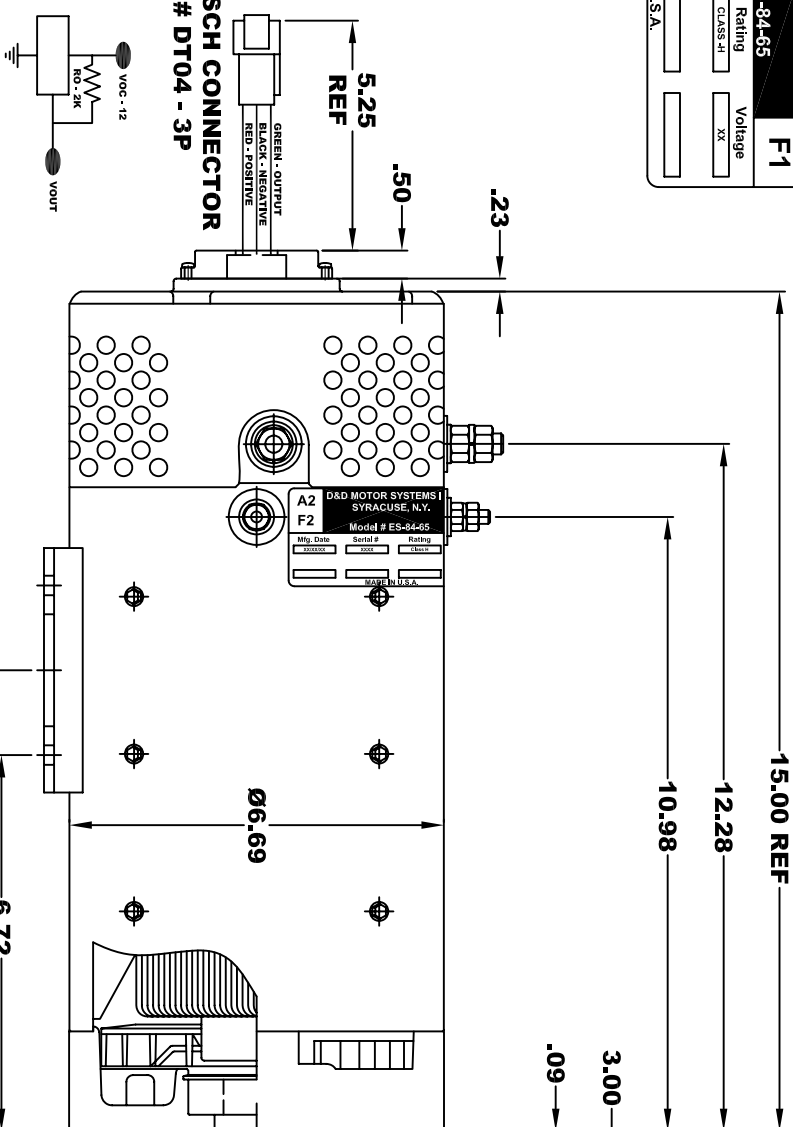
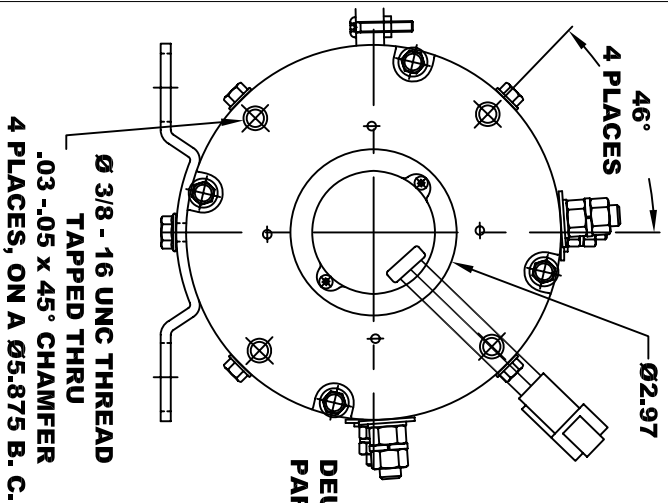
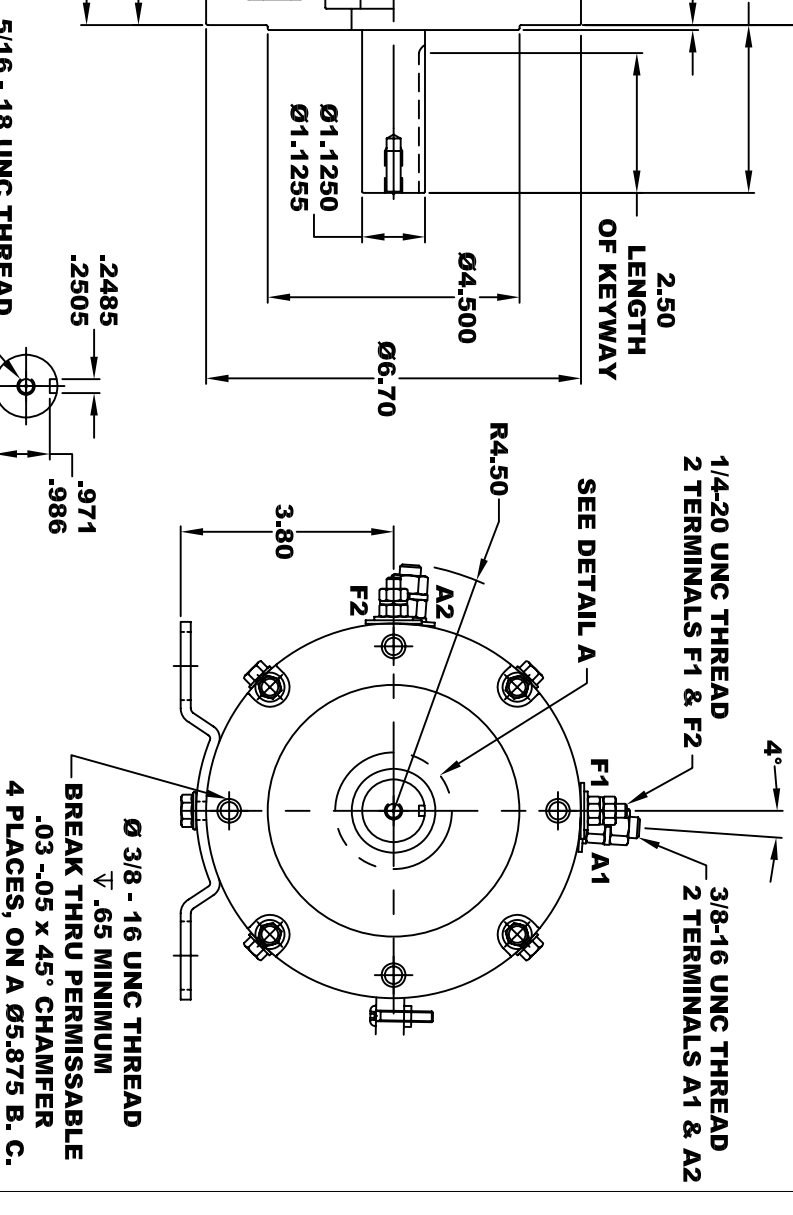


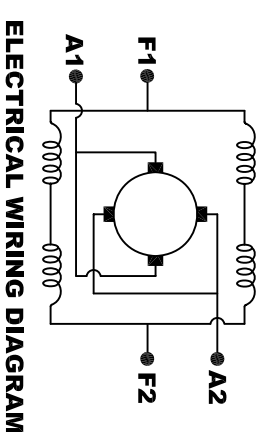
<b>A2</b>	<b>D&amp;D MOTOR SYSTEMS INC.</b>			<b>A1</b>
<b>F2</b>	<b>SYRACUSE N.Y.</b>			<b>F1</b>
Mfg. Date	Model # ES-84-65	Rating	Voltage	
XXXXXX	Serial #	CLASS -H	XX	
	XXXX			
		MADE IN U.S.A.		



**TORQUE SPECIFICATION FOR  
POWER CABLE SECURING TOP NUTS**  
3/8-16 UNC (A1 & A2) - 140 IN / LBS MAX  
1/4-20 UNC (F1 & F2) - 50 IN / LBS MAX



**SPEED SENSOR ELECTRICAL SPECIFICATION:**  
-4.5V TO 24V OPERATING VOLTAGE  
-20°C TO 85°C OPERATING TEMPERATURE  
-CURRENT SINKING UP TO 25mA  
-AN EXTERNAL OUTPUT PULL UP RESISTOR IS REQUIRED  
-SENSOR IS DESIGNED TO OPERATE WITH 4 N/S POLEPAIRS  
-THE OPERATIONAL DISTANCE BETWEEN THE MAGNET  
AND THE HOUSING, INCLUDING ANY RUNOUT  
SHOULD NOT EXCEED .030 INCHES



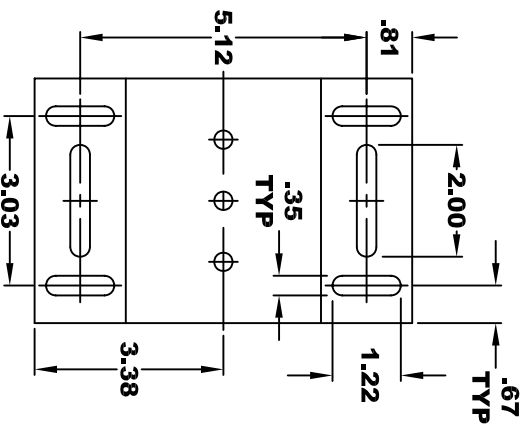
**MOTOR WIRING CONNECTIONS:**  
CW ROTATION DRIVE END  
CONNECT A1 & F1 TO ONE BATTERY TERMINAL  
CCW ROTATION DRIVE END  
CONNECT A2 & F2 TO OTHER BATTERY TERMINAL  
SWITCH F1 & F2 CONNECTIONS

**D & D MOTOR SYSTEMS INC**

**MOTOR OUTLINE**

THIS PRINT IS THE PROPERTY OF D&D MOTOR SYSTEMS INC.  
DO NOT SCALE  
WORK TO DIMENSIONS  
TOLERANCES UNLESS OTHERWISE SPECIFIED ARE AS FOLLOWS  
.XX \_\_\_\_\_ .01  
.XXX \_\_\_\_\_ .005  
.XX ROUGH CASTING \_\_\_\_\_ .03  
HOLES \_\_\_\_\_ -.001 / +.006  
ANGLES \_\_\_\_\_ 0°30"

SIZE	DRAWN DATE	RELEASE DATE	DWG NO. / PART NO.	REV
B	3-22-13		ES-84-65	
SCALE	STF	DRAWN BY	MJG	REV DATE



**MOTOR WEIGHT: 86 LBS**  
**CLASS "H" INSULATION**  
**PERFORMANCE SPEC: 65**