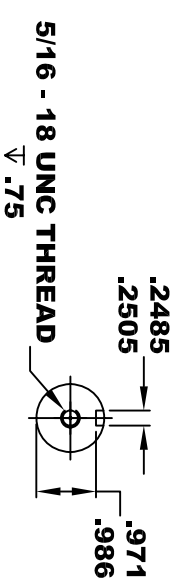
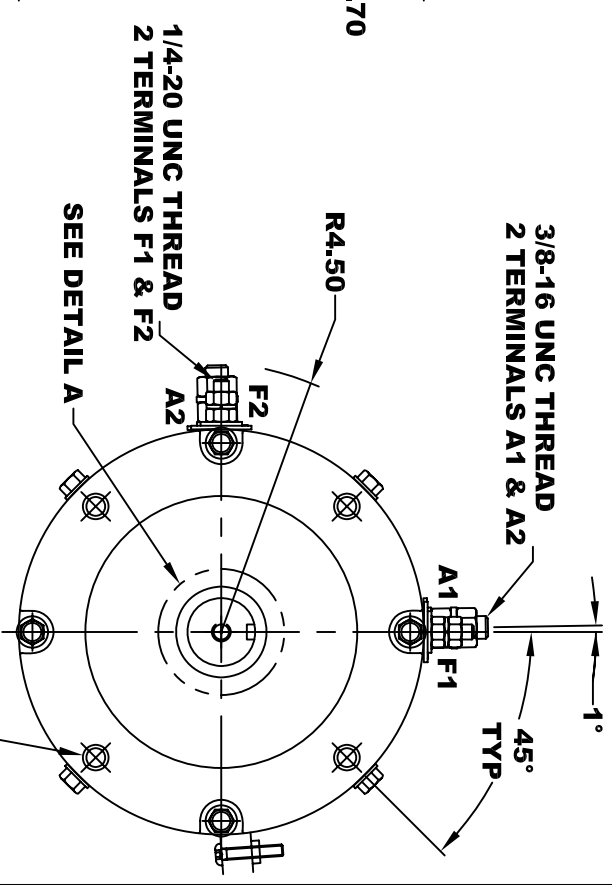
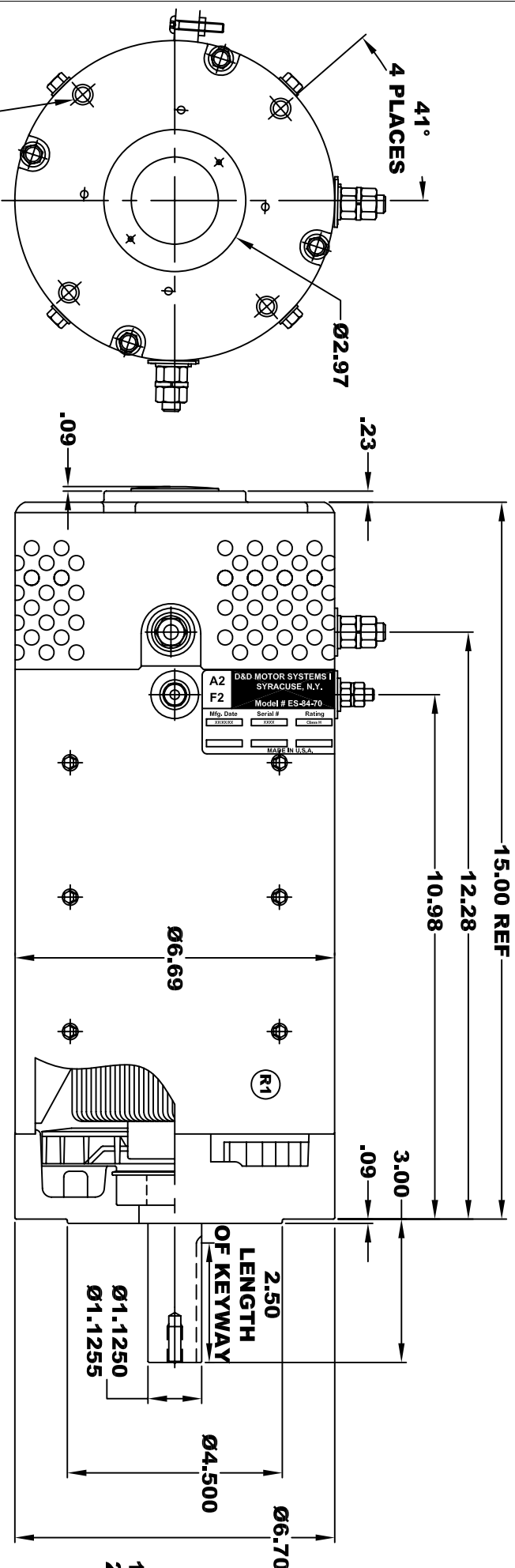


D&D MOTOR SYSTEMS INC.			
A2	SYRACUSE N.Y.		A1
F2	Model # ES-84-70		F1
Mfg. Date	Serial #	Rating	Voltage
XXXXXX	XXXX	CLASS #1	XX
		MADE IN U.S.A.	

**TORQUE SPECIFICATION FOR
POWER CABLE SECURING TOP NUTS**
3/8-16 UNC (A1 & A2) - 140 IN / LBS MAX
1/4-20 UNC (F1 & F2) - 50 IN / LBS MAX



Ø 3/8 - 16 UNC THREAD
▽ .65 MINIMUM
BREAK THRU PERMISSIBLE
.03 -.05 x 45° CHAMFER
4 PLACES, ON A Ø5.875 B. C.

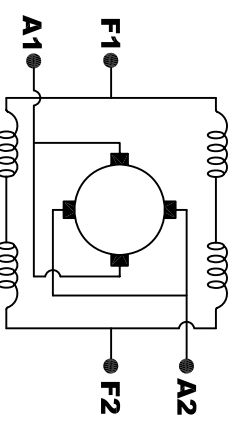
MOTOR WEIGHT: 83 LBS
CLASS "H" INSULATION
PERFORMANCE SPEC: 70

D & D MOTOR SYSTEMS INC

MOTOR OUTLINE

SIZE	DRAWN DATE	RELEASE DATE	DWG NO. / PART NO.	REV
B	12-22-06		ES-84-70	R1
SCALE	STF	DRAWN BY	MJG	REV DATE
				5-16-13

MOTOR WIRING CONNECTIONS:
CW ROTATION DRIVE END
CONNECT A1 & F1 TO ONE BATTERY TERMINAL
CCW ROTATION DRIVE END
SWITCH F1 & F2 CONNECTIONS



ELECTRICAL WIRING DIAGRAM

THIS PRINT IS THE PROPERTY OF D&D MOTOR SYSTEMS INC.
 DO NOT SCALE
 WORK TO DIMENSIONS
 TOLERANCES UNLESS OTHERWISE SPECIFIED ARE AS FOLLOWS
 .XX _____ .01
 .XXX _____ .005
 .XX ROUGH CASTING _____ .03
 HOLES _____ -.001 / +.006
 ANGLES _____ 0°30"