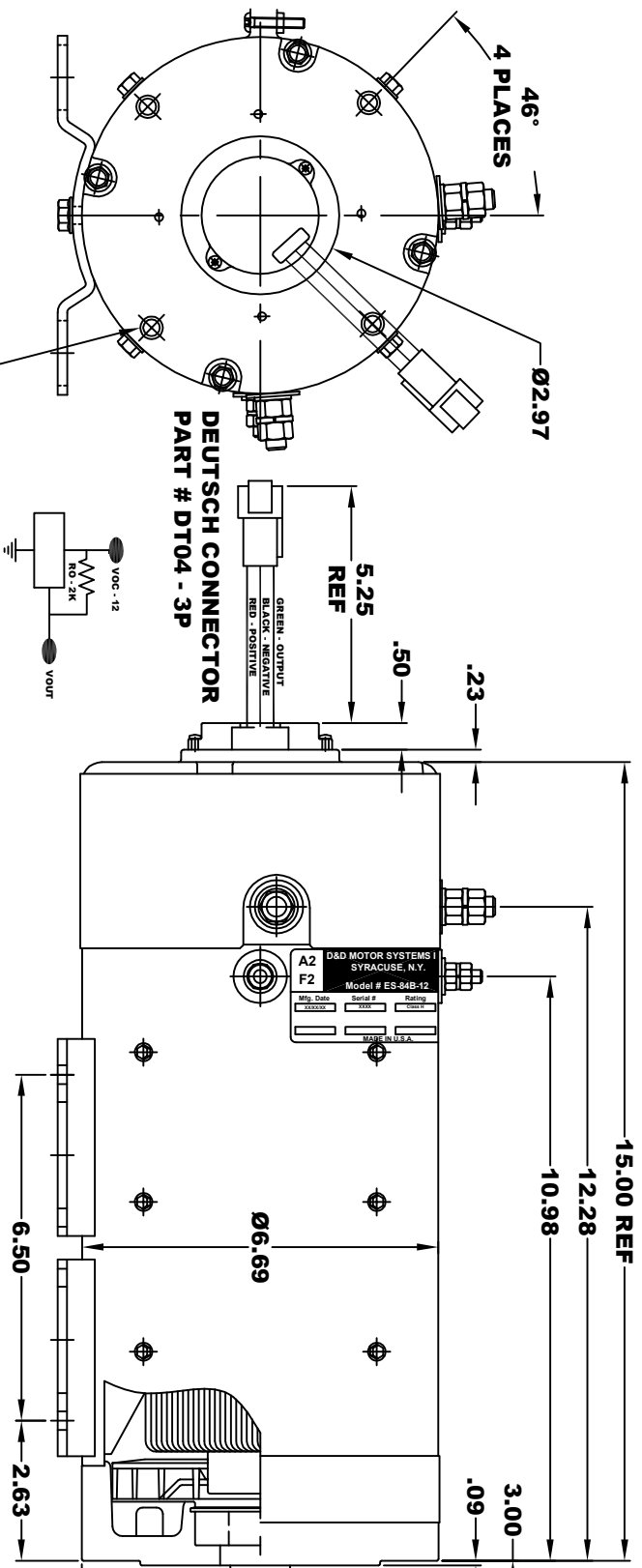


DRAFT

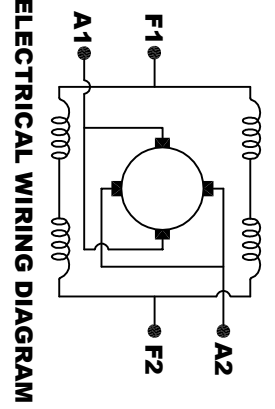
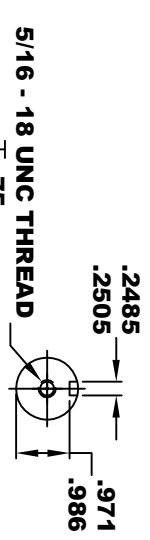
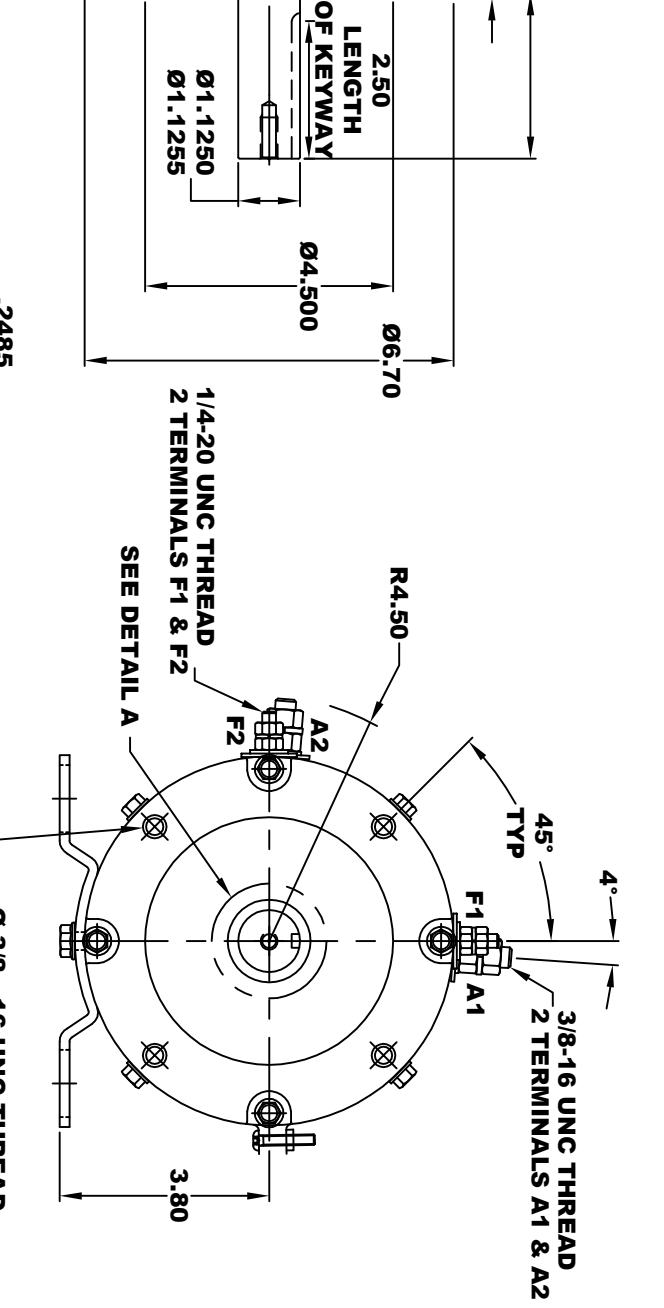
**TORQUE SPECIFICATION FOR
POWER CABLE SECURING TOP NUTS**
3/8-16 UNC (A1 & A2) - 140 IN / LBS MAX
1/4-20 UNC (F1 & F2) - 50 IN / LBS MAX

D&D MOTOR SYSTEMS INC. SYRACUSE N.Y.		A2		A1	
Model # ES-84B-12		F2		F1	
Mfg. Date	Serial #	Rating	Class	Voltage	
XXXXXX	XXXX	XX	H	XX	
MADE IN U.S.A.					

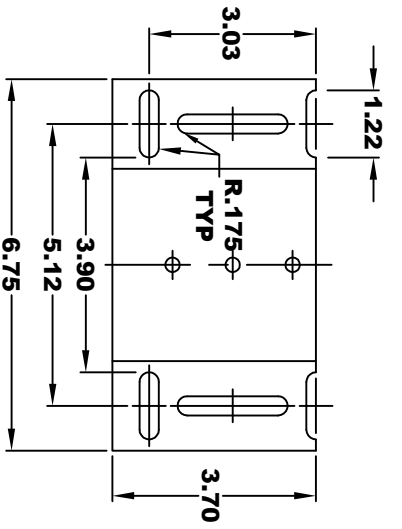


Ø 3/8 - 16 UNC THREAD
TAPPED THRU
.03 - .05 x 45° CHAMFER
4 PLACES, ON A Ø5.875 B. C.

SPEED SENSOR ELECTRICAL SPECIFICATION:
-4.5V TO 24V OPERATING VOLTAGE
-20°C TO 85°C OPERATING TEMPERATURE
-CURRENT SINKING UP TO 25mA
-AN EXTERNAL OUTPUT PULL UP RESISTOR IS REQUIRED
-SENSOR IS DESIGNED TO OPERATE WITH 4 N/S POLEPAIRS
-THE OPERATIONAL DISTANCE BETWEEN THE MAGNET
AND THE HOUSING, INCLUDING ANY RUNOUT
SHOULD NOT EXCEED .030 INCHES



MOTOR WIRING CONNECTIONS:
CW ROTATION DRIVE END
CONNECT A1 & F1 TO ONE BATTERY TERMINAL
CONNECT A2 & F2 TO OTHER BATTERY TERMINAL
CCW ROTATION DRIVE END
SWITCH F1 & F2 CONNECTIONS



MOTOR WEIGHT: 83 LBS
CLASS "H" INSULATION
PERFORMANCE SPEC: 12

THIS PRINT IS THE PROPERTY OF D&D MOTOR SYSTEMS INC.
DO NOT SCALE
WORK TO DIMENSIONS
TOLERANCES UNLESS OTHERWISE SPECIFIED ARE AS FOLLOWS
XX _____ .01
XXX _____ .005
.XX ROUGH CASTING _____ .03
HOLES _____ .001 / +.006
ANGLES _____ 0.30"

D & D MOTOR SYSTEMS INC

MOTOR OUTLINE

SIZE	DRAWN DATE	RELEASE DATE	DWG NO. / PART NO.	REV
B	11-11-08		ES-84B-12	
SCALE	STF	DRAWN BY	MJG	REV DATE