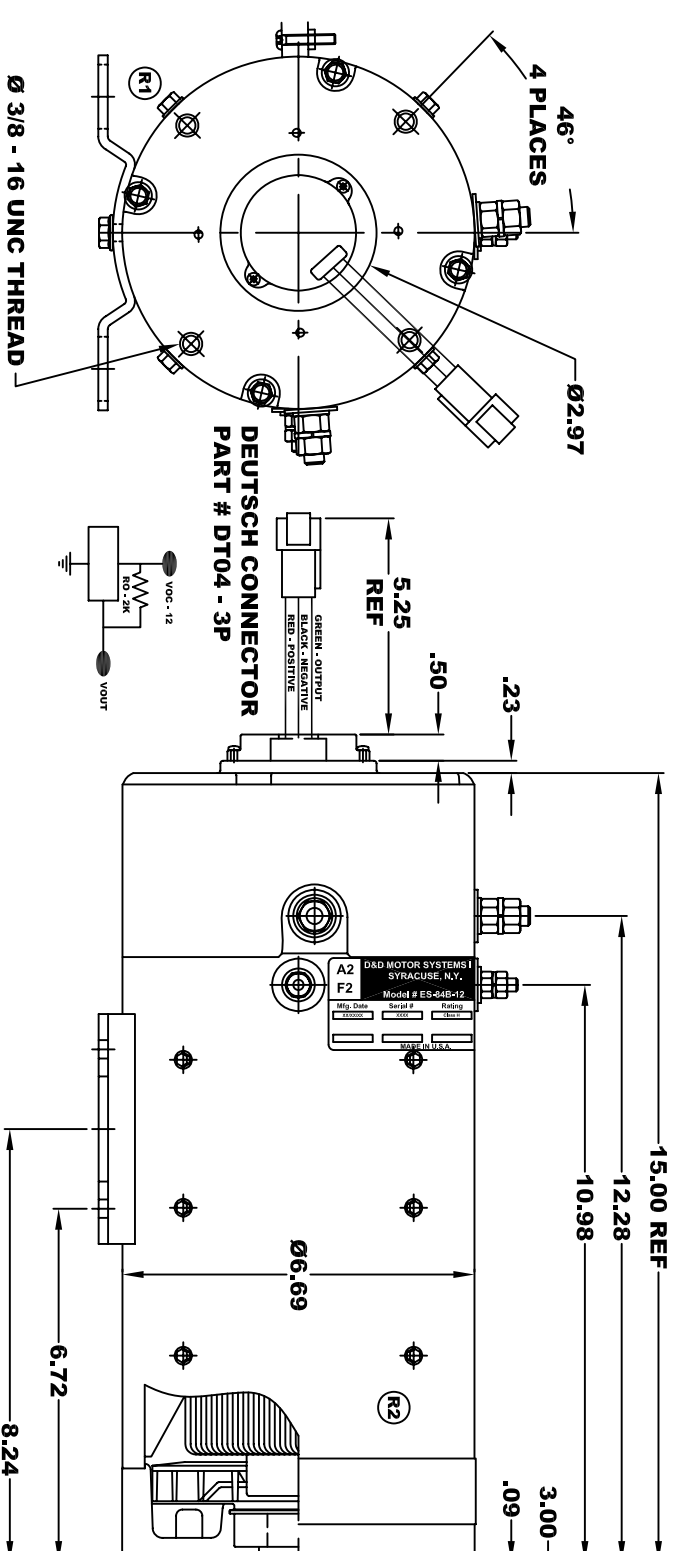


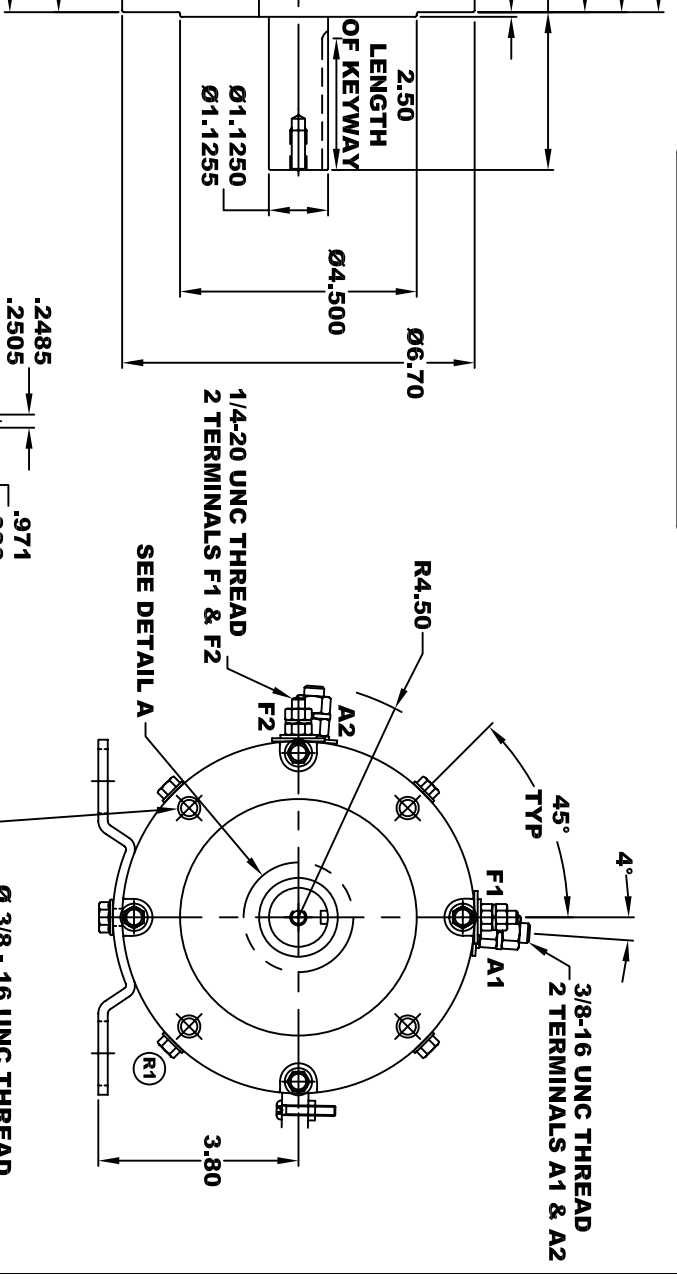
**TORQUE SPECIFICATION FOR  
POWER CABLE SECURING TOP NUTS**  
3/8-16 UNC ( A1 & A2 ) - 140 IN / LBS MAX  
1/4-20 UNC ( F1 & F2 ) - 50 IN / LBS MAX

<b>D&amp;D MOTOR SYSTEMS INC.</b>			
SYRACUSE N.Y.			
<b>A2</b>	<b>A1</b>	<b>F1</b>	<b>F2</b>
Mfg. Date	Serial #	Rating	Voltage
XXXXXX	XXXX	CLASS "H"	XX
MADE IN U.S.A.			

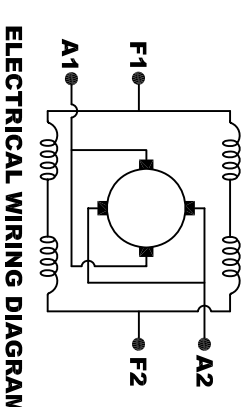


Ø 3/8 - 16 UNC THREAD  
TAPPED THRU  
.03 - .05 x 45° CHAMFER  
4 PLACES, ON A Ø5.875 B. C.

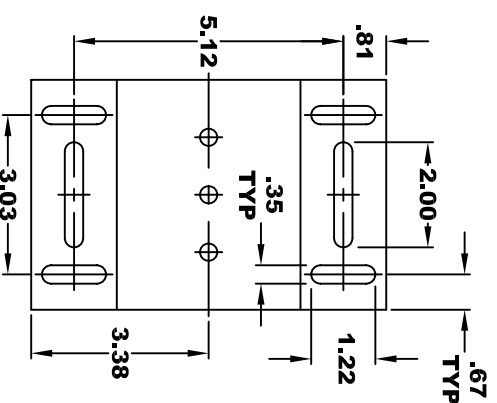
**SPEED SENSOR ELECTRICAL SPECIFICATION:**  
-4.5V TO 24V OPERATING VOLTAGE  
-20°C TO 85°C OPERATING TEMPERATURE  
-CURRENT SINKING UP TO 25mA  
-AN EXTERNAL OUTPUT PULL UP RESISTOR IS REQUIRED  
-SENSOR IS DESIGNED TO OPERATE WITH 4 N/S POLEPAIRS  
AND THE HOUSING, INCLUDING ANY RUNOUT  
SHOULD NOT EXCEED .030 INCHES



5/16 - 18 UNC THREAD  
▽ .75  
**DETAIL A**



**MOTOR WIRING CONNECTIONS:**  
CW ROTATION DRIVE END  
CONNECT A1 & F1 TO ONE BATTERY TERMINAL  
CONNECT A2 & F2 TO OTHER BATTERY TERMINAL  
CCW ROTATION DRIVE END  
SWITCH F1 & F2 CONNECTIONS



**MOTOR WEIGHT: 83 LBS**  
**CLASS "H" INSULATION**  
**PERFORMANCE SPEC: 12**

THIS PRINT IS THE PROPERTY OF D&D MOTOR SYSTEMS INC.  
DO NOT SCALE  
WORK TO DIMENSIONS  
TOLERANCES UNLESS OTHERWISE SPECIFIED ARE AS FOLLOWS  
.XX \_\_\_\_\_ .01  
.XXX \_\_\_\_\_ .005  
.XX ROUGH CASTING \_\_\_\_\_ .03  
HOLES \_\_\_\_\_ -.001 / +.006  
ANGLES \_\_\_\_\_ 0°30"

<b>D &amp; D MOTOR SYSTEMS INC</b>			
<b>MOTOR OUTLINE</b>			
SIZE	DRAWN DATE	RELEASE DATE	DWG NO. / PART NO.
B	11-11-08		ES-84B-12
SCALE	STF	DRAWN BY	MJG
		REV DATE	5-16-13
		REV	R2