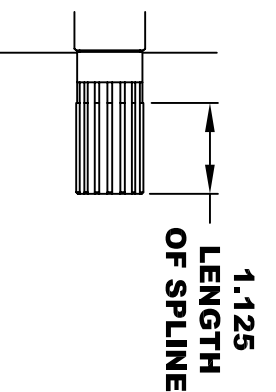
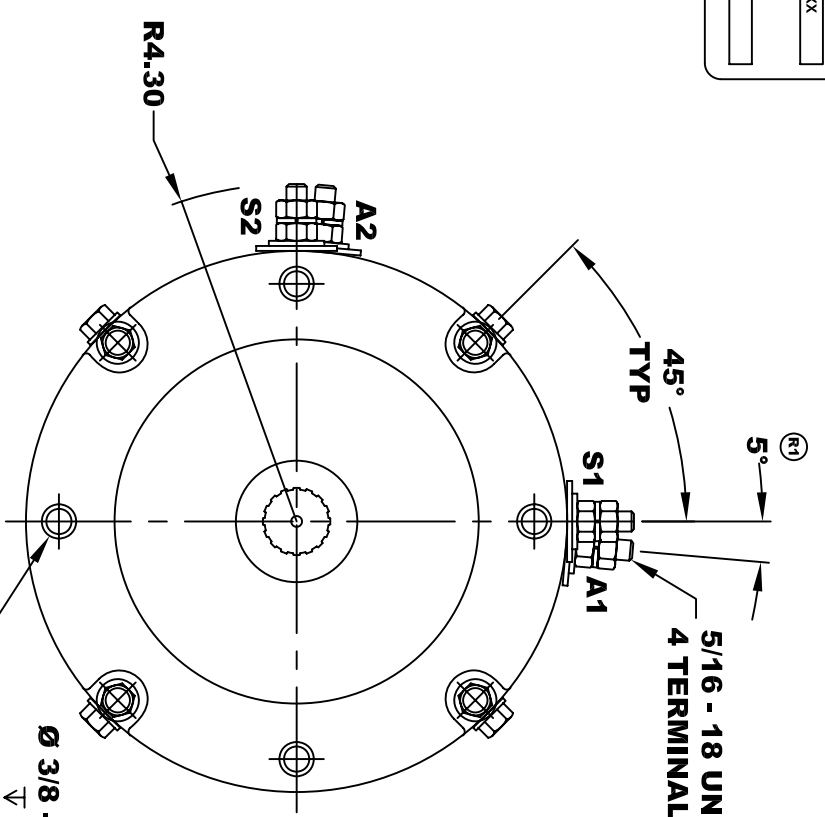
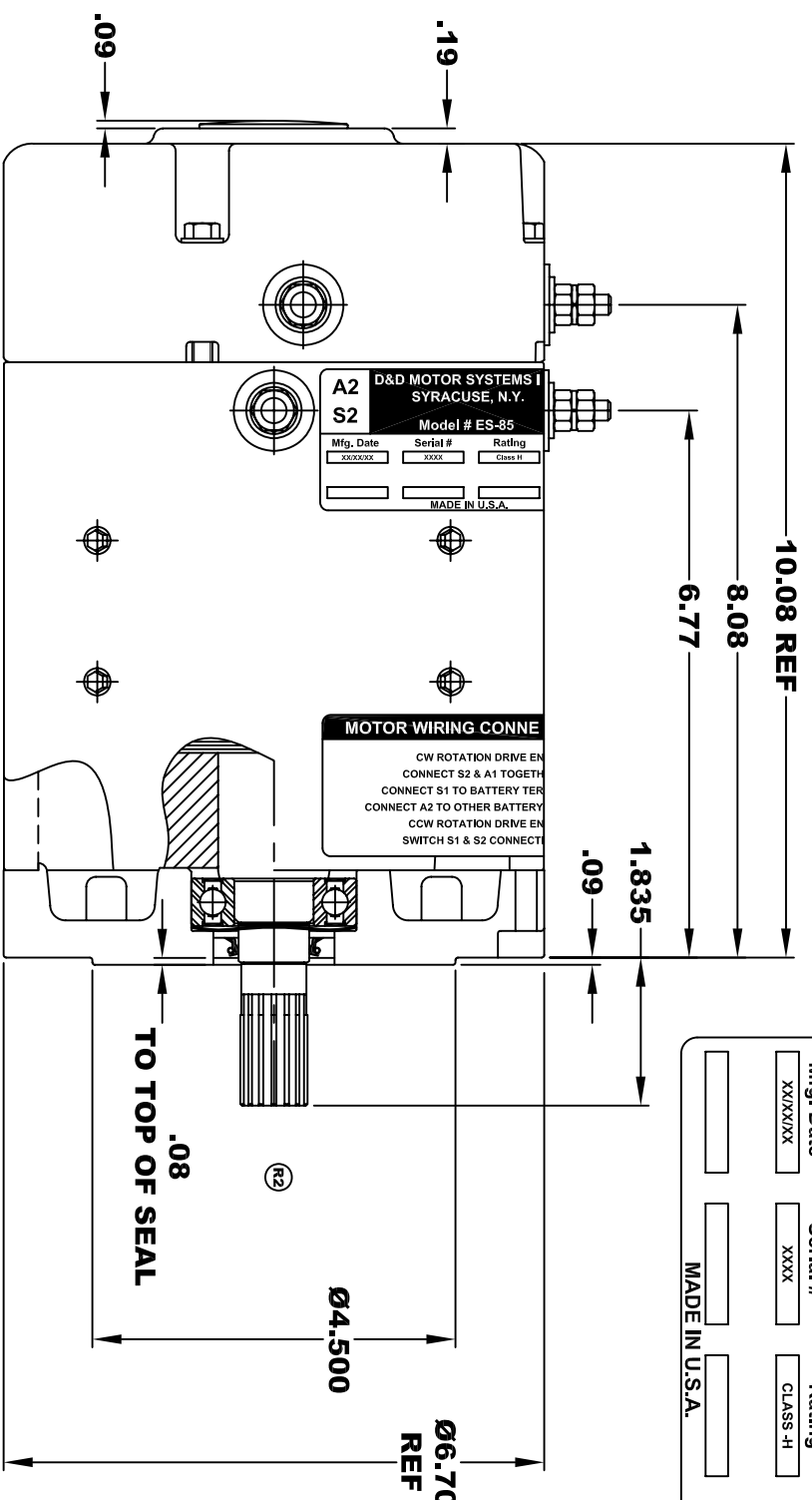
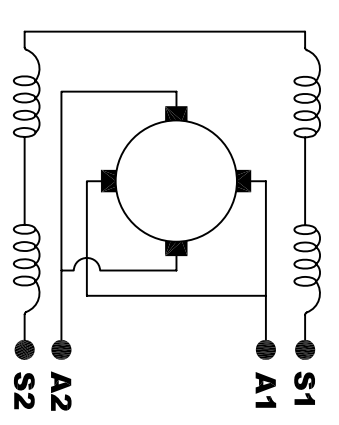


**TORQUE SPECIFICATION FOR
POWER CABLE SECURING TOP NUTS
5/16-18 UNC - 110 IN / LBS MAX**

D&D MOTOR SYSTEMS INC.			
SYRACUSE N.Y.			
Model # ES-85			
A2	S2	A1	S1
Mfg. Date	Serial #	Rating	Voltage
XXXXXX	XXXX	CLASS -H	XX
MADE IN U.S.A.			



ELECTRICAL WIRING DIAGRAM



MOTOR WIRING CONNECTIONS:
CW ROTATION DRIVE END
CONNECT S2 & A1 TOGETHER
CONNECT S1 TO BATTERY TERMINAL
CONNECT A2 TO OTHER BATTERY TERMINAL
CCW ROTATION DRIVE END
SWITCH S1 & S2 CONNECTIONS

EXTERNAL INVOLUTE SPLINE DATA	SIDE FIT
TYPE OF FIT	16
NUMBER OF TEETH	20 / 40
SPLINE PITCH	30°
PRESSURE ANGLE	.692 REF
BASE DIAMETER	.800 REF
PITCH DIAMETER	.850 - .800
MAJOR DIAMETER (h11)	.746
FORM DIAMETER	.686 -
MINOR DIAMETER (h14)	

MOTOR WEIGHT 49 LBS
CLASS "H" INSULATION
PERFORMANCE SPEC: 1

THIS PRINT IS THE PROPERTY OF D&D MOTOR SYSTEMS INC.
 DO NOT SCALE
 WORK TO DIMENSIONS
 TOLERANCES UNLESS OTHERWISE SPECIFIED ARE AS FOLLOWS
 .XX _____ .01
 .XXX _____ .005
 .XX ROUGH CASTING _____ .03
 HOLES _____ -.001 / +.006
 ANGLES _____ 0°30"

D & D MOTOR SYSTEMS INC			
MOTOR OUTLINE			
SIZE	DRAWN DATE	RELEASE DATE	DWG NO. / PART NO.
B	10-7-03		ES-85
SCALE	STF	DRAWN BY	REV DATE
		MJG	5-10-04