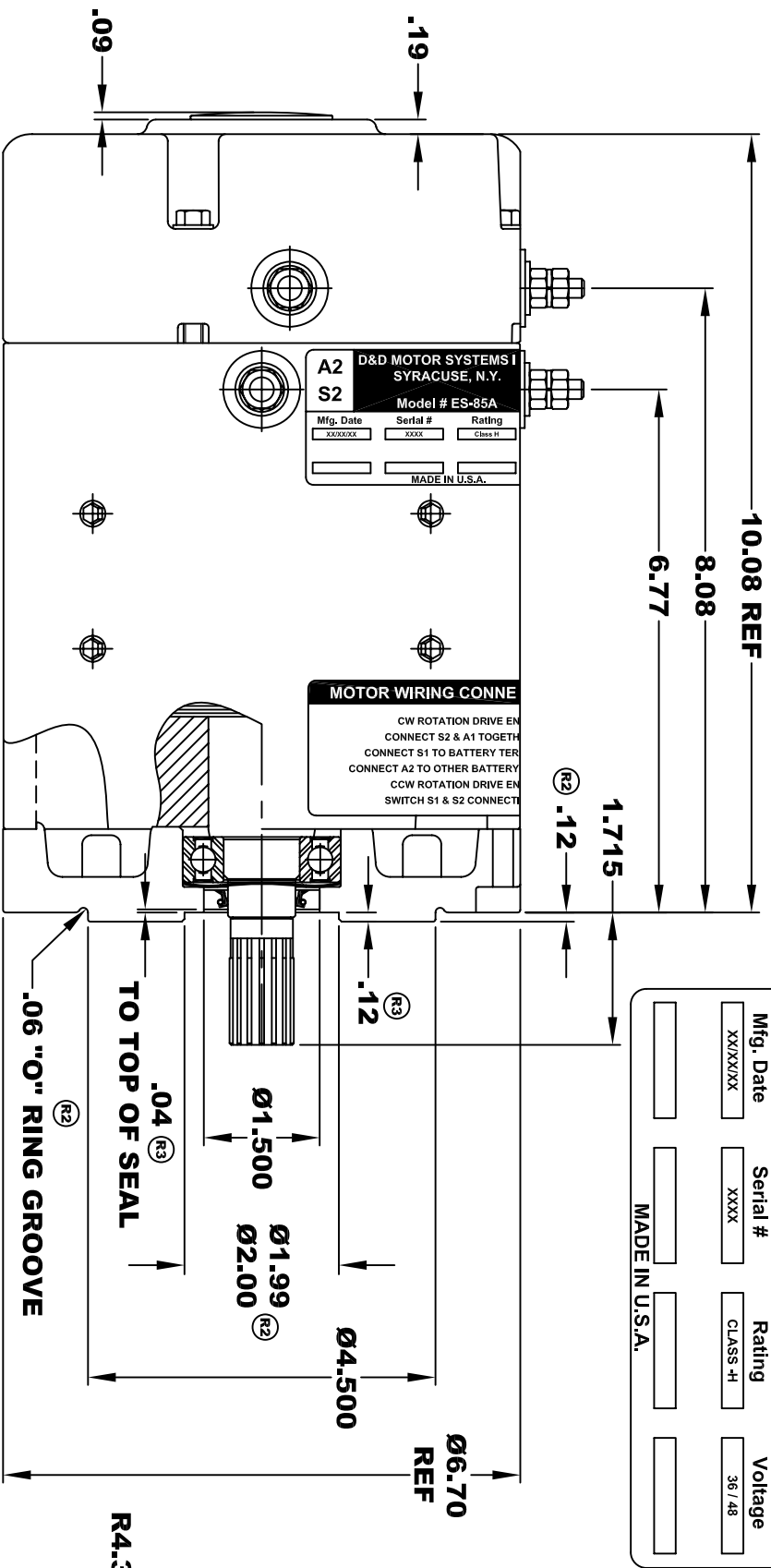
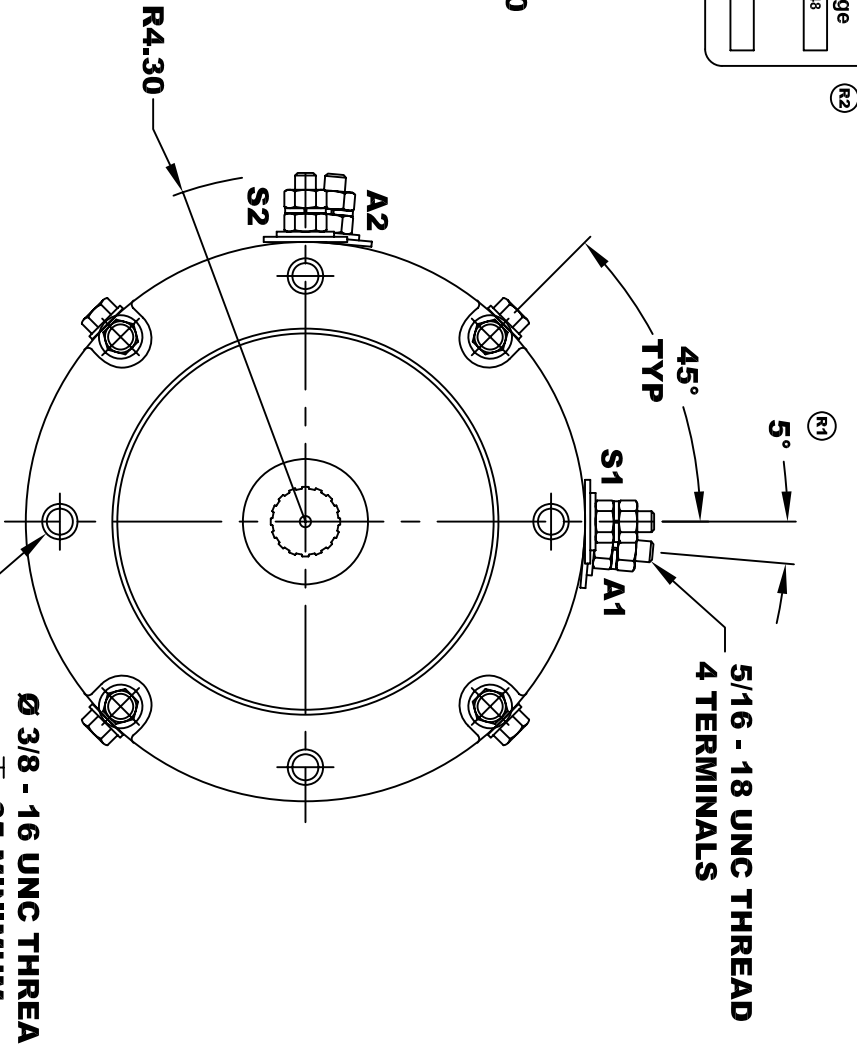


R2 REVISED VIEW



D&D MOTOR SYSTEMS INC.		A1	
SYRACUSE N.Y.		S1	
Model # ES-85A			
Mfg. Date	Serial #	Rating	Voltage
XXXX/XX	XXXX	CLASS -H	36 / 48
MADE IN U.S.A.			

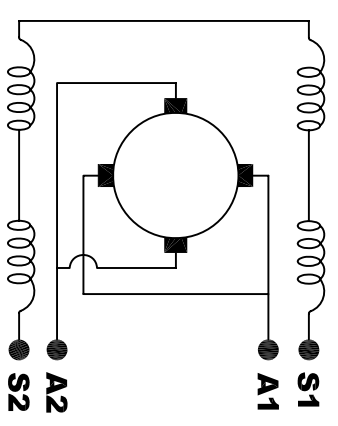
TORQUE SPECIFICATION FOR POWER CABLE SECURING TOP NUTS
5/16-18 UNC - 110 IN / LBS MAX



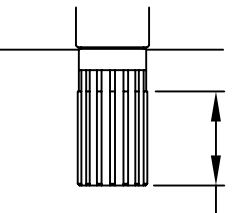
Ø 3/8 - 16 UNC THREAD
 .65 MINIMUM
 BREAK THRU PERMISSABLE
 .03-.05 x 45° CHAMFER
 4 PLACES, ON A Ø5.875 B. C.

MOTOR WIRING CONNECTIONS:
CW ROTATION DRIVE END
 CONNECT S2 & A1 TOGETHER
 CONNECT S1 TO BATTERY TERMINAL
 CONNECT A2 TO OTHER BATTERY TERMINAL
CCW ROTATION DRIVE END
 SWITCH S1 & S2 CONNECTIONS

ELECTRICAL WIRING DIAGRAM



1.125
 LENGTH
 OF SPLINE



EXTERNAL INVOLUTE SPLINE DATA	SIDE FIT
TYPE OF FIT	16
NUMBER OF TEETH	20 / 40
SPLINE PITCH	30°
PRESSURE ANGLE	.692 REF
BASE DIAMETER	.800 REF
PITCH DIAMETER	.850 - .800
MAJOR DIAMETER (h11)	.746
FORM DIAMETER	.686 -
MINOR DIAMETER (h14)	

MOTOR WEIGHT 49 LBS
CLASS "H" INSULATION
PERFORMANCE SPEC: 1

THIS PRINT IS THE PROPERTY OF D&D MOTOR SYSTEMS INC.
 DO NOT SCALE
 WORK TO DIMENSIONS
 TOLERANCES UNLESS OTHERWISE SPECIFIED ARE AS FOLLOWS
 .XX .01
 .XXX .005
 .XX ROUGH CASTING .03
 HOLES .001 / +.006
 ANGLES 0°30"

D & D MOTOR SYSTEMS INC

MOTOR OUTLINE

SIZE	DRAWN DATE	RELEASE DATE	DWG NO. / PART NO.	REV
B	10-7-03		ES-85A	R3
SCALE	STF	DRAWN BY	MJG	REV DATE
				1-7-05